

Year: 2018

Inventory Unit Number/Name: OR-015-101A/ Snyder Creek 1

FORM 1

**DOCUMENTATION OF BLM WILDERNESS INVENTORY
FINDINGS ON RECORD**

1. Is there existing BLM wilderness inventory information on all or part of this area?

No _____ Yes X (if more than one unit is within the area, list the names/numbers of those units):

a) **Inventory Source:** Wilderness Inventory – Final Intensive Inventory Decisions; USDI BLM - Oregon and Washington, November 1980.

b) **Inventory Unit Number(s)/ Name(s):** 1-101/ Abert Rim

c) **Map Name(s)/Number(s):** Intensive Wilderness Inventory - Final Decisions; USDI BLM - Oregon, November 1980.

d) **BLM District(s)/Field Office(s):** Lakeview District, Lakeview Resource Area.

2. BLM Inventory Findings on Record:

Existing inventory information regarding wilderness characteristics (if more than one BLM inventory unit is associated with the area, list each unit and answer each question individually for each inventory unit):

Unit #	Size (historic acres)	Natural Condition? Y/N	Outstanding Solitude? Y/N	Outstanding Primitive & Unconfined Recreation? Y/N	Supplemental Values? Y/N
1-101	22,880	Y	N	Y	Y
1-101A*	26	Y	N	Y	N

* The inventory of this unit was updated in 2012. However, due to a State Office-sponsored Wilderness Inventory Consistency Evaluation and subsequent guidance, the 2012 inventory analysis and findings are being replaced by this current 2018 inventory review. Documentation of the 2012 inventory can be found in the wilderness inventory project record.

Summarize any known primary reasons for prior inventory findings listed in this table:

The unit was bounded by Highway 395 to the west, a 500 KV powerline to the north, and BLM roads 6135-00 and 6145-00 to the south and east. The physical characteristics of the unit were described as a long narrow unit with Abert Rim being the major geologic feature

and sagebrush flats above (east of) the rim. The unit contained a relic stand of ponderosa pine (Colvin Timbers), as well as western juniper stands in the southeast corner.

The unit was considered natural except for the southeast corner where a drainage ditch leading to private lands was substantially noticeable. The area had an outstanding opportunity for primitive and unconfined recreation. The decision was made to designate most all of the Abert Rim as a WSA, with the exception of the southeast corner.

FORM 2

DOCUMENTATION OF CURRENT WILDERNESS INVENTORY CONDITIONS

Unit Number/Name: OR-015-101A/ Snyder Creek 1

(1) Is the unit of sufficient size? Yes No

Between 2008 and 2016, BLM staff conducted field inventory in the area as part of a process to update its road and wilderness inventories and to gather additional information to supplement ONDA's wilderness information. This fieldwork included photo documentation of the boundary and interior routes and a re-evaluation of wilderness characteristics for this area. Using both ONDA and BLM photos, field logs, and staff field knowledge, the BLM completed route analysis within the area in 2017.

The BLM determined that the inventory unit is bounded by BLM Road 6145-D0 on the south; BLM interim numbered road 6145-DF on the east; and is contiguous with Abert Rim WSA (1-101) to the northwest.

Thus, based on these boundary and road determinations, the BLM found the Snyder Creek 1 inventory unit does not meet the minimum size criteria at approximately 26 acres of BLM-administered lands. However, it does meet one of the exceptions to the size criteria; namely, that it is contiguous with BLM's 25,067-acre Abert Rim WSA located to the northwest.

Additional background on the process that the BLM followed during this evaluation is contained in the document, *Wilderness Inventory Maintenance Process for the Lakeview Resource Area, BLM* and in the *Route Analysis Forms*. Both documents can be found in the wilderness inventory file.

DESCRIPTION OF CURRENT CONDITIONS:

This unit is located approximately 6 miles east of Valley Falls, Oregon. The unit is approximately 0.5 miles long by 0.25 miles wide. The terrain is mostly flat and contains approximately 0.5 miles of Snyder Creek along the northwest boundary. Vegetatively, the unit is covered with sagebrush and western juniper.

(2) Is the unit in a natural condition? Yes No N/A

In 1980, the unit was described as not being in a natural condition and was excluded from the WSA boundary due to a small, man-made drainage ditch.

The unit currently contains the following man-made developments/disturbances: 0.5 miles of rehabbed ditch line.

Presently, almost 4 decades after the original inventory, this development is weathered and grown over with herbaceous grasses, sagebrush, and juniper. As a result, the development now fades into the background of the unit and is largely only noticeable at a close distance (1/4th mile or less) and is thus substantially unnoticeable from further distances. The vegetation of the area also plays a large role in screening disturbances and man-made developments. Furthermore, this disturbance is located near the perimeter of the unit and, as such, has a small area of influence.

Based on a review of all the available information including photos, staff knowledge, and field review, the BLM concluded, based on its own merits, the Snyder Creek 1 unit appears in natural condition where the imprint of man is substantially unnoticeable. Furthermore, since the unit is now contiguous with the Abert Rim WSA, the Snyder Creek 1 unit must be analyzed in the context of these now shared wilderness values. After considering wilderness values offered by both units, the BLM determined that the Snyder Creek 1 unit and the WSA contribute mutually additive effects to the natural condition of both units as a whole. Thus, the area was found to be in a natural condition primarily affected by the forces of nature.

(3) Does the unit (or the remainder of the unit if a portion has been excluded due to unnaturalness and the remainder is of sufficient size) **have outstanding opportunities for solitude?** Yes No N/A

In 1980, the unit was found to lack outstanding opportunities for solitude.

In 1991, the Abert Rim WSA, to the northwest, was found to have outstanding opportunities for solitude, especially in the southern half of the unit, due to topography of the rim and vegetative screening that isolate the visitor (Wilderness Study Report, 1991; p. 64).

The BLM determined that although the Snyder Creek 1 inventory unit possesses some degree of solitude, due to juniper trees along the eastern border. Although on its own merit, the unit lacks outstanding opportunities for solitude. However, since the unit is now contiguous with the Abert Rim WSA, the Snyder Creek 1 unit must be analyzed in the context of these now shared wilderness values. After considering wilderness values offered by both units, the BLM concluded that one would be able to avoid the sights and sounds of others within Snyder Creek 1 inventory unit due to the contiguous values of the 25,067-acre Abert Rim WSA.

(4) Does the unit (or the remainder of the unit if a portion has been excluded due to unnaturalness and the remainder is of sufficient size) **have outstanding opportunities for primitive and unconfined recreation?** Yes X No N/A

In 1980, the Abert Rim WSA was found to possess outstanding opportunities for primitive and unconfined recreation.

The BLM determined that the Snyder Creek 1 inventory unit possesses some degree primitive and unconfined recreation on its own merit. However, opportunities for primitive and unconfined recreation would be enhanced by the additive effect of outstanding opportunities present within the 25,067-acre Abert Rim WSA to the northwest and must be analyzed in the context of these now shared wilderness values.

Thus, for the reasons specified above and based on a review of all the available information including (BLM and citizen provided) photos, staff knowledge, and field review, the BLM concluded that outstanding opportunities for primitive and unconfined recreation are present within Snyder Creek 1 inventory unit due to the contiguous values of the Abert Rim WSA.

(5) Does the unit have supplemental values? Yes X No N/A

The BLM found the unit to possess archaeological and geological values as well as the presence of warner sucker, mule deer, pronghorn antelope, California bighorn sheep, and sage-grouse habitat.

In 1991, the Abert Rim WSA was found to have numerous supplemental values including: one of the largest continuous fault scraps in North America, archaeological district on the National Register of Historic Sites and Places, the northernmost group of isolated ponderosa pines in the Warner Mountains, California bighorn sheep, nesting area for various raptors, deer winter range, and for educational and scientific purposes by geology and archaeology students.

Summary of Findings and Conclusion

Unit Number and Name: OR-015-101A/ Snyder Creek 1

Summary Results of Analysis:

- 1. Does the area meet the size requirements? Yes ___ No
- 2. Does the area appear to be natural? Yes ___ No
- 3. Does the area offer outstanding opportunities for solitude or a primitive and unconfined type of recreation? Yes ___ No ___ NA
- 4. Does the area have supplemental values? Yes ___ No ___ NA

Conclusion (Check One):

- The area- or a portion of the area- has wilderness character: *(items 1, 2 and 3 must be checked "yes")*.
- The area does not have wilderness character: *(any of items 1, 2 and 3 are checked "no")*.

Prepared by (Member Names and Titles):

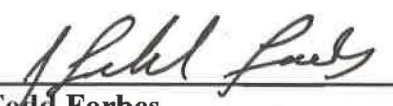

Chris Bishop: Outdoor Recreation Planner

6/4/18
Date


Jami Ludwig: Assistant Field Manager

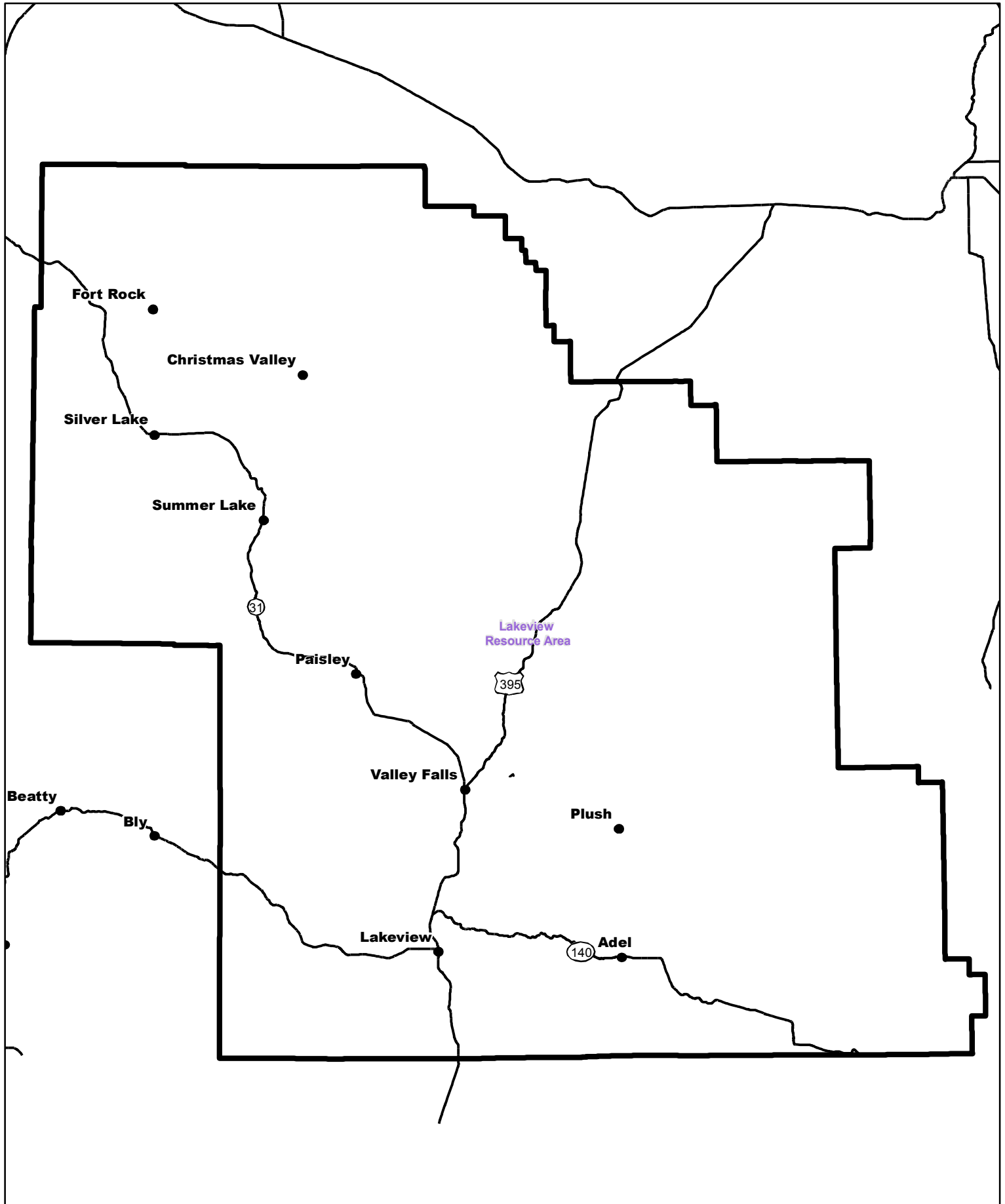
6/4/18
Date

Approved by:

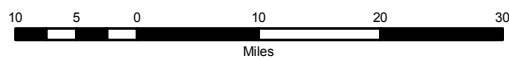

J. Todd Forbes
Field Manager

6/4/18
Date

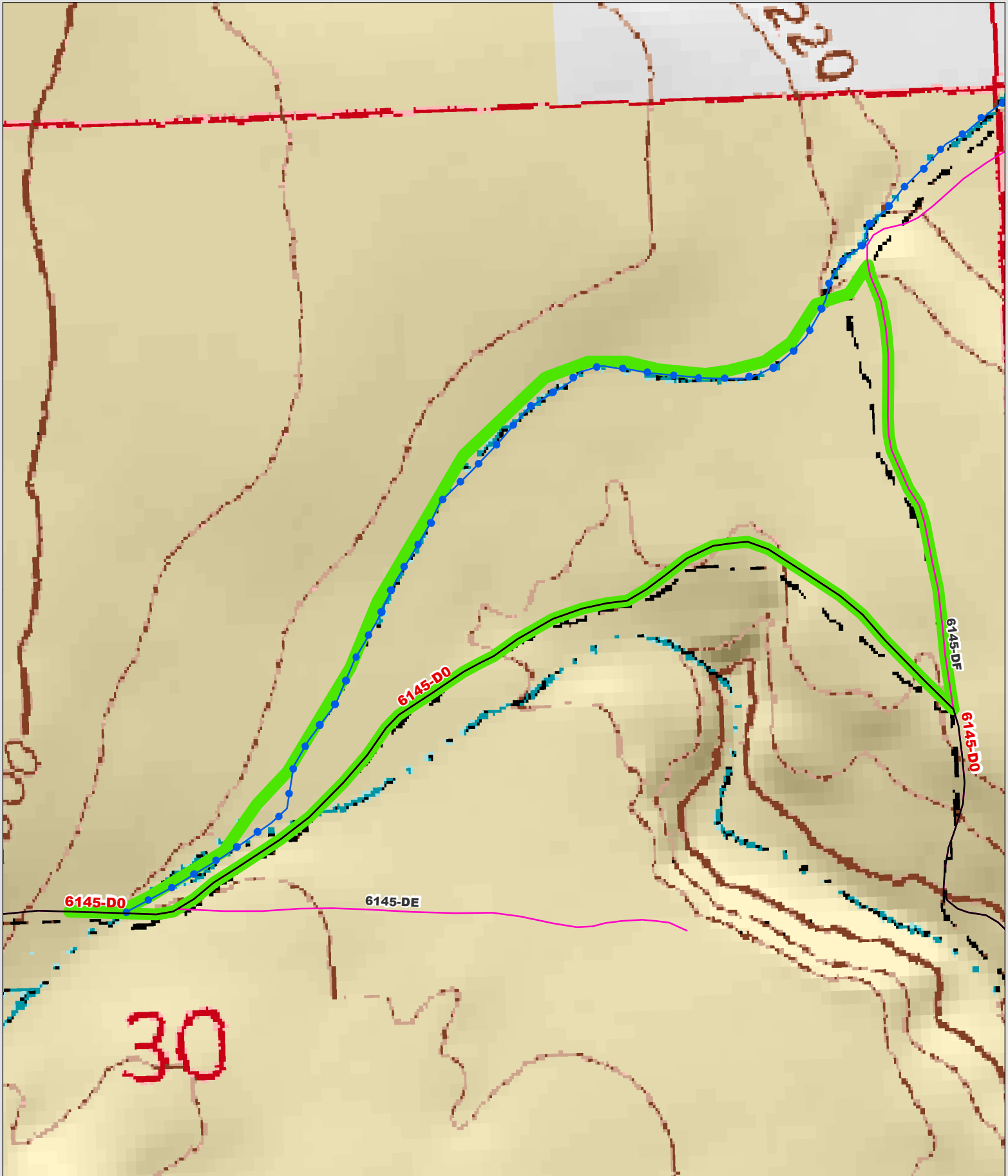
This form documents information that constitutes an inventory finding on wilderness characteristics. It does not represent a formal land use allocation or a final agency decision subject to administrative remedies under 43 CFR parts either 4 or 1610.5-2.



Wilderness Character Inventory Unit



No warranty is made by the Bureau of Land Management as to the accuracy, reliability, or completeness of these data for individual or aggregate use with other data. Original data were compiled from various sources. This information may not meet National Map Accuracy Standards. This product was developed through digital means and may be updated without notification.



Wilderness Character Inventory Unit

Ownership

- Bureau of Land Management
- U.S. Forest Service
- State
- Private/Unknown

Roads/Trails

- Motorized Routes
- Highways
- Reclaiming Routes
- Interim Routes

Pipelines and Ditches

- Ditch
- Water Pipeline
- Guzzler
- Fences

Water Developments

- Dam
- Reservoir
- Spring Development
- Trough
- Water Diversion

- Water Tank
- Waterhole
- Well - Water

0.08 0.04 0 0.08 Miles

No warranty is made by the Bureau of Land Management as to the accuracy, reliability, or completeness of these data for individual or aggregate use with other data. Original data were compiled from various sources. This information may not meet National Map Accuracy Standards. This product was developed through digital means and may be updated without notification.