

Year: 2018

Inventory Unit Number/Name: OR-015-145A/ Sagehen Flat East

FORM 1

DOCUMENTATION OF BLM WILDERNESS INVENTORY FINDINGS ON RECORD

1. Is there existing BLM wilderness inventory information on all or part of this area?

No _____ Yes X (if more than one unit is within the area, list the names/numbers of those units):

a) **Inventory Source:** Wilderness Inventory – Final Intensive Inventory Decisions; USDI BLM - Oregon and Washington, November 1980.

b) **Inventory Unit Number(s)/Name(s):** 1-145A/Sagehen Flat

c) **Map Name(s)/Number(s):** Intensive Wilderness Inventory - Final Decisions; USDI BLM - Oregon, November 1980.

d) **BLM District(s)/Field Office(s):** Lakeview District, Lakeview Resource Area.

2. BLM Inventory Findings on Record:

Existing inventory information regarding wilderness characteristics (if more than one BLM inventory unit is associated with the area, list each unit and answer each question individually for each inventory unit):

Unit #	Size (historic acres)	Natural Condition? Y/N	Outstanding Solitude? Y/N	Outstanding Primitive & Unconfined Recreation? Y/N	Supplemental Values? Y/N
1-145A	7,620	Y	N	N	NA
1-145A*	7,605	Y	N	N	NA

*The inventory of this unit was updated in 2009. However, due to a State Office-sponsored Wilderness Inventory Consistency Evaluation and subsequent guidance, the 2009 inventory analysis and findings are being replaced by this current 2018 inventory review. Documentation of the 2009 inventory can be found in the wilderness inventory project record.

Summarize any known primary reasons for prior inventory findings listed in this table:

In 1980, Unit 1-145 was split into 2 units: Unit 1-145A (7,620 ac.) and 1-145B (8,095 ac.). The entire unit was described as a low sagebrush flat. The unit contained two shallow ephemeral lakebeds. There were two large lakebed pits in the unit at Dixon Reservoir and one adjacent to Road 6176 in Section 25 on the northeast. Dixon Reservoir was located on the road between the subunits. Because of the extremely flat nature of the unit, the large mound at the north end of the reservoir was visible for a considerable distance within both subunits. A large reservoir in Section 25 in the northeast corner of 145A was also very noticeable over a large area. Most of the unit, particularly the northern part, remained in a natural condition. Therefore, the unit was deemed to primarily be affected by the forces of nature, with the imprint of man substantially unnoticeable. The extremely flat terrain within the unit and the very low sage cover made it difficult to avoid the sights and sounds of others. The size of the unit was also insufficient, considering the flat terrain, to provide opportunities to escape the presence of others. The unit did not offer an outstanding opportunity for solitude. The extremely flat and exposed areas of the unit did not offer any outstanding potential for hiking, hunting or other primitive forms of recreation. No supplemental values were identified.

FORM 2

**DOCUMENTATION OF CURRENT WILDERNESS INVENTORY
CONDITIONS**

Unit Number/Name: OR-015-145A/ Sagehen Flat East

(1) Is the unit of sufficient size? Yes No

In 2005, the BLM received a citizen proposal from the Oregon Natural Desert Association (ONDA) for the 38,953-acre Spaulding proposed Wilderness Study Area (WSA) Addition 1. ONDA included in their information a narrative report, maps, photos, photo and route logs, and GIS data with their route and photo point data; all of these materials were considered during the BLM's wilderness inventory process for this BLM Unit. The photos submitted by ONDA were taken in August of 2004. They identified the area as having no interior routes which met the BLM wilderness inventory definition of a road (p. 209-223 of ONDA 2005).

Between 2007 and 2016, BLM staff conducted field inventory in the area as part of a process to update its road and wilderness inventories and to gather additional information to supplement ONDA's wilderness information. This fieldwork included photo documentation of the boundary and interior routes and a re-evaluation of wilderness characteristics for this area. Using both ONDA and BLM photos, field logs, and staff field knowledge, the BLM completed route analysis within the area in 2017.

The BLM determined that several of the routes ONDA identified as “ways” are boundary roads. The BLM found the Spaulding proposed WSA Addition 1 is not one large roadless unit, but is comprised of several smaller inventory units; which must be evaluated individually.

The BLM determined that the inventory unit is bounded by BLM Roads 6176-00 to the east; 6116-BA to the south; 6116-B0 to the west; 6116-00 and 6176-E0 to the north.

Thus, based on these boundary and road determinations, the BLM found the Sagehen Flat East inventory unit to exceed the minimum size criteria at approximately 7,605 acres of BLM-administered lands.

Additional background on the process the BLM followed during this evaluation is contained in the document, *Wilderness Inventory Maintenance Process for the Lakeview Resource Area, BLM* and in the *Route Analysis Forms*. Both documents can be found in the wilderness inventory file.

DESCRIPTION OF CURRENT CONDITIONS:

This unit is located approximately 32 miles southeast of Adel, Oregon. It is approximately 4 miles long by 4 miles wide. Topographically, the majority of the unit is a flat with gently hills (generally 50-150 ft. high) and contains 1 lakebed depression (30 ft. deep) at Dutch Reservoir. The unit also contains 2 shallow drainages running the width of the unit (5 -10 ft. deep). Overall, the unit ranges in elevation from 5,840 to 6,135 feet. Vegetatively, the unit is composed of sagebrush and grasses.

(2) Is the unit in a natural condition? Yes No N/A

In 1980, historic Unit 1-145A/B contained two large lakebed pits in the unit at Dixon Reservoir and one adjacent to Road 6176 in Section 25 on the northeast. Dixon Reservoir was located on the road between the subunits. Because of the extremely flat nature of the unit, the large mound at the north end of the reservoir was visible for a considerable distance within both subunits. A large reservoir in Section 25 in the northeast corner of 145A was also very noticeable over a large area. Most of the unit, particularly the northern part, remained in a natural condition. Therefore, the unit was deemed to primarily be affected by the forces of nature, with the imprint of man substantially unnoticeable.

ONDA’s 2005 inventory concluded that because Spaulding proposed Wilderness Study Area (WSA) Addition 1 is now part of a larger contiguous unit totaling 190,380 acres (including Spaulding proposed WSA Addition 2, the Spaulding WSA), man-made features no longer have a cumulative impact on the area. Therefore, the proposed WSA was noted to be primarily affected by the forces of nature (p.212 of ONDA 2005). However, the BLM found that ONDA’s proposal did not represent one

large roadless unit, but is comprised of several smaller inventory units, which must be evaluated individually.

The unit currently contains the following man-made developments/disturbances: 21 acres of chemical treatments, 5 miles of motorized routes, and 4 waterholes.

Presently, almost 4 decades after the original inventory, these developments are weathered and grown over with herbaceous grasses and sagebrush. As a result, developments now fade into the background of the unit and are largely only noticeable at a close distance (1/4th mile or less) and are thus substantially unnoticeable from further distances. Furthermore, many of the disturbances are located near the perimeter of the unit and, as such, have a small area of influence.

Based on a review of all the available information including photos, staff knowledge, and field review, the BLM concluded that the unit appears in a natural condition where the imprints of man are substantially unnoticeable.

(3) Does the unit (or the remainder of the unit if a portion has been excluded due to unnaturalness and the remainder is of sufficient size) **have outstanding opportunities for solitude?** Yes _____ No X N/A _____

In 1980, historic Unit 1-145A/B was found to possess extremely flat terrain and the very low sage cover which made it difficult to avoid the sights and sounds of others. The size of the unit was also insufficient, considering the flat terrain, to provide opportunities to escape the presence of others. The unit did not offer an outstanding opportunity for solitude.

In 2005, ONDA's inventory identified the larger 190,380 acres proposed WSA Addition (including Spaulding proposed WSA Addition 1 & 2) as possessing outstanding opportunities for solitude because the units are now contiguous with each other and the Spaulding WSA. The diverse topography of the combined area would easily allow visitors to avoid the sights and sounds of others (p. 213 of ONDA 2005). However, the BLM found that ONDA's proposal did not represent one large roadless unit, but is comprised of several smaller inventory units, which must be evaluated individually.

The BLM acknowledges that there are limited opportunities for solitude within the Sagehen Flat East inventory unit. Topographically, the majority of the unit is a flat with gently hills (generally 50-150 ft. high) and contains 1 lakebed depression (30 ft. deep) at Dutch Reservoir. The unit also contains 2 shallow drainages running the width of the unit (5 -10 ft. deep). Overall, the unit ranges in elevation from 5,840 to 6,135 feet. Vegetatively, the unit is composed of sagebrush and grasses. These opportunities are less than outstanding as the area's characteristic landscape lacks vegetative screening and existing topographic screening is insufficient to effectively allow those recreating in the area to avoid the sights and sounds of others.

Thus, for the reasons specified above and based on a review of all the available information including (BLM and citizen provided) photos, staff knowledge, and field review, the BLM concluded the Sagehen Flat East inventory unit does not possess outstanding opportunities for solitude.

(4) Does the unit (or the remainder of the unit if a portion has been excluded due to unnaturalness and the remainder is of sufficient size) **have outstanding opportunities for primitive and unconfined recreation?** Yes _____ No X N/A _____

In 1980, historic Unit 1-45A/B was found to lack any outstanding potential for hiking, hunting or other primitive forms of recreation due to extremely flat and exposed terrain of the area.

In 2005, ONDA's inventory identified the larger 190,380 acres proposed WSA Addition (including Spaulding proposed WSA Addition 1 & 2) as possessing outstanding opportunities for primitive and unconfined recreation because the units are now contiguous with each other and the Spaulding WSA. As such, outstanding opportunities would further enhance wilderness characteristics found in the Spaulding WSA. ONDA specifically noted hiking, horseback riding, photography, sightseeing, wildlife viewing, hunting, and camping (p. 213 of ONDA 2005). However, the BLM found that ONDA's proposal did not represent one large roadless unit, but is comprised of several smaller inventory units, which must be evaluated individually.

The BLM finds the unit offers limited opportunities for hiking, horseback riding, backpacking, camping, wildlife observation, exploration, scenery, photography, stargazing, trapping, and hunting. However, the BLM determined that the unit does not possess outstanding opportunities for primitive and unconfined recreation through either the diversity of recreational activities possible in the area or by the outstanding quality of one opportunity relative to opportunities found within the Lakeview Resource Area.

(5) Does the unit have supplemental values? Yes _____ No _____ N/A X

Supplemental values were not evaluated as the unit was determined to lack both outstanding opportunities for solitude and or primitive and unconfined recreation, and therefore does not meet the minimum wilderness criteria.

Summary of Findings and Conclusion

Unit Number/Name: OR-015-145A/ Sagehen Flat East

Summary Results of Analysis:

- 1. Does the area meet the size requirements? X Yes No
- 2. Does the area appear to be natural? X Yes No
- 3. Does the area offer outstanding opportunities for solitude or a primitive and unconfined type of recreation? Yes X No NA
- 4. Does the area have supplemental values? Yes No X NA

Conclusion (Check One):

 The area- or a portion of the area- has wilderness character:
(items 1, 2 and 3 must be checked "yes").

 X The area does not have wilderness character: *(any of items 1, 2 and 3 are checked "no")*.

Prepared by (Member Names and Titles):


Chris Bishop: Outdoor Recreation Planner

10/18/2018
Date


Jami Ludwig: Assistant Field Manager

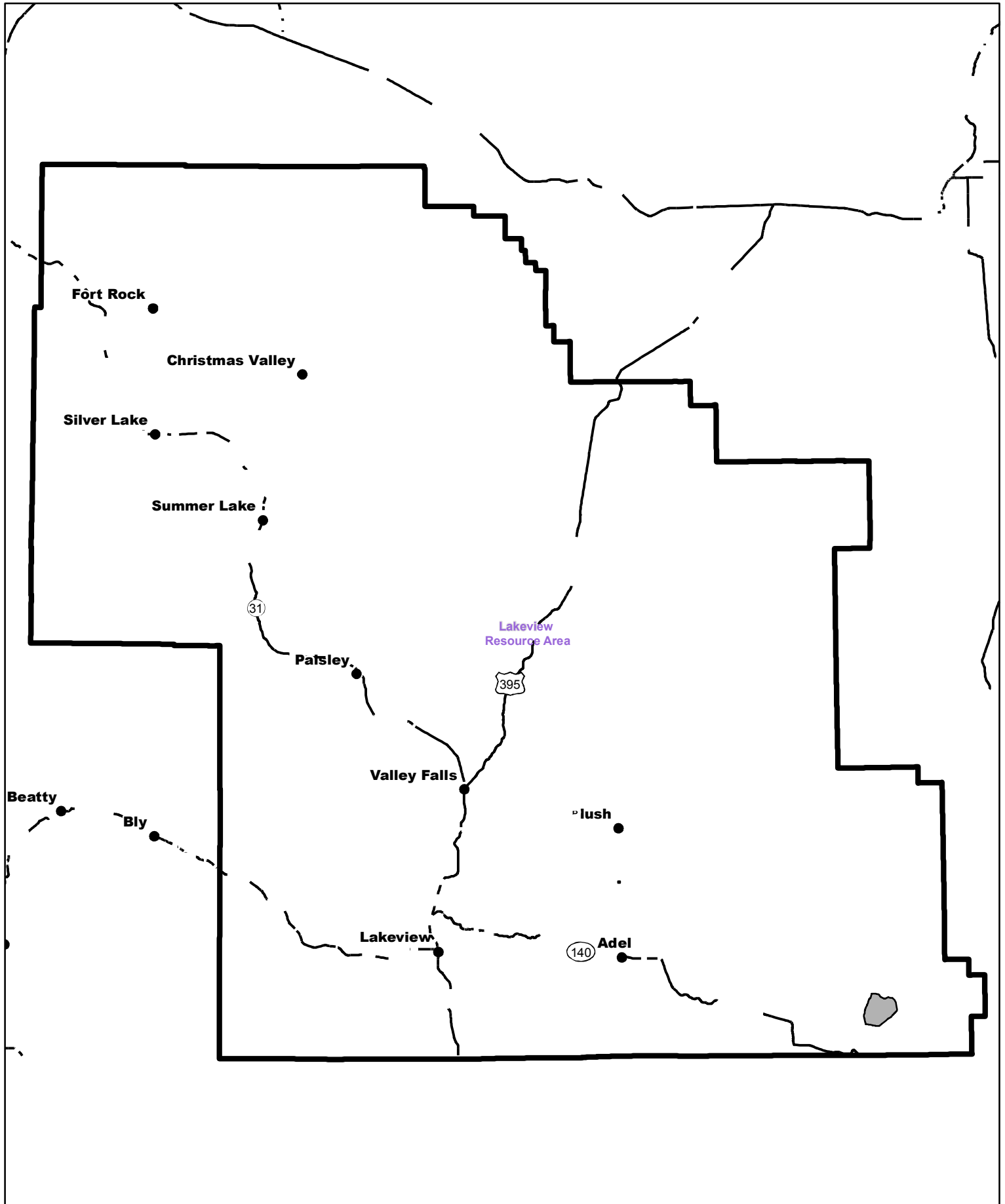
10/18/18
Date


Approved by:

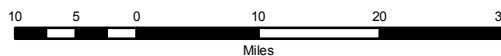

J. Todd Forbes
Field Manager


10/18/18
Date

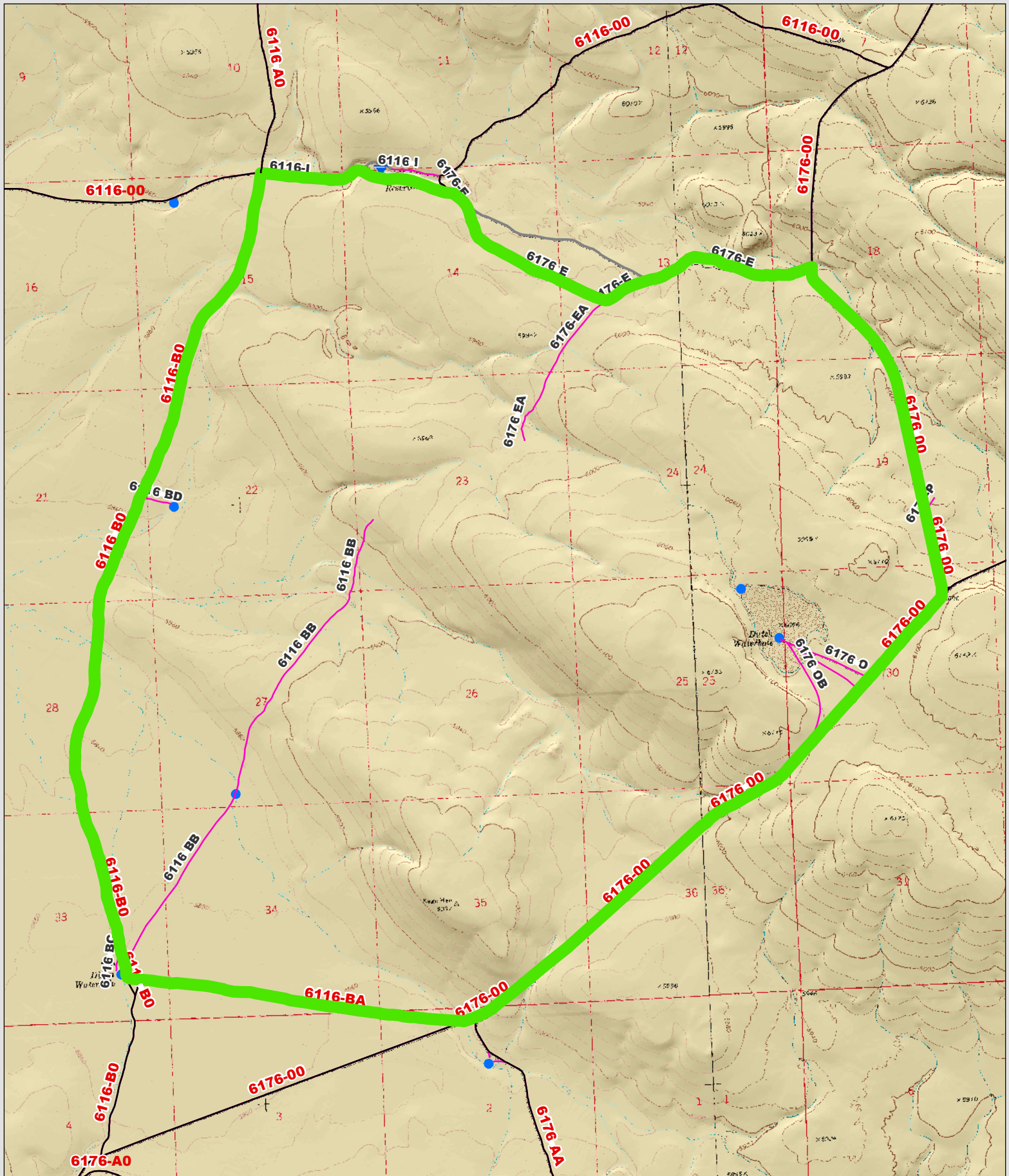
This form documents information that constitutes an inventory finding on wilderness characteristics. It does not represent a formal land use allocation or a final agency decision subject to administrative remedies under 43 CFR parts either 4 or 1610.5-2.



 Wilderness Character Inventory Unit



 No warranty is made by the Bureau of Land Management as to the accuracy, reliability, or completeness of these data for individual or aggregate use with other data. Original data were compiled from various sources. This information may not meet National Map Accuracy Standards. This product was developed through digital means and may be updated without notification.



<p>Wilderness Character Inventory Unit</p> <p>Ownership</p> <ul style="list-style-type: none"> Bureau of Land Management U.S. Forest Service Private/Unknown 	<p>Roads/Trails</p> <ul style="list-style-type: none"> Motorized Routes Highways Reclaiming Routes Interim Routes 	<p>Pipelines and Ditches</p> <ul style="list-style-type: none"> Ditch Water Pipeline Guzzler Fences 	<p>Water Developments</p> <ul style="list-style-type: none"> Dam Reservoir Spring Development Trough Water Diversion 	<ul style="list-style-type: none"> Water Tank Waterhole Well - Water
--	---	---	---	--

0.75 0.375 0 0.75 Miles

No warranty is made by the Bureau of Land Management as to the accuracy, reliability, or completeness of these data for individual or aggregate use with other data. Original data were compiled from various sources. This information may not meet National Map Accuracy Standards. This product was developed through digital means and may be updated without notification.