

Year: 2017

Inventory Unit Number/Name: OR-015-037/ Rehart Canyon

FORM 1

**DOCUMENTATION OF BLM WILDERNESS INVENTORY
FINDINGS ON RECORD**

1. Is there existing BLM wilderness inventory information on all or part of this area?

No _____ Yes X (if more than one unit is within the area, list the names/numbers of those units):

a) **Inventory Source:** BLM Wilderness Inventory files for Pacific Power and Light Company (PP&L) Transmission Line: PP&L Roadless Area Inventory Files (1978).

b) **Inventory Number(s)/ Unit Name(s):** 1-37 and PP&L OR-010-10-4/ Rehart Canyon

c) **Map Name(s)/Number(s):** Final Decision - Initial Wilderness Inventory: Public Lands and Islands Which Do Not Have Wilderness Characteristics and Units To Be Intensively Inventoried; USDI BLM - Oregon, August 1979.

d) **BLM District(s)/Field Office(s):** Lakeview District, Lakeview Resource Area.

2. BLM Inventory Findings on Record:

Existing inventory information regarding wilderness characteristics (if more than one BLM inventory unit is associated with the area, list each unit and answer each question individually for each inventory unit):

Unit#	Size (historic acres)	Natural Condition? Y/N	Outstanding Solitude? Y/N	Outstanding Primitive & Unconfined Recreation? Y/N	Supplemental Values? Y/N
1-37	26,900	N	Y	N	N
1-37*	31,398	Y	N	N/A	N/A

* The inventory of this unit was updated in 2013. However, due to a State Office-sponsored Wilderness Inventory Consistency Evaluation and subsequent guidance, the 2013 inventory analysis and findings are being replaced by this current 2018 inventory review. Documentation of the 2013 inventory can be found in the wilderness inventory project record.

Summarize any known primary reasons for prior inventory findings listed in this table: *PP&L evaluations were conducted in 1977/1978, before state and national BLM guidance, forms, definitions, and protocols for wilderness characteristics were established. As a result,*

analysis from these early assessments are inconsistent. Descriptions pulled from project records on these units are generally incomplete and conclusions are vague.

In 1978, the unit was described as having a high rim near the west boundary, broken by two deep canyons and several smaller ones. Most of the eastern three quarters of the unit consisted of plateau land dissected by shallow draws. Vegetation in the unit was comprised of mostly sagebrush and rabbit brush above the rim and greasewood below. The unit was found to meet the size requirement, but was found to be in an unnatural condition. The previous inventory listed a large number of man-made intrusions including several “ways”, waterholes, fences, gravel pit, and a corral. Opportunities for outstanding solitude were found, however, no supporting rationale was provided. Primitive recreation opportunities were limited to low-quality upland bird and big game hunting, hiking, and horseback riding. No supplemental values were noted within the unit.

FORM 2

DOCUMENTATION OF CURRENT WILDERNESS INVENTORY CONDITIONS

Unit Number/Name: OR-015-037/ Rehart Canyon

(1) Is the unit of sufficient size? Yes No

In 2008 and 2016, the BLM conducted a field inventory of the area to update its road and wilderness inventory and to gather additional information. This fieldwork included photo documentation of the boundary and interior routes and a re-evaluation of wilderness characteristics for this area. Using both citizen provided and BLM photos, field logs, and staff field knowledge, the BLM completed route analysis and made boundary determinations within the area in 2017.

The BLM determined that the inventory unit is bounded by BLM Road 6130 (Little Juniper) on the east; BLM Road 6185-00 (Big Juniper) on the south; BLM Road 6150-00 (Lower Venator Creek), U.S. Highway 395 right-of-way, and private land on the west; BLM Road 6110 (Dry Valley), with private and state lands on the north. The boundary of this unit was changed to remove approximately 96 acres of unnatural features and right-of-ways on the western boundary (pipeline, mineral pit, power line). In addition, 4,663 acres along the northern boundary were added to the unit as BLM route 6130-C0 was found no longer meet the wilderness definition of a road.

Thus, based on these boundary and road determinations, the BLM found the Rehart Canyon inventory unit to exceed the minimum size criteria at approximately 36,084 acres of BLM-administered lands.

Additional background on the process that the BLM followed during this evaluation is contained in the document, *Wilderness Inventory Maintenance Process for the Lakeview Resource Area, BLM* and in the *Route Analysis Forms*. Both documents can be found in the wilderness inventory file.

DESCRIPTION OF CURRENT CONDITIONS:

The Rehart Canyon inventory unit is located eight miles south of Wagontire, Oregon. The unit is approximately 15 miles long by 4 miles wide and contains one private 40-acre parcel at Cox Grove Lake. The unit is dominated by the Upper Abert Rim formation and three prominent deep canyons and the foothills of Little Juniper Mountain. The eastern portion of the unit is comprised of a large plateau with many shallow canyons, draws, and rolling terrain. The southern half of the unit burned in 1983 and 1984. The area was allowed to revegetate naturally and is now covered with grasses, rabbit brush, and sagebrush on the plateau, with greasewood common on the western lowlands below the rim.

(2) Is the unit in a natural condition? Yes X No N/A

In 1978, the unit was found to be in an unnatural condition. Man-made intrusions included several “ways”, waterholes, fences, a gravel pit, and a corral.

The unit currently contains the following man-made developments/disturbances: 11,547 acres of wildfire, 316 acres of seedings, 109 acres of chemical treatments, 51 miles of motorized routes, 11 miles of reclaiming routes, 2 miles of cat line, 14 miles of fence line, less than a half mile of ditches, 26 waterholes, 7 reservoirs, 5 guzzlers, 1 developed springs, and 1 wilderness therapy group campsite.

Presently, almost 4 decades after the original inventory, these developments are weathered and grown over with herbaceous grasses and sagebrush. As a result, developments now fade into the background of the unit and are largely only noticeable at a close distance (1/4th mile or less) and are thus substantially unnoticeable from further distances. The topography of the area also plays a large role in screening disturbances and man-made developments along the western rim and foothills/canyons in the northern third of the unit. The vegetation in the northeast corner of the unit also contributes to screening unnatural features. Areas that possessed obvious visual impacts and/or high concentrations of disturbances have been removed from the unit (mineral pit and pipeline). Areas that were allowed to revegetate naturally, have been invaded by rabbit/ sagebrush and have returned to a natural, post fire, appearing condition.

Based on a review of all the available information including photos, staff knowledge, and field review, the BLM concluded that the unit appears in a natural condition where the imprints of man are substantially unnoticeable.

(3) Does the unit (or the remainder of the unit if a portion has been excluded due to unnaturalness and the remainder is of sufficient size) **have outstanding opportunities for solitude?** Yes X No N/A

In 1978, the unit was found to have outstanding opportunities for solitude due to its size.

The Rehart Canyon unit is very topographically diverse. The western boundary of the unit is comprised of Upper Abert Rim, Venator Canyon, Rehart Canyon, and Rehart Butte. The

northern third of the unit has two deep canyons (Toms Bedground) and several peaks/buttes among the foothills of Little Juniper Mountain. The middle of the unit has several shallow to moderate lakebed depressions (Rehart Lake, Big and Little Brushy Lakes) and Venator Creek drainage. Western juniper has expanded in height, width, density and distribution since 1979, with a large, continuous, stand of trees in the northeast area of the unit sufficient to provide approximately 3,000 acres of vegetative screening.

Thus, for the reasons specified above and based on a review of all the available information including (BLM and citizen provided) photos, staff knowledge, and field review, the BLM concluded the Rehart Canyon inventory unit possesses outstanding opportunities for solitude where one could avoid the sights and sounds of others in the area.

(4) Does the unit (or the remainder of the unit if a portion has been excluded due to unnaturalness and the remainder is of sufficient size) **have outstanding opportunities for primitive and unconfined recreation?** Yes No N/A

In 1978, the unit was not found to have outstanding opportunities of primitive and unconfined recreation. Although hiking, horseback riding, upland bird and big game hunting was noted.

The BLM concluded that all activities listed above in combination with the diversity of camping, backpacking, sightseeing, trapping, photography, exploration, and wildlife viewing are exceptional throughout the unit. The BLM noted that opportunities for hiking along upper Abert Rim, running 17 miles along the length of the unit, represents a unique opportunity for primitive and unconfined recreation.

(5) Does the unit have supplemental values? Yes No N/A

The BLM noted the presence of archeological values and raptor nesting sites, as well as, raptor, antelope, mule deer, Californian bighorn sheep, chucker, and sage-grouse habitat.

Summary of Findings and Conclusion:

Unit Number and Name: OR-015-037/ Rehart Canyon

Summary Results of Analysis:

- 1. Does the area meet the size requirements? X Yes No
- 2. Does the area appear to be natural? X Yes No
- 3. Does the area offer outstanding opportunities for solitude or a primitive and unconfined type of recreation? X Yes No NA
- 4. Does the area have supplemental values? X Yes No NA

Conclusion (Check One):

- X The area- or a portion of the area- has wilderness character: *(items 1, 2 and 3 must be checked "yes").*
- The area does not have wilderness character: *(any of items 1, 2 and 3 are checked "no").*

Prepared by (Member Names and Titles):



Chris Bishop: Outdoor Recreation Planner

 6/4/18
Date


Jami Ludwig: Assistant Field Manager

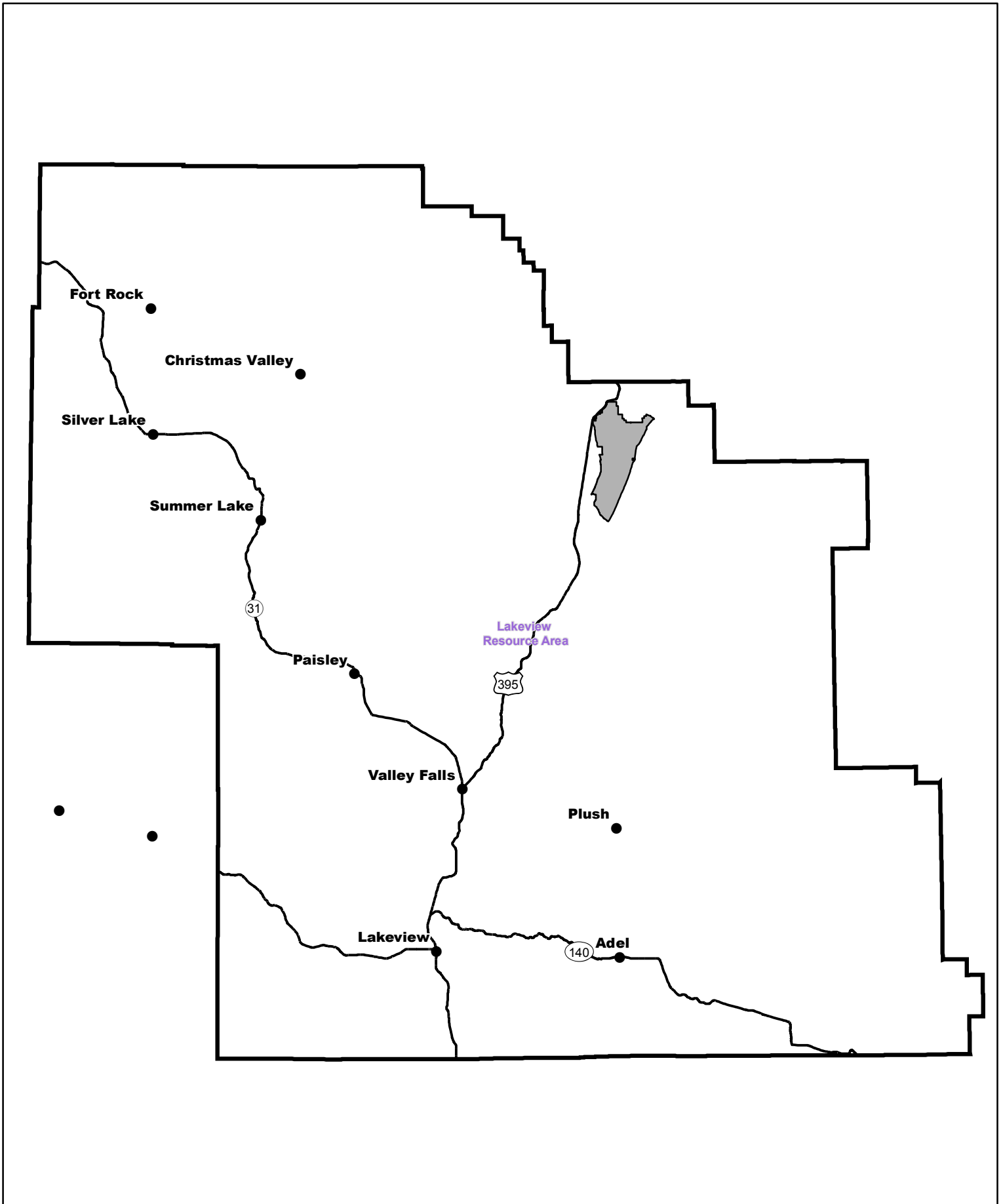
 6/4/18
Date


Approved by:

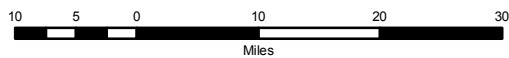

 J. Todd Forbes
J. Todd Forbes
Field Manager


 6/4/18
Date

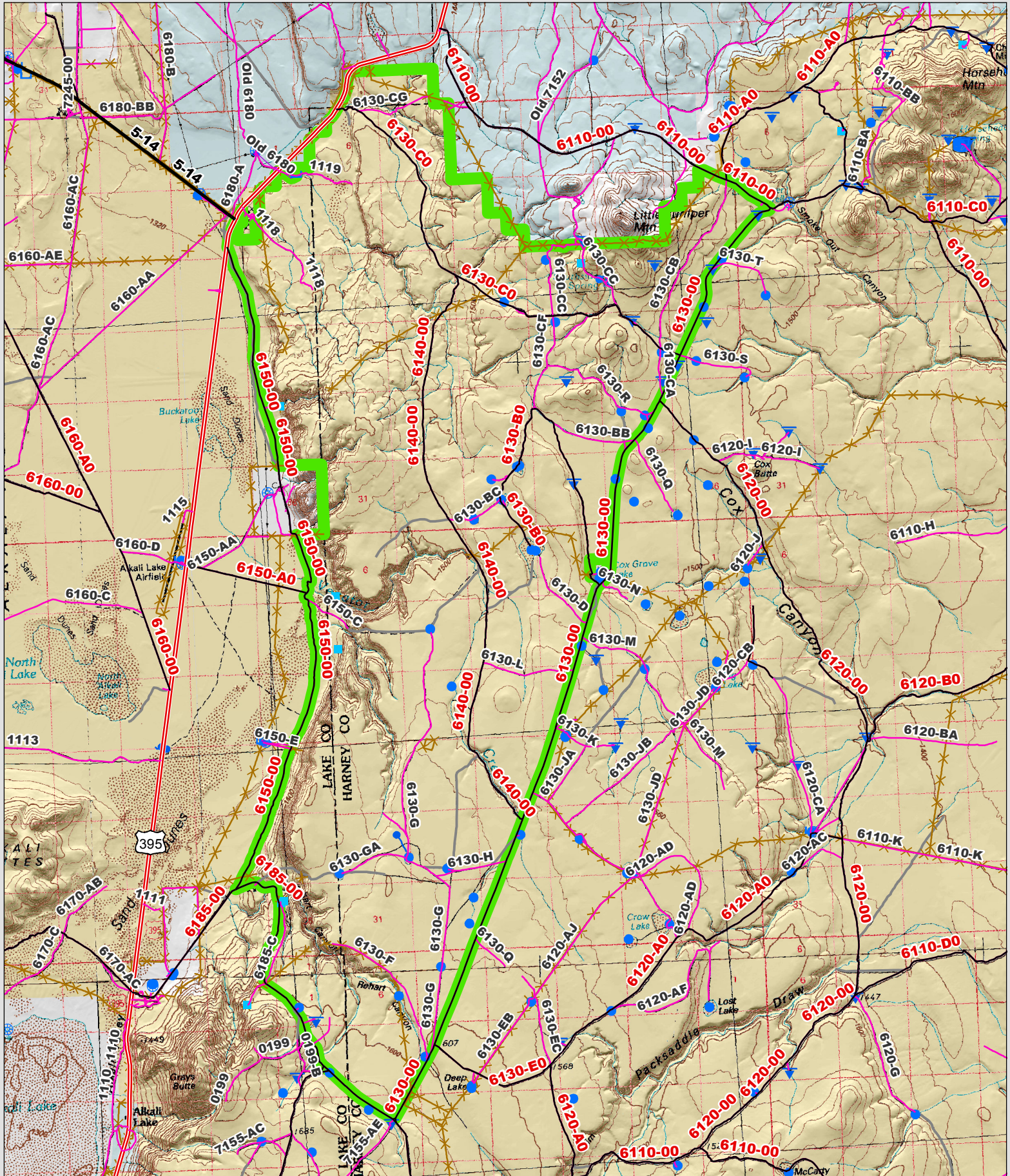
This form documents information that constitutes an inventory finding on wilderness characteristics. It does not represent a formal land use allocation or a final agency decision subject to administrative remedies under 43 CFR parts either 4 or 1610.5-2.



 Wilderness Character Inventory Unit



 No warranty is made by the Bureau of Land Management as to the accuracy, reliability, or completeness of these data for individual or aggregate use with other data. Original data were compiled from various sources. This information may not meet National Map Accuracy Standards. This product was developed through digital means and may be updated without notification.



<p>Ownership</p> <ul style="list-style-type: none"> Bureau of Land Management U.S. Forest Service State Private/Unknown 	<p>Roads/Trails</p> <ul style="list-style-type: none"> Motorized Routes Highways Reclaiming Routes Interim Routes 	<p>Pipelines and Ditches</p> <ul style="list-style-type: none"> Ditch Water Pipeline Guzzler Fences 	<p>Water Developments</p> <ul style="list-style-type: none"> Dam Reservoir Spring Development Trough Water Diversion 	<p>Water Features</p> <ul style="list-style-type: none"> Water Tank Waterhole Well - Water 	<p>2 1 0 2 Miles</p> <p>No warranty is made by the Bureau of Land Management as to the accuracy, reliability, or completeness of these data for individual or aggregate use with other data. Original data were compiled from various sources. This information may not meet National Map Accuracy Standards. This product was developed through digital means and may be updated without notification.</p>
--	---	---	--	--	---