

Year: 2018

Inventory Unit Number/Name: OR-015-073A/ Packsaddle Draw*

FORM 1

**DOCUMENTATION OF BLM WILDERNESS INVENTORY
FINDINGS ON RECORD**

1. Is there existing BLM wilderness inventory information on all or part of this area?

No _____ Yes X (if more than one unit is within the area, list the names/numbers of those units):

a) **Inventory Source:** Wilderness Inventory – Final Intensive Inventory Decisions; USDI BLM - Oregon and Washington, November 1980.

b) **Inventory Unit Number(s)/Name(s):** 1-73/ Packsaddle Draw

c) **Map Name(s)/Number(s):** Intensive Wilderness Inventory - Final Decisions; USDI BLM - Oregon, November 1980.

d) **BLM District(s)/Field Office(s):** Lakeview District, Lakeview Resource Area.

*Note: Unit name was changed to better reflect values and features found within the unit, and to reduce confusion of similarly named inventory units.

2. BLM Inventory Findings on Record:

Existing inventory information regarding wilderness characteristics (if more than one BLM inventory unit is associated with the area, list each unit and answer each question individually for each inventory unit):

Unit #	Size (historic acres)	Natural Condition? Y/N	Outstanding Solitude? Y/N	Outstanding Primitive & Unconfined Recreation? Y/N	Supplemental Values? Y/N
1-73	18,680	N	N	N	N/A
1-73A*	6,838 [†]	Y	N	N	N/A

*The inventory of this unit was updated in 2013. However, due to a State Office-sponsored Wilderness Inventory Consistency Evaluation and subsequent guidance, the 2013 inventory analysis and findings are being replaced by this current 2018 inventory review. Documentation of the 2013 inventory can be found in the wilderness inventory project record.

[†] Corrected; reported acreage of 10,365 from 2013 analysis was in error.

Summarize any known primary reasons for prior inventory findings listed in this table):

The previous inventory in 1980 described this unit as having moderately rolling terrain, which drops off sharply to the east approaching Dry Valley. The major feature was Packsaddle Draw, which runs east to west through the center of the unit. The draw contained some prominent erosion features and basalt outcrops, but was less than 100 feet deep. The western third of the unit was a much flatter sagebrush area. This unit was found not to be in a natural condition generally free from the works of man. The original inventory noted the presence numerous range improvements, fence enclosures, water developments, and interior motorized routes as the rationale that the works of man were substantially noticeable throughout the unit. The inventory concluded that solitude could be found in Packsaddle Draw, but overall was limited within the area due to the unit's narrow width of one to four miles. Primitive recreation opportunities were listed as hunting, hiking, and wildlife observation, but were found to be less than outstanding. Archeological values were thought to exist within the unit, although none were specifically documented in the inventory.

FORM 2

**DOCUMENTATION OF CURRENT WILDERNESS INVENTORY
CONDITIONS**

Unit Number/Name: OR-015-073A/ Packsaddle Draw

(1) Is the unit of sufficient size? Yes No

From 2008 to 2016, the BLM conducted a field inventory of the area to update its road and wilderness inventory and to gather additional information. This fieldwork included photo documentation of the boundary and interior routes and a re-evaluation of wilderness characteristics for this area. Using both citizen provided and BLM photos, field logs, and staff field knowledge, the BLM completed route analysis and made boundary determinations within the area in 2017.

The BLM determined that the inventory unit is bounded by BLM Roads 6120-A0 (Crow Lake) on the north and west; BLM Road 6110-00 (Dry Valley) on the south; and BLM Road 6120-00 (Cox Canyon) on the east. Based on these boundary determinations, historic unit 1-73 was divided into 3 smaller inventory units. This evaluation focuses on the unit 1-73A.

Thus, based on these boundary and road determinations, the BLM found the Packsaddle Draw inventory unit to exceed the minimum size criteria at approximately 6,838 acres of BLM-administered lands.

Additional background on the process that the BLM followed during this evaluation is contained in the document, *Wilderness Inventory Maintenance Process for the Lakeview Resource Area, BLM* and in the *Route Analysis Forms*. Both documents can be found in the wilderness inventory file.

DESCRIPTION OF CURRENT CONDITIONS:

Unit OR-015-073A is approximately 5 miles long by 2.5 miles wide and is located approximately eight miles east of Alkali Lake, Oregon. The current unit is dominated by Packsaddle Draw (250 feet deep), which runs the length of the unit, with prominent erosion features and basalt outcrops. In addition, the unit contains Upper Packsaddle Draw, Rehart Rim, and the upper reaches of an unnamed canyon along the northern boundary. Outside of these canyons, the unit can be described as rolling terrain. A wildfire burned through most the unit in 1986 and 2001. Revegetation has been successful with sagebrush, rabbit brush, and grass (native and non-native) currently dominate the unit.

(2) Is the unit in a natural condition? Yes X No _____ N/A _____

The 1980 inventory evaluated a larger historic unit (1-73) and found that it was unnatural in character. The current inventory unit has been reduced in size due to the identification of additional boundary roads that now break up the original inventory unit into smaller subunits that must be evaluated separately.

The BLM found the following man-made developments/disturbances within the unit: 6,786 acres of wildfire, 110 acres of seeding, 4 waterholes, 4 miles of motorized routes, and 0.5 miles of reclaiming routes.

Presently, almost 4 decades after the original inventory, these developments are weathered and grown over with herbaceous grasses and sagebrush. As a result, developments now fade into the background of the unit and are largely only noticeable at a close distance (1/4th mile or less) and are thus substantially unnoticeable from further distances. The topography of unit, with numerous canyons throughout, plays a large role in screening disturbances and man-made developments. In addition, the majority of the remaining disturbances are located near the perimeter of the unit and, as such, have a small area of influence. Areas that were seeded or allowed to revegetate naturally, have been invaded by rabbit bush, sagebrush, and grasses and have returned to a natural, post fire, appearing condition.

Based on a review of all the available information including photos, staff knowledge, and field review, the BLM concluded that the unit appears in a natural condition where the imprints of man are substantially unnoticeable.

(3) Does the unit (or the remainder of the unit if a portion has been excluded due to unnaturalness and the remainder is of sufficient size) **have outstanding opportunities for solitude?** Yes X No _____ N/A _____

The 1980 inventory evaluated a larger historic unit (1-73) and found that it contained some opportunity for solitude in the Packsaddle Draw vicinity, but was less than outstanding. The current inventory unit has been reduced in size due to the identification of additional boundary roads that now break up the original inventory unit into smaller subunits that must be evaluated separately.

The BLM determined that although the unit has reduced in size from the original inventory, the most topographically diverse areas (Packsaddle Draw, Upper Packsaddle Draw, Rehart Rim, and the upper reaches of an unnamed canyon along the northern boundary), are still included. Packsaddle Draw (250 feet deep), which runs the length of the unit, with prominent erosion features and basalt outcrops provides outstanding screening across the unit.

Thus, for the reasons specified above and based on a review of all the available information including (BLM and citizen provided) photos, staff knowledge, and field review, the BLM concluded the Packsaddle Draw inventory unit possesses outstanding opportunities for solitude where one could avoid the sights and sounds of others in the area.

(4) Does the unit (or the remainder of the unit if a portion has been excluded due to unnaturalness and the remainder is of sufficient size) **have outstanding opportunities for primitive and unconfined recreation?** Yes X No _____ N/A _____

The 1980 inventory evaluated a larger historic unit (1-73) and found that it contained opportunities for primitive and unconfined recreation such as hiking, hunting, and wildlife observation. However, overall these opportunities were less than outstanding. The current inventory unit has been reduced in size due to the identification of additional boundary roads that now break up the original inventory unit into smaller subunits that must be evaluated separately.

The BLM determined that although the unit has reduced in size from the original inventory, the remaining area possesses abundant opportunities for all activities listed above in combination with the diversity of camping, backpacking, horse-riding, trapping, sightseeing, exploration, and photography across the unit. The BLM noted that opportunities for hiking within the numerous deep, broken, canyons of Packsaddle and Upper Packsaddle Draw represent unique opportunities for primitive and unconfined recreation.

(5) Does the unit have supplemental values? Yes X No _____ N/A _____

The BLM noted the presence of archeological and geological values, as well as pronghorn antelope habitat.

Summary of Findings and Conclusion

Unit Number and Name: OR-015-073A/ Packsaddle Draw

Summary Results of Analysis:

- 1. Does the area meet the size requirements? X Yes No
- 2. Does the area appear to be natural? X Yes No
- 3. Does the area offer outstanding opportunities for solitude or a primitive and unconfined type of recreation? X Yes No NA
- 4. Does the area have supplemental values? X Yes No NA

Conclusion (Check One):

- X The area- or a portion of the area- has wilderness character: *(items 1, 2 and 3 must be checked "yes")*.
- The area does not have wilderness character: *(any of items 1, 2 and 3 are checked "no")*.

Prepared by (Member Names and Titles):



Chris Bishop: Outdoor Recreation Planner

6/4/18
Date


Jami Ludwig: Assistant Field Manager

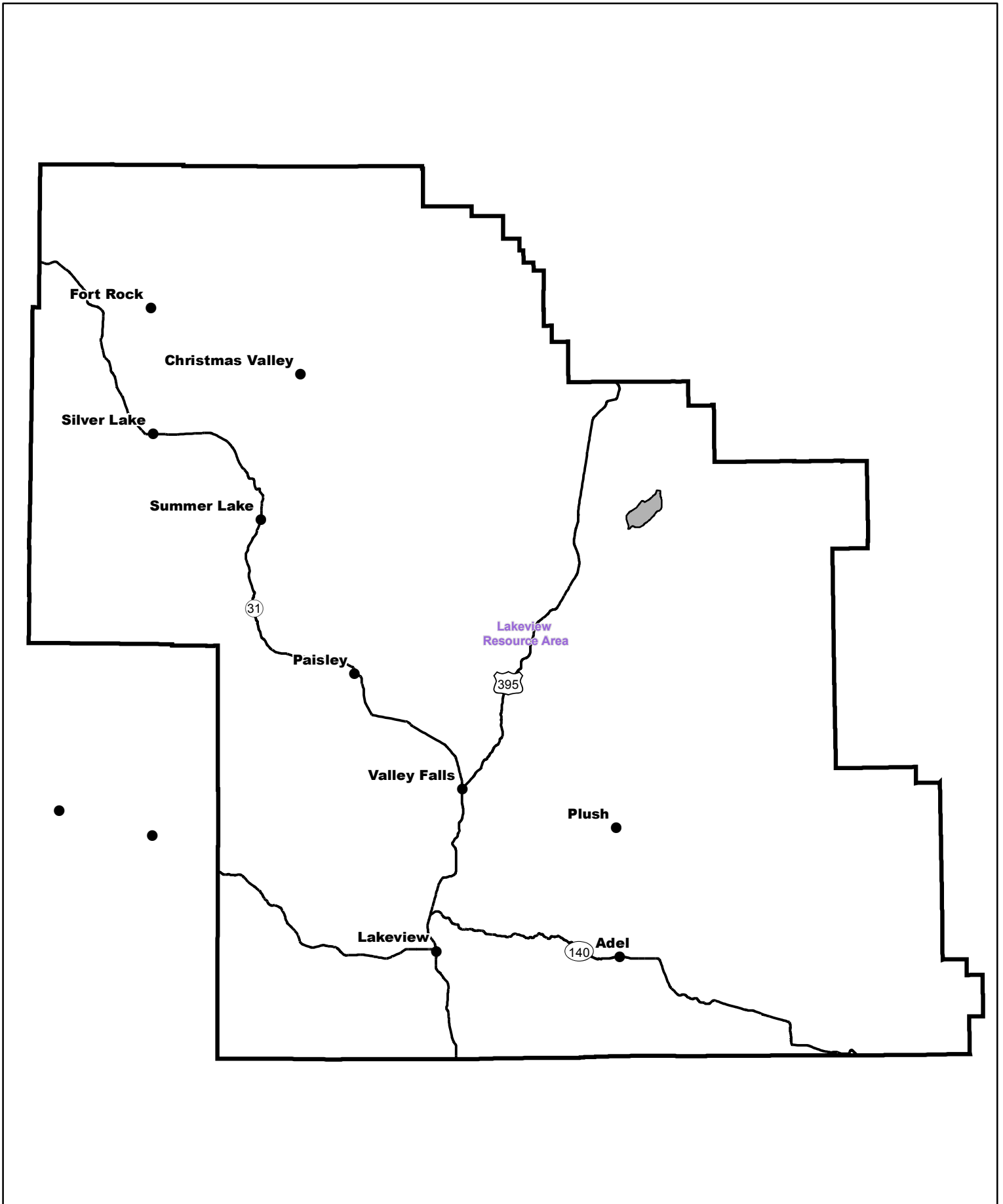
6/4/18
Date


Approved by:


J. Todd Forbes
Field Manager


6/4/18
Date

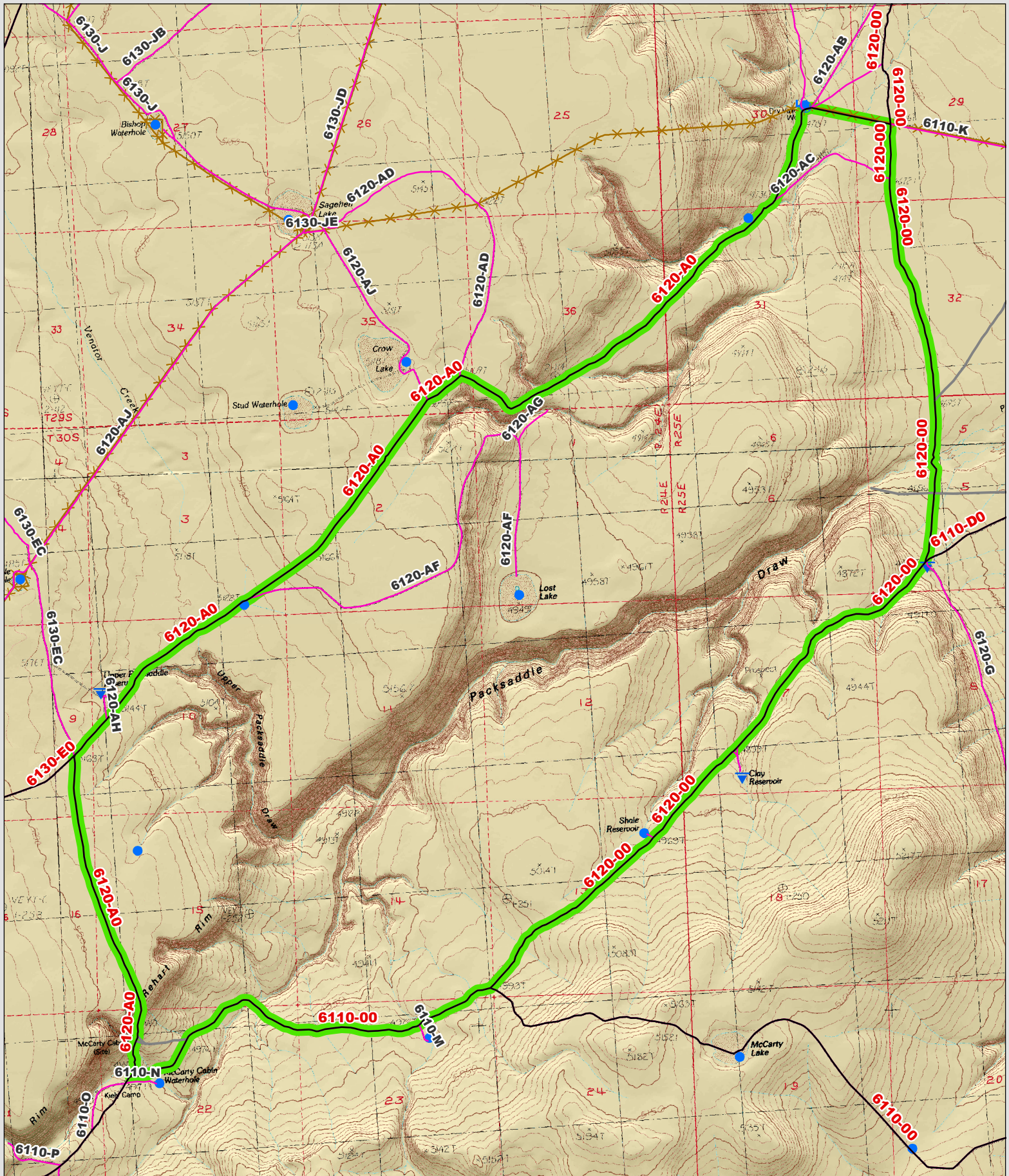
This form documents information that constitutes an inventory finding on wilderness characteristics. It does not represent a formal land use allocation or a final agency decision subject to administrative remedies under 43 CFR parts either 4 or 1610.5-2.



 Wilderness Character Inventory Unit



 No warranty is made by the Bureau of Land Management as to the accuracy, reliability, or completeness of these data for individual or aggregate use with other data. Original data were compiled from various sources. This information may not meet National Map Accuracy Standards. This product was developed through digital means and may be updated without notification.



Wilderness Character Inventory Unit

Ownership

- Bureau of Land Management
- U.S. Forest Service
- State
- Private/Unknown

Roads/Trails

- Motorized Routes
- Highways
- Reclaiming Routes
- Interim Routes

Pipelines and Ditches

- Ditch
- Water Pipeline
- Guzzler
- Fences

Water Developments

- Dam
- Reservoir
- Spring Development
- Trough
- Water Diversion

- Water Tank
- Waterhole
- Well - Water

0.8 0.4 0 0.8 Miles

North Arrow

Disclaimer

No warranty is made by the Bureau of Land Management as to the accuracy, reliability, or completeness of these data for individual or aggregate use with other data. Original data were compiled from various sources. This information may not meet National Map Accuracy Standards. This product was developed through digital means and may be updated without notification.