

Year: 2018

Inventory Unit Number/Name: OR-015-205/ Oatman*

FORM 1

**DOCUMENTATION OF BLM WILDERNESS INVENTORY
FINDINGS ON RECORD**

1. Is there existing BLM wilderness inventory information on all or part of this area?

No _____ Yes X (if more than one unit is within the area, list the names/numbers of those units):

a) Inventory Source:

- a. Wilderness – Proposed Initial Inventory: Roadless Areas and Islands Which Clearly Do Not Have Wilderness Characteristics; USDI BLM - Oregon and Washington, April 1979.
- b. Wilderness Review – Initial Inventory: Final Decision on Public Lands Obviously Lacking Wilderness Characteristics and Announcement of Public Lands to be Intensively Inventoried for Wilderness Characteristics; USDI BLM - Oregon and Washington, August 1979.
- c. Wilderness Review – Intensive Inventory: Final Decisions On 30 Selected Units in Southeast Oregon and Proposed Decisions On Other Intensively Inventoried Units; USDI BLM - Oregon and Washington, March 1980.
- d. Wilderness Inventory – Final Intensive Inventory Decisions; USDI BLM - Oregon and Washington, November 1980.

b) Inventory Unit Number(s)/ Name(s): N/A

c) Map Name(s)/Number(s):

- a. Proposed Initial Inventory: Roadless Areas and Islands Which Do Not Have Wilderness Characteristics; USDI BLM - Oregon, April 1979.
- b. Final Decision - Initial Wilderness Inventory: Public Lands and Islands Which Do Not Have Wilderness Characteristics and Units To Be Intensively Inventoried; USDI BLM - Oregon, August 1979.
- c. Intensive Wilderness Inventory: Final Decisions For 30 Selected Inventory Units and Proposed Decisions For Other Intensive Inventory Units; USDI BLM - Oregon, March 1980.
- d. Intensive Wilderness Inventory - Final Decisions; USDI BLM - Oregon, November 1980.

d) **BLM District(s)/Field Office(s):** Lakeview District, Lakeview Resource Area.

*Note: Unit name was changed to better reflect values and features found within the unit, and to reduce confusion of similarly named inventory units.

2. BLM Inventory Findings on Record:

Existing inventory information regarding wilderness characteristics (if more than one BLM inventory unit is associated with the area, list each unit and answer each question individually for each inventory unit):

Unit #	Size (historic acres)	Natural Condition? Y/N	Outstanding Solitude? Y/N	Outstanding Primitive & Unconfined Recreation? Y/N	Supplemental Values? Y/N
205*	(-)5,000	NA	NA	NA	NA

* The inventory of this unit was updated in 2010. However, due to a State Office-sponsored Wilderness Inventory Consistency Evaluation and subsequent guidance, the 2010 inventory analysis and findings are being replaced by this current 2018 inventory review. Documentation of the 2010 inventory can be found in the wilderness inventory project record.

Summarize any known primary reasons for prior inventory findings listed in this table:

No summaries are available for these small units, presumably because they all were found to be smaller than 5,000 acres during the previous inventory and were not documented in detail.

FORM 2

DOCUMENTATION OF CURRENT WILDERNESS INVENTORY CONDITIONS

Unit Number/Name: OR-015-205/ Oatman

(1) Is the unit of sufficient size? Yes X No _____

Between 2006 and 2016, BLM staff conducted field inventory in the area as part of a process to update its road and wilderness inventories and to gather additional information to supplement ONDA’s wilderness information. This fieldwork included photo documentation of the boundary and interior routes and a re-evaluation of wilderness characteristics for this area. Using both ONDA and BLM photos, field

logs, and staff field knowledge, the BLM completed route analysis within the area in 2017.

The BLM determined that the inventory unit is bounded by BLM Roads 6137-00, U.S. Forest Service, a residential power line right-of-way, and private lands to the north; 6137-00, 6137-D0, a residential power line right-of-way, and private lands to the east; 6137-00, U.S. Forest Service Road 2780-281, a right-of-way for County Road 4-10, a residential power line right-of-way, and private lands to the south; and U.S. Forest Service lands to the west. Due to findings that sections of BLM Road 6137-00 no longer meet the wilderness definition of a road, approximately 4,277 acres of BLM lands to the east were added to the unit. A portion of BLM Road 6137-C0 and BLM interim numbered road 1173-00 were cherry stemmed for access to private property the Buck Creek Watchable Wildlife Recreation Site. Additionally, due to changes in boundary determinations (roads and power line right-of-ways buffer corrections) and cutout of unnatural features (water tank and trespasses including mobile home/trailer, vehicles, yard, trash, fence lines, agricultural fields, water tank, farm equipment, dump, and irrigation ditches), approximately 16 acres were removed from this unit.

Thus, based on these boundary and road determinations, the BLM found the Oatman inventory unit to exceed the minimum size criteria at approximately 11,515 acres of BLM-administered lands.

Additional background on the process that the BLM followed during this evaluation is contained in the document, *Wilderness Inventory Maintenance Process for the Lakeview Resource Area, BLM* and in the *Route Analysis Forms*. Both documents can be found in the wilderness inventory file.

DESCRIPTION OF CURRENT CONDITIONS:

This unit is located approximately 3 miles northwest of Silver Lake, Oregon. The unit is approximately 7 miles long by 4 miles wide, with one 312-acre inholding in the western eastern of the unit. Topographically the unit is relatively flat in the east, with rolling terrain and small to moderate buttes (25- 100 ft. high) to the east. The unit contains a few low to moderate rims (50-150 ft. high) in the southwest and central portions of the unit. However, the eastern border is comprised of a large (275 ft. high) rim running 4.5 miles north to south. Buck Creek (100-200 ft. deep), located in the southeast corner of the unit, runs 2 miles from west to east. There are also 3 minor drainages (10-25 ft. deep) in the southern and northern and southern portion of the unit totaling 4.5 miles. The unit also contains 2 ephemeral lakebed depression at Lilly Lake (20 - 75ft. deep). Vegetatively, approximately 10,000 acres of the unit is covered in moderate to high-density western juniper stands, with old-growth characteristics in the southwest and northeast, and along interior drainages and rims. The remaining vegetation is scattered juniper, sagebrush, rabbit brush, and grass. In addition, the unit has received approximately 4,153 acres of mechanical treatments/prescribed burns to thin juniper trees between 1960 and 2006.

(2) Is the unit in a natural condition? Yes No N/A

The unit currently contains the following man-made developments/disturbances: 4153 acres of fuel treatments/ prescribed burns, 1,787 acres of seedings, 16.5 miles of fence lines, 25 miles of motored routes, 3 miles of reclaiming routes, 13 waterholes, and 2 rehabbed mineral pits.

Presently, almost 4 decades after the original inventory, these developments are weathered and grown over with herbaceous grasses, sagebrush, and juniper. As a result, developments now fade into the background of the unit and are largely only noticeable at a close distance (1/4th mile or less) and are thus substantially unnoticeable from further distances. The topography and vegetation of the area also plays a large role in screening disturbances and man-made developments. Furthermore, many of the disturbances are located near the perimeter of the unit and, as such, have a small area of influence. In addition, juniper reduction projects have been successfully planned and executed to reduce impacts to visuals and naturalness. Areas that were seeded and allowed to revegetate naturally after mechanical treatments and prescribed burns, have been invaded by rabbit/ sagebrush and have returned to a natural, post fire, appearing condition.

Based on a review of all the available information including photos, staff knowledge, and field review, the BLM concluded that the unit appears in a natural condition where the imprints of man are substantially unnoticeable.

(3) Does the unit (or the remainder of the unit if a portion has been excluded due to unnaturalness and the remainder is of sufficient size) have outstanding opportunities for solitude? Yes No N/A

The BLM determined that there are several outstanding opportunities for solitude across the unit due to mostly to vegetative and topographic screening (to a lesser degree). Topographically the unit is relatively flat in the east, with rolling terrain and small to moderate buttes (25- 100 ft. high) to the east. The unit contains a few low to moderate rims (50-150 ft. high) in the southwest and central portions of the unit. However, the eastern border is comprised of a large (275 ft. high) rim running 4.5 miles north to south. Buck Creek (100-200 ft. deep), located in the southeast corner of the unit, runs 2 miles from west to east. There are also 3 minor drainages (10-25 ft. deep) in the southern and northern and southern portion of the unit totaling 4.5 miles. The unit also contains 2 ephemeral lakebed depression at Lilly Lake (20 - 75ft. deep). Vegetatively, western juniper stands have greatly expanded in height, width, and density. Approximately 10,000 acres of the unit is covered in moderate to high-density western juniper stands, with old-growth characteristics in the southwest and northeast, and along interior drainages and rims. Due to the above-described compartmentalized topography and vegetative conditions within the unit, one would easily be able to avoid the sights and sounds of others within the unit.

Thus, for the reasons specified above and based on a review of all the available information including (BLM and citizen provided) photos, staff knowledge, and field review, the BLM concluded the Oatman inventory unit possesses outstanding opportunities for solitude.

(4) Does the unit (or the remainder of the unit if a portion has been excluded due to unnaturalness and the remainder is of sufficient size) **have outstanding opportunities for primitive and unconfined recreation?** Yes No N/A

The BLM finds the combination and diversity of hiking, horseback riding, backpacking, camping, wildlife observation, exploration, scenery, photography, fishing, trapping, hunting, and stargazing, are exceptional. The BLM determined that hiking along and fishing in Buck Creek, as well as, exploration and route finding through the unit's dense juniper stands represent unique opportunities for primitive and unconfined recreation.

(5) Does the unit have supplemental values? Yes No N/A

The BLM found the unit to possess archaeological and geological values as well as the presence of mule deer, elk, bald and golden eagle, pinyon jay, Clark's nutcracker, and redband trout habitat.

Summary of Findings and Conclusion

Unit Number and Name: OR-015-205/ Oatman

Summary Results of Analysis:

- 1. Does the area meet the size requirements? X Yes No
- 2. Does the area appear to be natural? X Yes No
- 3. Does the area offer outstanding opportunities for solitude or a primitive and unconfined type of recreation? X Yes No NA
- 4. Does the area have supplemental values? X Yes No NA

Conclusion (Check One):

- X The area- or a portion of the area- has wilderness character: *(items 1, 2 and 3 must be checked "yes")*.
- The area does not have wilderness character: *(any of items 1, 2 and 3 are checked "no")*.

Prepared by (Member Names and Titles):

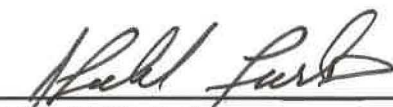

Chris Bishop: Outdoor Recreation Planner

6/4/18
Date


Jami Ludwig: Assistant Field Manager

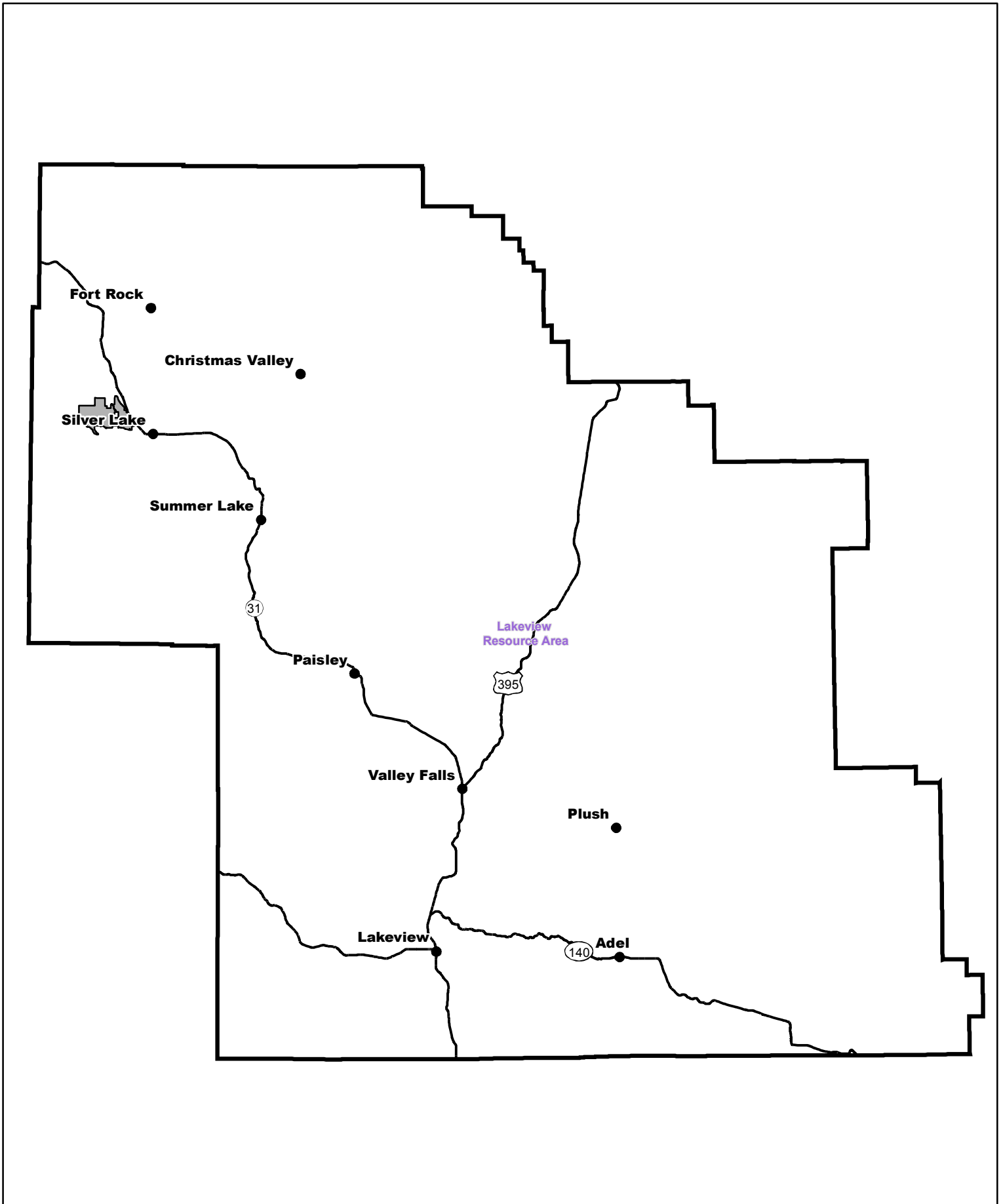
6/4/18
Date


Approved by:

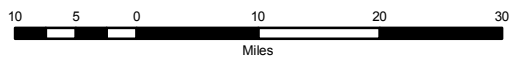

J. Todd Forbes
Field Manager


6/4/18
Date

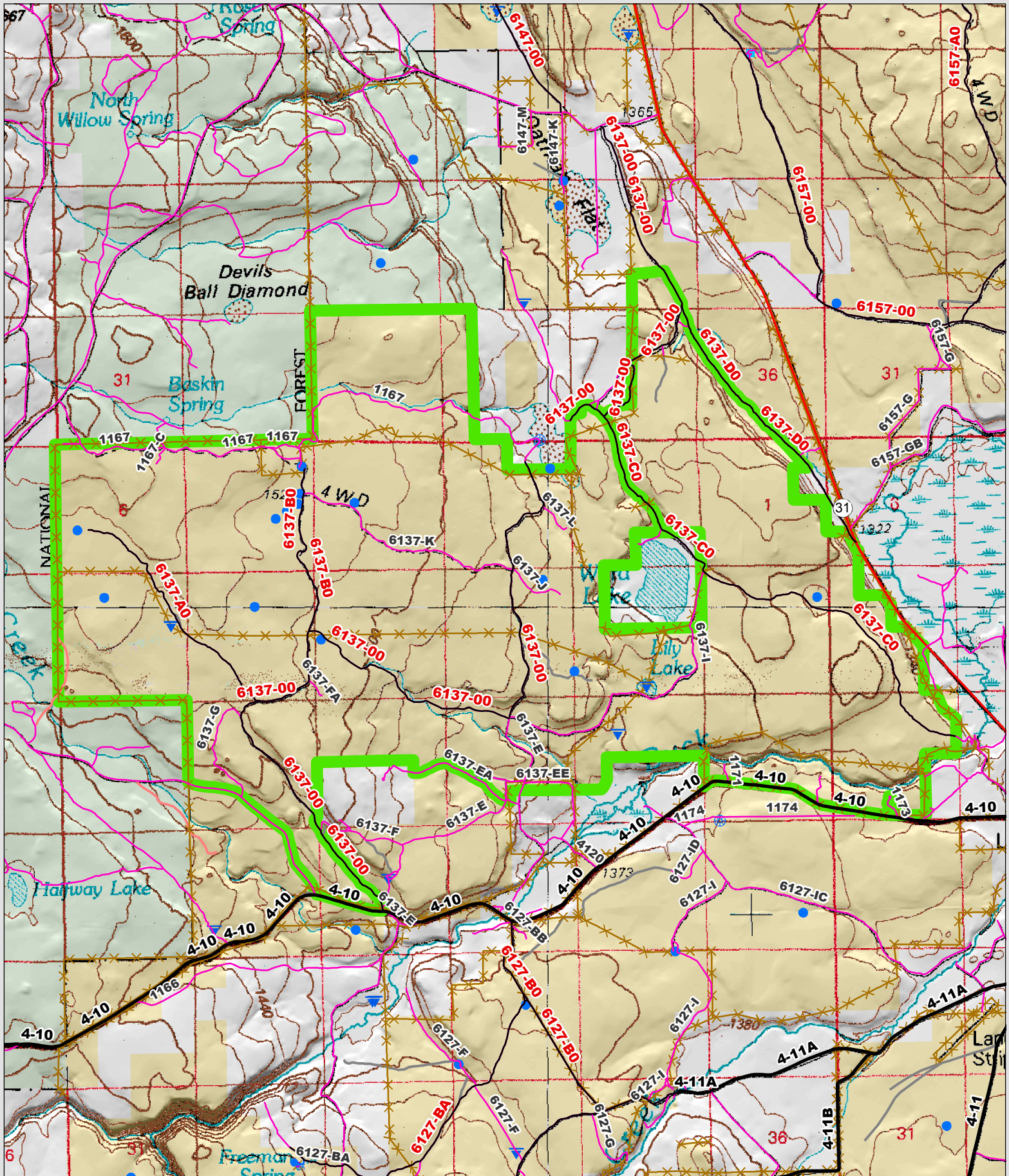
This form documents information that constitutes an inventory finding on wilderness characteristics. It does not represent a formal land use allocation or a final agency decision subject to administrative remedies under 43 CFR parts either 4 or 1610.5-2.



 Wilderness Character Inventory Unit



 No warranty is made by the Bureau of Land Management as to the accuracy, reliability, or completeness of these data for individual or aggregate use with other data. Original data were compiled from various sources. This information may not meet National Map Accuracy Standards. This product was developed through digital means and may be updated without notification.



Wilderness Character Inventory Unit	Roads/Trails	Pipelines and Ditches	Water Developments	1 0.5 0 1 Miles
Ownership	Motorized Routes	Ditch	Dam	
Bureau of Land Management	Highways	Water Pipeline	Water Tank	
U.S. Forest Service	Reclaiming Routes	Guzzler	Waterhole	<p>No warranty is made by the Bureau of Land Management as to the accuracy, reliability, or completeness of these data for individual or aggregate use with other data. Original data were compiled from various sources. This information may not meet National Map Accuracy Standards. This product was developed through digital means and may be updated without notification.</p>
Private/Unknown	Interim Routes	Fences	Spring Development	
		Trough	Well - Water	
		Water Diversion		