

Year: 2018

Inventory Unit Number/Name: OR-015-210/ Monument Rock

FORM 1

**DOCUMENTATION OF BLM WILDERNESS INVENTORY
FINDINGS ON RECORD**

1. Is there existing BLM wilderness inventory information on all or part of this area?

No _____ Yes X (if more than one unit is within the area, list the names/numbers of those units):

a) Inventory Source:

- a. Wilderness – Proposed Initial Inventory: Roadless Areas and Islands Which Clearly Do Not Have Wilderness Characteristics; USDI BLM - Oregon and Washington, April 1979.
- b. Wilderness Review – Initial Inventory: Final Decision on Public Lands Obviously Lacking Wilderness Characteristics and Announcement of Public Lands to be Intensively Inventoried for Wilderness Characteristics; USDI BLM - Oregon and Washington, August 1979.
- c. Wilderness Review – Intensive Inventory: Proposed Decision on the Intensive Wilderness Inventory of Selected Area; USDI BLM – Oregon, October 1979.
- d. Wilderness Review – Intensive Inventory: Final Decisions On 30 Selected Units in Southeast Oregon and Proposed Decisions On Other Intensively Inventoried Units; USDI BLM - Oregon and Washington, March 1980.
- e. Wilderness Inventory – Final Intensive Inventory Decisions; USDI BLM - Oregon and Washington, November 1980.

b) Inventory Unit Number(s)/ Name(s): N/A

c) Map Name(s)/Number(s):

- a. Proposed Initial Inventory: Roadless Areas and Islands Which Do Not Have Wilderness Characteristics; USDI BLM - Oregon, April 1979.
- b. Final Decision - Initial Wilderness Inventory: Public Lands and Islands Which Do Not Have Wilderness Characteristics and Units To Be Intensively Inventoried; USDI BLM - Oregon, August 1979.
- c. Proposed Decision: Intensive Wilderness Inventory of Selected Areas; USDI BLM - Oregon, October 1979.

- d. Intensive Wilderness Inventory: Final Decisions For 30 Selected Inventory Units and Proposed Decisions For Other Intensive Inventory Units; USDI BLM - Oregon, March 1980.
- e. Intensive Wilderness Inventory - Final Decisions; USDI BLM - Oregon, November 1980.

d) BLM District(s)/Field Office(s): Lakeview District, Lakeview Resource Area.

2. BLM Inventory Findings on Record:

Existing inventory information regarding wilderness characteristics (if more than one BLM inventory unit is associated with the area, list each unit and answer each question individually for each inventory unit):

Unit #	Size (historic acres)	Natural Condition? Y/N	Outstanding Solitude? Y/N	Outstanding Primitive & Unconfined Recreation? Y/N	Supplemental Values? Y/N
1-210*	5,977	Y	N	N	N/A

* The inventory of this unit was updated in 2011. However, due to a State Office-sponsored Wilderness Inventory Consistency Evaluation and subsequent guidance, the 2011 inventory analysis and findings are being replaced by this current 2018 inventory review. Documentation of the 2011 inventory can be found in the wilderness inventory project record.

Summarize any known primary reasons for prior inventory findings listed in this table:

The original 1979/1980 inventory did not include information regarding wilderness characteristics of this unit, presumably because it did not meet the size requirements at that time.

FORM 2

DOCUMENTATION OF CURRENT WILDERNESS INVENTORY CONDITIONS

Unit Number/Name: OR-015-210/ Monument Rock

(1) Is the unit of sufficient size? Yes No

Between 2008 and 2016, BLM staff conducted field inventory in the area as part of a process to update its road and wilderness inventories and to gather additional information to supplement ONDA’s wilderness information. This fieldwork included photo documentation of the boundary and interior routes and a re-evaluation of wilderness characteristics for this

area. Using both ONDA and BLM photos, field logs, and staff field knowledge, the BLM completed route analysis within the area in 2017.

The BLM determined that the inventory unit is bounded by State Highway 31 right-of-way, BLM Interim numbered Roads 1139-00, 1139-E0, and private lands to the north; private lands to east; U.S. Forest Service Road 3315-0000 right-of-way, U.S. Forest Service lands, and private lands to the south; and U.S. Forest Service lands, and private lands to the west. Due to changes in boundary determinations (road rights-of-ways buffer corrections) and cut-outs of unnatural features (mineral pits, power lines, motorized routes, ODOT substation, pump house, well, waterhole, and troughs), approximately 255 acres were removed from the unit.

Thus, based on these boundary and road determinations, the BLM found the Monument Rock inventory unit to exceed the minimum size criteria at approximately 5,722 acres of BLM-administered lands.

Additional background on the process that the BLM followed during this evaluation is contained in the document, *Wilderness Inventory Maintenance Process for the Lakeview Resource Area, BLM* and in the *Route Analysis Forms*. Both documents can be found in the wilderness inventory file.

DESCRIPTION OF CURRENT CONDITIONS:

The unit is located approximately 2 miles west Paisley, Oregon. The unit is approximately 5.5 miles long by 3.5 miles wide and contains one 424-acre private inholding.

Topographically, the unit is very diverse containing a broken plateau of rims, buttes, peaks, ridges, saddles, draws, drainages, and small lake depressions. The northern portion of the unit is comprised of a broken rim of peaks and buttes (600-1700 ft. high), overlooking Summer Lake to the north. The southeastern boundary is characterized by the upper slopes of the Chewaucan River and Mill Creek Canyons (800 ft. deep to 650 ft. deep within the unit respectively). The central portion of the unit contains the unit's highest peaks (6,057 ft. elevation), 4 small lake depressions (200 ft. deep), including Twin Lakes, and Worlow Creek Canyon (200 - 700 ft. deep and runs 3 miles south to north). Vegetatively, the unit contains numerous western juniper stands and some ponderosa pine stands along the southwestern border. Approximately 1,500 acres of the unit is covered with moderate to high-density juniper stands, much of which is old-growth. The remaining vegetation is scattered juniper, sagebrush, rabbit brush, and grass. Additionally, a wildfire burned approximately 2,250 acres in the eastern half of the unit in 2016.

(2) Is the unit in a natural condition? Yes No N/A

The original 1979/1980 inventory did not include information regarding the naturalness of this unit, presumably because it did not meet the size requirements at that time.

The unit currently contains the following man-made developments/disturbances: 2,245 acres of wildfire, 2,267 acres of chemical treatments, 1,593 acres of fuels/mechanical treatments,

65 acres of seeding, 6.5 miles of fence lines, 5 miles of motorized routes, 4 waterholes, and 1 rehabbed mineral pit.

Presently, almost 4 decades after the original inventory, these developments are weathered and grown over with herbaceous grasses, sagebrush, and juniper. As a result, developments now fade into the background of the unit and are largely only noticeable at a close distance (1/4th mile or less) and are thus substantially unnoticeable from further distances. The topography and vegetation of the area also plays a large role in screening disturbances and man-made developments. Furthermore, many of the disturbances are located near the perimeter of the unit and, as such, have a small area of influence. Additionally, the wildfire in 2016 effectively rehabbed unnatural features of previous fuel/ mechanical treatments and minimal impact suppression tactics (MIST) were utilized to reduce impacts to naturalness during fire suppression activities. Furthermore, areas that were allowed to revegetate naturally after wildfire being invaded by juniper, rabbit bush, sagebrush, and grasses and are in the process of returning to a natural, post fire, appearing condition.

Based on a review of all the available information including photos, staff knowledge, and field review, the BLM concluded that the unit appears in a natural condition where the imprints of man are substantially unnoticeable.

(3) Does the unit (or the remainder of the unit if a portion has been excluded due to unnaturalness and the remainder is of sufficient size) **have outstanding opportunities for solitude?** Yes No N/A

The original 1979/1980 inventory did not include information regarding solitude within this unit, presumably because it did not meet the size requirements at that time.

The BLM determined that there are several outstanding opportunities for solitude across the unit due to topographic and vegetative screening. Topographically, the unit is very diverse containing a broken plateau of rims, buttes, peaks, ridges, saddles, draws, drainages, and small lake depressions. The northern portion of the unit is comprised of a broken rim of peaks and buttes (600-1700 ft. high), overlooking Summer Lake to the north. The southeastern boundary is characterized by the upper slopes of the Chewaucan River and Mill Creek Canyons (800 ft. deep to 650 ft. deep within the unit respectively). The central portion of the unit contains the unit's highest peaks (6,057 ft. elevation), 4 small lake depressions (200 ft. deep), including Twin Lakes, and Worlow Creek Canyon (200 - 700 ft. deep and runs 3 miles south to north). Vegetatively, western juniper stands have greatly expanded in height, width, and density. There are numerous western juniper stands across the unit and some ponderosa pine stands along the southwestern border. Approximately 1,500 acres of the unit is covered with moderate to high-density juniper stands, much of which is old-growth. Despite a wildfire in 2016, the majority of juniper stands that contributed to screening have persisted as the fire was not stand replacing and instead resulted in a thinning of most existing stands. Due to the above-described compartmentalized topography and vegetative screening throughout the unit, one would easily be able to avoid the sights and sounds of others.

Thus, for the reasons specified above and based on a review of all the available information including (BLM and citizen provided) photos, staff knowledge, and field review, the BLM concluded the Monument Rock inventory unit possesses outstanding opportunities for solitude.

(4) Does the unit (or the remainder of the unit if a portion has been excluded due to unnaturalness and the remainder is of sufficient size) **have outstanding opportunities for primitive and unconfined recreation?** Yes No N/A

The original 1979/1980 inventory did not include information regarding primitive and unconfined recreation within this unit, presumably because it did not meet the size requirements at that time.

The BLM finds the combination and diversity of hiking, horseback riding, backpacking, camping, wildlife observation, exploration, scenery, photography, trapping, and hunting, are exceptional. The BLM determined that options for hiking from peak to peak along the northern rim and up Worlow Creek Canyon, as well as, camping in proximity to the units interior waterbodies represent a unique opportunities for primitive and unconfined recreation.

5) Does the unit have supplemental values? Yes No N/A

The BLM found the unit to possess archaeological and geological values as well as the presence of mule deer, golden eagle, and California bighorn sheep habitat.

Summary of Findings and Conclusion

Unit Number and Name: OR-015-210/ Monument Rock

Summary Results of Analysis:

- 1. Does the area meet the size requirements? X Yes No
- 2. Does the area appear to be natural? X Yes No
- 3. Does the area offer outstanding opportunities for solitude or a primitive and unconfined type of recreation? X Yes No NA
- 4. Does the area have supplemental values? X Yes No NA

Conclusion (Check One):

- X The area- or a portion of the area- has wilderness character: *(items 1, 2 and 3 must be checked "yes")*.
- The area does not have wilderness character: *(any of items 1, 2 and 3 are checked "no")*.

Prepared by (Member Names and Titles):


Chris Bishop: Outdoor Recreation Planner

6/4/18
Date


Jami Ludwig: Assistant Field Manager

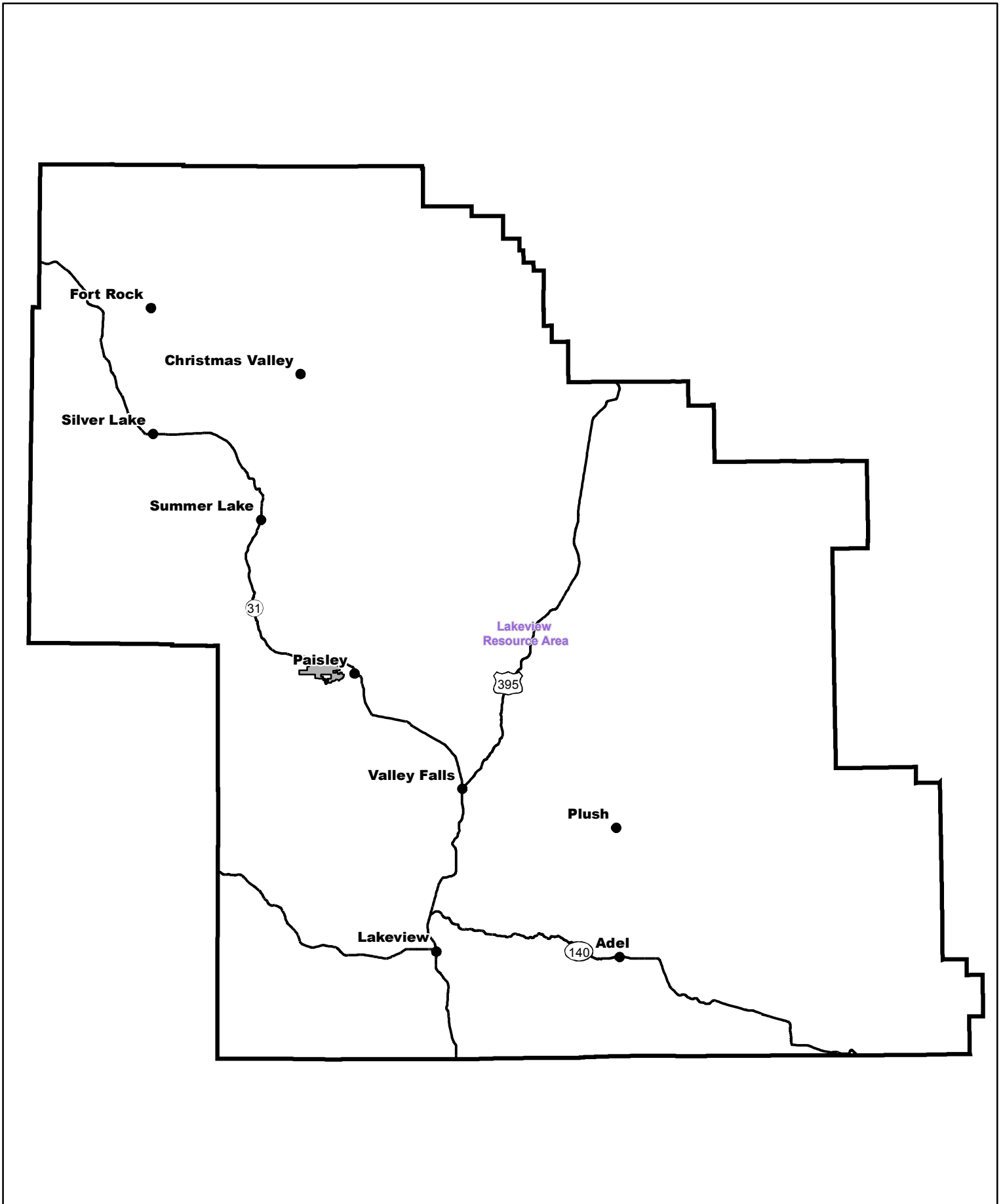
6/4/18
Date

Approved by:

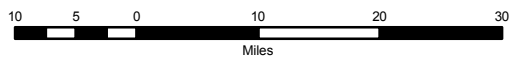

J. Todd Forbes
Field Manager

6/4/18
Date

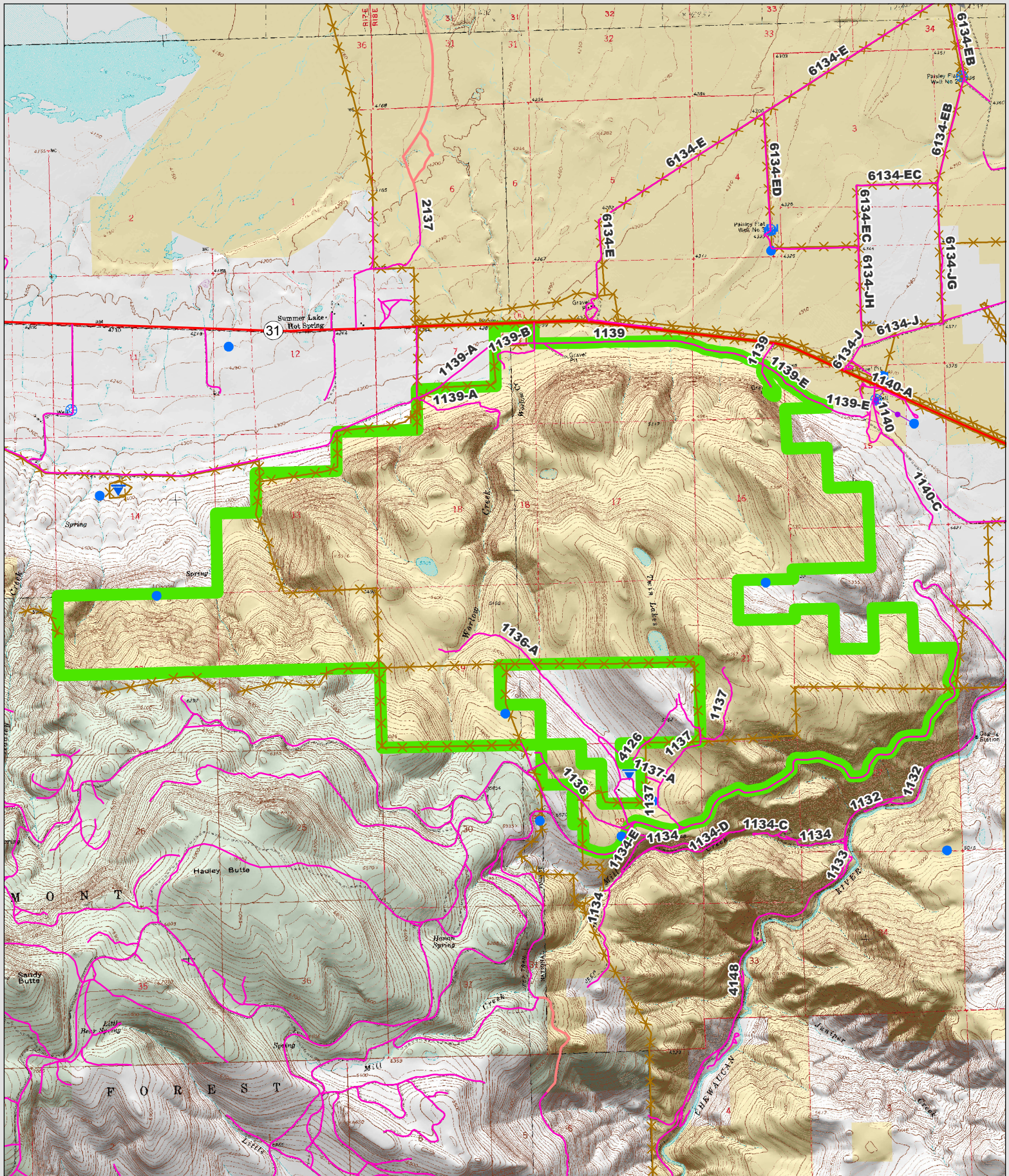
This form documents information that constitutes an inventory finding on wilderness characteristics. It does not represent a formal land use allocation or a final agency decision subject to administrative remedies under 43 CFR parts either 4 or 1610.5-2.



Wilderness Character Inventory Unit



No warranty is made by the Bureau of Land Management as to the accuracy, reliability, or completeness of these data for individual or aggregate use with other data. Original data were compiled from various sources. This information may not meet National Map Accuracy Standards. This product was developed through digital means and may be updated without notification.



Wilderness Character Inventory Unit

Ownership

- Bureau of Land Management
- U.S. Forest Service
- Private/Unknown

Roads/Trails

- Motorized Routes
- Highways
- Reclaiming Routes
- Interim Routes

Pipelines and Ditches

- Ditch
- Water Pipeline
- Guzzler
- Fences

Water Developments

- Dam
- Reservoir
- Spring Development
- Trough
- Water Diversion

Water Features

- Water Tank
- Waterhole
- Well - Water

1 0.5 0 1 Miles

North arrow pointing up.

No warranty is made by the Bureau of Land Management as to the accuracy, reliability, or completeness of these data for individual or aggregate use with other data. Original data were compiled from various sources. This information may not meet National Map Accuracy Standards. This product was developed through digital means and may be updated without notification.