

Year: 2018

Inventory Unit Number/Name: OR-015-117A/ Monument Flat

**FORM 1**

**DOCUMENTATION OF BLM WILDERNESS INVENTORY  
FINDINGS ON RECORD**

**1. Is there existing BLM wilderness inventory information on all or part of this area?**

No \_\_\_\_\_ Yes   X   (if more than one unit is within the area, list the names/numbers of those units):

a) **Inventory Source:** Wilderness Inventory – Final Intensive Inventory Decisions; USDI BLM - Oregon and Washington, November 1980.

b) **Inventory Unit Name(s)/Number(s):** 1-117A/ Monument Flat

c) **Map Name(s)/Number(s):** Intensive Wilderness Inventory - Final Decisions; USDI BLM - Oregon, November 1980.

d) **BLM District(s)/Field Office(s):** Lakeview District, Lakeview Resource Area.

**2. BLM Inventory Findings on Record:**

Existing inventory information regarding wilderness characteristics (if more than one BLM inventory unit is associated with the area, list each unit and answer each question individually for each inventory unit):

Unit #	Size (historic acres)	Natural Condition? Y/N	Outstanding Solitude? Y/N	Outstanding Primitive & Unconfined Recreation? Y/N	Supplemental Values? Y/N
1-117A	16,240	N	N	N	Unknown
1-117A*	17,725	Y	N	N	N/A

\* The inventory of this unit was updated in 2009. However, due to a State Office-sponsored Wilderness Inventory Consistency Evaluation and subsequent guidance, the 2009 inventory analysis and findings are being replaced by this current 2018 inventory review. Documentation of the 2009 inventory can be found in the wilderness inventory project record.

*Summarize any known primary reasons for prior inventory findings listed in this table:*

The majority of the unit was described as a high sage flat with minor depressions and drainages. The vegetation was sage and grasses with scattered juniper trees on the east and at several spring locations in the unit. The 500-KV powerline defining the west boundary was found to have substantial impact on naturalness in that area. The unit contained fence line, 14 miles of “ways,” and 9 reservoirs, which cumulatively detracted considerably from the natural appearance of the area. The broad expanse of sage flats offered minimal solitude. The unit was not found to provide outstanding opportunities to avoid the sights and sounds of others in the unit. The unit was found to offer limited potential for primitive recreation. Scenic views of the Warner Mountains were noted outside of the unit, but lacked scenic views within the area. The unit was found to offer some potential for hunting and wildlife observation. However, overall, the unit was not considered to offer outstanding potential for primitive and unconfined recreation. Some archeological values were expected to be present, but none were documented.

**FORM 2**

**DOCUMENTATION OF CURRENT WILDERNESS INVENTORY  
CONDITIONS**

**Unit Number/Name:** OR-015-117A/ Monument Flat

**(1) Is the unit of sufficient size?** Yes  No

In 2005, the BLM received a citizen proposal from the Oregon Natural Desert Association (ONDA) for the 17,417-acre Fish Creek Rim proposed Wilderness Study Area (WSA) Addition. ONDA included in their information a narrative report, maps, photos, photo and route logs, and GIS data. All of these materials were considered during the BLM’s wilderness inventory update for this area. The photos submitted by ONDA were taken in 2004. They identified this large area as having no interior routes, which met the BLM wilderness inventory definition of a road. In addition, ONDA concluded that route 1117a (BLM Road 7142-00) no longer meets the BLM wilderness inventory definition of a road, as it has not been maintained by mechanical means to ensure regular and continuous use. Therefore, ONDA concluded that their Fish Creek Rim proposed WSA Additions is contiguous with the Fish Creek Rim WSA resulting in a combined 36,795-acre unit (see p. 79-86 of ONDA, 2005). All of these materials were considered during the BLM’s wilderness inventory process for this area.

Between 2006 and 2016, BLM staff conducted field inventory in the area as part of a process to update its road and wilderness inventories and to gather additional information to supplement ONDA’s wilderness information. This fieldwork included photo documentation of the boundary and interior routes and a re-evaluation of wilderness characteristics for this area. Using both ONDA and BLM photos, field

logs, and staff field knowledge, the BLM completed route analysis within the area in 2017.

The BLM determined that several of the routes ONDA identified as “ways” are boundary roads. The Fish Creek Rim proposed Wilderness Study Area (WSA) Addition is not one large roadless unit, but is comprised of several smaller inventory units, which must be evaluated individually. Furthermore, the BLM concluded that BLM Roads 7124-00 and 7105-00 meet the BLM wilderness inventory definition of a road, thus, the Monument Flat unit was evaluated solely on its own merit separate from, rather than contiguous with the existing Fish Creek Rim WSA.

The BLM determined that the inventory unit is bounded by BLM Roads 7105-00 on the east; 7142-00 and associated right-of-way on the south; a Bonneville Power Association (BPA) power line right-of-way (150 feet from centerline) to the west; 8125-00, 8125-B0, BLM interim numbered roads 8125-E0 and 8135-H0, and private lands on the north. Inside this boundary, the unit contains 6 private inholdings (522 acres) in the northern portion of the unit. Due to changes in boundary determinations (private lands, road rights-of-ways buffers), approximately 528 acres were removed from the unit, while approximately 2,243 acres were added to the unit (due to corrections to section corner offsets and power line buffers).

Thus, based on these boundary and road determinations, the BLM found the Monument Flat inventory unit to exceed the minimum size criteria at approximately 20,076 acres of BLM-administered lands.

Additional background on the process that the BLM followed during this evaluation is contained in the document, *Wilderness Inventory Maintenance Process for the Lakeview Resource Area, BLM* and in the *Route Analysis Forms*. Both documents can be found in the wilderness inventory file.

## **DESCRIPTION OF CURRENT CONDITIONS:**

The inventory unit is located approximately 4 miles northwest of Adel, Oregon. The unit is approximately 9 miles long by 5.5 miles wide with 522 acres of private inholdings. The unit is relatively flat, sloping gently uphill to the east, with rolling terrain (Irish Hill) and minor topographical depressions (Crump Reservoir Ballew Lake) and drainages. The unit contains numerous springs with small riparian areas throughout the area. The vegetative cover is western juniper, mountain mahogany, sagebrush, and grasses. Overall, the unit has a high juniper component with several high-density stands (aprx. 2,500 acres) in central and eastern third of the unit. The western third of the unit is comprised of numerous large, moderate-density juniper stands (aprx. 5,500 acres). While the north central and southern central portions of the unit are more open with low-density stands and scattered juniper. Additionally, 1,471 acres along the eastern boundary of the unit are within the High Lakes Area of Critical Environmental Concern (ACEC), which was established in 2003 to protect unique botanical, cultural, and wildlife values.

**(2) Is the unit in a natural condition?** Yes  No  N/A

In 1980, the original inventory found contained fence line, 14 miles of “ways,” and 9 reservoirs, which cumulatively detracted considerably from the natural appearance of the area. Additionally, the 500-KV power line, defining the west boundary, was found to have substantial impact on naturalness in that area.

ONDA’s 2005 inventory concluded that their Fish Creek Rim proposed (WSA) Addition appears in a natural condition, primarily affected by the forces of nature. The 500-KV power line is unnoticeable once you get more than 0.5 miles away due to the contour of the land and screening from trees. In addition, ONDA noted that “ways” are becoming less noticeable and reservoirs are either on private land or along the western boundary, and thus have less of an impact on the area as a whole. However, as noted above, the BLM found that this proposed WSA is not one large roadless unit, but is comprised of several smaller inventory units, within which the natural character must be evaluated individually

The unit currently contains the following man-made developments/disturbances: 959 acrs of chemical treatments, 336 acres of wildfire, 32 acres of seeding, 20 miles of motorized routes, 2 miles of reclaiming routes, 14.5 miles of fence lines, 641 feet of pipelines, 11 waterholes, 10 reservoirs, 7 developed springs, 4 troughs, and 1 MET (meteorological measurement) towers. Note: MET towers are considered a temporary impact as they are scheduled for removal and rehabilitation in 2018.

Presently, almost 4 decades after the original inventory, these developments are weathered and grown over with western juniper, herbaceous grasses, and sagebrush. As a result, developments now fade into the background of the unit and are largely only noticeable at a close distance (1/4<sup>th</sup> mile or less) and are thus substantially unnoticeable from further distances. The topography and vegetation of the area also plays a large role in screening disturbances and man-made developments. In addition, the majority of disturbances are located near the perimeter of the unit and, as such, have a small area of influence. Additionally, areas that were seeded or allowed to revegetate naturally, have been invaded by rabbit bush, sagebrush, and grasses and have returned to a natural, post fire, appearing condition.

Based on a review of all the available information including photos, staff knowledge, and field review, the BLM concluded that the unit appears in a natural condition where the imprints of man are substantially unnoticeable.

**(3) Does the unit (or the remainder of the unit if a portion has been excluded due to unnaturalness and the remainder is of sufficient size) have outstanding opportunities for solitude?** Yes  No  N/A

In 1980, the unit was found to be a broad expanse of sage flats and thus offered minimal solitude. Overall, the unit was found to lack outstanding opportunities to avoid the sights and sounds of others in the unit.

In 2005, ONDA's inventory identified the larger Fish Creek Rim proposed WSA Addition as having outstanding opportunities for solitude based on their finding that the unit is contiguous with BLM's existing Fish Creek Rim WSA. As such, the combination of rimrock found along the border of Fish Creek Rim WSA and juniper found throughout their WSA Addition, together, offer outstanding opportunities for solitude, where the sights and sounds of others could easily be avoided. However, the BLM did not find this proposal to be one large roadless area, but is comprised of a number of smaller inventory units that must be evaluated individually.

The BLM determined that there are several outstanding opportunities for solitude across the unit due largely to vegetative screening. Vegetatively, once marginal western juniper stands have greatly expanded in acreage, height, width, and density. Sufficient pockets of juniper for screening purposes can now be found across the unit. The central and eastern third of the unit contains a high juniper component with several high-density stands (aprx. 2,500 acres). The western third of the unit is comprised of numerous large, moderate-density juniper stands (aprx. 5,500 acres). While the north central and southern central portions of the unit are more open with low-density stands and scattered juniper. Due to the above-described compartmentalized vegetative conditions within the unit, one would easily be able to avoid the sights and sounds of others within the unit.

Thus, for the reasons specified above and based on a review of all the available information including (BLM and citizen provided) photos, staff knowledge, and field review, the BLM concluded the Monument Flat inventory unit possesses outstanding opportunities for solitude.

**(4) Does the unit (or the remainder of the unit if a portion has been excluded due to unnaturalness and the remainder is of sufficient size) have outstanding opportunities for primitive and unconfined recreation?** Yes  No  N/A

In 1980, the unit was found to offer limited potential for primitive recreation. Scenic views of the Warner Mountains were noted outside of the unit, but lacked scenic views within the area. The unit was found to offer some potential for hunting and wildlife observation. However, overall, the unit was not considered to offer outstanding potential for primitive and unconfined recreation.

In 2005, ONDA's inventory identified the larger Fish Creek Rim proposed WSA Addition as having outstanding opportunities for primitive and unconfined recreation including hunting, wildlife observation, hiking, exploring, camping, backpacking, horseback riding, scenery, and photography. Additionally, ONDA concluded that their WSA Addition is contiguous with BLM's existing Fish Creek Rim WSA and, as such, combined values enhance opportunities of both units to meet the "outstanding" criteria for primitive and unconfined recreation. However, the BLM did not find this proposal to be one large roadless area, but is comprised of a number of smaller inventory units that must be evaluated individually.

The BLM finds that all activities listed above, in combination with the diversity of trapping and stargazing, are exceptional. The BLM determined that the numerous potential routes for hiking/horseback riding through moderately to high-density western juniper stands from spring to spring represent a unique opportunity for primitive and unconfined recreation.

**(5) Does the unit have supplemental values?** Yes  No  N/A

The BLM found the unit to possess archaeological and geological values as well as the presence of various bat, elk, pronghorn antelope, mule deer, California bighorn sheep, and sage-grouse habitat.

**Summary of Findings and Conclusion**

**Unit Number and Name:** OR-015-117A/ Monument Flat

**Summary Results of Analysis:**

- 1. Does the area meet the size requirements?      Yes     No
- 2. Does the area appear to be natural?            Yes     No
- 3. Does the area offer outstanding opportunities for solitude or a primitive and unconfined type of recreation?            Yes     No     NA
- 4. Does the area have supplemental values?      Yes     No     NA

**Conclusion (Check One):**

- The area- or a portion of the area- has wilderness character: *(items 1, 2 and 3 must be checked "yes")*.
- The area does not have wilderness character: *(any of items 1, 2 and 3 are checked "no")*.

**Prepared by (Member Names and Titles):**


  
Chris Bishop: Outdoor Recreation Planner

4/4/18  
Date

  
Jami Ludwig: Assistant Field Manager

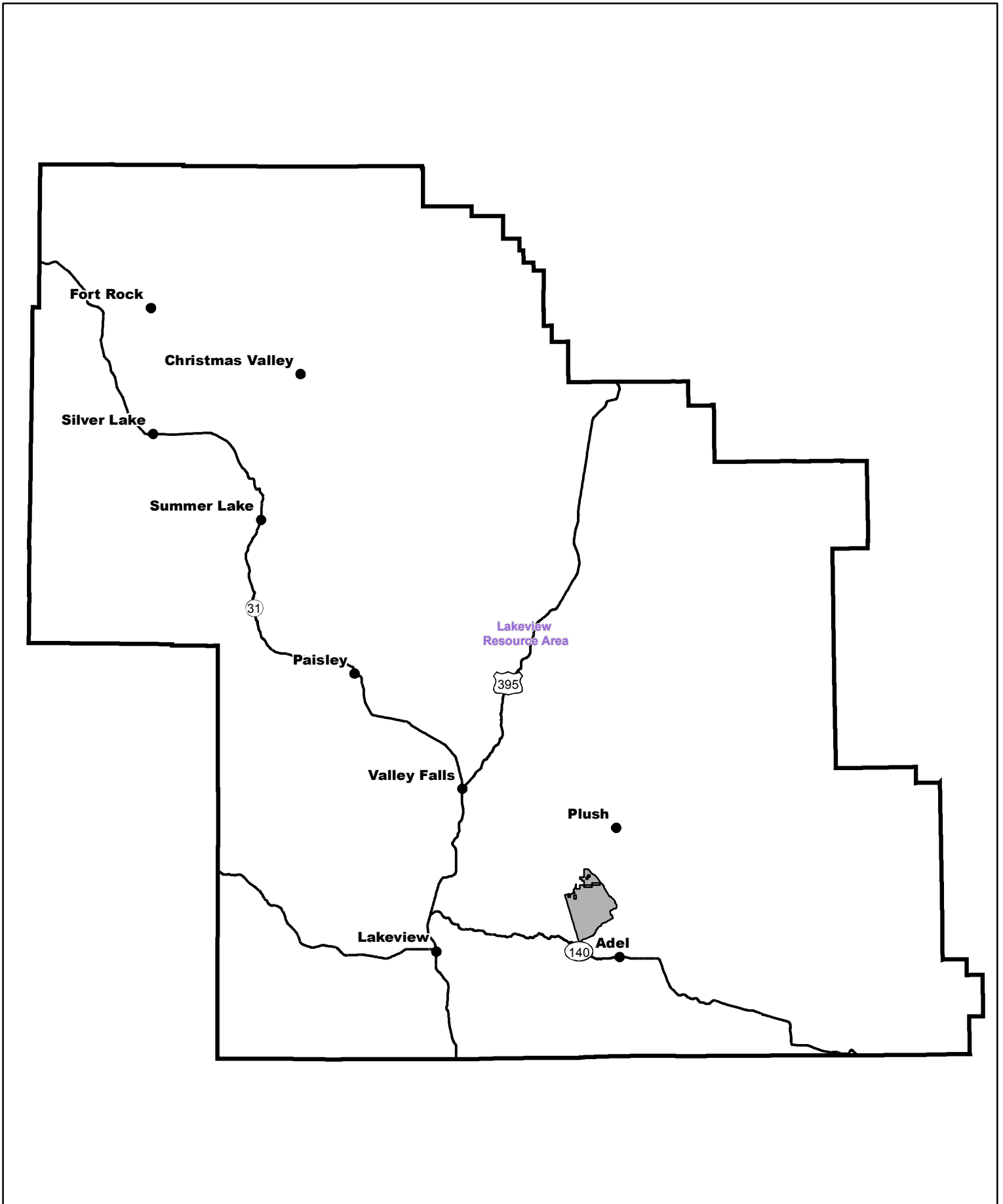
6/4/18  
Date


**Approved by:**

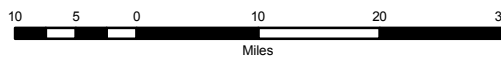
  
J. Todd Forbes  
Field Manager


6/4/18  
Date

*This form documents information that constitutes an inventory finding on wilderness characteristics. It does not represent a formal land use allocation or a final agency decision subject to administrative remedies under 43 CFR parts either 4 or 1610.5-2.*

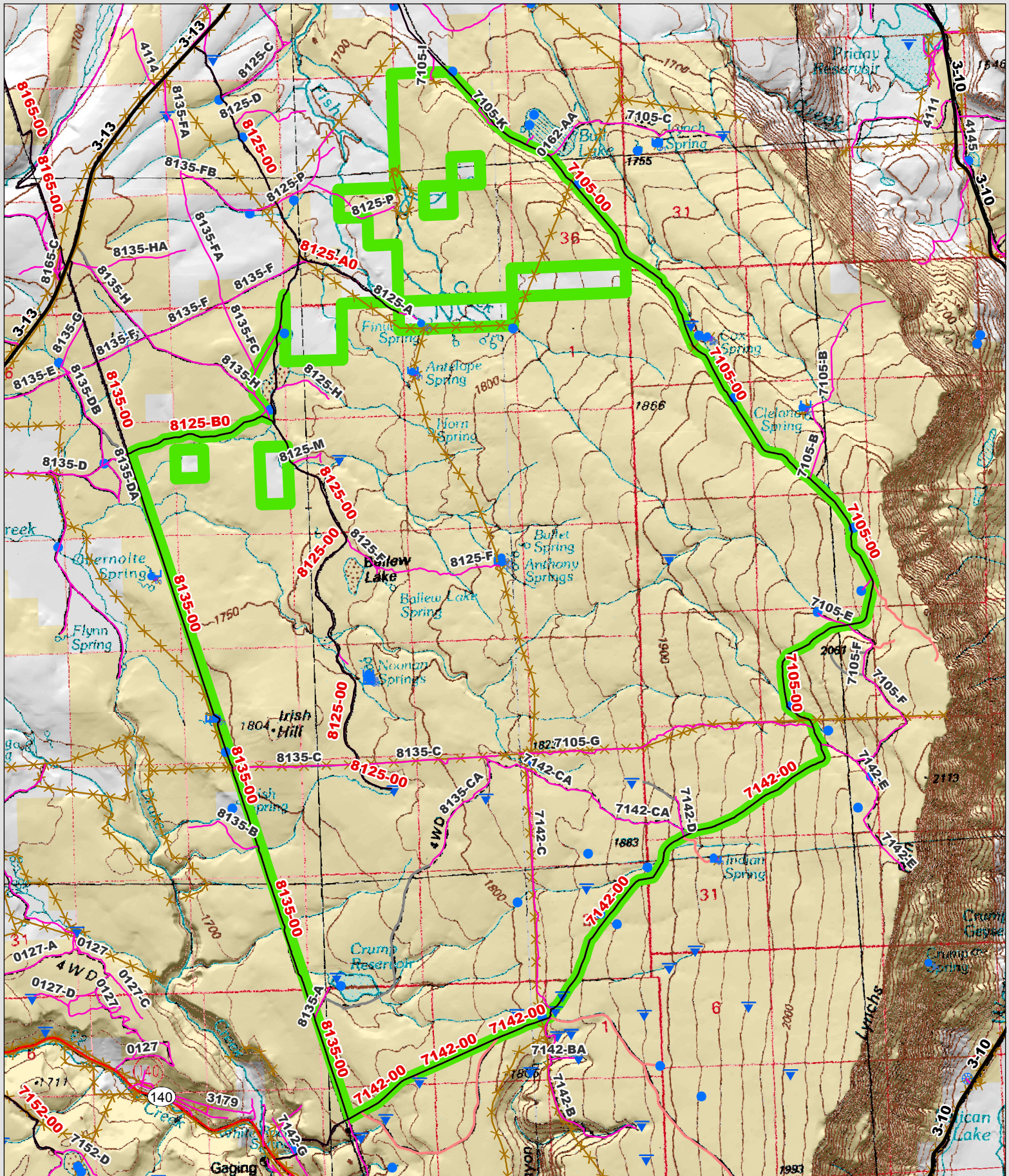


 Wilderness Character Inventory Unit



 No warranty is made by the Bureau of Land Management as to the accuracy, reliability, or completeness of these data for individual or aggregate use with other data. Original data were compiled from various sources. This information may not meet National Map Accuracy Standards. This product was developed through digital means and may be updated without notification.





**Wilderness Character Inventory Unit**

**Ownership**

- Bureau of Land Management
- U.S. Forest Service
- State
- Private/Unknown

**Roads/Trails**

- Motorized Routes
- Highways
- Reclaiming Routes
- Interim Routes

**Pipelines and Ditches**

- Ditch
- Water Pipeline
- Guzzler
- Fences

**Water Developments**

- Dam
- Reservoir
- Spring Development
- Trough
- Water Diversion

- Water Tank
- Waterhole
- Well - Water



No warranty is made by the Bureau of Land Management as to the accuracy, reliability, or completeness of these data for individual or aggregate use with other data. Original data were compiled from various sources. This information may not meet National Map Accuracy Standards. This product was developed through digital means and may be updated without notification.