

Year: 2018

Inventory Unit Number/Name: OR-015-090/ Little Steamboat Point*

FORM 1

**DOCUMENTATION OF BLM WILDERNESS INVENTORY
FINDINGS ON RECORD**

1. Is there existing BLM wilderness inventory information on all or part of this area?

No _____ Yes X (if more than one unit is within the area, list the names/numbers of those units):

a) Inventory Source: Wilderness Inventory – Final Intensive Inventory Decisions; USDI BLM - Oregon and Washington, November 1980.

b) Inventory Unit Number(s)/Name(s): 1-90/ Sunrise Canyon

c) Map Name(s)/Number(s): Intensive Wilderness Inventory - Final Decisions; USDI BLM - Oregon, November 1980.

d) BLM District(s)/Field Office(s): Lakeview District, Lakeview Resource Area.

*Note: Unit name was changed to better reflect values and features found within the unit, and to reduce confusion of similarly named inventory units.

2. BLM Inventory Findings on Record:

Existing inventory information regarding wilderness characteristics (if more than one BLM inventory unit is associated with the area, list each unit and answer each question individually for each inventory unit):

Unit #	Size (historic acres)	Natural Condition? Y/N	Outstanding Solitude? Y/N	Outstanding Primitive & Unconfined Recreation? Y/N	Supplemental Values? Y/N
1-90	4,880	N	N	N	N
1-90*	5,541	N	N/A	N/A	N/A

* The inventory of this unit was updated in 2013. However, due to a State Office-sponsored Wilderness Inventory Consistency Evaluation and subsequent guidance, the 2013 inventory analysis and findings are being replaced by this current 2018 inventory review. Documentation of the 2013 inventory can be found in the wilderness inventory project record.

Summarize any known primary reasons for prior inventory findings listed in this table:

The unit did not meet the size requirement in 1980, possibly due to an acreage calculation error. The unit was physically described as having a ridgeline running the length of the unit from north to south, where it breaks up on a basalt rim. The ridge is approximately 500 feet higher than the valley to the east and west. Vegetation on the unit is sagebrush with a few scattered juniper along the north boundary. The unit contained 1 reservoir, 1.5 miles of “ways,” and a portion of the Kit Canyon seeding, which had a significant impact on the natural condition. The extremely narrow configuration of the unit in relation to its small size and minimal topographic and vegetative cover precludes any opportunity for a person to avoid the sights and sounds of others in the unit. The unit offered only limited opportunities for hunting and exploration of the area on foot and was found to be less than outstanding. No supplemental values were noted.

FORM 2

**DOCUMENTATION OF CURRENT WILDERNESS INVENTORY
CONDITIONS**

Unit Number/Name: OR-015-090/ Little Steamboat Point

(1) Is the unit of sufficient size? Yes No

Between 2008 and 2016, the BLM conducted a field inventory of the area to update its road and wilderness inventory and to gather additional information. This fieldwork included photo documentation of the boundary and interior routes and a re-evaluation of wilderness characteristics for this area. Using both citizen provided and BLM photos, field logs, and staff field knowledge, the BLM completed route analysis and made boundary determinations within the area in 2017.

The BLM determined that the inventory unit is bounded by BLM Road 6165-00 (Corn Lake) and 6155-E0 (Lynch Gulch) on the west; 6155-F0 (Egan Cabin) on the north and east; and 6155-00 (Warner Valley) on the south.

Thus, based on these boundary and road determinations, the BLM found the Little Steamboat Point inventory unit to exceed the minimum size criteria at approximately 5,541 acres of BLM-administered lands.

Additional background on the process that the BLM followed during this evaluation is contained in the document, *Wilderness Inventory Maintenance Process for the Lakeview Resource Area, BLM* and in the *Route Analysis Forms*. Both documents can be found in the wilderness inventory file.

DESCRIPTION OF CURRENT CONDITIONS:

Inventory Unit OR-015-090 is located about 30 miles north of Plush, Oregon. While historic unit 1-90 was estimated to be slightly less than 5,000 (and failed to meet the size criteria) in

1980, the current unit does meet the minimum size criteria at 5,541 acres. The unit is approximately 6.5 miles long by 1.5 miles wide. The unit is dominated by a 500-foot high, figure eight shaped, plateau/rim overlooking Kit Canyon, Lynch Gulch, and the north Warner Valley from Little Steamboat Point. The northern plateau is characterized by a deep, steeply eroded, canyon opening up to the east. The northwestern edge of the unit burned in wildfires in 1985 and 1999. This area was allowed to revegetate naturally. Sagebrush and grasses now dominate the unit. Scattered juniper trees are located along the northern boundary.

(2) Is the unit in a natural condition? Yes No N/A

The 1980 inventory found that historic inventory unit (1-90) was unnatural in character, based on the presence of visible developments (1 reservoir, 1.5 miles of “ways”, and a portion of the Kit Canyon seeding).

The unit currently contains the following man-made developments/disturbances: 250 acres of wildfire, 25 acres of mow strips (fuels break), 6 acres of chemical treatments, and 4 acres of seeding, 6.75 miles of motorized routes, 4.5 miles of fence lines, 1.5 mile of cat lines, 7 reservoirs, 4 waterholes, 1 well (non-functional), and 1 historic wilderness therapy campsite.

Presently, almost 4 decades after the original inventory, these developments are weathered and grown over with herbaceous grasses and sagebrush. As a result, developments now fade into the background of the unit and are largely only noticeable at a close distance (1/4th mile or less) and are thus substantially unnoticeable from further distances. The topography of the area also plays a large role in screening disturbances and man-made developments due to the figure eight shape of the plateau, rims, and canyons. In addition, the majority of the remaining disturbances are located near the perimeter of the unit and, as such, have a small area of influence. Areas that were seeded or allowed to revegetate naturally, have been invaded by rabbit/ sagebrush and have returned to a natural, post fire, appearing condition.

Based on a review of all the available information including photos, staff knowledge, and field review, the BLM concluded that the unit appears in a natural condition where the imprints of man are substantially unnoticeable.

(3) Does the unit (or the remainder of the unit if a portion has been excluded due to unnaturalness and the remainder is of sufficient size) have outstanding opportunities for solitude? Yes No N/A

In 1980, the unit was found to not have outstanding opportunities for solitude due to its size and configuration.

However, the BLM found the Little Steamboat Point inventory unit is topographically diverse with a figure eight shaped 500 foot rim, fallen shelf formations, and eroded canyons. The unit contains the lower reaches of Lynch Gulch Rim, Little Steamboat Point, and portions of lower Lynch Gulch, Hidden Canyon, Warner Valley, and Kit Canyon.

Thus, for the reasons specified above and based on a review of all the available information including (BLM and citizen provided) photos, staff knowledge, and field review, the BLM concluded the Little Steamboat Point inventory unit possesses outstanding opportunities for solitude where one could avoid the sights and sounds of others in the area.

(4) Does the unit (or the remainder of the unit if a portion has been excluded due to unnaturalness and the remainder is of sufficient size) **have outstanding opportunities for primitive and unconfined recreation?** Yes No N/A

In 1980, the unit was found to have only limited opportunities for hunting and exploration of the area on foot and was found to be less than outstanding.

The BLM concluded that all activities listed above in combination with the diversity of camping, backpacking, horseback riding, sightseeing, trapping, photography, and wildlife viewing are exceptional throughout the unit. The BLM noted that opportunities for hiking along the entire figure eight shaped rim and Little Steamboat Point, running over 14 miles along the perimeter of the unit, represents a unique opportunity for primitive and unconfined recreation.

(5) Does the unit have supplemental values? Yes No N/A

The BLM noted the presence of archeological values, as well as, western burrowing owl, golden eagle, various species of bats, sage-grouse, mule deer, and California bighorn sheep habitat.

Summary of Findings and Conclusion

Unit Number and Name: OR-015-090/ Little Steamboat Point

Summary Results of Analysis:

- 1. Does the area meet the size requirements? X Yes No
- 2. Does the area appear to be natural? X Yes No
- 3. Does the area offer outstanding opportunities for solitude or a primitive and unconfined type of recreation? X Yes No NA
- 4. Does the area have supplemental values? X Yes No NA

Conclusion (Check One):

- X The area- or a portion of the area- has wilderness character: *(items 1, 2 and 3 must be checked "yes")*.
- The area does not have wilderness character: *(any of items 1, 2 and 3 are checked "no")*.

Prepared by (Member Names and Titles):

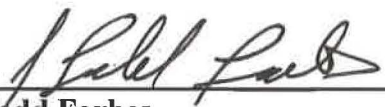

Chris Bishop: Outdoor Recreation Planner

 6/4/18
Date


Jami Ludwig: Assistant Field Manager

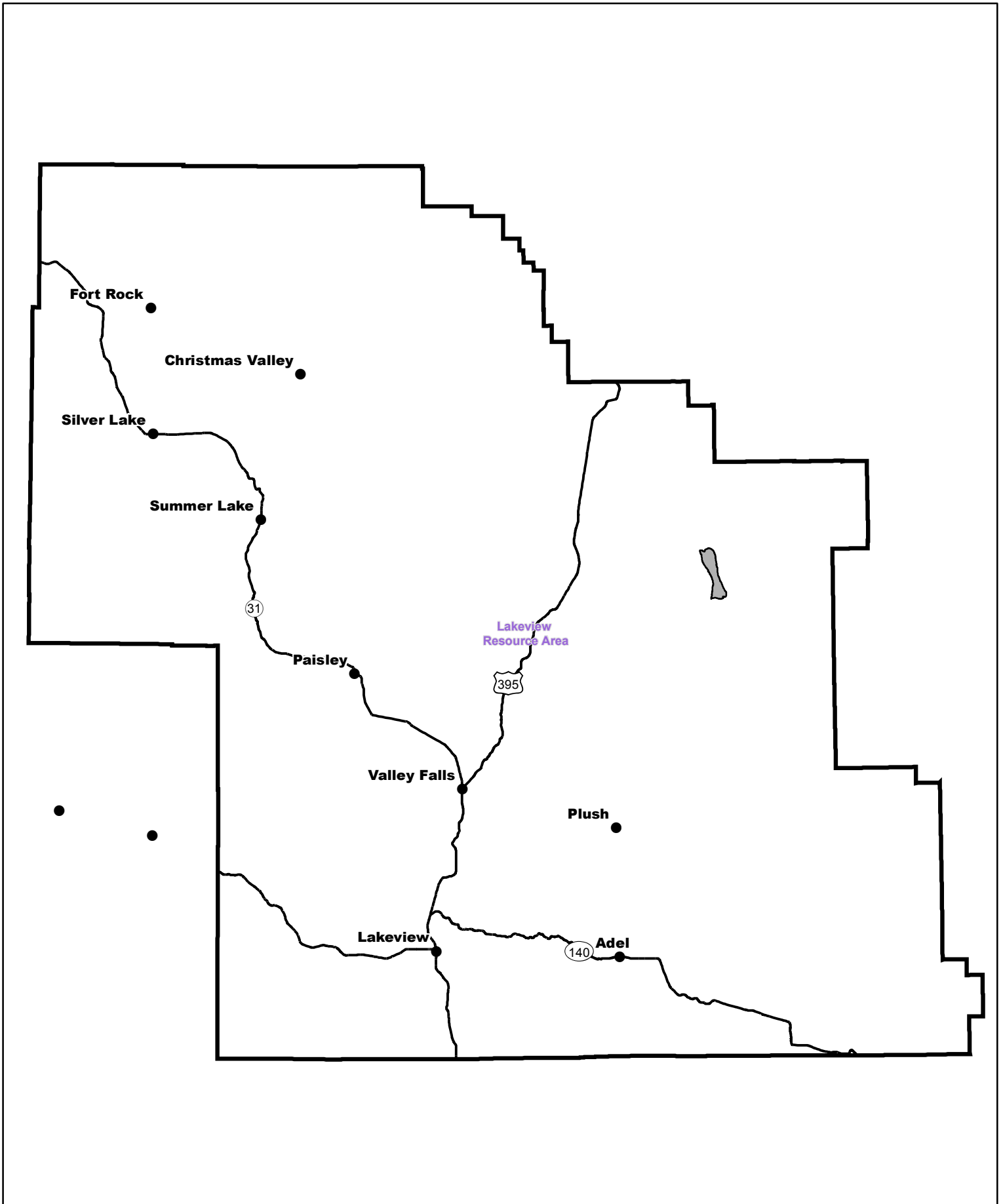
 6/4/18
Date


Approved by:


J. Todd Forbes
Field Manager


 6/4/18
Date

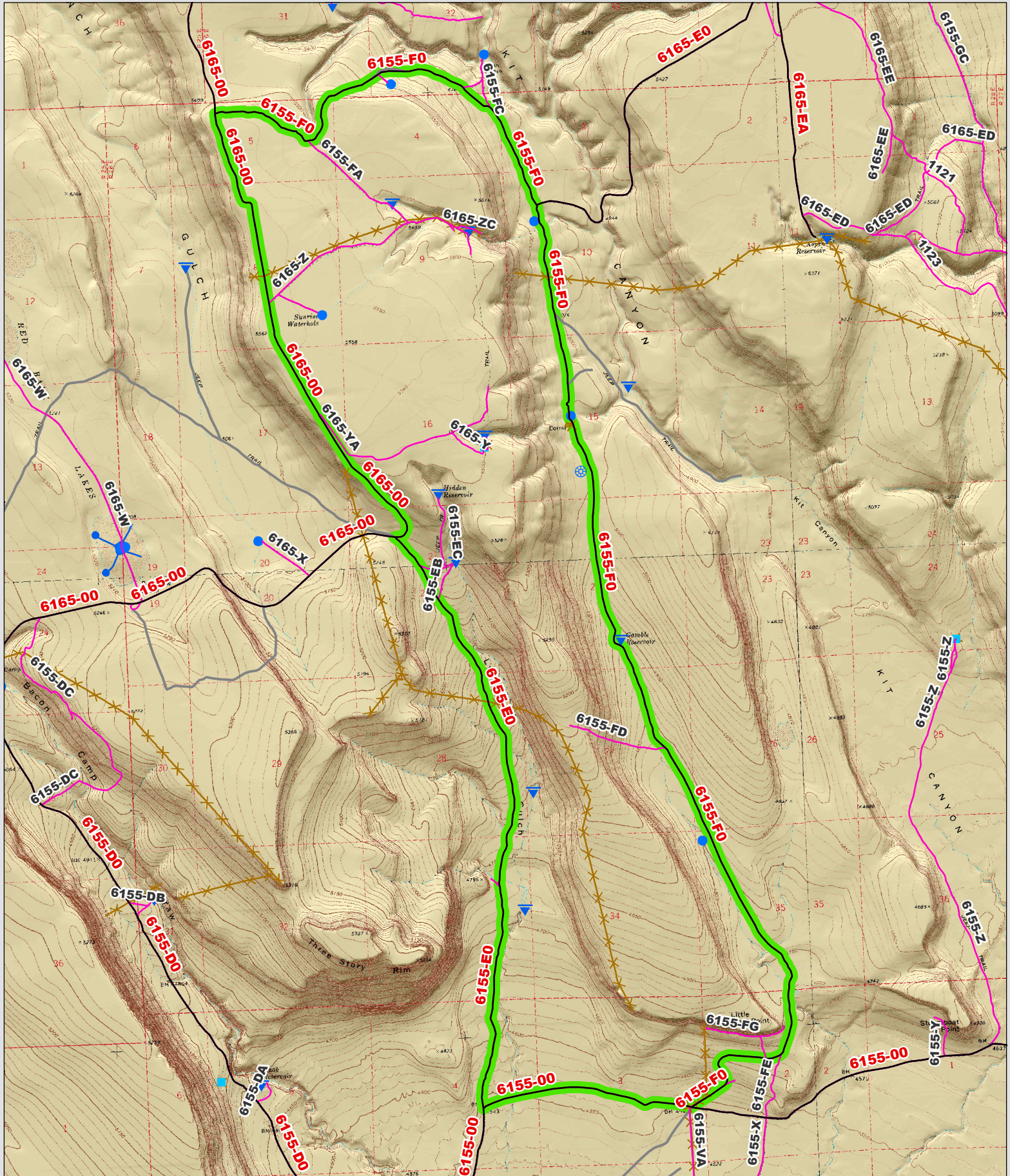
This form documents information that constitutes an inventory finding on wilderness characteristics. It does not represent a formal land use allocation or a final agency decision subject to administrative remedies under 43 CFR parts either 4 or 1610.5-2.



 Wilderness Character Inventory Unit



 No warranty is made by the Bureau of Land Management as to the accuracy, reliability, or completeness of these data for individual or aggregate use with other data. Original data were compiled from various sources. This information may not meet National Map Accuracy Standards. This product was developed through digital means and may be updated without notification.



Wilderness Character Inventory Unit

Ownership

- Bureau of Land Management
- U.S. Forest Service
- Private/Unknown

Roads/Trails

- Motorized Routes
- Highways
- Reclaiming Routes
- Interim Routes

Pipelines and Ditches

- Ditch
- Water Pipeline
- Guzzler
- Fences

Water Developments

- Dam
- Reservoir
- Spring Development
- Trough
- Water Diversion

- Water Tank
- Waterhole
- Well - Water

1 0.5 0 1 Miles

No warranty is made by the Bureau of Land Management as to the accuracy, reliability, or completeness of these data for individual or aggregate use with other data. Original data were compiled from various sources. This information may not meet National Map Accuracy Standards. This product was developed through digital means and may be updated without notification.