

Year: 2020

Inventory Unit Number/Name: OR-015-130/ Little Juniper Mountain*

FORM 1

**DOCUMENTATION OF BLM WILDERNESS INVENTORY
FINDINGS ON RECORD**

1. Is there existing BLM wilderness inventory information on all or part of this area?

No Yes (if more than one unit is within the area, list the names/numbers of those units):

a) **Inventory Source:** Wilderness Inventory – Final Intensive Inventory Decisions; USDI BLM - Oregon and Washington, November 1980.

b) **Inventory Unit Number(s)/ Name(s):** 1-130/ Little Reservoir

c) **Map Name(s)/Number(s):** Intensive Wilderness Inventory - Final Decisions; USDI BLM - Oregon, November 1980.

d) **BLM District(s)/Field Office(s):** Lakeview District, Lakeview Resource Area.

*Note: Unit name was changed to better reflect values and features found within the unit, and to reduce confusion of similarly named inventory units.

2. BLM Inventory Findings on Record:

Existing inventory information regarding wilderness characteristics (if more than one BLM inventory unit is associated with the area, list each unit and answer each question individually for each inventory unit):

Unit #	Size (acres)	Natural Condition? Y/N	Outstanding Solitude? Y/N	Outstanding Primitive & Unconfined Recreation? Y/N	Supplemental Values? Y/N
1-130	24,280	N	N	N	N
1-130*	25,559	N	N/A	N/A	N/A

* The inventory of this unit was updated in 2012. However, due to a State Office-sponsored Wilderness Inventory Consistency Evaluation and subsequent guidance, the 2012 inventory analysis and findings are being replaced by this current 2018 inventory review. Documentation of the 2012 inventory can be found in the wilderness inventory project record.

Summarize any known primary reasons for prior inventory findings listed in this table:

In 1980, this unit was described as a broad, sagebrush flat with a slight rise towards Little Juniper Mountain in the north. On the east side of the unit there was a north-south fault scarp and a basin along Jack Creek which formed a broad bottomed valley approximately 5 miles in length and a half mile wide. Vegetation was dominated by sagebrush with scattered western juniper located along Jack Creek. The unit contained 2 large lakebeds used as reservoirs. The unit dropped off sharply to Greaser Basin. The unit contained 18 miles of "ways," the spread of which constituted a significant impact of man's works. There were 7 reservoirs in the unit, which cumulatively represent substantial evidence of the works of man, due to their sheer size and distribution in the unit. Overall, the unit did not appear to be substantially free from the works of man. As a result of the flat topography and low-growing vegetative cover, the unit did not offer an outstanding opportunity for solitude. The unit offered some opportunities for hunting, however, activities such as backpacking or hiking would be severely confined. Overall, the unit was not found to offer an outstanding opportunity for solitude. The unit offered some potential for the presence of archaeological values, but none were specifically identified at the time.

FORM 2

**DOCUMENTATION OF CURRENT WILDERNESS INVENTORY
CONDITIONS**

Unit Number/Name: OR-015-130/ Little Juniper Mountain

(1) Is the unit of sufficient size? Yes No

In 2005, the BLM received a citizen proposal from the Oregon Natural Desert Association (ONDA) for the 424,570-acre Hart Mountain Proposed Wilderness Study Area (WSA). ONDA included in their information a narrative report, maps, photos, photo and route logs, and GIS data. All of these materials were considered during the BLM's wilderness inventory update for this area. The photos submitted by ONDA were taken in 2004. They identified this large area as having no interior routes, which met the BLM wilderness inventory definition of a road (see Map, p. 96 of ONDA 2005). In 2018, the BLM received an additional citizen inventory from the O'Keeffe ranch. All these materials were considered during the BLM's wilderness inventory process for this area.

Between 2008 and 2016, BLM staff conducted field inventory in the area as part of a process to update its road and wilderness inventories and to gather additional information to supplement ONDA's wilderness information. This fieldwork included photo documentation of the boundary and interior routes and a re-evaluation of wilderness characteristics for this area. Using the submitted citizen inventories mentioned above and BLM photos, field logs, and staff field knowledge, the BLM completed route analysis within the area in 2017 and revised this information in 2019 based on new citizen submitted information submitted.

The BLM determined that several of the routes ONDA identified as “ways” are boundary roads. Hart Mountain proposed WSA is not one large roadless unit, but is comprised of several smaller inventory units, which must be evaluated individually. BLM also reviewed the O’Keeffe submission, but did not make any route changes based on this information.

The BLM determined that the inventory unit is bounded by BLM Roads 6106-00, 7136-00, 7136-A0, interim road 6106-AB, and private lands on the east; 7136-B0 on the north; 6122-00, 6162-B0, and private lands on the west; and the U.S. Highway 140 right-of-way and private lands on the south. Additionally, due to changes in boundary and road determinations (right-of-ways widths, a cherry stemmed route to Little Reservoir, and removing 2 private inholdings) 128 acres were removed from the inventory unit.

Thus, based on these boundary and road determinations, the BLM found the Little Juniper Mountain inventory unit to exceed the minimum size criteria at approximately 23,443 acres of BLM-administered lands.

Additional background on the process that the BLM followed during this evaluation is contained in the document, *Wilderness Inventory Maintenance Process for the Lakeview Resource Area, BLM* and in the *Route Analysis Forms*. Both documents can be found in the wilderness inventory file.

DESCRIPTION OF CURRENT CONDITIONS:

The unit is located approximately 13 miles east of the town of Adel, Oregon. The inventory unit is approximately 8 miles long by 4.5 miles wide and contains 2 private parcels (202 acres). Topography is comprised of Little Juniper Mountain (300 ft. tall) in the northern portion of the unit; Greaser Ridge (4 miles long and 400 ft. tall) and Greaser Basin to the southwest; an unnamed rim (5 miles long and 250-300 ft. high) above Jack Creek to the southeast; several 20-80 feet deep lakebed depressions (Little Reservoir, MC Reservoir, and Round Lake), two shallow rims running north to south (60 ft. high), and rolling hills in the central portion of the unit. Vegetatively, the inventory unit is largely covered with sagebrush, grass, and scattered western juniper. However, there are a few stands of dense western juniper (approximately 500 acres) near Little Juniper Mountain, a rim to the east of round lake, 2 stands in the central portion of the unit, and 4 stands within the Jack Creek drainage. Additionally, approximately half (14,660 acres) of this unit is within the High Lakes Area of Critical Environmental Concern (ACEC), which was established in 2003 to protect unique cultural values.

(2) Is the unit in a natural condition? Yes X No N/A

In 1980, the unit contained 2 large lakebeds with pits, 18 miles of “ways,” and 7 reservoirs, which cumulatively represented substantial evidence of the works of man, due to their sheer size and distribution in the unit. Overall, the unit did not appear to be substantially free from the works of man.

ONDA's 2005 inventory concluded that their Hart Mountain Proposed Wilderness Study Area appears in a natural condition, primarily affected by the forces of nature. "Many of the manmade developments [are]...deteriorated making them appear more natural in the landscape, they do not have a cumulative impact to the area (p. 92-93 of ONDA 2005)." However, as noted above, the BLM found that this proposed WSA is not one large roadless unit, but is comprised of several smaller inventory units, within which the natural character must be evaluated individually.

The O'Keeffe Ranch noted that several of the manmade structures in the area were visible from long distances. The BLM reviewed all the information submitted but did not make any changes to this unit.

The unit currently contains the following man-made developments/disturbances: 41 acres of chemical treatments, 21.5 miles of motorized routes, 6 miles of closed routes, 3 miles of reclaiming routes, 14.5 miles of fence line, 11 reservoirs, 10 waterholes, and 1 dam.

Presently, almost 4 decades after the original inventory, these developments are weathered and grown over with herbaceous grasses and sagebrush. As a result, developments now fade into the background of the unit and are largely only noticeable at a close distance (1/4th mile or less) and are thus substantially unnoticeable from further distances. The topography and vegetation of the area also plays a large role in screening disturbances and man-made developments. In addition, the majority of disturbances are located near the perimeter of the unit and, as such, have a small area of influence.

Based on a review of all the available information including photos, staff knowledge, and field review, the BLM concluded that the unit appears in a natural condition where the imprints of man are substantially unnoticeable.

(3) Does the unit (or the remainder of the unit if a portion has been excluded due to unnaturalness and the remainder is of sufficient size) have outstanding opportunities for solitude? Yes No N/A

In 1980, the unit was found to lack and outstanding opportunity for solitude due to flat topography and low-growing vegetative cover.

In 2005, ONDA's inventory identified the larger 424,570-acre Hart Mountain Proposed WSA as having outstanding opportunities for solitude based on sheer size as their proposal is contiguous with other inventory units and therefore no longer stands alone. As such, the sights and sounds of others could easily be avoided. ONDA noted that there are still flat and exposed slopes, but they do not dominate the entirety of the proposed WSA and one could easily find areas that have topographic screening. However, the BLM did not find this proposal to be one large roadless area, but is comprised of a number of smaller inventory units that must be evaluated individually.

The BLM determined that there are several outstanding opportunities for solitude across the area due to topographic and vegetative screening. Topography is comprised of Little Juniper

Mountain (300 ft. tall) in the northern portion of the unit; Greaser Ridge (4 miles long and 400 ft. tall) and Greaser Basin to the southwest; an unnamed rim (5 miles long and 250-300 ft. high) above Jack Creek to the southeast; several 20-80 feet deep lakebed depressions (Little Reservoir, MC Reservoir, and Round Lake), two shallow rims running north to south (60 ft. high), and rolling hills in the central portion of the unit. Vegetatively, once marginal western juniper stands have greatly expanded in acreage (500), height, width, and density. Sufficient pockets of juniper for screening purposes can now be found near Little Juniper Mountain, a rim to the east of round lake, 2 stands in the central portion of the unit, and 4 stands within the Jack Creek drainage. Due to the above-described compartmentalized topography and vegetative conditions within the unit, one would easily be able to avoid the sights and sounds of others within the unit.

Thus, for the reasons specified above and based on a review of all the available information including (BLM and citizen provided) photos, staff knowledge, and field review, the BLM concluded the Little Juniper Mountain inventory unit possesses outstanding opportunities for solitude.

(4) Does the unit (or the remainder of the unit if a portion has been excluded due to unnaturalness and the remainder is of sufficient size) **have outstanding opportunities for primitive and unconfined recreation?** Yes No N/A

In 1980, the unit was found to possess some opportunities for hunting, however, it was believed that activities such as backpacking and hiking would be severely confined. Overall, the unit was not found to offer an outstanding opportunity for solitude.

In 2005, ONDA's inventory identified the larger 424,570-acre Hart Mountain Proposed WSA as having outstanding opportunities for primitive and unconfined recreation based on sheer size as their proposal is contiguous with other inventory units and therefore no longer stands alone. ONDA considered potential opportunities for hunting, hiking, backpacking, horseback riding, wildlife observation, and photography as outstanding (p. 93 of ONDA 2005). However, the BLM did not find this proposal to be one large roadless area, but is comprised of a number of smaller inventory units that must be evaluated individually.

The BLM finds that all activities listed above in combination with the diversity of camping, exploration, sightseeing, and stargazing are exceptional. The BLM determined that opportunities for viewing petroglyphs (some of the highest concentrations in the world) along lakebed rims throughout the unit represent a unique opportunity for primitive and unconfined recreation.

(5) Does the unit have supplemental values? Yes No N/A

The BLM found the unit to possess archaeological and geological values as well as the presence golden eagle, pigmy rabbit, pronghorn antelope, mule deer, and sage-grouse habitat.

Summary of Findings and Conclusion

Unit Number and Name: OR-015-130/ Little Juniper Mountain

Summary Results of Analysis:

- 1. Does the area meet the size requirements? X Yes No
- 2. Does the area appear to be natural? X Yes No
- 3. Does the area offer outstanding opportunities for solitude or a primitive and unconfined type of recreation? X Yes No NA
- 4. Does the area have supplemental values? X Yes No NA

Conclusion (Check One):


- X The area- or a portion of the area- has wilderness character:
(items 1, 2 and 3 must be checked "yes").
- The area does not have wilderness character: *(any of items 1, 2 and 3 are checked "no").*

Prepared by (Member Names and Titles):


Shane Garside: Outdoor Recreation Planner

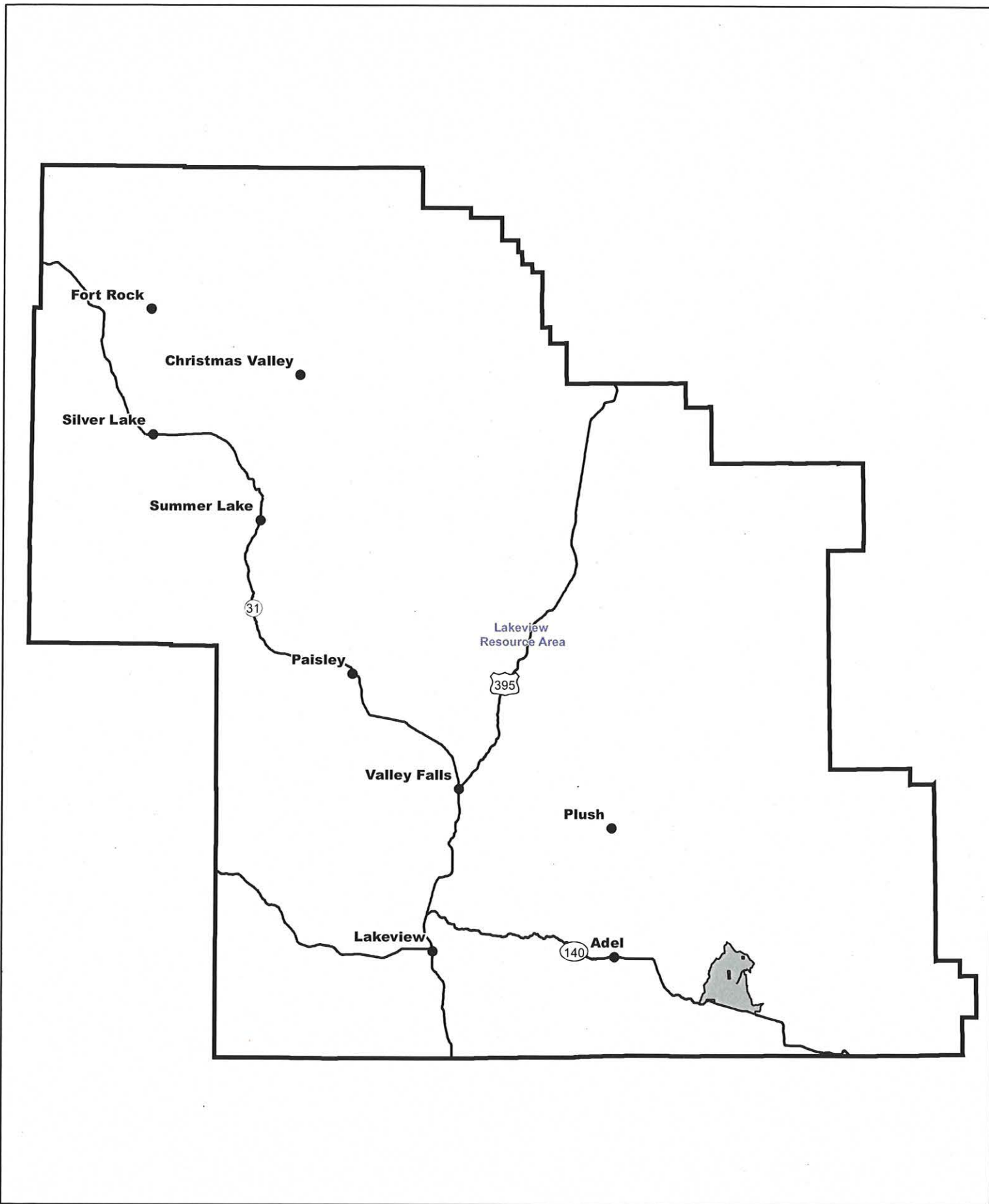
2/14/2020
Date

Approved by:

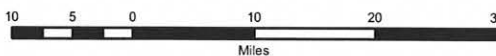

Jami Ludwig
Field Manager


2/14/20
Date

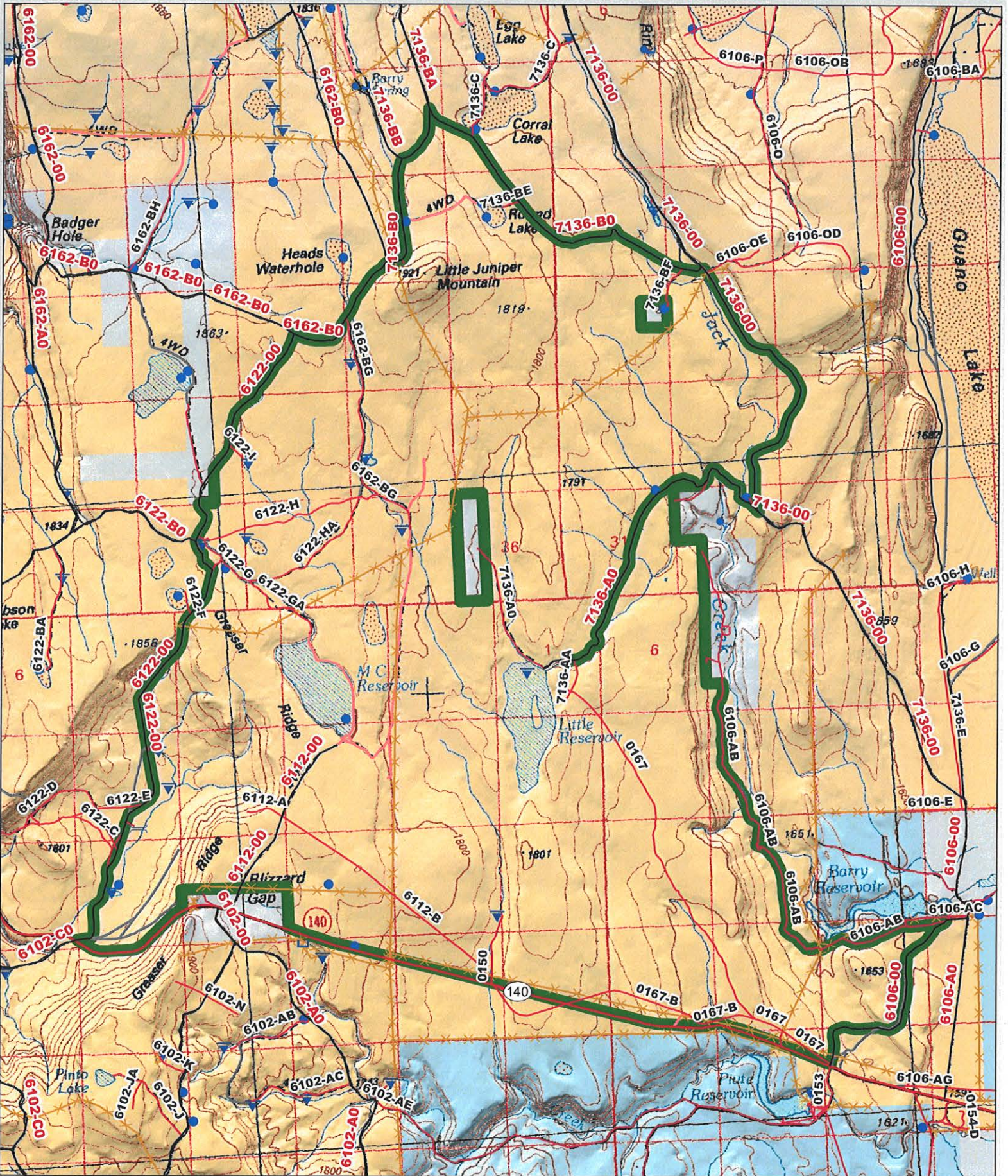
This form documents information that constitutes an inventory finding on wilderness characteristics. It does not represent a formal land use allocation or a final agency decision subject to administrative remedies under 43 CFR parts either 4 or 1610.5-2.



 Wilderness Character Inventory Unit



 No warranty is made by the Bureau of Land Management as to the accuracy, reliability, or completeness of these data for individual or aggregate use with other data. Original data were compiled from various sources. This information may not meet National Map Accuracy Standards. This product was developed through digital means and may be updated without notification.



<p>Ownership</p> <ul style="list-style-type: none"> Bureau of Land Management U.S. Forest Service State Private/Unknown 		<p>Roads/Trails</p> <ul style="list-style-type: none"> Motorized Routes Highways Reclaiming Routes Interim Routes 		<p>Pipelines and Ditches</p> <ul style="list-style-type: none"> Ditch Water Pipeline Guzzler Fences 		<p>Water Developments</p> <ul style="list-style-type: none"> Dam Reservoir Spring Development Trough Water Diversion 		<p>Water Features</p> <ul style="list-style-type: none"> Water Tank Waterhole Well - Water 		<p>1.5 0.75 0 1.5 Miles</p>	
		<p>Legend</p> <ul style="list-style-type: none"> Wilderness Character Inventory Unit 				<p><small>No warranty is made by the Bureau of Land Management as to the accuracy, reliability, or completeness of these data for individual or aggregate use with other data. Original data were compiled from various sources. This information may not meet National Map Accuracy Standards. This product was developed through digital means and may be updated without notification.</small></p>					