

Year: 2018

Inventory Unit Number/Name: OR-015-083A/ Jug Mountain

**FORM 1**

**DOCUMENTATION OF BLM WILDERNESS INVENTORY FINDINGS ON RECORD**

**1. Is there existing BLM wilderness inventory information on all or part of this area?**

No \_\_\_\_\_ Yes  X  (if more than one unit is within the area, list the names/numbers of those units):

a) **Inventory Source:** Wilderness – Proposed Initial Inventory: Roadless Areas and Islands Which Clearly Do Not Have Wilderness Characteristics; USDI BLM - Oregon and Washington, April 1979.

b) **Inventory Unit Number(s)/Name(s):** 1-83

c) **Map Name(s)/Number(s):** Final Decision - Initial Wilderness Inventory: Public Lands and Islands Which Do Not Have Wilderness Characteristics and Units To Be Intensively Inventoried; USDI BLM - Oregon, August 1979.

d) **BLM District(s)/Field Office(s):** Lakeview District, Lakeview Resource Area.

**2. BLM Inventory Findings on Record:**

Existing inventory information regarding wilderness characteristics (if more than one BLM inventory unit is associated with the area, list each unit and answer each question individually for each inventory unit):

<b>Unit#</b>	<b>Size (historic acres)</b>	<b>Natural Condition? Y/N</b>	<b>Outstanding Solitude? Y/N</b>	<b>Outstanding Primitive &amp; Unconfined Recreation? Y/N</b>	<b>Supplemental Values? Y/N</b>
1-83	21,000	N	NA	NA	NA
1-83A*	11,808	N	NA	NA	NA

\*The inventory of this unit was updated in 2012. However, due to a State Office-sponsored Wilderness Inventory Consistency Evaluation and subsequent guidance, the 2012 inventory analysis and findings are being replaced by this current 2018 inventory review. Documentation of the 2012 inventory can be found in the wilderness inventory project record.

*Summarize any known primary reasons for prior inventory findings listed in this table:*

In 1979, historic Unit 1-83 was described as a low rolling table land with scattered rims rising to a higher promontory at Jug Mountain. The vegetation was primarily sagebrush with about 3,000 acres of crested wheatgrass seeding in the southeast portion. A chemical waste dump was noted several miles to the northeast of the unit. The presence of the BPA power line on the west, and the other existing disturbances including roads, fencing, and the seeding had reduced the naturalness across the majority of the unit. Opportunities for solitude and primitive and unconfined recreation were not evaluated.

**FORM 2**

**DOCUMENTATION OF CURRENT WILDERNESS INVENTORY  
CONDITIONS**

**Unit Number/Name:** OR-015-083A/ Jug Mountain

**(1) Is the unit of sufficient size?** Yes  X  No \_\_\_\_\_

Between 2007 and 2016, BLM staff conducted field inventory in the area as part of a process to update its road and wilderness inventories and to gather additional information to supplement ONDA's wilderness information. This fieldwork included photo documentation of the boundary and interior routes and a re-evaluation of wilderness characteristics for this area. Using both ONDA and BLM photos, field logs, and staff field knowledge, the BLM completed route analysis within the area in 2017.

The BLM determined that the inventory unit is bounded by BLM road 6184-00 and 6164-00 to the north; a right-of-way for a Bonneville Power Administration power line to the west; State of Oregon lands to the south; BLM interim numbered road 6164-BO, 6164-AD and right-of-ways for residential power lines and a historic BLM administration site to the east. Due to changes in boundary determinations (road and power line right-of-ways buffer corrections) and cut-outs of unnatural features (well, pipelines, troughs), approximately 483 acres were removed from the unit.

Thus, based on these boundary and road determinations, the BLM found the Jug Mountain inventory unit to exceed the minimum size criteria at approximately 11,326 acres of BLM-administered lands.

Additional background on the process the BLM followed during this evaluation is contained in the document, *Wilderness Inventory Maintenance Process for the Lakeview Resource Area, BLM* and in the *Route Analysis Forms*. Both documents can be found in the wilderness inventory file.

**DESCRIPTION OF CURRENT CONDITIONS:**

This unit is located approximately 6 miles southwest of Alkali Lake, Oregon. It is approximately 7.5 miles long by 2 miles wide. Topographically, the majority of the unit

consists of rolling hills (50-100 ft. high), a few dry lakebed depressions (10-20 ft. deep), and the isolated, relatively small, formation of Jug Mountain (550 ft. high, less than 400 acres) to the south. Overall, the unit ranges in elevation from 4,535 to 5,139 feet. Vegetation is comprised of sagebrush and grasses.

**(2) Is the unit in a natural condition?** Yes  No  N/A

In 1979, historic Unit 1-83 contained multiple disturbances which reduced the apparent naturalness of the area including “ways,” fencing, and a 3,000 acre seeding, as well as the presence of the BPA power line along the western boundary.

The unit currently contains the following man-made developments/disturbances: 7,796 acres of wildfire, 7,232 acres of seeding, 12 miles of fence, 8.25 miles of motorized routes, 1 mile of reclaiming routes, 3 miles of cat lines, 5 waterholes, 1 reservoir, and a wildlife guzzler.

Presently, almost 4 decades after the original inventory, these developments are weathered and grown over with herbaceous grasses and sagebrush. As a result, developments now fade into the background of the unit and are largely only noticeable at a close distance (1/4<sup>th</sup> mile or less) and are thus substantially unnoticeable from further distances. Furthermore, many of the disturbances are located near the perimeter of the unit and, as such, have a small area of influence. Additionally, areas that were seeded or allowed to revegetate naturally have returned to a natural, post fire, appearing condition

Based on a review of all the available information including photos, staff knowledge, and field review, the BLM concluded that the unit appears in a natural condition where the imprints of man are substantially unnoticeable.

**(3) Does the unit (or the remainder of the unit if a portion has been excluded due to unnaturalness and the remainder is of sufficient size) have outstanding opportunities for solitude?** Yes  No  N/A

In 1979, opportunities for solitude within historic Unit 1-83 were not evaluated.

The BLM acknowledges that there are limited opportunities for solitude within the Jug Mountain inventory unit. Topographically, the majority of the unit consists of rolling hills (50-100 ft. high), a few dry lakebed depressions (10-20 ft. deep), and the isolated, relatively small, formation of Jug Mountain (550 ft. high, less than 400 acres) to the south. Overall, the unit ranges in elevation from 4,535 to 5,139 feet. Vegetation is comprised of sagebrush and grasses. These opportunities are less than outstanding as the area’s characteristic landscape lacks vegetative screening and existing topographic screening is insufficient to effectively allow those recreating in the area to avoid the sights and sounds of others.

Thus, for the reasons specified above and based on a review of all the available information including (BLM and citizen provided) photos, staff knowledge, and field review, the BLM concluded the Jug Mountain inventory unit does not possess outstanding opportunities for solitude.

**(4) Does the unit** (or the remainder of the unit if a portion has been excluded due to unnaturalness and the remainder is of sufficient size) **have outstanding opportunities for primitive and unconfined recreation?** Yes \_\_\_\_\_ No  X  N/A \_\_\_\_\_

In 1979, opportunities for primitive and unconfined recreation within historic Unit 1-83 were not evaluated.

The BLM finds the unit offers limited opportunities for hiking, horseback riding, backpacking, camping, wildlife observation, exploration, scenery, photography, stargazing, trapping, and hunting. However, the BLM determined that the unit does not possess outstanding opportunities for primitive and unconfined recreation through either the diversity of recreational activities possible in the area or by the outstanding quality of one opportunity relative to opportunities found within the Lakeview Resource Area.

**(5) Does the unit have supplemental values?** Yes \_\_\_\_\_ No \_\_\_\_\_ N/A  X

Supplemental values were not evaluated as the unit was determined to lack both outstanding opportunities for solitude and or primitive and unconfined recreation, and therefore does not meet the minimum wilderness criteria.

**Summary of Findings and Conclusion**

**Unit Number/Name:** OR-015-083A/ Jug Mountain

**Summary Results of Analysis:**

- 1. Does the area meet the size requirements?        X   Yes         No
- 2. Does the area appear to be natural?              X   Yes         No
- 3. Does the area offer outstanding opportunities for solitude or a primitive and unconfined type of recreation?           Yes   X   No         NA
- 4. Does the area have supplemental values?           Yes      No   X   NA

**Conclusion (Check One):**


     The area- or a portion of the area- has wilderness character:  
*(items 1, 2 and 3 must be checked "yes").*

  X   The area does not have wilderness character: *(any of items 1, 2 and 3 are checked "no").*

**Prepared by (Member Names and Titles):**

  
Chris Bishop: Outdoor Recreation Planner

11/1/2018  
Date

  
Jami Ludwig: Assistant Field Manager

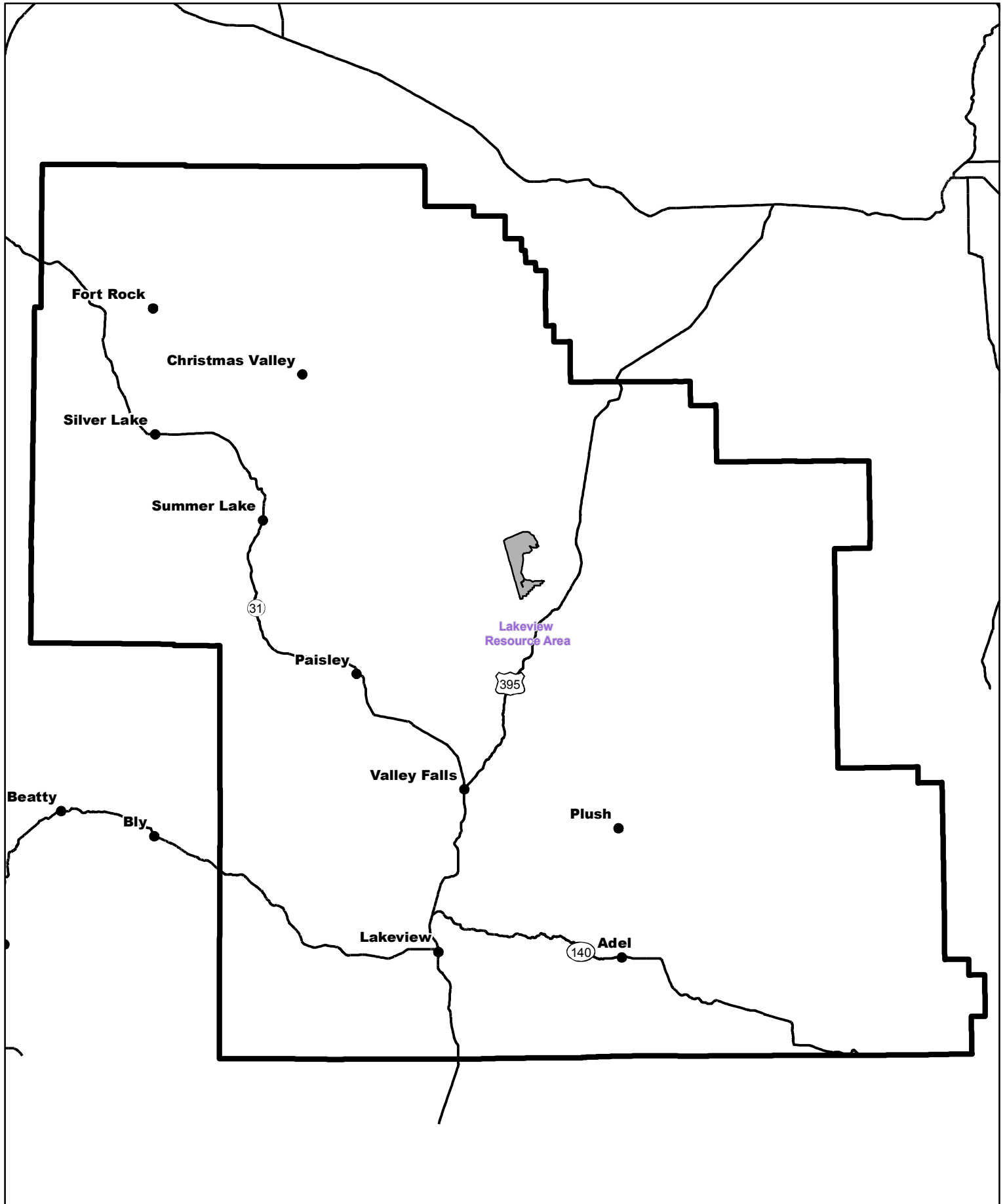
11/1/18  
Date


**Approved by:**

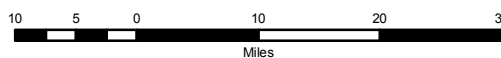
  
J. Todd Forbes  
Field Manager


11/1/18  
Date

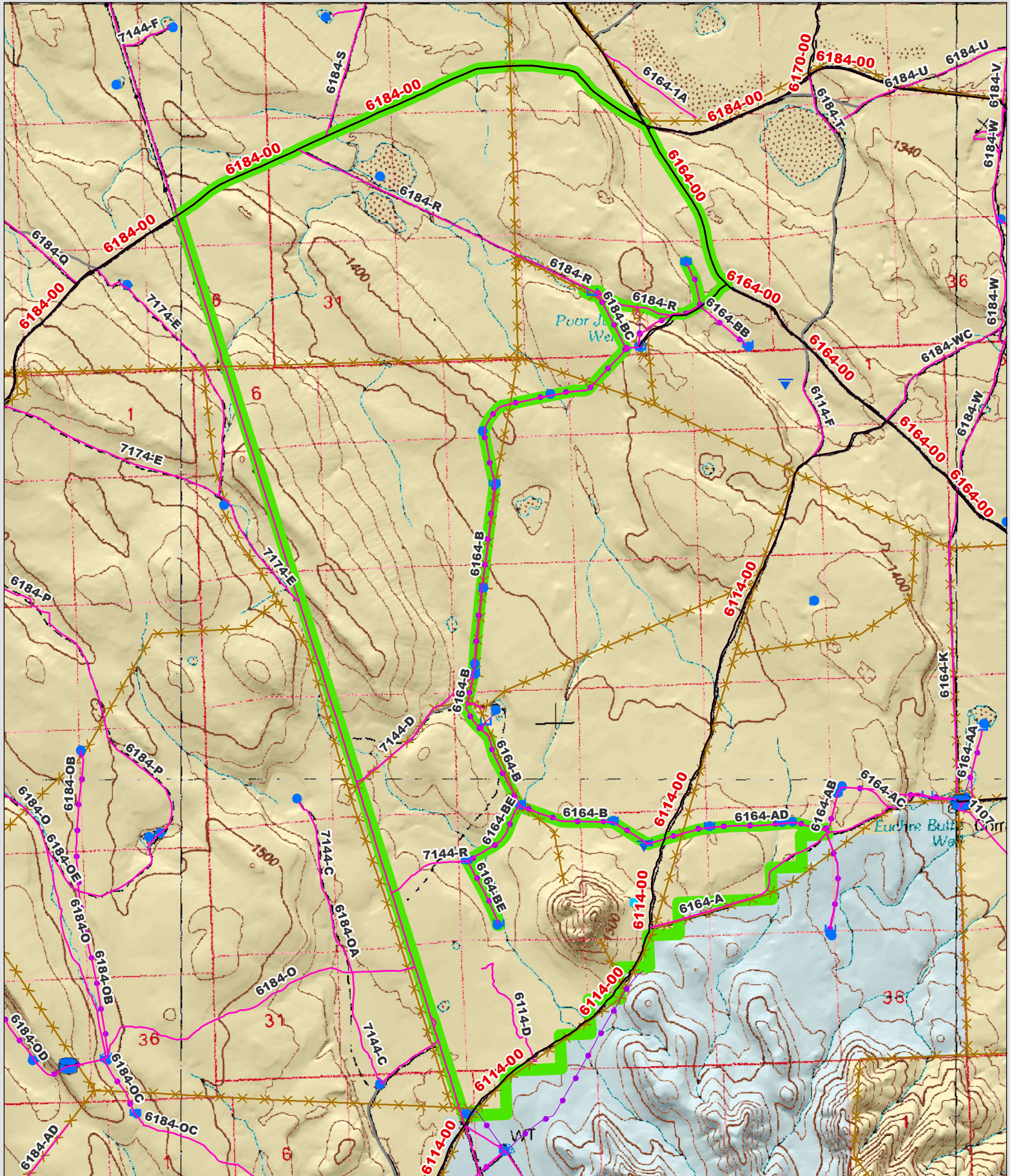
*This form documents information that constitutes an inventory finding on wilderness characteristics. It does not represent a formal land use allocation or a final agency decision subject to administrative remedies under 43 CFR parts either 4 or 1610.5-2.*



 Wilderness Character Inventory Unit



 No warranty is made by the Bureau of Land Management as to the accuracy, reliability, or completeness of these data for individual or aggregate use with other data. Original data were compiled from various sources. This information may not meet National Map Accuracy Standards. This product was developed through digital means and may be updated without notification.



**Wilderness Character Inventory Unit**

**Ownership**

- Bureau of Land Management
- U.S. Forest Service
- State
- Private/Unknown

**Roads/Trails**

- Motorized Routes
- Highways
- Reclaiming Routes
- Interim Routes

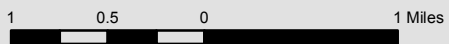
**Pipelines and Ditches**

- Ditch
- Water Pipeline
- Guzzler
- Fences

**Water Developments**

- Dam
- Reservoir
- Spring Development
- Trough
- Water Diversion

- Water Tank
- Waterhole
- Well - Water



No warranty is made by the Bureau of Land Management as to the accuracy, reliability, or completeness of these data for individual or aggregate use with other data. Original data were compiled from various sources. This information may not meet National Map Accuracy Standards. This product was developed through digital means and may be updated without notification.