

Year: 2018

Inventory Unit Number/Name: OR-015-049/ Horse Mountain

FORM 1

**DOCUMENTATION OF BLM WILDERNESS INVENTORY
FINDINGS ON RECORD**

1. Is there existing BLM wilderness inventory information on all or part of this area?

No _____ Yes X (if more than one unit is within the area, list the names/numbers of those units):

a) **Inventory Source:** Wilderness – Proposed Initial Inventory: Roadless Areas and Islands Which Clearly Do Not Have Wilderness Characteristics; USDI BLM - Oregon and Washington, April 1979.

b) **Inventory Unit Number(s)/ Name(s):** OR-1-49/ Horse Mountain

c) **Map Name(s)/Number(s):** Proposed Initial Inventory: Roadless Areas and Islands Which Do Not Have Wilderness Characteristics; USDI BLM - Oregon, April 1979.

d) **BLM District(s)/Field Office(s):** Lakeview District, Lakeview Resource Area.

2. BLM Inventory Findings on Record:

Existing inventory information regarding wilderness characteristics (if more than one BLM inventory unit is associated with the area, list each unit and answer each question individually for each inventory unit):

Unit #	Size (historic acres)	Natural Condition? Y/N	Outstanding Solitude? Y/N	Outstanding Primitive & Unconfined Recreation? Y/N	Supplemental Values? Y/N
1-49	18,500	N	N/A	N/A	N/A
1-49*	15,687	N	N/A	N/A	N/A

* The inventory of this unit was updated in 2012. However, due to a State Office-sponsored Wilderness Inventory Consistency Evaluation and subsequent guidance, the 2012 inventory analysis and findings are being replaced by this current 2018 inventory review. Documentation of the 2012 inventory can be found in the wilderness inventory project record.

Summarize any known primary reasons for prior inventory findings listed in this table:

The previous inventory in 1979 described the area as consisting of rolling hills, which rise from a flat toward Horse Mountain. Two-thirds of the unit was dominated by sagebrush and the remaining third (approximately 6,400 acres) had been sprayed and reseeded for livestock production. The lack of topographic and vegetative screening allowed wells, pipelines, roads, and the seeding to dominate the area. As a result, the unit was not found to be in a natural condition. Solitude, recreation, and supplemental values were not explicitly addressed.

FORM 2

**DOCUMENTATION OF CURRENT WILDERNESS INVENTORY
CONDITIONS**

Unit Number/Name: OR-015-049/ Horse Mountain

(1) Is the unit of sufficient size? Yes No

Between 2008 and 2016, BLM staff conducted field inventory in the area as part of a process to update its road and wilderness inventories and to gather additional information to supplement ONDA's wilderness information. This fieldwork included photo documentation of the boundary and interior routes and a re-evaluation of wilderness characteristics for this area. Using both ONDA and BLM photos, field logs, and staff field knowledge, the BLM completed route analysis within the area in 2017.

The BLM determined that the inventory unit is bounded by BLM Roads 6164-D0 on the west and south; 6164-F0 on the north; and 6164-00 on the east. Due to changes in boundary determinations (roads) and cutouts of high concentrations of unnatural features (pipelines, well houses, water storage tanks, propane tanks), approximately 350 acres were removed from the unit.

Thus, based on these boundary and road determinations, the BLM found the Horse Mountain inventory unit to exceed the minimum size criteria at approximately 15,345 acres of BLM-administered lands.

Additional background on the process that the BLM followed during this evaluation is contained in the document, *Wilderness Inventory Maintenance Process for the Lakeview Resource Area, BLM* and in the *Route Analysis Forms*. Both documents can be found in the wilderness inventory file.

DESCRIPTION OF CURRENT CONDITIONS:

The current unit is located approximately 11 miles northwest of Alkali Lake, Oregon. The unit is approximately 6 miles long by 4.5 miles wide. Topographically, the unit is dominated by Horse Mountain (rising over 900 ft. higher than the surrounding area) in the northern

portion of the unit. Overall, the unit is very diverse with numerous features including buttes, peaks, mesas, ridges, broken rims, and drainages. Elevation throughout the unit range from 4,420 – 5,516 feet. The southern boundary borders the northern edge of Poverty Basin and comprises the only flat ground in the unit. Vegetatively, the unit is covered with sagebrush, rabbit brush, and grasses. Wildfires burned approximately 6,477 acres in 1983 and 1986.

(2) Is the unit in a natural condition? Yes No N/A

In 1979, the original inventory noted 6,400 acres of the unit had been sprayed and reseeded for livestock production. The lack of topographic and vegetative screening allowed wells, pipelines, roads, and the seeding to dominate the area. As a result, the unit was not found to be in a natural condition.

The unit currently contains the following man-made developments/disturbances: 6,477 acres or wildfire, 3,351 acres of chemical treatments, 3,308 acres of seeding, 11 miles of fence lines, 4.5 miles of motorized routes, 2 miles of reclaiming routes, 3 waterholes, and 1 trough.

Presently, almost 4 decades after the original inventory, these developments are weathered and grown over with herbaceous grasses, rabbit brush, and sagebrush. As a result, developments now fade into the background of the unit and are largely only noticeable at a close distance (1/4th mile or less) and are thus substantially unnoticeable from further distances. The topography of the area also plays a large role in screening disturbances and man-made developments. Furthermore, the majority of disturbances are located near the perimeter of the unit and, as such, have a small area of influence. Additionally, areas that were seeded or allowed to revegetate naturally after wildfire have been invaded by rabbit bush, sagebrush, and grasses and have returned to a natural, post fire, appearing condition.

Based on a review of all the available information including photos, staff knowledge, and field review, the BLM concluded that the unit appears in a natural condition where the imprints of man are substantially unnoticeable.

(3) Does the unit (or the remainder of the unit if a portion has been excluded due to unnaturalness and the remainder is of sufficient size) have outstanding opportunities for solitude? Yes No N/A

In 1979, the original inventory failed to mention solitude. However, that unit was described as consisting of rolling hills, which rose to Horse Mountain. Overall, the unit was found to lack topographic and vegetative screening.

The BLM determined that there are several outstanding opportunities for solitude across the unit, particularly within the central portion of the unit and areas near Horse Mountain, due to topographic screening. Topographically, the unit is dominated by Horse Mountain (rising over 900 ft. higher than the surrounding area) in the northern portion of the unit. Overall, the unit is very diverse with numerous features including buttes, peaks, mesas, ridges, broken rims, and drainages. Elevation throughout the unit range from 4,420 – 5,516 feet. Due to the

above-described compartmentalized topography within the unit, one would easily be able to avoid the sights and sounds of others within the unit.

Thus, for the reasons specified above and based on a review of all the available information including (BLM and citizen provided) photos, staff knowledge, and field review, the BLM concluded the Horse Mountain inventory unit possesses outstanding opportunities for solitude.

(4) Does the unit (or the remainder of the unit if a portion has been excluded due to unnaturalness and the remainder is of sufficient size) **have outstanding opportunities for primitive and unconfined recreation?** Yes No N/A

In 1979, the original inventory failed to mention primitive and unconfined recreation. However, that unit was described as consisting of rolling hills, which rose to Horse Mountain.

The BLM finds the combination and diversity of hiking, horseback riding, backpacking, camping, wildlife observation, exploration, scenery, photography, trapping, hunting, and stargazing, are exceptional. The BLM determined that hiking/horseback riding peak to peak throughout the northern (Horse Mountain) and central portions of the unit represents a unique opportunity for primitive and unconfined recreation.

5) Does the unit have supplemental values? Yes No N/A

The BLM found the unit to possess archaeological and geological values, as well as, the presence of golden eagle, prairie falcon, pronghorn antelope, and sage-grouse habitat.

Summary of Findings and Conclusion

Unit Number and Name: OR-015-049/ Horse Mountain

Summary Results of Analysis:

- 1. Does the area meet the size requirements? X Yes No
- 2. Does the area appear to be natural? X Yes No
- 3. Does the area offer outstanding opportunities for solitude or a primitive and unconfined type of recreation? X Yes No NA
- 4. Does the area have supplemental values? X Yes No NA


Conclusion (Check One):

- X The area- or a portion of the area- has wilderness character:
(items 1, 2 and 3 must be checked "yes").
- The area does not have wilderness character: *(any of items 1, 2 and 3 are checked "no").*

Prepared by (Member Names and Titles):



Chris Bishop: Outdoor Recreation Planner

 6/4/18
Date


Jami Ludwig: Assistant Field Manager

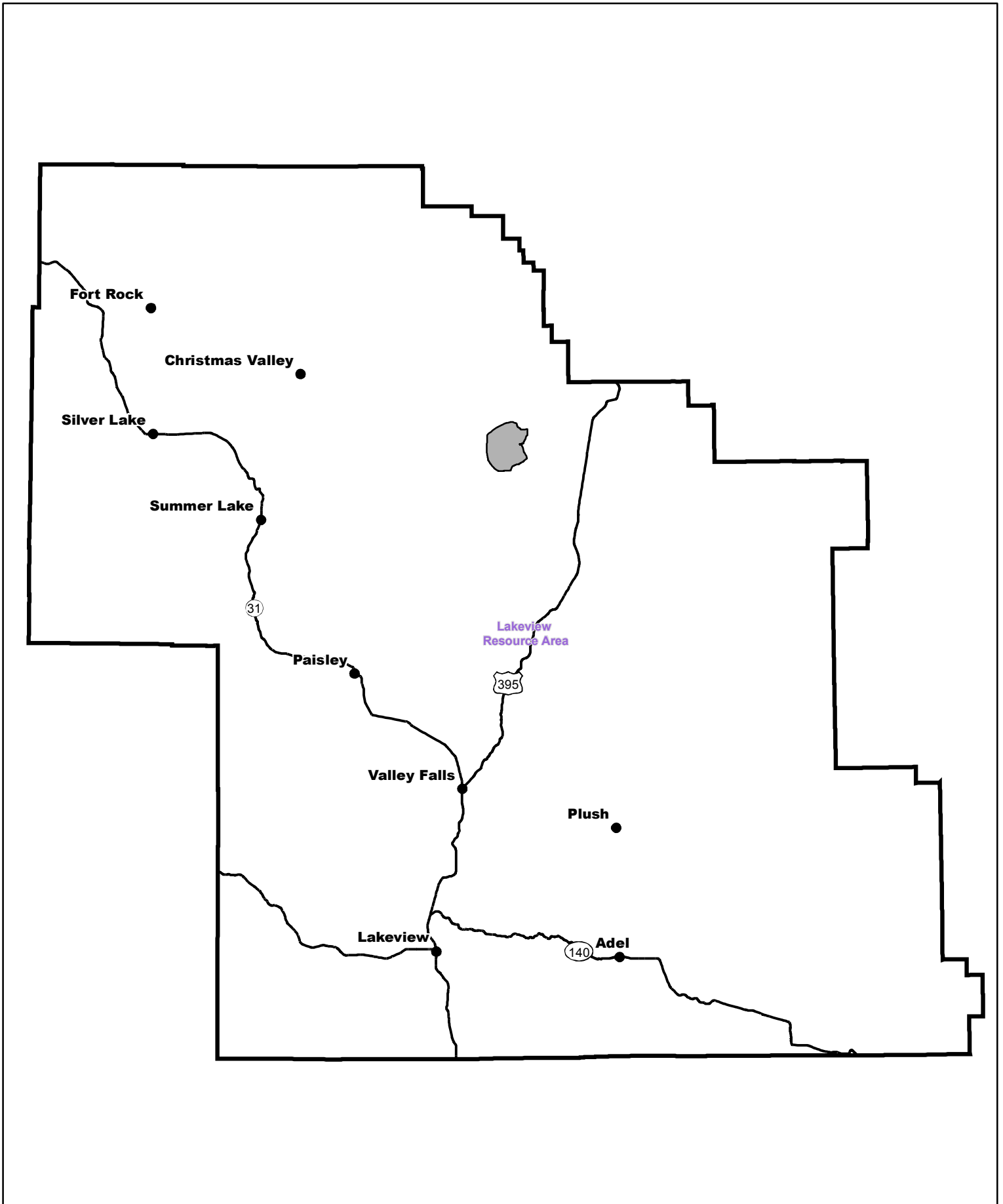
 6/4/18
Date


Approved by:


J. Todd Forbes
Field Manager


 6/4/18
Date

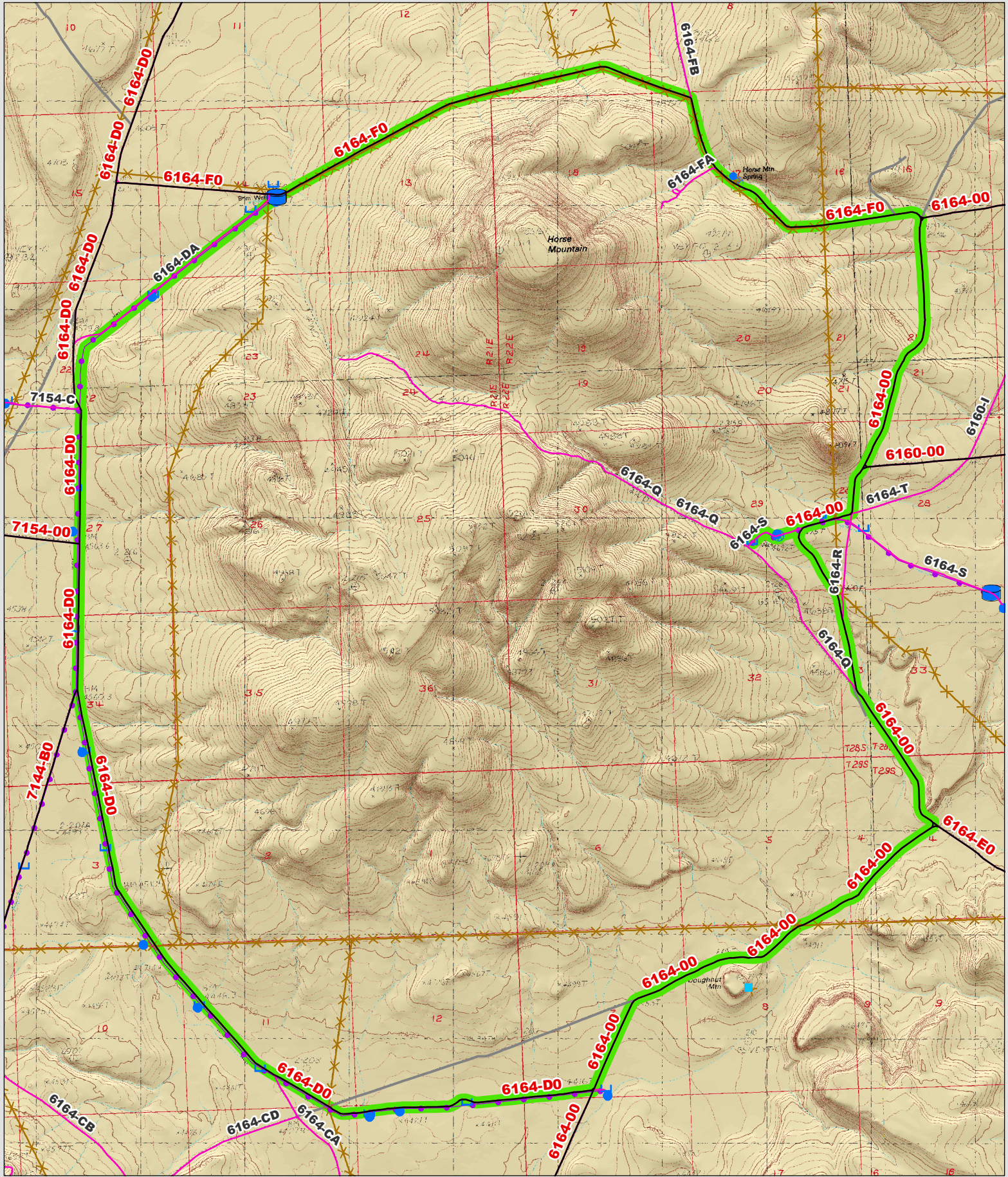
This form documents information that constitutes an inventory finding on wilderness characteristics. It does not represent a formal land use allocation or a final agency decision subject to administrative remedies under 43 CFR parts either 4 or 1610.5-2.



 Wilderness Character Inventory Unit



 No warranty is made by the Bureau of Land Management as to the accuracy, reliability, or completeness of these data for individual or aggregate use with other data. Original data were compiled from various sources. This information may not meet National Map Accuracy Standards. This product was developed through digital means and may be updated without notification.



Wilderness Character Inventory Unit

Ownership

- Bureau of Land Management
- U.S. Forest Service
- Private/Unknown

Roads/Trails

- Motorized Routes
- Highways
- Reclaiming Routes
- Interim Routes

Pipelines and Ditches

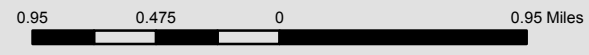
- Ditch
- Water Pipeline
- Guzzler
- Fences

Water Developments

- Dam
- Reservoir
- Spring Development
- Trough
- Water Diversion

Water Developments

- Water Tank
- Waterhole
- Well - Water



No warranty is made by the Bureau of Land Management as to the accuracy, reliability, or completeness of these data for individual or aggregate use with other data. Original data were compiled from various sources. This information may not meet National Map Accuracy Standards. This product was developed through digital means and may be updated without notification.