

Year: 2018

Inventory Unit Number/Name: OR-015-020/ Hayes Butte*

FORM 1

**DOCUMENTATION OF BLM WILDERNESS INVENTORY
FINDINGS ON RECORD**

1. Is there existing BLM wilderness inventory information on all or part of this area?

No _____ Yes X (if more than one unit is within the area, list the names/numbers of those units):

a) Inventory Source:

- a. Wilderness – Proposed Initial Inventory: Roadless Areas and Islands Which Clearly Do Not Have Wilderness Characteristics; USDI BLM - Oregon and Washington, April 1979.
- b. Wilderness Review – Initial Inventory: Final Decision on Public Lands Obviously Lacking Wilderness Characteristics and Announcement of Public Lands to be Intensively Inventoried for Wilderness Characteristics; USDI BLM - Oregon and Washington, August 1979.

b) Inventory Unit Number(s)/ Name(s): OR-1-20/ Hayes Butte South

c) Map Name(s)/Number(s): Final Decision - Initial Wilderness Inventory: Public Lands and Islands Which Do Not Have Wilderness Characteristics and Units To Be Intensively Inventoried; USDI BLM - Oregon, August 1979.

d) BLM District(s)/Field Office(s): Lakeview District, Lakeview Resource Area.

*Note: Unit name was changed to better reflect values and features found within the unit, and to reduce confusion of similarly named inventory units.

2. BLM Inventory Findings on Record:

Existing inventory information regarding wilderness characteristics (if more than one BLM inventory unit is associated with the area, list each unit and answer each question individually for each inventory unit):

Unit #	Size (historic acres)	Natural Condition? Y/N	Outstanding Solitude? Y/N	Outstanding Primitive & Unconfined Recreation? Y/N	Supplemental Values? Y/N
1-20	9,600	N	N/A	N/A	N/A

1-20*	6,795	N	N/A	N/A	N/A
-------	-------	---	-----	-----	-----

* The inventory of this unit was updated in 2010. However, due to a State Office-sponsored Wilderness Inventory Consistency Evaluation and subsequent guidance, the 2010 inventory analysis and findings are being replaced by this current 2018 inventory review. Documentation of the 2010 inventory can be found in the wilderness inventory project record.

Summarize any known primary reasons for prior inventory findings listed in this table:

Hayes Butte, located in the north of the unit had a fairly rugged topography with juniper stands. The remainder of the unit was described as sloping terrain with little relief dropping to surrounding flats. Vegetation consisted of juniper was noted on Hayes Butte, tall grass in seeding areas, and greasewood in the north. Although approximately 1,000 acres in the north does not appear heavily impacted by man’s works, the remainder of the unit is dominated by activities on private lands. a 500 KV power line, a 900-acre seeding, roads, and “ways.” Ultimately, the unit was described as being primarily unnatural. The absence of topographic and vegetative screening in the majority of the area, contributed to the unit being found to lack outstanding opportunities for solitude, as well as, primitive and unconfined recreation.

FORM 2

DOCUMENTATION OF CURRENT WILDERNESS INVENTORY CONDITIONS

Unit Number/Name: OR-015-020/ Hayes Butte

(1) Is the unit of sufficient size? Yes X No _____

Between 2006 and 2016, BLM staff conducted field inventory in the area as part of a process to update its road and wilderness inventories and to gather additional information to supplement ONDA’s wilderness information. This fieldwork included photo documentation of the boundary and interior routes and a re-evaluation of wilderness characteristics for this area. Using both ONDA and BLM photos, field logs, and staff field knowledge, the BLM completed route analysis within the area in 2017.

The BLM determined that the inventory unit is bounded by BLM Road 7117-00 and a fuels treatment boundary (which follows BLM route 6139-A0), BLM interim numbered roads 7117-B0, 6139-AA, 6139-AC, and private lands on the north; Bonneville Power Administration right-of-way for a 500-KV power line, Tuff Butte pipeline, and private lands on the east; BLM interim numbered road 7127-D0 on the south; and BLM interim numbered road 7127-DA and private lands on the west. Due to changes in boundary determinations (roads and power line rights-of-ways buffer

corrections) and cutouts of unnatural features (pipelines and fuels treatments), approximately 1,321 acres were removed from the unit.

Thus, based on these boundary and road determinations, the BLM found the Hayes Butte inventory unit to exceed the minimum size criteria at approximately 5,475 acres of BLM-administered lands.

Additional background on the process that the BLM followed during this evaluation is contained in the document, *Wilderness Inventory Maintenance Process for the Lakeview Resource Area, BLM* and in the *Route Analysis Forms*. Both documents can be found in the wilderness inventory file.

DESCRIPTION OF CURRENT CONDITIONS:

The unit is located approximately 7 miles northeast of Silver Lake, Oregon. The unit is approximately 3.5 miles long by 3.5 miles wide. Topographically, Hayes Butte, centrally located within the unit, rises from an elevation of 4,315 feet up to 5,754 feet, is a dominant and diverse formation, with numerous steep peaks, points, saddles, ridges, rims, folds, drainages, and aspects around the circumference of its formation. Approximately 5,000 acres of the unit is covered in high-density western juniper stand, much of which is old-growth. The remaining vegetation is sagebrush and grass.

(2) Is the unit in a natural condition? Yes No N/A

In 1979, the original inventory was described as being dominated by activities on private lands and containing a 500-KV power line, a 900-acre seeding, roads, and “ways.” Ultimately, the unit was described as being primarily unnatural.

The unit currently contains the following man-made developments/disturbances: 138 acres of seeding, 135 acres of chemical treatments, 10 miles of fence lines, 5 miles of motorized routes, 1 reservoir, 1 waterhole, and 1 wildlife guzzler.

Presently, almost 4 decades after the original inventory, these developments are weathered and grown over with herbaceous grasses, sagebrush, and juniper. As a result, developments now fade into the background of the unit and are largely only noticeable at a close distance (1/4th mile or less) and are thus substantially unnoticeable from further distances. The topography and vegetation of the area also plays a large role in screening disturbances and man-made developments. Furthermore, many of the disturbances are located near the perimeter of the unit and, as such, have a small area of influence.

Based on a review of all the available information including photos, staff knowledge, and field review, the BLM concluded that the unit appears in a natural condition where the imprints of man are substantially unnoticeable.

(3) Does the unit (or the remainder of the unit if a portion has been excluded due to unnaturalness and the remainder is of sufficient size) **have outstanding opportunities for solitude?** Yes No N/A

In 1979, the original inventory determined that the absence of topographic and vegetative screening in the majority of the area, contributed to the unit being found to lack outstanding opportunities for solitude.

The BLM determined that there are several outstanding opportunities for solitude across the unit due to topographic and vegetative screening. Topographically, Hayes Butte, centrally located within the unit, rises from an elevation of 4,315 feet up to 5,754 feet, is a dominant and diverse formation, with numerous steep peaks, points, saddles, ridges, rims, folds, drainages, and aspects around the circumference of its formation. Approximately 5,000 acres of the unit is covered in high-density western juniper stand, much of which is old-growth. Vegetatively, western juniper stands have greatly expanded in height, width, and density. Sufficient pockets of juniper for screening purposes can now be found across the majority of the unit (over 5,000 acres). Due to the above-described compartmentalized topography and vegetative screening throughout the unit, one would easily be able to avoid the sights and sounds of others within the unit.

Thus, for the reasons specified above and based on a review of all the available information including (BLM and citizen provided) photos, staff knowledge, and field review, the BLM concluded the Hayes Butte inventory unit possesses outstanding opportunities for solitude.

(4) Does the unit (or the remainder of the unit if a portion has been excluded due to unnaturalness and the remainder is of sufficient size) **have outstanding opportunities for primitive and unconfined recreation?** Yes No N/A

In 1979, the original inventory determined that the absence of topographic and vegetative screening in the majority of the area, contributed to the unit being found to lack outstanding opportunities for primitive and unconfined recreation.

The BLM finds the combination and diversity of hiking, horseback riding, backpacking, camping, wildlife observation, exploration, scenery, photography, trapping, and hunting, are exceptional. The BLM determined that hiking/horseback riding throughout the unit and atop Hayes Butte, represents a unique opportunity for primitive and unconfined recreation.

5) Does the unit have supplemental values? Yes No N/A

The BLM found the unit to possess archaeological and geological values as well as the presence of elk, mule deer, golden eagle, and sage-grouse habitat.

Additionally, a small portion of the unit near Horning Gap, in the northwest corner of the inventory unit, contains approximately 100 acres of the Connley Hills Area of Critical Environmental Concern (ACEC)/Research Natural Area (RNA). The Connley Hills ACEC/RNA was designated to preserve significant cultural sites that contain materials and information from Great Basin inhabitants dating back 11,000 years, as well as, to protect distinct vegetation communities, three of which are found nowhere else in Oregon. This area also serves as an important reference point for comparative rangeland health studies and research projects. (Refer to: Lakeview Proposed Resource Management Plan and Final Environmental Impact Statement 2003. Pg. A-197).

Summary of Findings and Conclusion

Unit Number and Name: OR-015-020/ Hayes Butte

Summary Results of Analysis:

- 1. Does the area meet the size requirements? Yes No
- 2. Does the area appear to be natural? Yes No
- 3. Does the area offer outstanding opportunities for solitude or a primitive and unconfined type of recreation? Yes No NA
- 4. Does the area have supplemental values? Yes No NA

Conclusion (Check One):

- The area- or a portion of the area- has wilderness character: *(items 1, 2 and 3 must be checked "yes")*.
- The area does not have wilderness character: *(any of items 1, 2 and 3 are checked "no")*.

Prepared by (Member Names and Titles):



Chris Bishop: Outdoor Recreation Planner

6/4/18
Date


Jami Ludwig: Assistant Field Manager

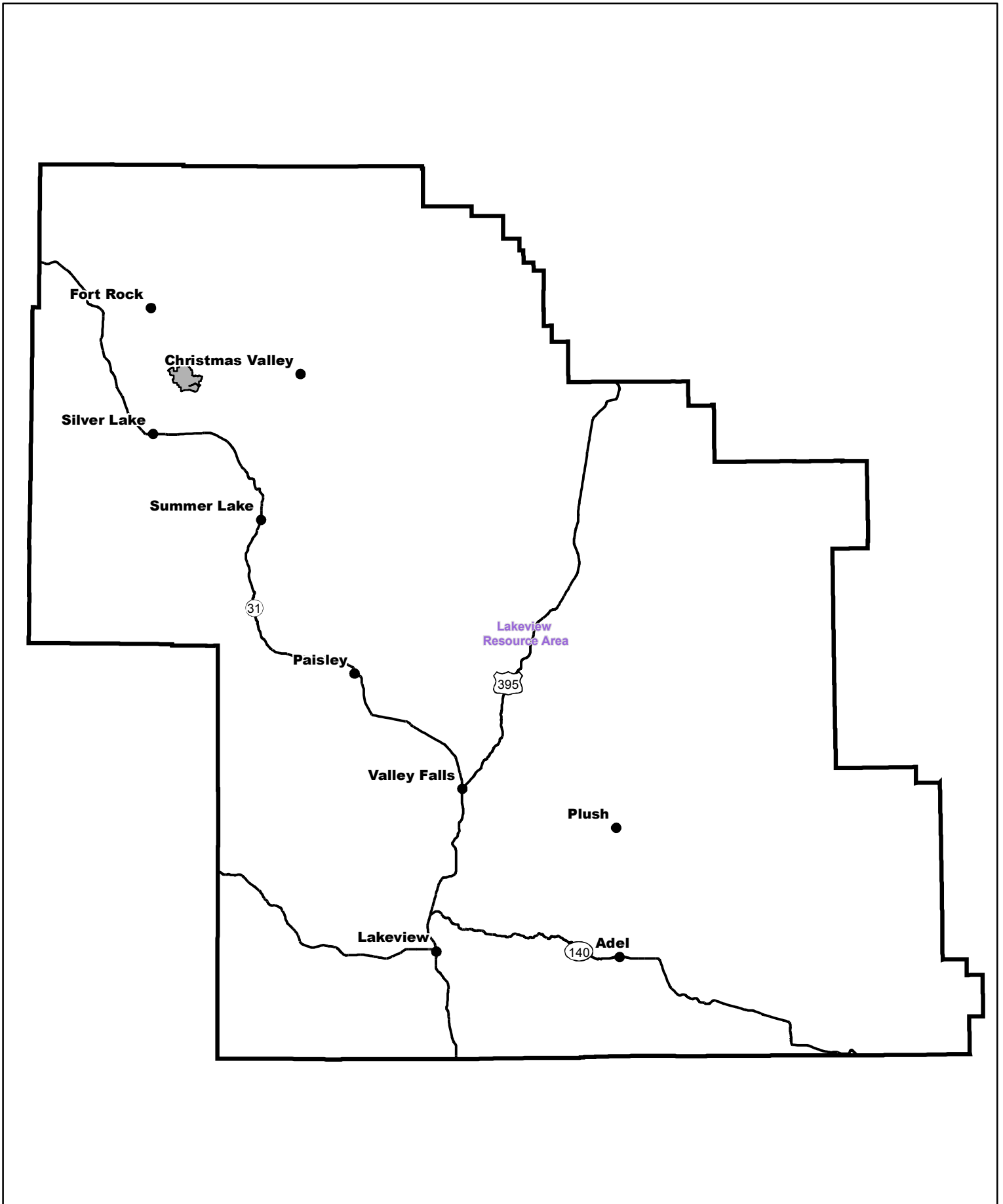
6/4/18
Date

Approved by:

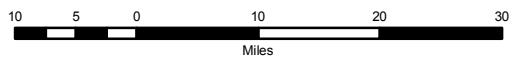

J. Todd Forbes
Field Manager

6/4/18
Date

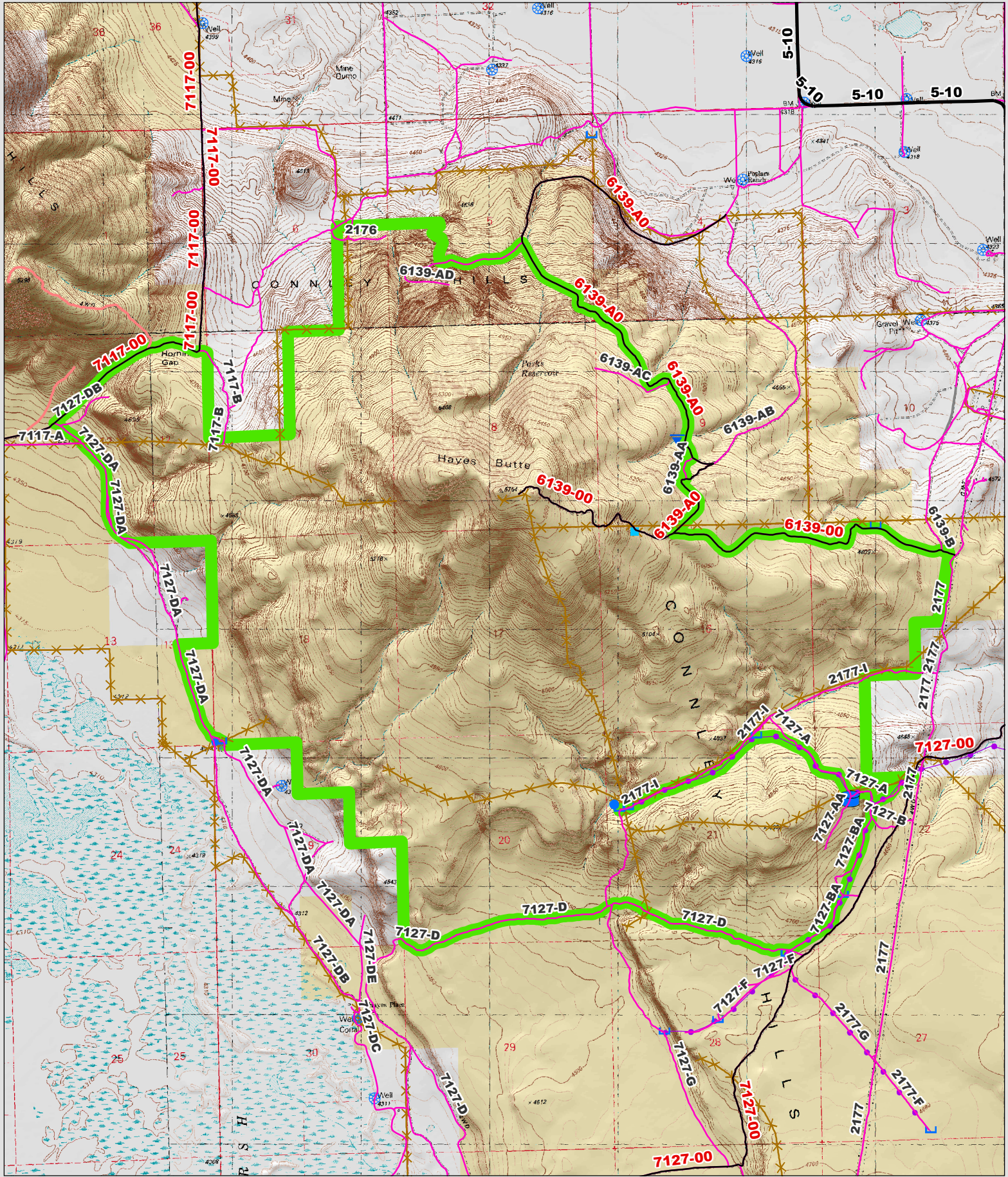
This form documents information that constitutes an inventory finding on wilderness characteristics. It does not represent a formal land use allocation or a final agency decision subject to administrative remedies under 43 CFR parts either 4 or 1610.5-2.



Wilderness Character Inventory Unit



No warranty is made by the Bureau of Land Management as to the accuracy, reliability, or completeness of these data for individual or aggregate use with other data. Original data were compiled from various sources. This information may not meet National Map Accuracy Standards. This product was developed through digital means and may be updated without notification.



Wilderness Character Inventory Unit

Ownership

- Bureau of Land Management
- U.S. Forest Service
- Private/Unknown

Roads/Trails

- Motorized Routes
- Highways
- Reclaiming Routes
- Interim Routes

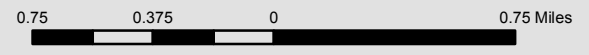
Pipelines and Ditches

- Ditch
- Water Pipeline
- Guzzler
- Fences

Water Developments

- Dam
- Reservoir
- Spring Development
- Trough
- Water Diversion

- Water Tank
- Waterhole
- Well - Water



No warranty is made by the Bureau of Land Management as to the accuracy, reliability, or completeness of these data for individual or aggregate use with other data. Original data were compiled from various sources. This information may not meet National Map Accuracy Standards. This product was developed through digital means and may be updated without notification.