

Year: 2020

Inventory Unit Number/Name: OR-015-146D/
Hawk Mountain Northeast Addition

FORM 1

**DOCUMENTATION OF BLM WILDERNESS INVENTORY
FINDINGS ON RECORD**

1. Is there existing BLM wilderness inventory information on all or part of this area?

No Yes X (if more than one unit is within the area, list the names/numbers of those units):

a) **Inventory Source:** Wilderness Inventory – Final Intensive Inventory Decisions; USDI BLM - Oregon and Washington, November 1980.

b) **Inventory Unit Number(s)/ Name(s):** 1-146A/ Hawk Mountain

c) **Map Name(s)/Number(s):** Intensive Wilderness Inventory - Final Decisions; USDI BLM - Oregon, November 1980.

d) **BLM District(s)/Field Office(s):** Lakeview District, Lakeview Resource Area & Burns District, Andrews Resource Area.

2. BLM Inventory Findings on Record:

Existing inventory information regarding wilderness characteristics (if more than one BLM inventory unit is associated with the area, list each unit and answer each question individually for each inventory unit):

Unit #	Size (historic acres)	Natural Condition? Y/N	Outstanding Solitude? Y/N	Outstanding Primitive & Unconfined Recreation? Y/N	Supplemental Values? Y/N
1-146A	72,160	Y	Y	Y	Y
1-146A*	3,194	Y	NA	NA	NA

* The inventory of this unit was updated in 2012. However, due to a State Office-sponsored Wilderness Inventory Consistency Evaluation and subsequent guidance, the 2012 inventory analysis and findings are being replaced by this current 2018 inventory review. Documentation of the 2012 inventory can be found in the wilderness inventory project record.

Summarize any known primary reasons for prior inventory findings listed in this table:

The majority of the subunit was described as a large basin ringed by hills on the west, north, and east. The area was open to the south. Vegetation in the subunit was primarily a big

sagebrush community with sparsely scattered junipers at higher elevations. The subunit contained five lakebed pits that were substantially noticeable in close proximity. The subunit contained 16 miles of primitive vehicle “ways,” a reservoir, and a tank; all of which were substantially unnoticeable. A 3,800-acre crested wheatgrass seeding was noted in Hawk Valley along the northern edge of the subunit that was substantially noticeable. The final decision removed this seeded area from the unit boundary.

The topography within the subunit provided the potential to avoid the sights and sounds of others and was found to be outstanding. The surrounding hills and peaks within the subunit offered ample opportunity for hiking and backpacking. The subunit unit was found to offer a high potential for primitive and unconfined recreation. The potential presence of archeological values and the adjacent proposed wilderness on the Sheldon National Antelope Refuge were noted as supplemental values.

FORM 2

DOCUMENTATION OF CURRENT WILDERNESS INVENTORY CONDITIONS

Unit Number/Name: OR-015-146D/ Hawk Mountain Northeast Addition

(1) Is the unit of sufficient size? Yes No

In 2018, the BLM received a citizen inventory from the Schadler Ranch. All these materials were considered during the BLM’s wilderness inventory process for this area.

Between 2008 and 2019, BLM staff conducted field inventory in the area as part of a process to update its road and wilderness inventories and to gather additional information to supplement ONDA’s wilderness information. This fieldwork included photo documentation of the boundary and interior routes and a re-evaluation of wilderness characteristics for this area. Using both ONDA and BLM photos, field logs, and staff field knowledge, the BLM completed route analysis within the area in 2017 and revised this information in 2019 based on new citizen submitted information submitted.

The BLM determined that the inventory unit is bounded by BLM Road 6126-00 and 6126-C0 to the north; 8251-00 to the northeast; and is contiguous with the Hawk Mountain WSA to the south. Due to changes in boundary determinations (roads) and cutout of unnatural features (pipelines), approximately 63 acres were removed from this unit. BLM also reviewed the Schadler submission but did not make any route changes based on this information.

Thus, based on these boundary and road determinations, the BLM found the Hawk Mountain Northeast Addition inventory unit does not meet the minimum size criteria at approximately 3,122 acres of BLM-administered lands. However, it does meet one of the exceptions to the size criteria; namely, that it is contiguous with BLM’s 69,640-acre Hawk Mountain WSA located to the south.

Additional background on the process that the BLM followed during this evaluation is contained in the document, *Wilderness Inventory Maintenance Process for the Lakeview Resource Area, BLM* and in the *Route Analysis Forms*. Both documents can be found in the wilderness inventory file.

DESCRIPTION OF CURRENT CONDITIONS:

The unit is located approximately 42 miles east of Adel, Oregon. The unit is approximately 5.75 miles long by 1 miles wide. Topographically the unit is comprised of the southern extent of Hawk Valley and lower third of the north facing slope of Hawk Mountain. A drainage (10 – 70 ft. deep) runs approximately 2 miles southeast corner down to Hawk Valley. The unit ranges in elevation from 5,532 to 6,100 feet. Vegetation consists of sagebrush, rabbit brush, and grass. Wildfire burned approximately 114 acres in the southern extent of the unit in 1992.

(2) Is the unit in a natural condition? Yes No N/A

In 1980, the much larger historic Unit 1-146A (which became Hawk Mountain WSA) contained five lakebed pits (that were substantially noticeable in close proximity), 16 miles of primitive vehicle “ways,” 1 reservoir, and a water tank; all of which were substantially unnoticeable. A 3,800-acre crested wheatgrass seeding was noted in Hawk Valley along the northern edge of the subunit that was substantially noticeable. The final decision removed this seeded area from the unit boundary

The Schadler Ranch noted that several of the manmade structures in the area were visible from long distances. The BLM reviewed all the information submitted but did not make any changes to this unit.

The unit currently contains the following man-made developments/ disturbances: 3,122 acres of chemical treatments and seeding, 114 acres of wildfire, 3.25 miles of motorized routes, 0.7 miles of reclaiming routes, 2.6 miles of fence line, 2 miles of cat line, 750 ft. of ditch, 3 waterholes, and 1 corral.

Presently, almost 4 decades after the original inventory, these developments are weathered and grown over with herbaceous grasses, sagebrush, and rabbit brush. As a result, developments now fade into the background of the unit and are largely only noticeable at a close distance (1/4th mile or less) and are thus substantially unnoticeable from further distances. Furthermore, many of the disturbances are located near the perimeter of the unit and, as such, have a small area of influence. Areas that were seeded or allowed to revegetate naturally after fire have been invaded by rabbit/ sagebrush and have returned to a natural, post fire, appearing condition. In addition, cat lines, now 26 years old, have also largely revegetated naturally or have been seeded.

Based on a review of all the available information including photos, staff knowledge, and field review, the BLM concluded, based on its own merits, the Hawk Mountain Northeast

Addition appears in natural condition where the imprint of man are substantially unnoticeable. Furthermore, since the unit is now contiguous with the Hawk Mountain WSA, the Hawk Mountain Northeast Addition must be analyzed in the context of these now shared wilderness values. After considering wilderness values offered by both units, the BLM determined that the Hawk Mountain Northeast Addition and the WSA contribute mutually additive effects to the natural condition of both units as a whole. Thus, the area was found to be in a natural condition primarily affected by the forces of nature.

(3) Does the unit (or the remainder of the unit if a portion has been excluded due to unnaturalness and the remainder is of sufficient size) **have outstanding opportunities for solitude?** Yes No N/A

In 1980, the much larger historic Unit 1-146A (which became Hawk Mountain WSA) was found to provide outstanding opportunities to avoid the sights and sounds of others due to the topography of the unit.

The BLM determined that the Hawk Mountain Northeast Addition on its own merit, provides limited opportunities for solitude and ultimately lacks adequate size or screening to provide outstanding opportunities. The unit is approximately 5.75 miles long by 1 miles wide. Topographically the unit is comprised of the southern extent of Hawk Valley and lower third of the north facing slope of Hawk Mountain. A drainage (10 – 70 ft. deep) runs approximately 2 miles southeast corner down to Hawk Valley. The unit ranges in elevation from 5,532 to 6,100 feet. Vegetation consists of sagebrush, rabbit brush, and grass. However, these opportunities would be enhanced by the additive effect of outstanding opportunities for solitude present within the 69,640-acre Hawk Mountain WSA to the south and must be analyzed in the context of these now shared wilderness values.

Thus, for the reasons specified above and based on a review of all the available information including (BLM and citizen provided) photos, staff knowledge, and field review, the BLM concluded that one would be able to avoid the sights and sounds of others within the inventory unit due to the contiguous values of the Hawk Mountain WSA.

(4) Does the unit (or the remainder of the unit if a portion has been excluded due to unnaturalness and the remainder is of sufficient size) **have outstanding opportunities for primitive and unconfined recreation?** Yes No N/A

In 1980, the much larger historic Unit 1-146A (which became Hawk Mountain WSA) was found to offer ample opportunity for hiking and backpacking within the unit's hills and peaks. The subunit unit was found to possess outstanding opportunities for primitive and unconfined recreation.

The BLM determined that the Hawk Mountain Northeast Addition on its own merit, provides limited opportunities for primitive and unconfined recreation and ultimately lacks adequate size to provide outstanding opportunities. However, opportunities for recreation would be enhanced by the additive effect of outstanding primitive recreation opportunities present

within the 69,640-acre Hawk Mountain WSA to the south and must be analyzed in the context of these now shared wilderness values.

Thus, for the reasons specified above and based on a review of all the available information including (BLM and citizen provided) photos, staff knowledge, and field review, the BLM concluded that outstanding opportunities for primitive and unconfined recreation are present within the Hawk Mountain Northeast Addition due to the contiguous values of the Hawk Mountain WSA.

(5) Does the unit have supplemental values? Yes X No N/A

The BLM found the unit to possess archaeological and geological values as well as the presence of mule deer, pronghorn antelope, California bighorn sheep, and sage-grouse habitat.

Summary of Findings and Conclusion

Unit Number and Name: OR-015-146D/ Hawk Mountain Northeast Addition

Summary Results of Analysis:

- 1. Does the area meet the size requirements? X Yes ___ No
- 2. Does the area appear to be natural? X Yes ___ No
- 3. Does the area offer outstanding opportunities for solitude or a primitive and unconfined type of recreation? X Yes ___ No ___ NA
- 4. Does the area have supplemental values? X Yes ___ No ___ NA

Conclusion (Check One):

_____ The area- or a portion of the area- has wilderness character:
(items 1, 2 and 3 must be checked "yes").

X The area does not have wilderness character: *(any of items 1, 2 and 3 are checked "no").*

Prepared by (Member Names and Titles):



Share Garside: Outdoor Recreation Planner, Lakeview Resource Area

9/23/20

Date

Approved by:

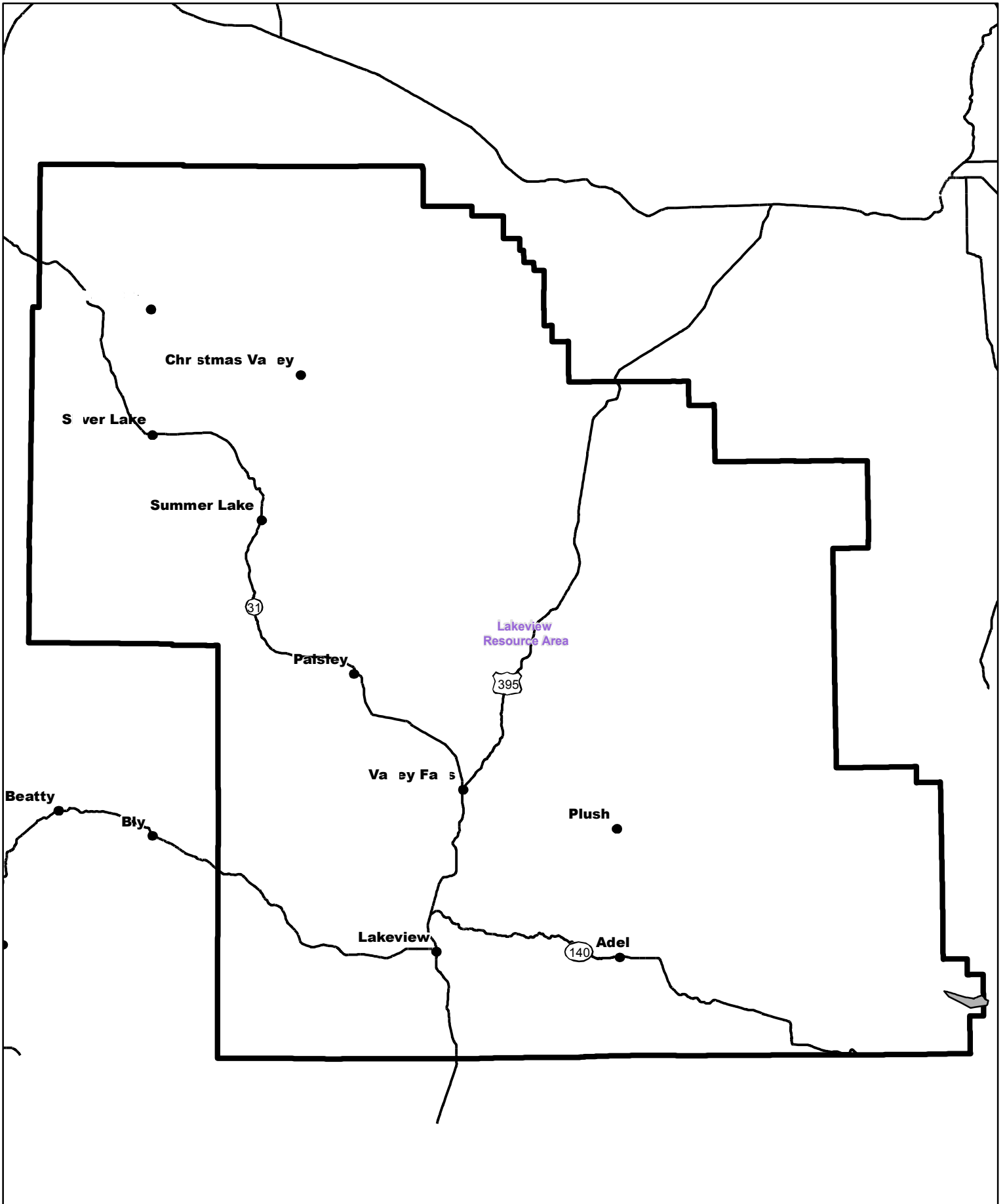



Jami Ludwig
Field Manager, Lakeview Resource Area

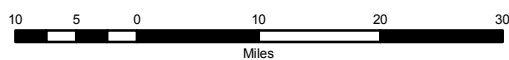
10/14/20


Date

This form documents information that constitutes an inventory finding on wilderness characteristics. It does not represent a formal land use allocation or a final agency decision subject to administrative remedies under 43 CFR parts either 4 or 1610.5-2.

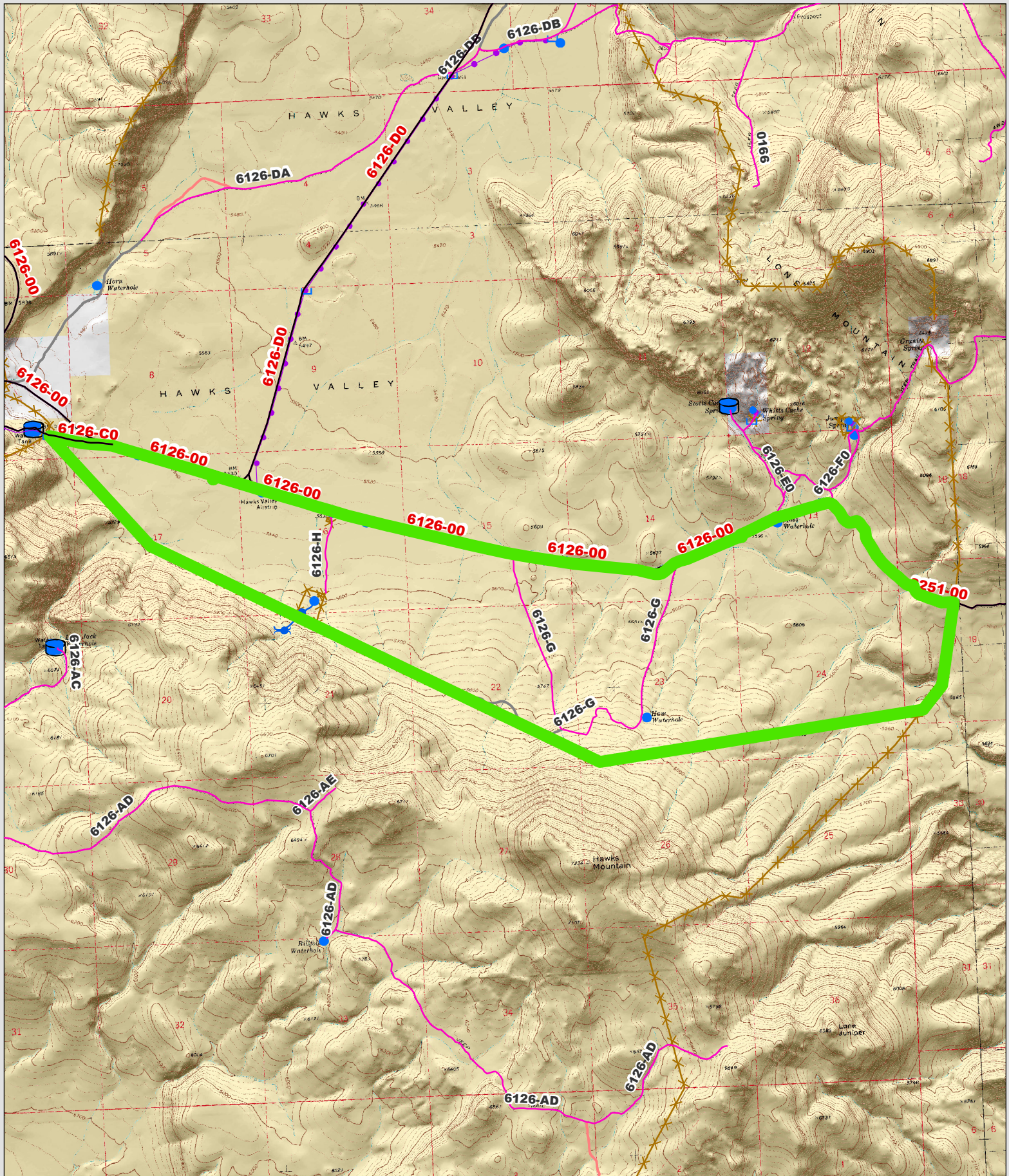


 Wilderness Character Inventory Unit



 No warranty is made by the Bureau of Land Management as to the accuracy, reliability, or completeness of these data for individual or aggregate use with other data. Original data were compiled from various sources. This information may not meet National Map Accuracy Standards. This product was developed through digital means and may be updated without notification.

Wilderness Character Inventory Unit: Hawk Mountain Northeast Addition



Ownership

- Bureau of Land Management
- U.S. Forest Service
- State
- Private/Unknown

Roads/Trails

- Motorized Routes
- Highways
- Reclaiming Routes
- Interim Routes

Pipelines and Ditches

- Ditch
- Water Pipeline
- Guzzler
- Fences

Water Developments

- Dam
- Reservoir
- Spring Development
- Trough
- Water Diversion

Water Developments

- Water Tank
- Waterhole
- Well - Water

1 0.5 0 1 Miles

No warranty is made by the Bureau of Land Management as to the accuracy, reliability, or completeness of these data for individual or aggregate use with other data. Original data were compiled from various sources. This information may not meet National Map Accuracy Standards. This product was developed through digital means and may be updated without notification.