

Year: 2018

Inventory Unit Number/Name: OR-015-158/ Guano Rim*

FORM 1

**DOCUMENTATION OF BLM WILDERNESS INVENTORY
FINDINGS ON RECORD**

1. Is there existing BLM wilderness inventory information on all or part of this area?

No _____ Yes X (if more than one unit is within the area, list the names/numbers of those units):

a) **Inventory Sources:** Wilderness Inventory – Final Intensive Inventory Decisions; USDI BLM - Oregon and Washington, November 1980.

b) **Inventory Unit Number(s)/ Name(s):** 1-158/ Breezy

c) **Map Name(s)/Number(s):** Intensive Wilderness Inventory - Final Decisions; USDI BLM - Oregon, November 1980.

d) **BLM District(s)/Field Office(s):** Lakeview District, Lakeview Resource Area.

*Note: Unit name was changed to better reflect values and features found within the unit, and to reduce confusion of similarly named inventory units.

2. BLM Inventory Findings on Record:

Existing inventory information regarding wilderness characteristics (if more than one BLM inventory unit is associated with the area, list each unit and answer each question individually for each inventory unit):

Unit #	Size (historic acres)	Natural Condition? Y/N	Outstanding Solitude? Y/N	Outstanding Primitive & Unconfined Recreation? Y/N	Supplemental Values? Y/N
1-158	6,240	N	N	N	N
1-158A*	4,156	Y	N	Y	Y
1-158B*	631	Y	N	Y	Y

* The inventory of this unit was updated in 2009. However, due to a State Office-sponsored Wilderness Inventory Consistency Evaluation and subsequent guidance, the 2009 inventory analysis and findings are being replaced by this current 2018 inventory review. Documentation of the 2009 inventory can be found in the wilderness inventory project record.

Summarize any known primary reasons for prior inventory findings listed in this table:

The unit formed a very narrow strip between the Nevada state line and Oregon Highway 140. The upland portion of the unit was a sage flat. Guano Rim was located on the west side of the unit. A portion of Stateline Canyon was in the central portion of the unit. The unit contained one “way” on the southwest below Daugherty Slide and a “way” on the Oregon side of a fence along the state boundary. The fence line was visible from the majority of the unit. The unit was dominated by the imprints of man's work because of its small size, narrow shape and the proximity of the boundary road to the fence. The unit did not meet the naturalness criteria. With its extremely narrow shape, flat terrain and the lack of adequate screening, the unit offered little opportunity for solitude. One could not find solitude in the unit as any location was visible from some point along the northern boundary. The unit offered opportunity for hunting, but very little opportunity for any other form of primitive recreation. This unit was adjacent to a proposed wilderness area on the Charles Sheldon Antelope Refuge. The unit was exposed from the Refuge fence to the north boundary and contained flatland which detracted from any potential value as an addition to the refuge proposal.

FORM 2

**DOCUMENTATION OF CURRENT WILDERNESS INVENTORY
CONDITIONS**

Unit Number/Name: OR-015-158/ Guano Rim

(1) Is the unit of sufficient size? Yes X No _____

Between 2008 and 2016, BLM staff conducted field inventory in the area as part of a process to update its road and wilderness inventories and to gather additional information to supplement ONDA’s wilderness information. This fieldwork included photo documentation of the boundary and interior routes and a re-evaluation of wilderness characteristics for this area. Using both ONDA and BLM photos, field logs, and staff field knowledge, the BLM completed route analysis within the area in 2017.

The BLM determined that the inventory unit is bounded by a State Highway 140 right-of-way and two Oregon Department of Transportation right-of-ways for mineral pits to the north; BLM interim numbered roads 0157, 0157-A, 0157-B, 0156, and U.S. Fish and Wildlife Service (USFWS) lands to the west; and USFWS lands to the south.

Thus, based on these boundary and road determinations, the BLM found the Guano Rim inventory unit does not meet the minimum size criteria at approximately 4,787 acres of BLM-administered lands. However, it does meet one of the exceptions to the

size criteria; namely, that it is contiguous with USFWS's Round Mountain WSA (33,100 acres) located to the south.

Additional background on the process that the BLM followed during this evaluation is contained in the document, *Wilderness Inventory Maintenance Process for the Lakeview Resource Area, BLM* and in the *Route Analysis Forms*. Both documents can be found in the wilderness inventory file.

DESCRIPTION OF CURRENT CONDITIONS:

This unit is located approximately 24 miles southeast of Adel, Oregon, and is just north of the Oregon-Nevada border. The unit is approximately 9 miles long by 1 mile wide. The unit ranges in elevation from 5,210 ft. to 6,300 feet. Topographically the unit is dominated by Guano Rim (1,100 ft. high, 1.5 miles) and highly eroded, rocky, State Line Canyon (100 - 900 ft. deep, 6.5 total miles) in the west. The remaining area to the east is comprised of rolling hills and small sections of drainages. Vegetatively, the unit is comprised of sagebrush, rabbit brush, grass and a few scattered juniper trees.

Immediately south of the Breezy area lies the U.S. Fish and Wildlife Service's (USFWS) Round Mountain and Horse Heaven Wilderness Study Areas on the Sheldon National Wildlife Refuge in northern Nevada. The USFWS recommended combining these 2 units into a single 33,100-acre Round Mountain WSA in 1974 and is currently managing this area for wilderness character.

(2) Is the unit in a natural condition? Yes No N/A

In 1980, historic Unit-1-158 contained one "way" on the southwest below Daugherty Slide and another "way" on the Oregon side of a fence along the state boundary. The fence line was visible from the majority of the unit. The unit was dominated by the imprints of man's work because of its small size, narrow shape and the proximity of the boundary road to the fence. The unit did not meet the naturalness criteria.

USFWS's Round Mountain WSA, immediately to the south, was found to contain some man-made intrusions in 1974 including "jeep trails", fencing, mining prospect sites, and water developments, but overall the area met the naturalness criteria.

The unit currently contains the following man-made developments/disturbances: 6 miles of motorized routes, 2 waterholes, 1 wildlife guzzler.

Presently, almost 4 decades after the original inventory, these developments are weathered and grown over with herbaceous grasses, sagebrush, and rabbit brush. As a result, developments now fade into the background of the unit and are largely only noticeable at a close distance (1/4th mile or less) and are thus substantially unnoticeable from further distances. The topography of the area also plays a large role in screening disturbances and man-made developments. Furthermore, many of the

disturbances are located near the perimeter of the unit and, as such, have a small area of influence.

Based on a review of all the available information including photos, staff knowledge, and field review, the BLM concluded, based on its own merits, that Guano Rim unit appears in natural condition where the imprint of man are substantially unnoticeable. Furthermore, since the unit is now contiguous with the Round Mountain WSA, the Guano Rim unit must be analyzed in the context of these now shared wilderness values. After considering wilderness values offered by both units, the BLM determined that the Guano Rim unit and the WSA contribute mutually additive effects to the natural condition of both units as a whole. Thus, the area was found to be in a natural condition primarily affected by the forces of nature.

(3) Does the unit (or the remainder of the unit if a portion has been excluded due to unnaturalness and the remainder is of sufficient size) **have outstanding opportunities for solitude?** Yes No N/A

In 1980, historic Unit-1-158 was found to lack adequate screening as the unit offered little opportunity for solitude due to its narrow shape, flat terrain, and close proximity to the highway.

In 1974, the USFWS did not evaluate opportunities for solitude, per se, within the Round Mountain WSA, but did conclude that overall, the area met the wilderness criteria and recommended the WSA for wilderness designation. It is unclear exactly how the USFWS evaluated solitude opportunities during their previous inventory. Though, based on size (33,100 acres) and topography, the BLM assumes outstanding opportunities for solitude are present within the Round Mountain WSA due to the numerous deep arms of State Line Canyon and the Horse Mountain formation.

The BLM determined that there are several opportunities for solitude across the unit due to topographic screening. The unit is approximately 9 miles long by 1 miles wide. The unit ranges in elevation from 5,210 ft. to 6,300 feet. Topographically the unit is dominated by Guano Rim (1,100 ft. high, 1.5 miles) and highly eroded, rocky, State Line Canyon (100 - 900 ft. deep, 6.5 total miles) in the west. The remaining area to the east is comprised of rolling hills and small sections of drainages.

These opportunities would be enhanced by the additive effect of outstanding opportunities for solitude present within the 33,100-acre Round Mountain WSA to the south and must be analyzed in the context of these now shared wilderness values.

Thus, for the reasons specified above and based on a review of all the available information including (BLM and citizen provided) photos, staff knowledge, and field review, the BLM concluded that one would be able to avoid the sights and sounds of others within Guano Rim inventory unit due to the contiguous values of Round Mountain WSA.

(4) Does the unit (or the remainder of the unit if a portion has been excluded due to unnaturalness and the remainder is of sufficient size) have outstanding opportunities for primitive and unconfined recreation? Yes No N/A

In 1980, historic Unit-1-158 was found to offer some opportunities for hunting, and limited opportunities for other forms of primitive recreation.

In 1974, the USFWS did not evaluate opportunities for primitive recreation, per se, within the Round Mountain WSA, but did conclude that overall, the area met the wilderness criteria and recommended the WSA for wilderness designation. It is unclear exactly how the USFWS evaluated recreation opportunities during their previous inventory. Though, based on size (33,100 acres) and topography, the BLM assumes outstanding opportunities for solitude are present within the Round Mountain WSA due to the numerous deep arms of State Line Canyon and the Horse Mountain formation.

The BLM determined that the Guano Rim inventory unit on its own merit, provides limited opportunities for primitive and unconfined recreation, but ultimately lacks adequate size to provide outstanding opportunities. However, opportunities for recreation would be enhanced by the additive effect of outstanding primitive recreation opportunities present within the 33,100-acre Round Mountain WSA to the south and must be analyzed in the context of these now shared wilderness values.

Thus, for the reasons specified above and based on a review of all available information including (BLM and citizen provided) photos, staff knowledge, and field review, the BLM concluded that outstanding opportunities for primitive and unconfined recreation are present within the Guano Rim inventory unit due to the contiguous values of the Round Mountain WSA.

(5) Does the unit have supplemental values? Yes No N/A

The BLM found the unit to possess archaeological and geological values as well as the presence of mule deer, pronghorn antelope, California bighorn sheep, pygmy rabbit, white-tailed antelope squirrel, golden eagle, and sage-grouse habitat.

Summary of Findings and Conclusion

Unit Number and Name: OR-015-158/ Guano Rim

Summary Results of Analysis:

- 1. Does the area meet the size requirements? X Yes No
- 2. Does the area appear to be natural? X Yes No
- 3. Does the area offer outstanding opportunities for solitude or a primitive and unconfined type of recreation? X Yes No NA
- 4. Does the area have supplemental values? X Yes No NA

Conclusion (Check One):

- X The area- or a portion of the area- has wilderness character: *(items 1, 2 and 3 must be checked "yes")*.
- The area does not have wilderness character: *(any of items 1, 2 and 3 are checked "no")*.

Prepared by (Member Names and Titles):



Chris Bishop: Outdoor Recreation Planner

 6/4/18
Date


Jami Ludwig: Assistant Field Manager

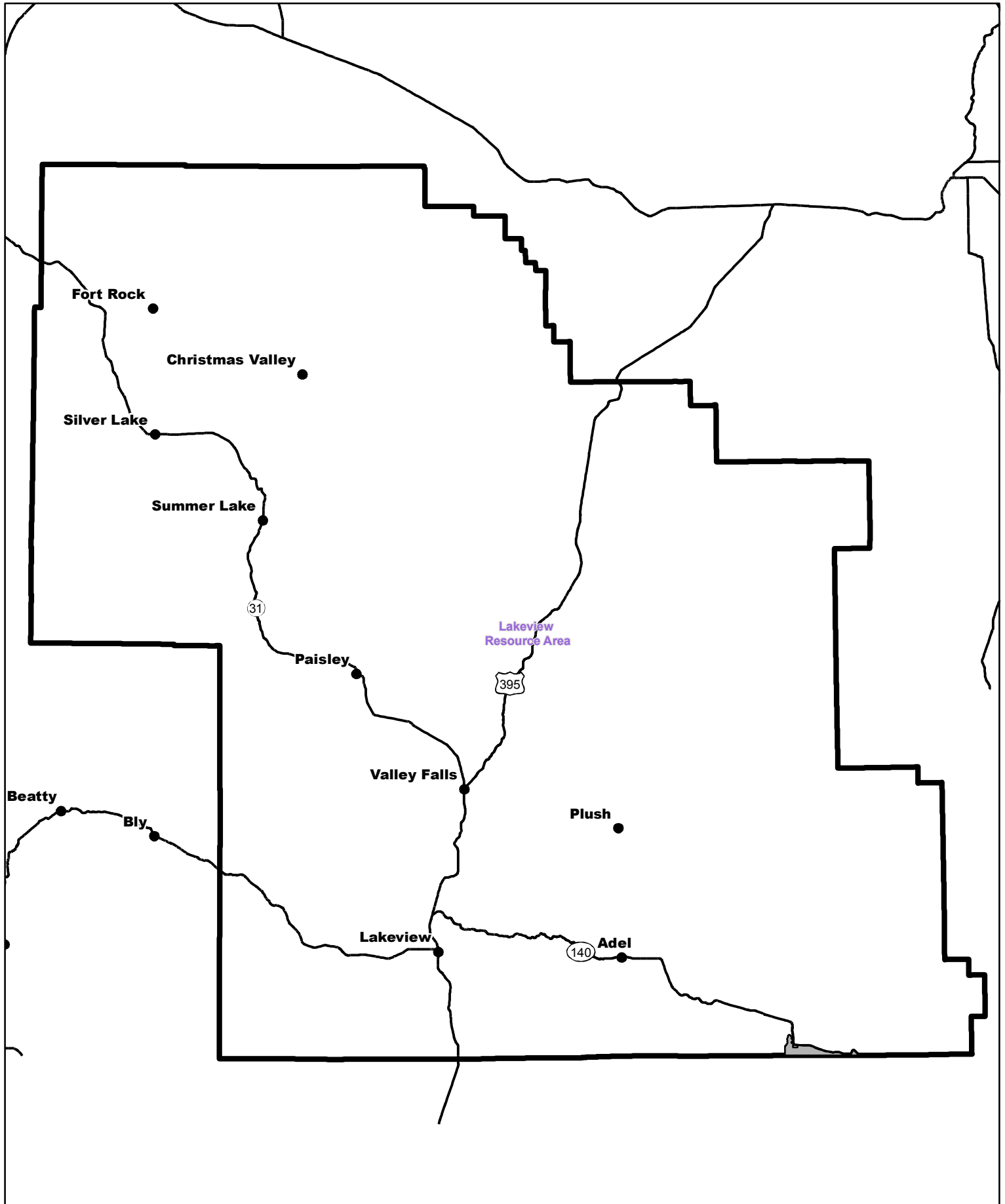
 6/4/18
Date


Approved by:

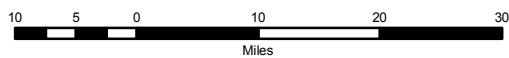

J. Todd Forbes
Field Manager


 6/4/18
Date

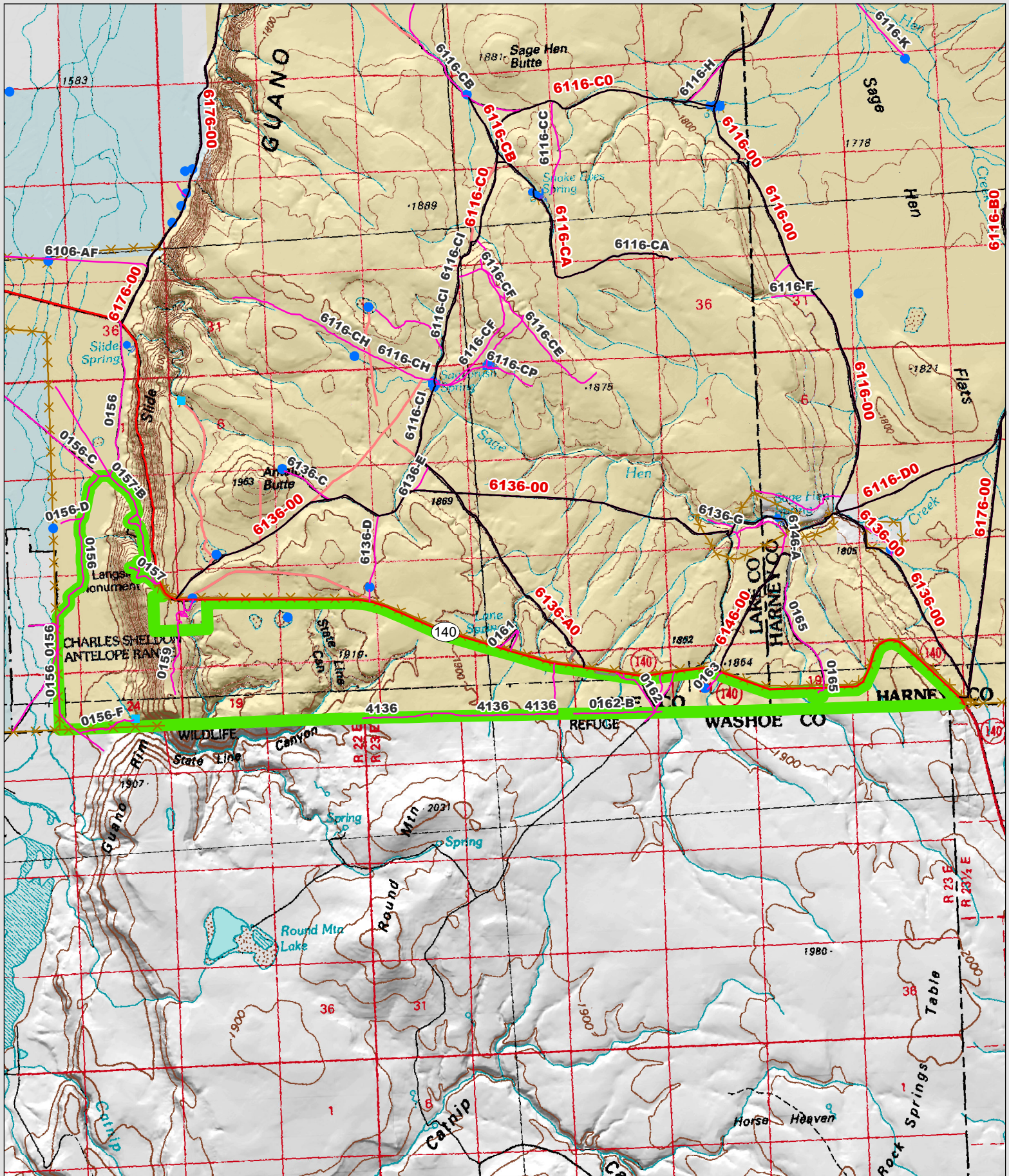
This form documents information that constitutes an inventory finding on wilderness characteristics. It does not represent a formal land use allocation or a final agency decision subject to administrative remedies under 43 CFR parts either 4 or 1610.5-2.



 Wilderness Character Inventory Unit



 No warranty is made by the Bureau of Land Management as to the accuracy, reliability, or completeness of these data for individual or aggregate use with other data. Original data were compiled from various sources. This information may not meet National Map Accuracy Standards. This product was developed through digital means and may be updated without notification.



Wilderness Character Inventory Unit	Motorized Routes	Ditch	Dam	Water Tank
Ownership	Highways	Water Pipeline	Reservoir	Waterhole
Bureau of Land Management	Reclaiming Routes	Guzzler	Spring Development	Well - Water
U.S. Forest Service	Interim Routes	Trough	Water Diversion	
Private/Unknown	Fences			

1.5 0.75 0 1.5 Miles

No warranty is made by the Bureau of Land Management as to the accuracy, reliability, or completeness of these data for individual or aggregate use with other data. Original data were compiled from various sources. This information may not meet National Map Accuracy Standards. This product was developed through digital means and may be updated without notification.