

Year: 2018

Inventory Unit Number/Name: OR-015-023/ Fossil Lake

FORM 1

DOCUMENTATION OF BLM WILDERNESS INVENTORY FINDINGS ON RECORD

1. Is there existing BLM wilderness inventory information on all or part of this area?

No _____ Yes X (if more than one unit is within the area, list the names/numbers of those units):

a) **Inventory Source:** BLM Wilderness Inventory files for Pacific Power and Light Company (PP&L) Transmission Line: PP&L Roadless Area Inventory Files (1977).

b) **Inventory Unit Number(s)/Name(s):** OR-010-01-10 (1-23)/ Fossil Lake

c) **Map Name(s)/Number(s):** Wilderness Review – Initial Inventory: Final Decision on Public Lands Obviously Lacking Wilderness Characteristics and Announcement of Public Lands to be Intensively Inventoried for Wilderness Characteristics; USDI BLM - Oregon and Washington, August 1979.

d) **BLM District(s)/Field Office(s):** Lakeview District, Lakeview Resource Area.

2. BLM Inventory Findings on Record:

Existing inventory information regarding wilderness characteristics (if more than one BLM inventory unit is associated with the area, list each unit and answer each question individually for each inventory unit):

Unit #	Size (historic acres)	Natural Condition? Y/N	Outstanding Solitude? Y/N	Outstanding Primitive & Unconfined Recreation? Y/N	Supplemental Values? Y/N
1-23	7,700	N	N/A	N/A	N/A
1-23*	5,052	N	N/A	N/A	N/A

*The inventory of this unit was updated in 2011. However, due to a State Office-sponsored Wilderness Inventory Consistency Evaluation and subsequent guidance, the 2011 inventory analysis and findings are being replaced by this current 2018 inventory review. Documentation of the 2011 inventory can be found in the wilderness inventory project record.

Summarize any known primary reasons for prior inventory findings listed in this table:

In 1977/78 historic Unit 1-23 was described as a flat valley bottom with some 15 foot sand dunes in the northern portion. Vegetation was dominated by salt desert shrubs. Internal intrusions to naturalness included motorcycle race course use, and a few “ways.” Outside intrusions to naturalness included a large power line crossing seen from the entire area, a gravel county road to the south. Overall the unit was found to be unnatural. Additionally, outstanding opportunities for solitude or primitive and unconfined recreation were not found to be present.

FORM 2

**DOCUMENTATION OF CURRENT WILDERNESS INVENTORY
CONDITIONS**

Unit Number/Name: OR-015-023/ Fossil Lake

(1) Is the unit of sufficient size? Yes X No _____

Between 2007 and 2016, BLM staff conducted field inventory in the area as part of a process to update its road and wilderness inventories and to gather additional information to supplement ONDA’s wilderness information. This fieldwork included photo documentation of the boundary and interior routes and a re-evaluation of wilderness characteristics for this area. Using both ONDA and BLM photos, field logs, and staff field knowledge, the BLM completed route analysis within the area in 2017.

The BLM determined that the inventory unit is bounded by BLM interim numbered road 3102-00, a Bonneville Power Administration power line right-of-way, and private lands to the east; a right-of-way for County Road 5-14 to the south; private lands to the west; and a residential power line right-of-way to the north.

Thus, based on these boundary and road determinations, the BLM found the Fossil Lake inventory unit to exceed the minimum size criteria at approximately 5,110 acres of BLM-administered lands.

Additional background on the process the BLM followed during this evaluation is contained in the document, *Wilderness Inventory Maintenance Process for the Lakeview Resource Area, BLM* and in the *Route Analysis Forms*. Both documents can be found in the wilderness inventory file.

DESCRIPTION OF CURRENT CONDITIONS:

This unit is located approximately 11.5 miles east of Christmas Valley, Oregon. It is approximately 4 miles long by 2.5 miles wide. Topographically, the entirety of the unit is the flat lakebed of Christmas Lake Valley/ Buffalo Flat with small alkali openings among greasewood covered sand dunes (5-10 ft. high). Overall, the unit ranges in elevation from 4,300 to 4,310 feet.

(2) Is the unit in a natural condition? Yes No N/A

In 1977/78, historic Unit 1-23 was found to be in an unnatural state due primarily to outside influences. Internal impacts included motorcycle race course use, and a few “ways.”

The unit currently contains the following man-made developments/disturbances: 90 acres of chemical treatments, 2.5 mile of reclaiming routes, 0.25 miles of motorized routes.

Presently, almost 4 decades after the original inventory, these developments are weathered and grown over with herbaceous grasses and sagebrush. As a result, developments now fade into the background of the unit and are largely only noticeable at a close distance (1/4th mile or less) and are thus substantially unnoticeable from further distances. Furthermore, many of the disturbances are located near the perimeter of the unit and, as such, have a small area of influence.

Based on a review of all the available information including photos, staff knowledge, and field review, the BLM concluded that the unit appears in a natural condition where the imprints of man are substantially unnoticeable.

(3) Does the unit (or the remainder of the unit if a portion has been excluded due to unnaturalness and the remainder is of sufficient size) **have outstanding opportunities for solitude?** Yes No N/A

In 1977/78, historic Unit 1-23 was found to lack outstanding opportunities for solitude.

The BLM determined that opportunities for solitude within the Fossil Lake inventory unit are severely limited. Topographically, the entirety of the unit is the flat lakebed of Christmas Lake Valley/Buffalo Flat with small alkali openings among greasewood covered sand dunes (5-10 ft. high). Overall, the unit ranges in elevation from 4,300 to 4,310 feet. These opportunities are less than outstanding as the area’s characteristic landscape lacks vegetative screening and existing topographic screening is insufficient to effectively allow those recreating in the area to avoid the sights and sounds of others.

Thus, for the reasons specified above and based on a review of all the available information including (BLM and citizen provided) photos, staff knowledge, and field review, the BLM concluded the Fossil Lake inventory unit does not possess outstanding opportunities for solitude.

(4) Does the unit (or the remainder of the unit if a portion has been excluded due to unnaturalness and the remainder is of sufficient size) **have outstanding opportunities for primitive and unconfined recreation?** Yes No N/A

In 1977/78, historic Unit 1-23 was found to lack outstanding opportunities for primitive and unconfined recreation.

The BLM finds the unit offers limited opportunities for hiking, horseback riding, backpacking, camping, wildlife observation, exploration, scenery, photography, stargazing, trapping, and hunting. However, the BLM determined that the unit does not possess outstanding opportunities for primitive and unconfined recreation through either the diversity of recreational activities possible in the area or by the outstanding quality of one opportunity relative to opportunities found within the Lakeview Resource Area.

(5) Does the unit have supplemental values? Yes ___ No ___ N/A X

Supplemental values were not evaluated as the unit was determined to lack both outstanding opportunities for solitude and or primitive and unconfined recreation, and therefore does not meet the minimum wilderness criteria.

Summary of Findings and Conclusion

Unit Number/Name: OR-015-023/ Fossil Lake

Summary Results of Analysis:

- 1. Does the area meet the size requirements? X Yes No
- 2. Does the area appear to be natural? X Yes No
- 3. Does the area offer outstanding opportunities for solitude or a primitive and unconfined type of recreation? Yes X No NA
- 4. Does the area have supplemental values? Yes No X NA

Conclusion (Check One):

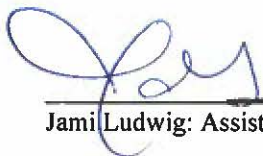
 The area- or a portion of the area- has wilderness character:
(items 1, 2 and 3 must be checked "yes").

 X The area does not have wilderness character: *(any of items 1, 2 and 3 are checked "no").*

Prepared by (Member Names and Titles):

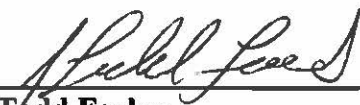

Chris Bishop, Outdoor Recreation Planner

11/1/2018
Date


Jami Ludwig, Assistant Field Manager

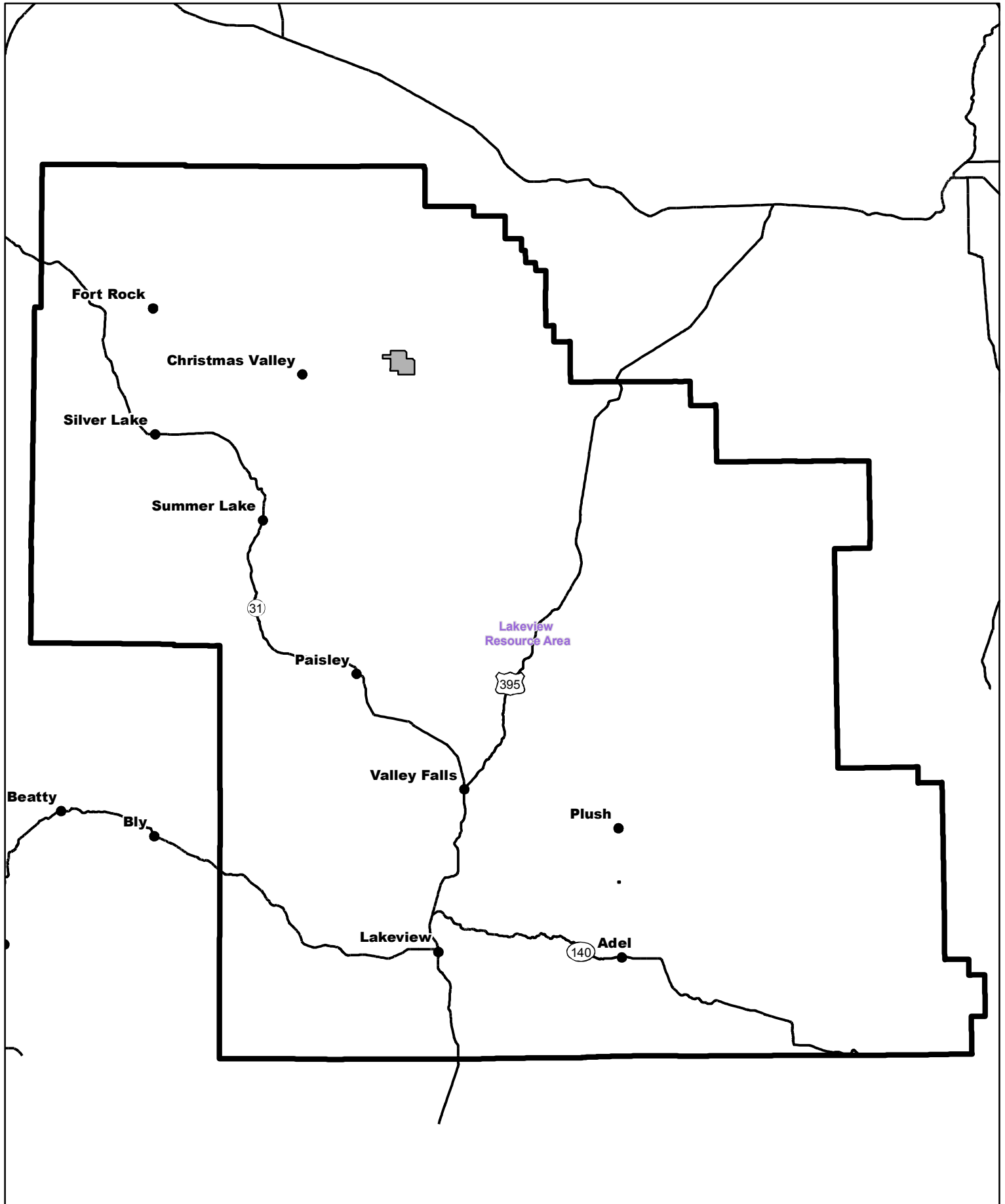
11/1/18
Date


Approved by:

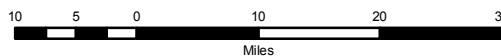

J. Todd Forbes
Field Manager


11/1/18
Date

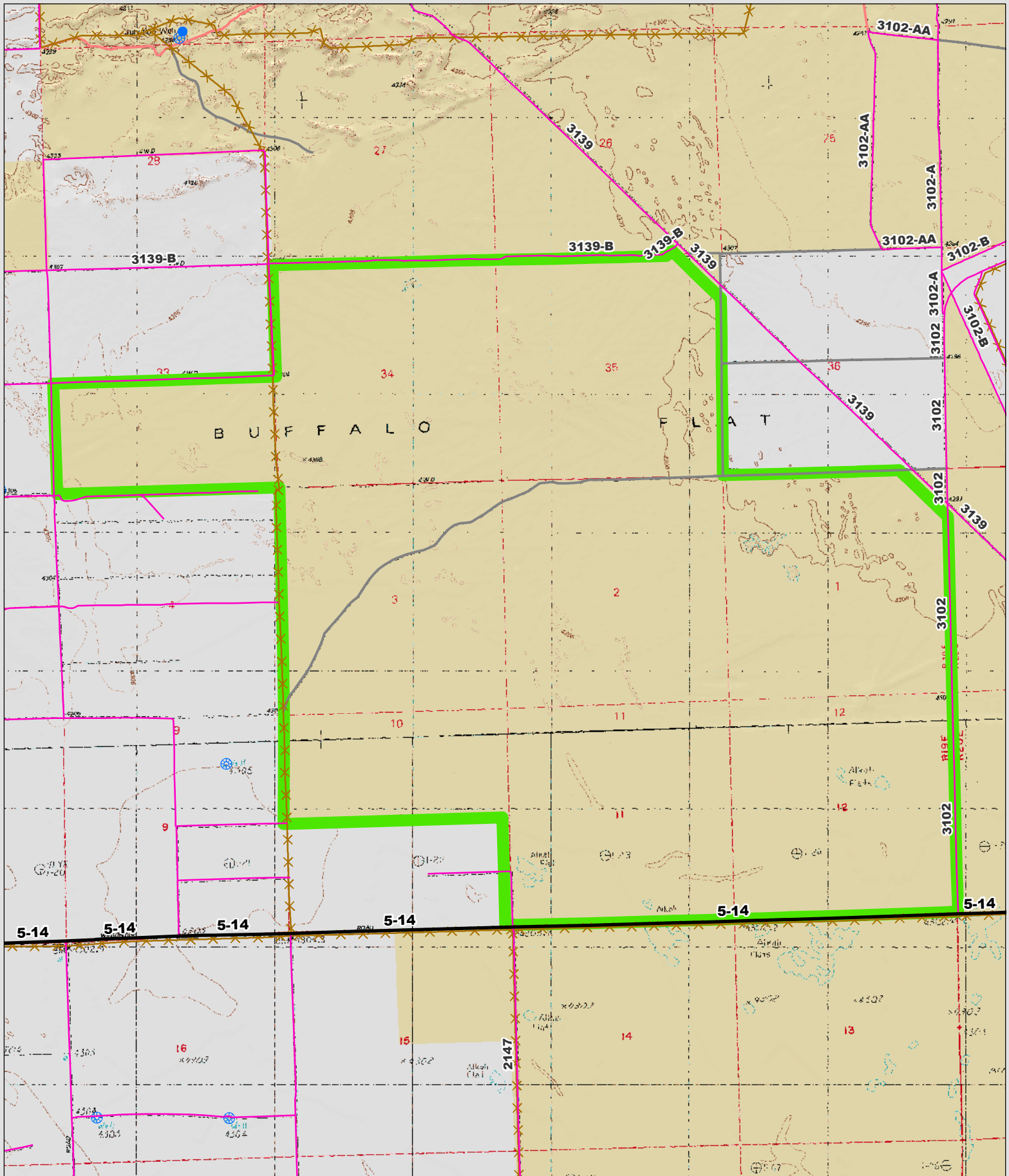
This form documents information that constitutes an inventory finding on wilderness characteristics. It does not represent a formal land use allocation or a final agency decision subject to administrative remedies under 43 CFR parts either 4 or 1610.5-2.

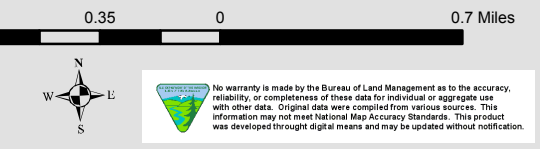


 Wilderness Character Inventory Unit



 No warranty is made by the Bureau of Land Management as to the accuracy, reliability, or completeness of these data for individual or aggregate use with other data. Original data were compiled from various sources. This information may not meet National Map Accuracy Standards. This product was developed through digital means and may be updated without notification.



<p>Wilderness Character Inventory Unit</p> <p>Ownership</p> <ul style="list-style-type: none"> Bureau of Land Management U.S. Forest Service State Private/Unknown 	<p>Roads/Trails</p> <ul style="list-style-type: none"> Motorized Routes Highways Reclaiming Routes Interim Routes 	<p>Pipelines and Ditches</p> <ul style="list-style-type: none"> Ditch Water Pipeline Guzzler Fences 	<p>Water Developments</p> <ul style="list-style-type: none"> Dam Reservoir Spring Development Trough Water Diversion 	<ul style="list-style-type: none"> Water Tank Waterhole Well - Water 	<p>0.7 0.35 0 0.7 Miles</p>  <p style="font-size: small;">No warranty is made by the Bureau of Land Management as to the accuracy, reliability, or completeness of these data for individual or aggregate use with other data. Original data were compiled from various sources. This information may not meet National Map Accuracy Standards. This product was developed through digital means and may be updated without notification.</p>
--	---	---	---	--	---