

Year: 2018

Inventory Unit Number/Name: OR-015-106/ Flint Hills

FORM 1

**DOCUMENTATION OF BLM WILDERNESS INVENTORY
FINDINGS ON RECORD**

1. Is there existing BLM wilderness inventory information on all or part of this area?

No Yes (if more than one unit is within the area, list the names/numbers of those units):

a) Inventory Source:

- a. Wilderness – Proposed Initial Inventory: Roadless Areas and Islands Which Clearly Do Not Have Wilderness Characteristics; USDI BLM - Oregon and Washington, April 1979.
- b. Wilderness Review – Initial Inventory: Final Decision on Public Lands Obviously Lacking Wilderness Characteristics and Announcement of Public Lands to be Intensively Inventoried for Wilderness Characteristics; USDI BLM - Oregon and Washington, August 1979.
- c. Wilderness Inventory – Final Intensive Inventory Decisions; USDI BLM - Oregon and Washington, November 1980.

b) Inventory Unit Number(s)/ Name(s): 1-106/ Flint Hills; 1-107/ Rabbit Basin

c) Map Number(s)/ Name(s):

- a. Proposed Initial Inventory: Roadless Areas and Islands Which Do Not Have Wilderness Characteristics; USDI BLM - Oregon, April 1979.
- b. Final Decision - Initial Wilderness Inventory: Public Lands and Islands Which Do Not Have Wilderness Characteristics and Units To Be Intensively Inventoried; USDI BLM - Oregon, August 1979.
- c. Intensive Wilderness Inventory - Final Decisions; USDI BLM - Oregon, November 1980.

d) BLM District(s)/Field Office(s): Lakeview District, Lakeview Resource Area.

2. BLM Inventory Findings on Record

Existing inventory information regarding wilderness characteristics (if more than one BLM inventory unit is associated with the area, list each unit/acreage and answer each question individually for each inventory unit):

Unit#	Size (historic acres)	Natural Condition? Y/N	Outstanding Solitude? Y/N	Outstanding Primitive & Unconfined Recreation? Y/N	Supplemental Values? Y/N
1-106	23,840	N	N	N	N/A
1-107	10,900	N	N	N	N/A
1-106*	20,642	Y	N	N	N/A
1-107 *	12,094	N	N/A	N/A	N/A

* The inventory of this unit was updated in 2012. However, due to a State Office-sponsored Wilderness Inventory Consistency Evaluation and subsequent guidance, the 2012 inventory analysis and findings are being replaced by this current 2018 inventory review. Documentation of the 2012 inventory can be found in the wilderness inventory project record.

Summarize any known primary reasons for prior inventory findings listed in this table:

Historic Unit 1-106 was described as containing Flint Hills and Flint Ridge, major topographic features rising 300 feet above the surrounding land, in the north portion of the unit. The remaining portion of the unit contained low, rolling hills and basins with sagebrush cover. There were eight “ways” and four small lakebed pits within the unit. These intrusions significantly impaired the naturalness of the unit. The majority of the unit had been severely affected by the works of man. The unit did not provide an outstanding opportunity for solitude. Because of the lack of vegetative and topographic screening, one could not avoid the sights and sounds of others. There was limited potential for hiking and hunting in the unit. However, outstanding values for primitive and unconfined recreation did not exist within the unit. The unit had potential for archaeological values but none were documented.

Historic Unit 1-107 was found to clearly and obviously lack wilderness character. The unit was eliminated from the intensive inventory phase because the unit had received heavy off-road vehicle use and numerous disturbances from mining activities. The unit also lacked topographic and vegetative screening, and did not offer any outstanding opportunities for solitude or primitive and unconfined recreation.

FORM 2

DOCUMENTATION OF CURRENT WILDERNESS INVENTORY CONDITIONS

Unit Number/Name: OR-015-106/ Flint Hills

(1) Is the unit of sufficient size? Yes X No _____

Between 2008 and 2016, BLM staff conducted field inventory in the area as part of a process to update its road and wilderness inventories and to gather additional information to supplement ONDA’s wilderness information. This fieldwork included photo documentation of the boundary and interior routes and a re-evaluation of wilderness characteristics for this

area. Using both ONDA and BLM photos, field logs, and staff field knowledge, the BLM completed route analysis within the area in 2017.

The BLM determined that the inventory unit is bounded by BLM Road 6165-00 to the north; 6115-00 and private lands to the east; 8175-00 to the south; and a right-of-way for County Road 3-10 to the west. A portion of BLM Road 6115-B0 was cherry stemmed for access to private property. However, the portion of BLM Road 6115-B0 north of the private inholding was found to no longer meet the wilderness definition of a road. Thus, portions of historic inventory units (1-106 and 1-107) have been combined to form the new unit boundary. This evaluation focuses on these combined units and will hereby be referred to as the Flint Hills inventory unit. Additionally, approximately 344 acres of unnatural features (mining disturbances and motorized routes), were removed from this unit.

Thus, based on these boundary and road determinations, the BLM found the Flint Hills inventory unit to exceed the minimum size criteria at approximately 32,044 acres of BLM-administered lands.

Additional background on the process that the BLM followed during this evaluation is contained in the document, *Wilderness Inventory Maintenance Process for the Lakeview Resource Area, BLM* and in the *Route Analysis Forms*. Both documents can be found in the wilderness inventory file.

DESCRIPTION OF CURRENT CONDITIONS:

The unit is located about 20 miles north of Plush, Oregon. The unit is approximately 10 miles long by 9 miles wide. Topographically the unit is dominated by Flint Hills (1,000 ft. high) and Flint Ridge (250-400 ft. high and 8 miles long) in the western half of the unit. In addition to drainages sloping west from the Flint Hills, the unit contains half a dozen drainages running east into Rabbit Basin including Rabbit Creek, Foley Creek, and Sherlock Gulch (in total over 20 miles of drainages ranging from 10 to 200 ft. deep). The remainder of the unit is gently rolling hills and lakebed flats. Vegetation consists of grasses, rabbit brush, and sagebrush. A wildfire burned approximately 1,671 acres along the southern boundary of the unit in 1984.

(2) Is the unit in a natural condition? Yes No N/A

Historic Unit 1-106 contained eight “ways” and four small lakebed pits within the unit. These intrusions significantly impaired the naturalness of the unit. The majority of the unit had been severely affected by the works of man. Historic Unit 1-107 contained several vehicles “ways” and numerous disturbances from mining activities.

The unit currently contains the following man-made developments/disturbances: 2,960 acres of chemical treatments, 1,671 acres of wildfire, 1,101 acres of seeding, 11 miles of fence lines, 833 feet of ditch lines/canals, 40 miles of motorized routes/reclaiming routes, 9 waterholes, 4 reservoirs, and 2 dams.

Presently, almost 4 decades after the original inventory, these developments are weathered and grown over with herbaceous grasses and sagebrush. As a result, developments now fade into the background of the unit and are largely only noticeable at a close distance (1/4th mile or less) and are thus substantially unnoticeable from further distances. Furthermore, many of the disturbances are located near the perimeter of the unit and, as such, have a small area of influence. Areas that were seeded or allowed to revegetate naturally after fire, have been invaded by grasses and sagebrush and have returned to a natural, post fire, appearing condition.

Based on a review of all the available information including photos, staff knowledge, and field review, the BLM concluded that the unit appears in a natural condition where the imprints of man are substantially unnoticeable.

(3) Does the unit (or the remainder of the unit if a portion has been excluded due to unnaturalness and the remainder is of sufficient size) **have outstanding opportunities for solitude?** Yes No N/A

Both historic Unit 1-106 and 1-107 were found to lack outstanding opportunities for solitude due to limited vegetative and topographic screening. It was believed one could not avoid the sights and sounds of others within these units.

The BLM determined that there are several outstanding opportunities for solitude, particularly in the western half of the unit due to size and topographic screening. Topographically the unit is dominated by Flint Hills (1,000 ft. high) and Flint Ridge (250-400 ft. high and 8 miles long) in the western half of the unit. In addition to drainages sloping west from the Flint Hills, the unit contains half a dozen drainages running east into Rabbit Basin including Rabbit Creek, Foley Creek, and Sherlock Gulch (in total over 20 miles of drainages ranging from 10 to 200 ft. deep). The remainder of the unit is gently rolling hills and lakebed flats. Due to the above-described compartmentalized topography within the unit, one would easily be able to avoid the sights and sounds of others.

Thus, for the reasons specified above and based on a review of all the available information including (BLM and citizen provided) photos, staff knowledge, and field review, the BLM concluded the Flint Hills inventory unit possess outstanding opportunities for solitude.

(4) Does the unit (or the remainder of the unit if a portion has been excluded due to unnaturalness and the remainder is of sufficient size) **have outstanding opportunities for primitive and unconfined recreation?** Yes No N/A

Both historic Unit 1-106 and 107 were determined to possess limited potential for hiking and hunting in the unit. However, outstanding values for primitive and unconfined recreation did not exist within the unit.

The BLM finds the combination and diversity of hiking, horseback riding, backpacking, camping, rockhounding, wildlife observation, exploration, scenery, photography, stargazing, trapping, and hunting are exceptional. The BLM determined that options for exploration for

sunstones in the Rabbit Basin, as well as, hiking/horseback riding along Rabbit Creek, Foley Creek, Sherlock Gulch, Flint Ridge, and the Flint Hills represent unique opportunities for primitive and unconfined recreation.

(5) Does the unit have supplemental values? Yes No N/A

The BLM found the unit to possess archaeological and geological values, as well as, the presence of various bats, mule deer, pronghorn antelope, pygmy rabbit, golden eagle, and sage-grouse habitat.

Summary of Findings and Conclusion

Unit Number/Name: OR-015-106/ Flint Hills


Summary Results of Analysis:

- 1. Does the area meet the size requirements? X Yes No
- 2. Does the area appear to be natural? X Yes No
- 3. Does the area offer outstanding opportunities for solitude or a primitive and unconfined type of recreation? X Yes No NA
- 4. Does the area have supplemental values? X Yes No NA

Conclusion (Check One):

- X The area- or a portion of the area- has wilderness character: *(items 1, 2 and 3 must be checked "yes")*.
- The area does not have wilderness character: *(any of items 1, 2 and 3 are checked "no")*.

Prepared by (Member Names and Titles):



Chris Bishop: Outdoor Recreation Planner

2/26/2018
Date


Jami Ludwig: Assistant Field Manager

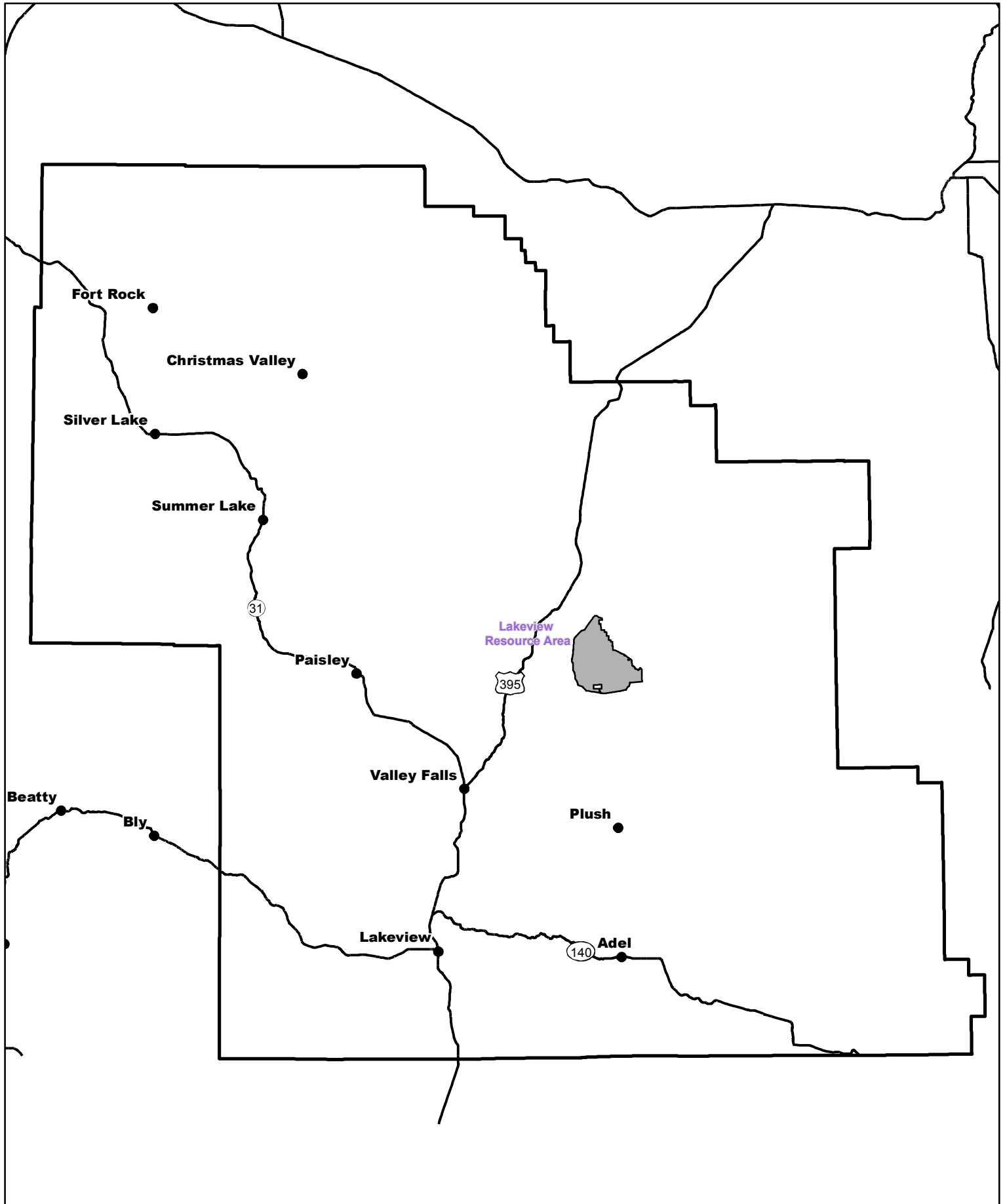
2/28/18
Date


Approved by:

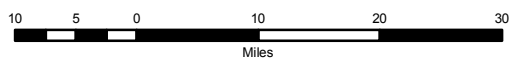

J. Todd Forbes
Field Manager


2/28/18
Date

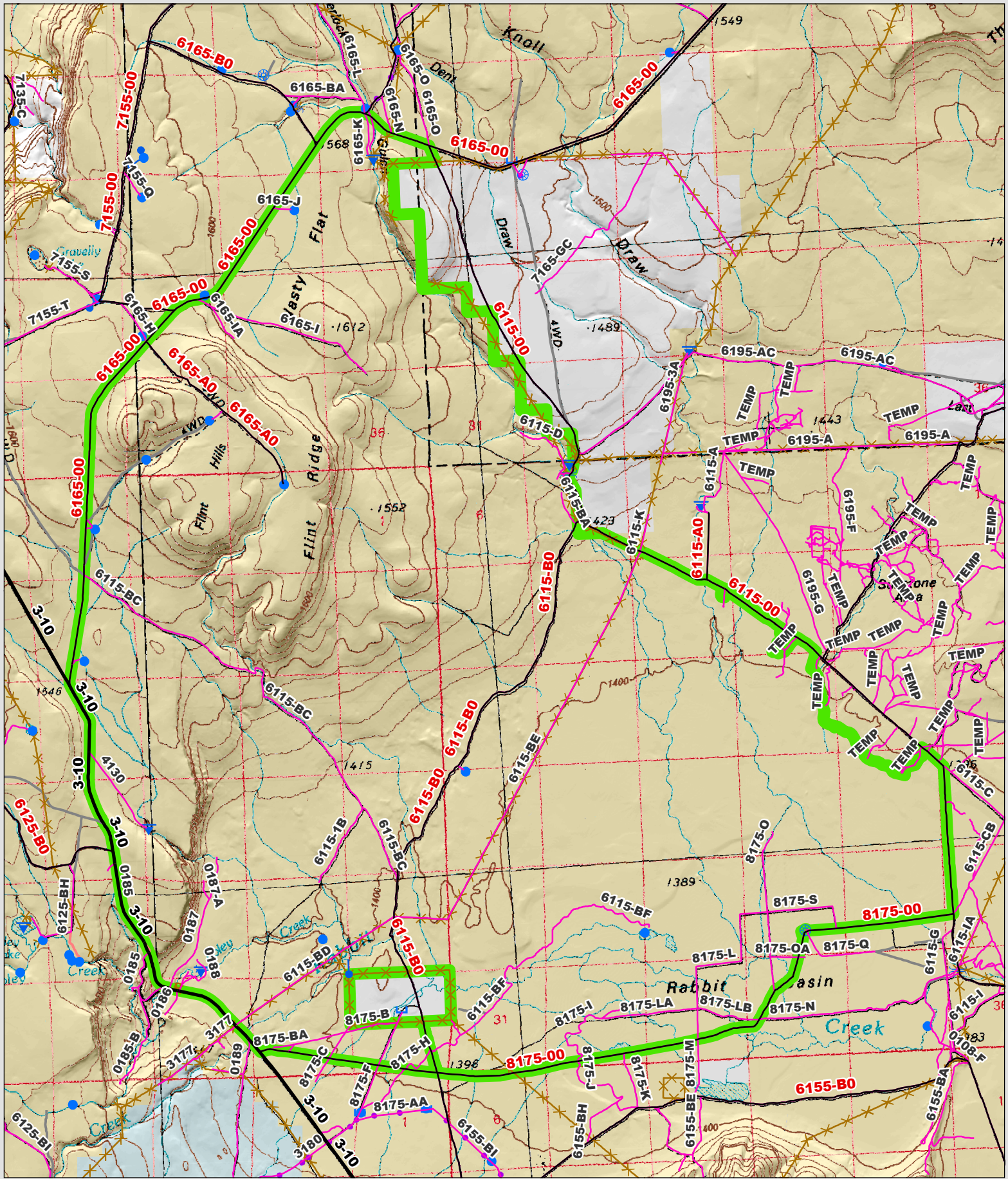
This form documents information that constitutes an inventory finding on wilderness characteristics. It does not represent a formal land use allocation or a final agency decision subject to administrative remedies under 43 CFR parts either 4 or 1610.5-2.

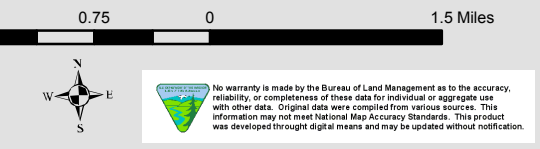


 Wilderness Character Inventory Unit



 No warranty is made by the Bureau of Land Management as to the accuracy, reliability, or completeness of these data for individual or aggregate use with other data. Original data were compiled from various sources. This information may not meet National Map Accuracy Standards. This product was developed through digital means and may be updated without notification.



<p>Wilderness Character Inventory Unit</p> <p>Ownership</p> <ul style="list-style-type: none"> Bureau of Land Management U.S. Forest Service Private/Unknown 	<p>Roads/Trails</p> <ul style="list-style-type: none"> Motorized Routes Highways Reclaiming Routes Interim Routes 	<p>Pipelines and Ditches</p> <ul style="list-style-type: none"> Ditch Water Pipeline Guzzler Fences 	<p>Water Developments</p> <ul style="list-style-type: none"> Dam Reservoir Spring Development Trough Water Diversion 	<ul style="list-style-type: none"> Water Tank Waterhole Well - Water 	<p>1.5 0.75 0 1.5 Miles</p>  <p>No warranty is made by the Bureau of Land Management as to the accuracy, reliability, or completeness of these data for individual or aggregate use with other data. Original data were compiled from various sources. This information may not meet National Map Accuracy Standards. This product was developed through digital means and may be updated without notification.</p>
--	---	--	--	--	---