

Year: 2018

Inventory Unit Number/Name: OR-015-0210/ Drake Creek

FORM 1

**DOCUMENTATION OF BLM WILDERNESS INVENTORY
FINDINGS ON RECORD**

1. Is there existing BLM wilderness inventory information on all or part of this area?

No _____ Yes X (if more than one unit is within the area, list the names/numbers of those units):

a) Inventory Source:

- a. BLM Wilderness Inventory files for Pacific Power and Light Company (PP&L) Transmission Line: PP&L Roadless Area Inventory Files (1977).
- b. Wilderness – Proposed Initial Inventory: Roadless Areas and Islands Which Clearly Do Not Have Wilderness Characteristics; USDI BLM - Oregon and Washington, April 1979.
- c. Wilderness Review – Initial Inventory: Final Decision on Public Lands Obviously Lacking Wilderness Characteristics and Announcement of Public Lands to be Intensively Inventoried for Wilderness Characteristics; USDI BLM - Oregon and Washington, August 1979.
- d. Wilderness Review – Intensive Inventory: Proposed Decision on the Intensive Wilderness Inventory of Selected Area; USDI BLM – Oregon, October 1979.
- e. Wilderness Review – Intensive Inventory: Final Decisions On 30 Selected Units in Southeast Oregon and Proposed Decisions On Other Intensively Inventoried Units; USDI BLM - Oregon and Washington, March 1980.
- f. Wilderness Inventory – Final Intensive Inventory Decisions; USDI BLM - Oregon and Washington, November 1980.

b) Inventory Unit Number(s)/ Name(s): N/A

c) Map Name(s)/Number(s):

- a. Proposed Initial Inventory: Roadless Areas and Islands Which Do Not Have Wilderness Characteristics; USDI BLM - Oregon, April 1979.
- b. Final Decision - Initial Wilderness Inventory: Public Lands and Islands Which Do Not Have Wilderness Characteristics and Units To Be Intensively Inventoried; USDI BLM - Oregon, August 1979.

- c. Proposed Decision: Intensive Wilderness Inventory of Selected Areas; USDI BLM - Oregon, October 1979.
- d. Intensive Wilderness Inventory: Final Decisions For 30 Selected Inventory Units and Proposed Decisions For Other Intensive Inventory Units; USDI BLM - Oregon, March 1980.
- e. Intensive Wilderness Inventory - Final Decisions; USDI BLM - Oregon, November 1980.

d) BLM District(s)/Field Office(s): Lakeview District, Lakeview Resource Area.

2. BLM Inventory Findings on Record:

Existing inventory information regarding wilderness characteristics (if more than one BLM inventory unit is associated with the area, list each unit and answer each question individually for each inventory unit):

Unit #	Size (historic acres)	Natural Condition? Y/N	Outstanding Solitude? Y/N	Outstanding Primitive & Unconfined Recreation? Y/N	Supplemental Values? Y/N
1-210*	5,040	N	N/A	N/A	N/A

* The inventory of this unit was updated in 2010. However, due to a State Office-sponsored Wilderness Inventory Consistency Evaluation and subsequent guidance, the 2010 inventory analysis and findings are being replaced by this current 2018 inventory review. Documentation of the 2010 inventory can be found in the wilderness inventory project record.

Summarize any known primary reasons for prior inventory findings listed in this table:

The original 1979/1980 inventory did not include information regarding wilderness characteristics of this unit, presumably because it did not meet the size requirements at that time.

FORM 2

DOCUMENTATION OF CURRENT WILDERNESS INVENTORY CONDITIONS

Unit Number/Name: OR-015-0210/ Drake Creek

(1) Is the unit of sufficient size? Yes X No _____

Between 2007 and 2016, BLM staff conducted field inventory in the area as part of a process to update its road and wilderness inventories and to gather additional information to supplement ONDA's wilderness information. This fieldwork included photo documentation of the boundary and interior routes and a re-evaluation of wilderness characteristics for this area. Using both ONDA and BLM photos, field logs, and staff field knowledge, the BLM completed route analysis within the area in 2017.

The BLM determined that the inventory unit is bounded private lands and two rights-of-ways to the south including State Highway 140 and several residential power lines; a Bonneville Power Administration (BPA) right-of-way for an access route along BLM Road 7142-00, on the southwest; private lands and a BPA right-of-way for a 500-KV power line on the east; BLM interim numbered road 8135-D0 to the north; and private lands to the west. Due to changes in boundary determinations (road, residential power lines, and BPA rights-of-ways buffer corrections), approximately 399 acres were added to the unit.

Thus, based on these boundary and road determinations, the BLM found the Drake Creek inventory unit to exceed the minimum size criteria at approximately 5,448 acres of BLM-administered lands.

Additional background on the process that the BLM followed during this evaluation is contained in the document, *Wilderness Inventory Maintenance Process for the Lakeview Resource Area, BLM* and in the *Route Analysis Forms*. Both documents can be found in the wilderness inventory file.

DESCRIPTION OF CURRENT CONDITIONS:

The inventory unit is located approximately 6 miles northwest of Adel, Oregon. The unit is approximately 6 miles long by 2.5 miles wide. Topography is dominated by Drake Creek Canyon (100 - 500 ft. deep), running approximately 4.5 miles, north to south, through the center of the inventory unit. The canyon is comprised of numerous broken rims, points, ridges, and 7 side drainages. The southern boundary is characterized by the northern rim of Deep Creek Canyon (320 ft. deep), running 3.5 miles west to east. While the southwest corner of the unit contains the lower 0.5 miles of Parsnip Creek/Canyon (225 ft. deep). The remainder of the unit, outside of the canyons, is relatively flat rolling terrain. Vegetatively, the canyons and the eastern half of the plateau is dominated by moderate to high-density stands of western juniper (aprx. 2,000 acres), with stands of ponderosa pine along creeks, and groupings of mountain mahogany among upper ridges and rims. The western half the plateau is largely covered with sagebrush, grasses, and scattered junipers, but also contains a few pockets of low to moderate-density (aprx. 250 acres) stands of juniper. Approximately 131 acres of juniper were lightly thinned in the upper reaches of Drakes Creek Canyon in 2005 and 965 acres were seeded in 1960 atop the plateau in the southwest portion of the unit.

(2) **Is the unit in a natural condition?** Yes No N/A

The unit currently contains the following man-made developments/disturbances: 965 acres of seeding, 377 acres of chemical treatments, 131 acres of fuel treatments (juniper thinning), 8.5 miles of motorized routes, 0.5 miles of cat lines, 9 miles of fence lines, 287 feet of pipelines, 2 reservoirs, 2 developed springs, and 3 troughs.

Presently, almost 4 decades after the majority of these developments were constructed, disturbances are weathered and grown over with herbaceous grasses, sagebrush, and juniper. As a result, developments now fade into the background of the unit and are largely only noticeable at a close distance (1/4th mile or less) and are thus substantially unnoticeable from further distances. The topography and vegetation of the area also plays a large role in screening disturbances and man-made developments. Furthermore, the majority of disturbances are located near the perimeter of the unit and, as such, have a small area of influence. Additionally, areas that were seeded or received fuel reduction projects have been invaded by rabbit bush, sagebrush, grasses, and scattered juniper, have returned to a natural appearing condition.

Based on a review of all the available information including photos, staff knowledge, and field review, the BLM concluded that the unit appears in a natural condition where the imprints of man are substantially unnoticeable.

(3) **Does the unit** (or the remainder of the unit if a portion has been excluded due to unnaturalness and the remainder is of sufficient size) **have outstanding opportunities for solitude?** Yes No N/A

The BLM determined that there are several outstanding opportunities for solitude across the unit due to both topographic and vegetative screening. Topography is dominated by Drake Creek Canyon (100 - 500 ft. deep), running approximately 4.5 miles, north to south, through the center of the inventory unit. The canyon is comprised of numerous broken rims, points, ridges, and 7 side drainages. The southern boundary is characterized by the northern rim of Deep Creek Canyon (320 ft. deep), running 3.5 miles west to east. While the southwest corner of the unit contains the lower 0.5 miles of Parsnip Creek/Canyon (225 ft. deep). Vegetatively, western juniper stands have greatly expanded in acreage, height, width, and density. Sufficient pockets of juniper for screening purposes can be found across the unit. Vegetatively, the canyons and the eastern half of the plateau is dominated by moderate to high-density stands of western juniper (aprx. 2,000 acres), with stands of ponderosa pine along creeks, and groupings of mountain mahogany among upper ridges and rims. The western half the plateau is largely covered with sagebrush, grasses, and scattered junipers, but also contains a few pockets of low to moderate-density (aprx. 250 acres) stands of juniper. Due to the above-described compartmentalized topography and vegetative conditions within the unit, one would easily be able to avoid the sights and sounds of others within the unit.

Thus, for the reasons specified above and based on a review of all the available information including (BLM and citizen provided) photos, staff knowledge, and field review, the BLM concluded the Drake Creek inventory unit possesses outstanding opportunities for solitude.

(4) Does the unit (or the remainder of the unit if a portion has been excluded due to unnaturalness and the remainder is of sufficient size) **have outstanding opportunities for primitive and unconfined recreation?** Yes No N/A

The BLM finds the combination and diversity of hiking, horseback riding, backpacking, camping, wildlife observation, exploration, scenery, photography, fishing, trapping, hunting, and stargazing, are exceptional. The BLM determined that hiking and fishing redband trout up Deep Creek, as well as, hiking atop Drake Creek and Deep Creek canyons represent unique opportunities for primitive and unconfined recreation.

(5) Does the unit have supplemental values? Yes No N/A

The BLM found the unit to possess archaeological and geological values as well as the presence of various mollusk species, bald eagle, redband trout, pronghorn antelope, mule deer, elk, California bighorn sheep, and sage-grouse habitat.

Summary of Findings and Conclusion

Unit Number and Name: OR-015-0210/ Drake Creek

Summary Results of Analysis:

- 1. Does the area meet the size requirements? X Yes No
- 2. Does the area appear to be natural? X Yes No
- 3. Does the area offer outstanding opportunities for solitude or a primitive and unconfined type of recreation? X Yes No NA
- 4. Does the area have supplemental values? X Yes No NA

Conclusion (Check One):

- X The area- or a portion of the area- has wilderness character: *(items 1, 2 and 3 must be checked "yes")*.
- The area does not have wilderness character: *(any of items 1, 2 and 3 are checked "no")*.

Prepared by (Member Names and Titles):



Chris Bishop: Outdoor Recreation Planner

6/4/18
Date


Jami Ludwig: Assistant Field Manager

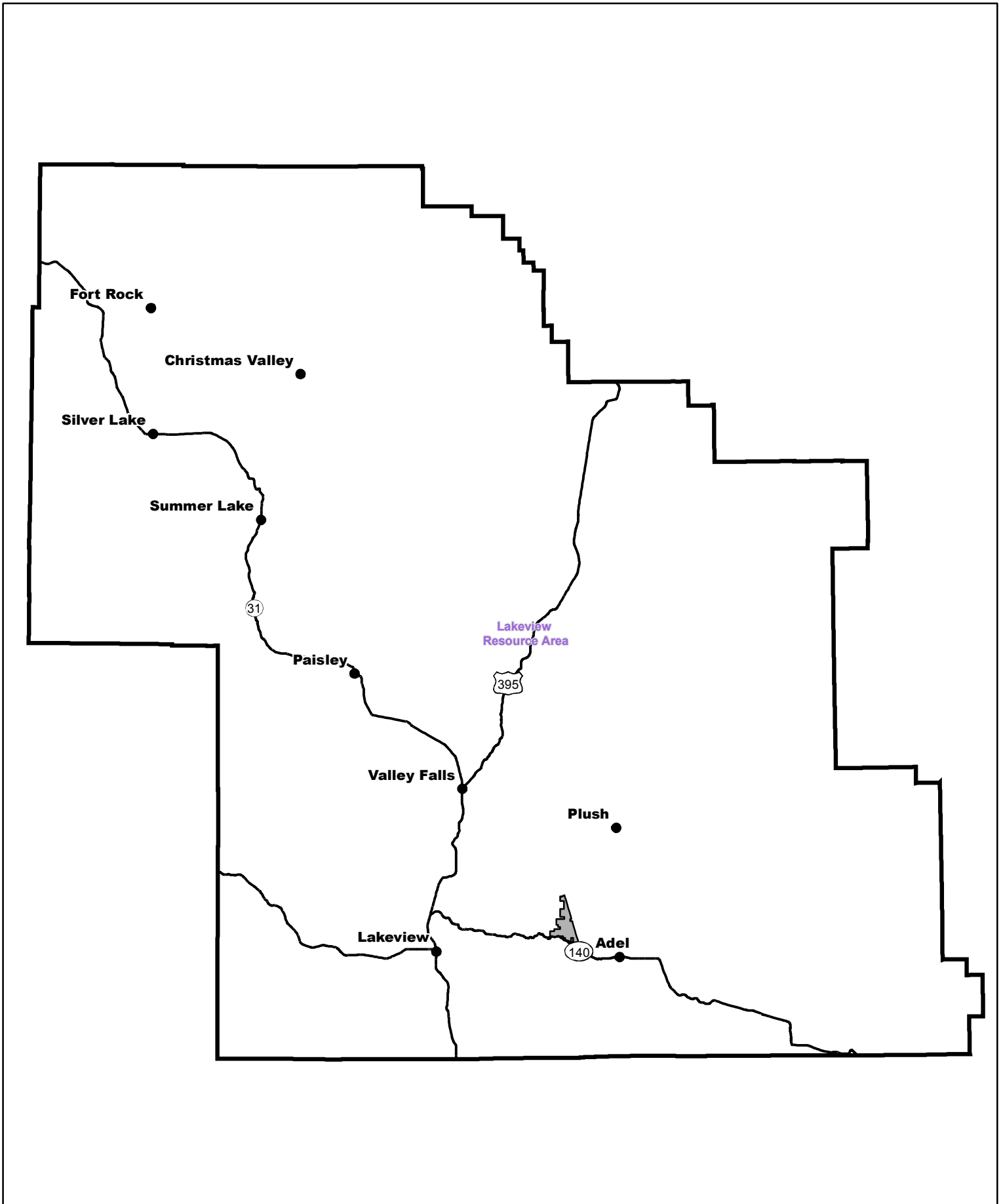
6/4/18
Date


Approved by:

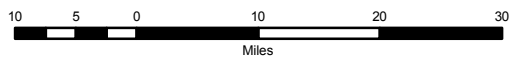

J. Todd Forbes
Field Manager


6/9/18
Date

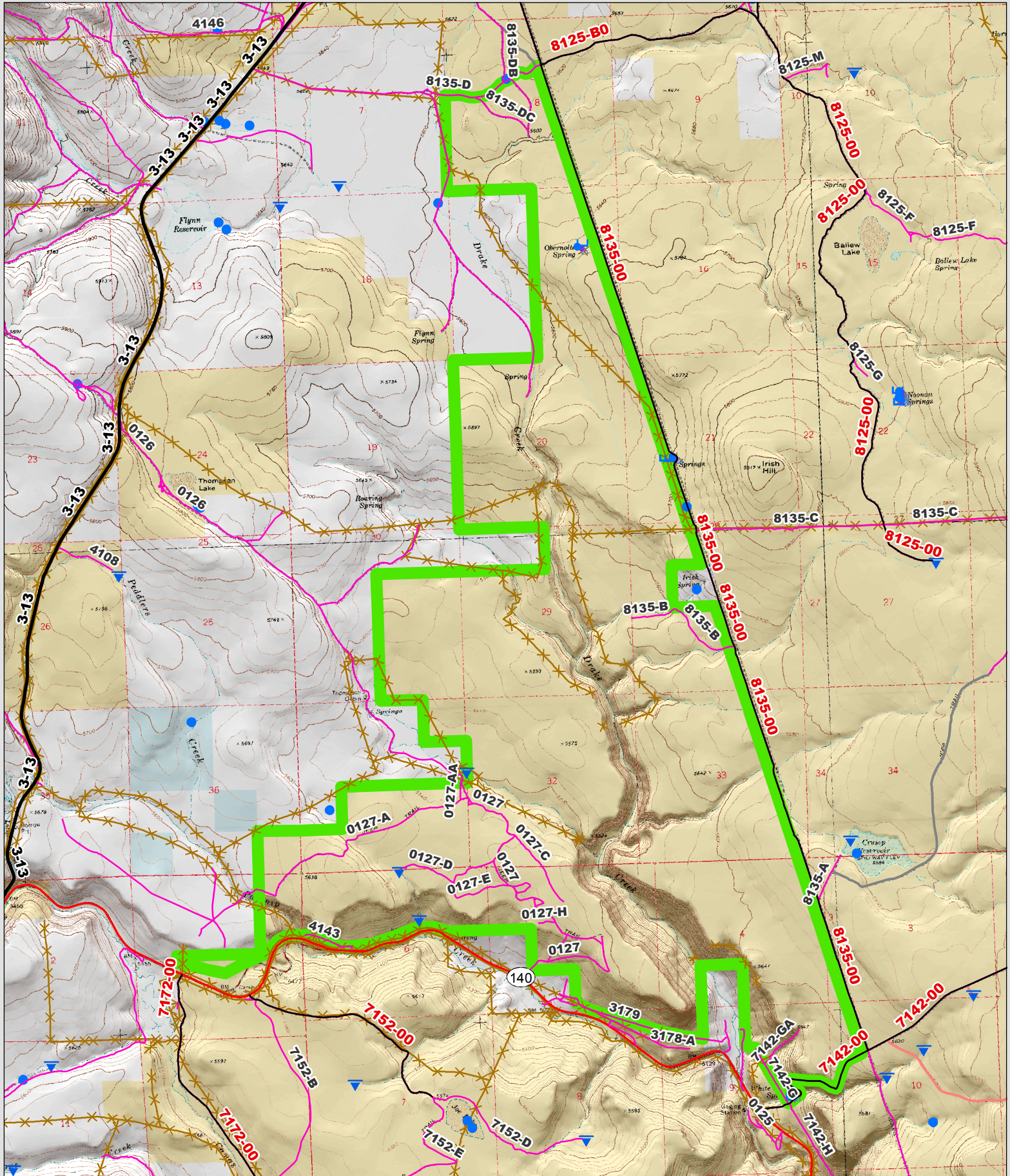
This form documents information that constitutes an inventory finding on wilderness characteristics. It does not represent a formal land use allocation or a final agency decision subject to administrative remedies under 43 CFR parts either 4 or 1610.5-2.



 Wilderness Character Inventory Unit



 No warranty is made by the Bureau of Land Management as to the accuracy, reliability, or completeness of these data for individual or aggregate use with other data. Original data were compiled from various sources. This information may not meet National Map Accuracy Standards. This product was developed through digital means and may be updated without notification.



<p> Wilderness Character Inventory Unit</p> <p>Ownership</p> <ul style="list-style-type: none"> Bureau of Land Management U.S. Forest Service State Private/Unknown 	<p>Roads/Trails</p> <ul style="list-style-type: none"> Motorized Routes Highways Reclaiming Routes Interim Routes 	<p>Pipelines and Ditches</p> <ul style="list-style-type: none"> Ditch Water Pipeline Guzzler Fences 	<p>Water Developments</p> <ul style="list-style-type: none"> Dam Reservoir Spring Development Trough Water Diversion 	<ul style="list-style-type: none"> Water Tank Waterhole Well - Water 	<p>0.9 0.45 0 0.9 Miles</p> <p></p> <p></p>	<p> No warranty is made by the Bureau of Land Management as to the accuracy, reliability, or completeness of these data for individual or aggregate use with other data. Original data were compiled from various sources. This information may not meet National Map Accuracy Standards. This product was developed through digital means and may be updated without notification.</p>
--	--	--	---	--	--	---