

Year: 2018

Inventory Unit Number/Name: OR-015-038B/ Cox Butte South

FORM 1

DOCUMENTATION OF BLM WILDERNESS INVENTORY FINDINGS ON RECORD

1. Is there existing BLM wilderness inventory information on all or part of this area?

No _____ Yes X (if more than one unit is within the area, list the names/numbers of those units):

a) **Inventory Source:** Wilderness Inventory – Final Intensive Inventory Decisions; USDI BLM - Oregon and Washington, November 1980.

b) **Inventory Unit Number(s)/Name(s):** 1-38/ Cox Butte

c) **Map Name(s)/Number(s):** Intensive Wilderness Inventory - Final Decisions; USDI BLM - Oregon, November 1980.

d) **BLM District(s)/Field Office(s):** Lakeview District, Lakeview Resource Area.

2. BLM Inventory Findings on Record:

Existing inventory information regarding wilderness characteristics (if more than one BLM inventory unit is associated with the area, list each unit and answer each question individually for each inventory unit):

Unit #	Size (historic acres)	Natural Condition? Y/N	Outstanding Solitude? Y/N	Outstanding Primitive & Unconfined Recreation? Y/N	Supplemental Values? Y/N
1-38	41,200	N	N	N	N/A
1-38B*	13,357	N	N/A	N/A	N/A

*The inventory of this unit was updated in 2013. However, due to a State Office-sponsored Wilderness Inventory Consistency Evaluation and subsequent guidance, the 2013 inventory analysis and findings are being replaced by this current 2018 inventory review. Documentation of the 2013 inventory can be found in the wilderness inventory project record.

Summarize any known primary reasons for prior inventory findings listed in this table:

In 1980, the unit was described as low rolling contours dropping in elevation to Dry Valley on the east. The unit contained some minor draws, which opened to the east. The northern end of the unit climbed in elevation toward Little Juniper Mountain and the highest point in

the unit was Cox Butte. The unit had sagebrush cover and a large grass seeding with scattered juniper trees near the northern border. The unit was found to contain 25 water developments (which ranged in from small reservoirs to large lakebed pits), 29 miles of “ways,” and Cox Grove drill seeding (1800 acres). The general flatness of the terrain left one exposed to all the developments listed above, and the area did not retain a natural appearance. The unit did not meet the naturalness criteria because the developments were scattered through the unit to the extent that they were found to be unavoidable. Opportunities for solitude were described as limited to the northern part of the unit where the terrain is more broken and vegetated. This unit was described as having high potential for primitive recreation opportunities. Hunting and wildlife observation was thought to be good due to the abundance of birds, deer, and antelope. Although the area could be hiked and provide some areas of interest for the recreationist, the disturbances were found to prevent the experience from having primitive or wilderness qualities.

FORM 2

DOCUMENTATION OF CURRENT WILDERNESS INVENTORY CONDITIONS

Unit Number/Name: OR-015-038B/ Cox Butte South

(1) Is the unit of sufficient size? Yes No

Between 2007 and 2016, BLM staff conducted field inventory in the area as part of a process to update its road and wilderness inventories and to gather additional information to supplement ONDA’s wilderness information. This fieldwork included photo documentation of the boundary and interior routes and a re-evaluation of wilderness characteristics for this area. Using both ONDA and BLM photos, field logs, and staff field knowledge, the BLM completed route analysis within the area in 2017.

The BLM determined that the inventory unit is bounded by BLM roads 6130-00 and private lands to the west; BLM interim numbered roads 6130-J0, 6120-AC, and 6120-AJ to the south; and BLM roads 6120-A0 and 6120-00 to the east. Due to changes in boundary determinations (roads) and cut-outs of unnatural features (pipeline and access route), less than 1 acre was removed from the unit.

Thus, based on these boundary and road determinations, the BLM found the Cox Butte South inventory unit to exceed the minimum size criteria at approximately 13,368 acres of BLM-administered lands.

Additional background on the process the BLM followed during this evaluation is contained in the document, *Wilderness Inventory Maintenance Process for the Lakeview Resource Area, BLM* and in the *Route Analysis Forms*. Both documents can be found in the wilderness inventory file.

DESCRIPTION OF CURRENT CONDITIONS:

This unit is located approximately 11 miles south of Wagontire, Oregon. It is approximately 7.5 miles long by 4 miles wide. Topographically, the eastern three-quarters of the unit is very flat with some small rolling hills, small buttes (25-75 ft. high), and a few dry lakebed depressions (5-15 ft. deep), including Buckaroo Lake, Big Lake, Roadside Waterhole, Rehab Reservoir, and a portion of Sagehen Lake. The unit also contains a few short canyons (20-75 ft. deep) including portions of Cox and Clark Canyons. As well as 5 miles of a rim (50-200 ft. high) running almost the full length of the eastern boundary. Overall, the unit ranges in elevation from 4,600 to 5,150 feet. Vegetatively, the unit is composed of sagebrush, grasses, and a few scattered juniper.

(2) Is the unit in a natural condition? Yes No N/A

In 1980, historic Unit 1-38 contained 25 water developments (which ranged in from small reservoirs to large lakebed pits), 29 miles of “ways,” and Cox Grove drill seeding (1800 acres). The general flatness of the terrain left one exposed to all the developments listed above, and the area did not retain a natural appearance. The unit did not meet the naturalness criteria because the developments were scattered through the unit to the extent that they were found to be unavoidable.

The unit currently contains the following man-made developments/disturbances: 3,875 acres of wildfire, 2,104 acres of seeding, 14 miles of fence, 20 waterholes, 7 reservoirs, 23 miles of mostly rehabbed/reclaimed routes, and 1 wilderness therapy group campsite.

Presently, almost 4 decades after the original inventory, these developments are weathered and grown over with herbaceous grasses and sagebrush. As a result, developments now fade into the background of the unit and are largely only noticeable at a close distance (1/4th mile or less) and are thus substantially unnoticeable from further distances. Furthermore, many of the disturbances are located near the perimeter of the unit and, as such, have a small area of influence. Areas that were seeded or allowed to revegetate naturally, have been invaded by rabbit bush, sagebrush, and grasses and have returned to a natural, post fire, appearing condition.

Based on a review of all the available information including photos, staff knowledge, and field review, the BLM concluded that the unit appears in a natural condition where the imprints of man are substantially unnoticeable.

(3) Does the unit (or the remainder of the unit if a portion has been excluded due to unnaturalness and the remainder is of sufficient size) **have outstanding opportunities for solitude?** Yes No N/A

In 1980, historic Unit 1-38 was found to possess some opportunities for solitude in the northern part of the unit where the terrain is more broken and vegetated. Note: this portion is no longer within the current inventory unit.

The BLM acknowledges that there are limited opportunities for solitude within the Cox Butte South inventory unit. Topographically, the eastern three-quarters of the unit is very flat with some small rolling hills, small buttes (25-75 ft. high), and a few dry lakebed depressions (5-15 ft. deep), including Buckaroo Lake, Big Lake, Roadside Waterhole, Rehab Reservoir, and a portion of Sagehen Lake. The unit also contains a few short canyons (20-75 ft. deep) including portions of Cox and Clark Canyons. As well as 5 miles of a rim (50-200 ft. high) running almost the full length of the eastern boundary. Overall, the unit ranges in elevation from 4,600 to 5,150 feet. Vegetatively, the unit is composed of sagebrush, grasses, and a few scattered juniper. These opportunities are less than outstanding as the area's characteristic landscape almost completely lacks vegetative screening and existing topographic screening is insufficient to effectively allow those recreating in the area to avoid the sights and sounds of others.

Thus, for the reasons specified above and based on a review of all the available information including (BLM and citizen provided) photos, staff knowledge, and field review, the BLM concluded the Cox Butte South inventory unit does not possess outstanding opportunities for solitude.

(4) Does the unit (or the remainder of the unit if a portion has been excluded due to unnaturalness and the remainder is of sufficient size) **have outstanding opportunities for primitive and unconfined recreation?** Yes _____ No X N/A _____

In 1980, historic Unit 1-38 was found to possess a high potential for primitive recreation opportunities. Hunting and wildlife observation was thought to be good due to the abundance of birds, deer, and antelope. Although the area could be hiked and provide some areas of interest for the recreationist, disturbances were found to prevent the experience from having primitive or wilderness qualities. Note: these values were found in relation to the original 41,200 acre unit and now must be analyzed on its own merits.

The BLM finds the unit offers limited opportunities for hiking, horseback riding, backpacking, camping, wildlife observation, exploration, scenery, photography, stargazing, trapping, and hunting. However, the BLM determined that the unit does not possess outstanding opportunities for primitive and unconfined recreation through either the diversity of recreational activities possible in the area or by the outstanding quality of one opportunity relative to opportunities found within the Lakeview Resource Area.

(5) Does the unit have supplemental values? Yes _____ No _____ N/A X

Supplemental values were not evaluated as the unit was determined to lack both outstanding opportunities for solitude and or primitive and unconfined recreation, and therefore does not meet the minimum wilderness criteria.

Summary of Findings and Conclusion

Unit Number/Name: OR-015-038B/ Cox Butte South

Summary Results of Analysis:

1. Does the area meet the size requirements? Yes No
2. Does the area appear to be natural? Yes No
3. Does the area offer outstanding opportunities for solitude or a primitive and unconfined type of recreation? Yes No NA
4. Does the area have supplemental values? Yes No NA

Conclusion (Check One):


The area- or a portion of the area- has wilderness character:
(items 1, 2 and 3 must be checked "yes").

The area does not have wilderness character: (any of items 1, 2 and 3 are checked "no").

Prepared by (Member Names and Titles):

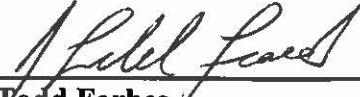

Chris Bishop: Outdoor Recreation Planner

11/1/2018
Date


Jami Ludwig: Assistant Field Manager

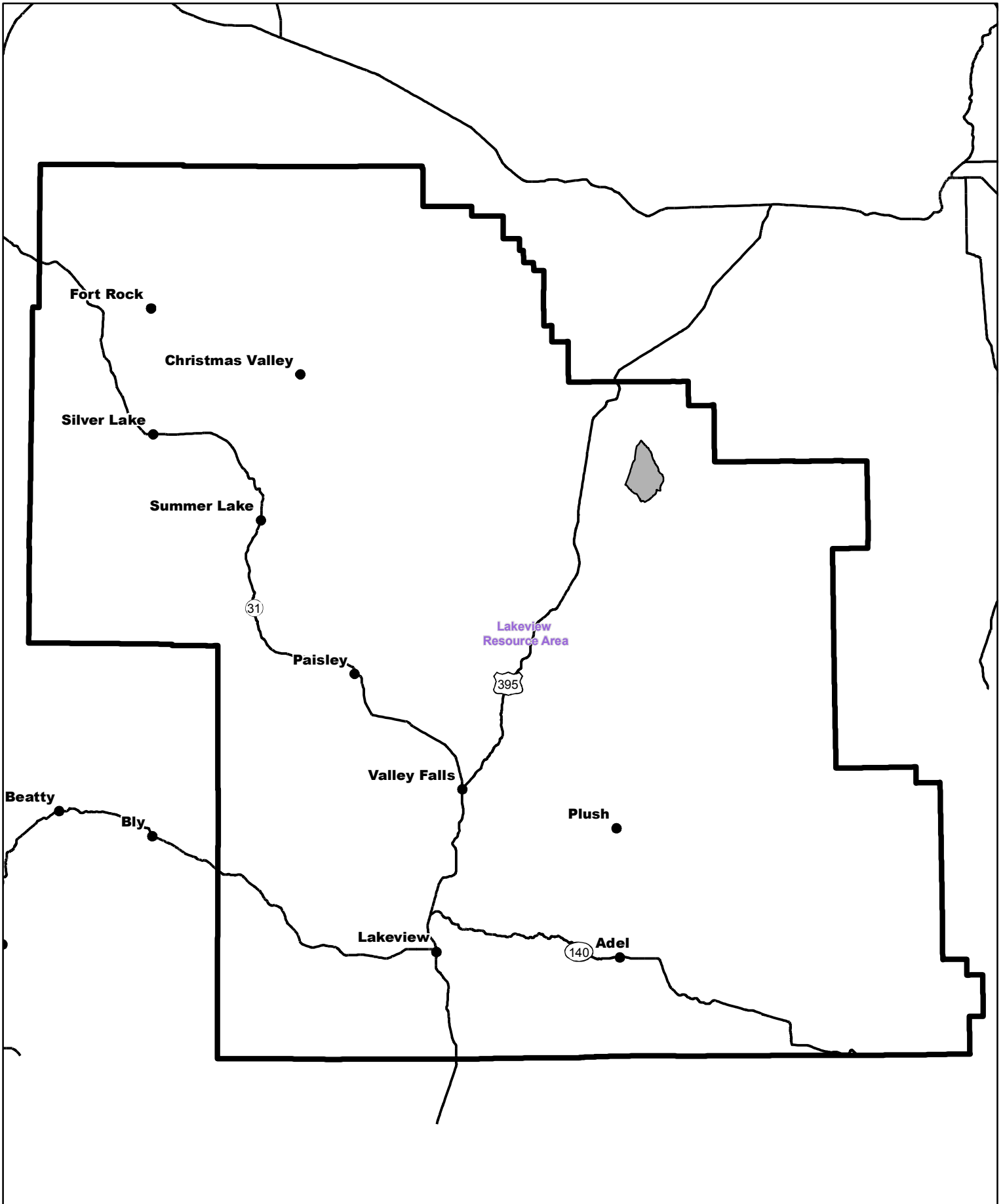
11/1/18
Date


Approved by:

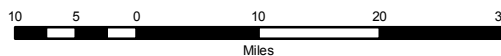

J. Todd Forbes
Field Manager


11/1/18
Date

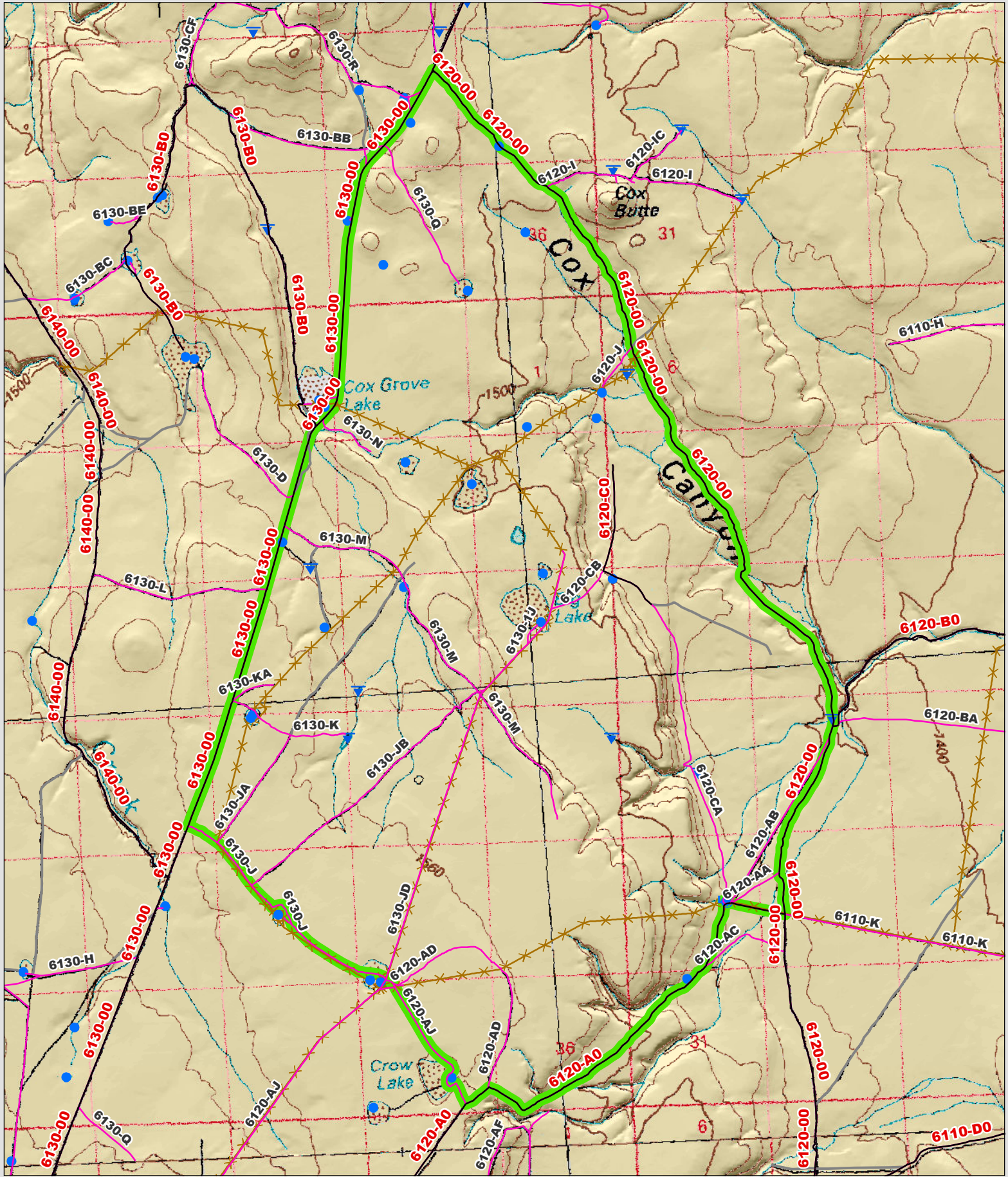
This form documents information that constitutes an inventory finding on wilderness characteristics. It does not represent a formal land use allocation or a final agency decision subject to administrative remedies under 43 CFR parts either 4 or 1610.5-2.



 Wilderness Character Inventory Unit



 No warranty is made by the Bureau of Land Management as to the accuracy, reliability, or completeness of these data for individual or aggregate use with other data. Original data were compiled from various sources. This information may not meet National Map Accuracy Standards. This product was developed through digital means and may be updated without notification.



Wilderness Character Inventory Unit

Ownership

- Bureau of Land Management
- U.S. Forest Service
- State
- Private/Unknown

Roads/Trails

- Motorized Routes
- Highways
- Reclaiming Routes
- Interim Routes

Pipelines and Ditches

- Ditch
- Water Pipeline
- Guzzler
- Fences

Water Developments

- Dam
- Reservoir
- Spring Development
- Trough
- Water Diversion

- Water Tank
- Waterhole
- Well - Water

1 0.5 0 1 Miles

No warranty is made by the Bureau of Land Management as to the accuracy, reliability, or completeness of these data for individual or aggregate use with other data. Original data were compiled from various sources. This information may not meet National Map Accuracy Standards. This product was developed through digital means and may be updated without notification.