

Year: 2018

Inventory Unit Number/Name: OR-015-035A/ Alkali Valley

**FORM 1**

**DOCUMENTATION OF BLM WILDERNESS INVENTORY FINDINGS ON RECORD**

**1. Is there existing BLM wilderness inventory information on all or part of this area?**

No \_\_\_\_\_ Yes   X   (if more than one unit is within the area, list the names/numbers of those units):

**a) Inventory Source:** Wilderness – Proposed Initial Inventory: Roadless Areas and Islands Which Clearly Do Not Have Wilderness Characteristics; USDI BLM - Oregon and Washington, April 1979.

**b) Inventory Unit Number(s)/Name(s):** 1-35

**c) Map Name(s)/Number(s):** Final Decision - Initial Wilderness Inventory: Public Lands and Islands Which Do Not Have Wilderness Characteristics and Units To Be Intensively Inventoried; USDI BLM - Oregon, August 1979.

**d) BLM District(s)/Field Office(s):** Lakeview District, Lakeview Resource Area.

**2. BLM Inventory Findings on Record:**

Existing inventory information regarding wilderness characteristics (if more than one BLM inventory unit is associated with the area, list each unit and answer each question individually for each inventory unit):

Unit #	Size (historic acres)	Natural Condition? Y/N	Outstanding Solitude? Y/N	Outstanding Primitive & Unconfined Recreation? Y/N	Supplemental Values? Y/N
1-35	14,000	Y	N	N	N/A
1-35A*	7,065	Y	N	N	N/A

\*The inventory of this unit was updated in 2012. However, due to a State Office-sponsored Wilderness Inventory Consistency Evaluation and subsequent guidance, the 2012 inventory analysis and findings are being replaced by this current 2018 inventory review. Documentation of the 2012 inventory can be found in the wilderness inventory project record.

*Summarize any known primary reasons for prior inventory findings listed in this table:*

In 1970, historic Unit 1-35 unit contained approximately 14,000 acres of public land immediately north of Alkali Lake and adjacent to Highway 395. The area was bounded by roads and approximately 100 acres of private land in the south. The area contained some sand dunes, sage flats and the rims of Alkali Buttes. One bladed road crossed east-west in the middle of the unit. The area was primarily impacted by Highway 395. Lands west of the unit were seeded for livestock forage. A chemical dump was located approximately two miles south of the unit at Alkali Lake. Due to the generally flat topography and the hazard of the dump, opportunities for solitude and unconfined recreation were severely limited.

**FORM 2**

**DOCUMENTATION OF CURRENT WILDERNESS INVENTORY  
CONDITIONS**

**Unit Number/Name:** OR-015-035A/ Alkali Valley

**(1) Is the unit of sufficient size?** Yes  No

Between 2007 and 2016, BLM staff conducted field inventory in the area as part of a process to update its road and wilderness inventories and to gather additional information to supplement ONDA's wilderness information. This fieldwork included photo documentation of the boundary and interior routes and a re-evaluation of wilderness characteristics for this area. Using both ONDA and BLM photos, field logs, and staff field knowledge, the BLM completed route analysis within the area in 2017.

The BLM determined that the inventory unit is bounded by BLM Roads 6160-00 to the north and northeast; BLM interim numbered road 6160-F0 to the west; BLM interim numbered road 1113-00 to the south; and a right-of-way for Highway 395 to the east. In addition, less than an acre of unnatural features (pipeline and well) were removed from the southwest boundary of the unit

Thus, based on these boundary and road determinations, the BLM found the Alkali Valley inventory unit to exceed the minimum size criteria at approximately 7,055 acres of BLM-administered lands.

Additional background on the process the BLM followed during this evaluation is contained in the document, *Wilderness Inventory Maintenance Process for the Lakeview Resource Area, BLM* and in the *Route Analysis Forms*. Both documents can be found in the wilderness inventory file.

**DESCRIPTION OF CURRENT CONDITIONS:**

This unit is located approximately 5.5 miles north of Alkali Lake, Oregon. It is approximately 4 miles long by 3 miles wide. Topographically, the entirety of the unit is the flat lakebed of Alkali Valley with vegetated sand dunes (5-10 ft. high). The unit also contains

North Alkali Lake, a lakebed depression (1-15 ft. deep). Overall, the unit ranges in elevation from 4,290 to 4,332 feet. Vegetatively, the unit is composed primarily of sagebrush.

**(2) Is the unit in a natural condition?** Yes  No  N/A

In 1979, historic Unit 1-35 contained one bladed road that crossed east-west in the middle of the unit.

The unit currently contains the following man-made developments/disturbances: 1,153 acres of wildfire, 1,144 acres of seeding, 2.75 miles of motorized routes, 0.75 miles of reclaiming routes, 613 feet of ditch, and a rehabbed gravel pit (less than a 10<sup>th</sup> of an acre),

Presently, almost 4 decades after the original inventory, these developments are weathered and grown over with herbaceous grasses and sagebrush. As a result, developments now fade into the background of the unit and are largely only noticeable at a close distance (1/4<sup>th</sup> mile or less) and are thus substantially unnoticeable from further distances. Furthermore, many of the disturbances are located near the perimeter of the unit and, as such, have a small area of influence. Areas burned in wildfires have revegetated.

Based on a review of all the available information including photos, staff knowledge, and field review, the BLM concluded that the unit appears in a natural condition where the imprints of man are substantially unnoticeable.

**(3) Does the unit (or the remainder of the unit if a portion has been excluded due to unnaturalness and the remainder is of sufficient size) have outstanding opportunities for solitude?** Yes  No  N/A

In 1979, opportunities for solitude within historic Unit 1-35 were determined to be severely limited due to the generally flat topography of the area.

The BLM acknowledges that there may be limited opportunities for solitude within the Alkali Valley inventory unit. Topographically, the entirety of the unit is the flat lakebed of Alkali Valley with vegetated sand dunes (5-10 ft. high). The unit also contains North Alkali Lake, a lakebed depression (1-15 ft. deep). Overall, the unit ranges in elevation from 4,290 to 4,332 feet. Vegetatively, the unit is composed primarily of sagebrush. These opportunities are less than outstanding as the area's characteristic landscape lacks vegetative screening and existing topographic screening is insufficient to effectively allow those recreating in the area to avoid the sights and sounds of others.

Thus, for the reasons specified above and based on a review of all the available information including (BLM and citizen provided) photos, staff knowledge, and field review, the BLM concluded the Alkali Valley inventory unit does not possess outstanding opportunities for solitude.

**(4) Does the unit (or the remainder of the unit if a portion has been excluded due to unnaturalness and the remainder is of sufficient size) have outstanding opportunities for primitive and unconfined recreation?** Yes \_\_\_\_\_ No  X  N/A \_\_\_\_\_

In 1979, opportunities for primitive and unconfined recreation within historic Unit 1-35 were determined to be severely limited due to the generally flat topography of the area.

The BLM finds the unit offers limited opportunities for hiking, horseback riding, backpacking, camping, wildlife observation, exploration, scenery, photography, stargazing, trapping, and hunting. However, the BLM determined that the unit does not possess outstanding opportunities for primitive and unconfined recreation through either the diversity of recreational activities possible in the area or by the outstanding quality of one opportunity relative to opportunities found within the Lakeview Resource Area.

**(5) Does the unit have supplemental values?** Yes \_\_\_\_\_ No \_\_\_\_\_ N/A  X

Supplemental values were not evaluated as the unit was determined to lack both outstanding opportunities for solitude and or primitive and unconfined recreation, and therefore does not meet the minimum wilderness criteria.

**Summary of Findings and Conclusion**

**Unit Number/Name:** OR-015-035A/ Alkali Valley

**Summary Results of Analysis:**

- 1. Does the area meet the size requirements?       Yes    No
- 2. Does the area appear to be natural?             Yes    No
- 3. Does the area offer outstanding opportunities for solitude or a primitive and unconfined type of recreation?                     Yes    No    NA
- 4. Does the area have supplemental values?        Yes    No    NA

**Conclusion (Check One):**

The area- or a portion of the area- has wilderness character:  
*(items 1, 2 and 3 must be checked "yes").*

The area does not have wilderness character: *(any of items 1, 2 and 3 are checked "no").*

**Prepared by (Member Names and Titles):**


  
Chris Bishop: Outdoor Recreation Planner

11/1/2018  
Date

  
Jami Ludwig: Assistant Field Manager

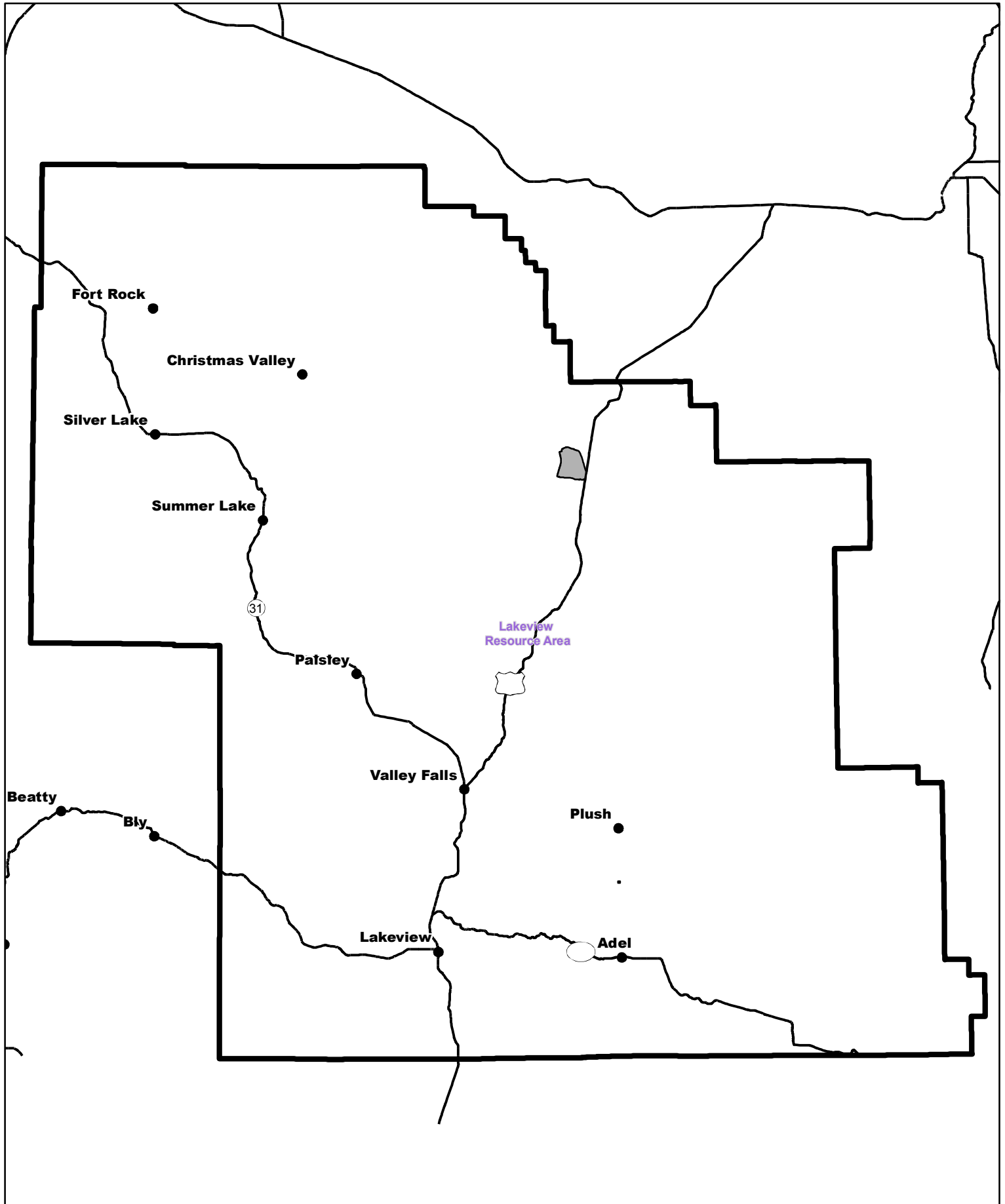
11/1/18  
Date


**Approved by:**

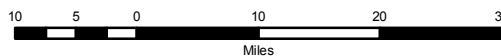
  
J. Todd Forbes  
Field Manager


11/1/18  
Date

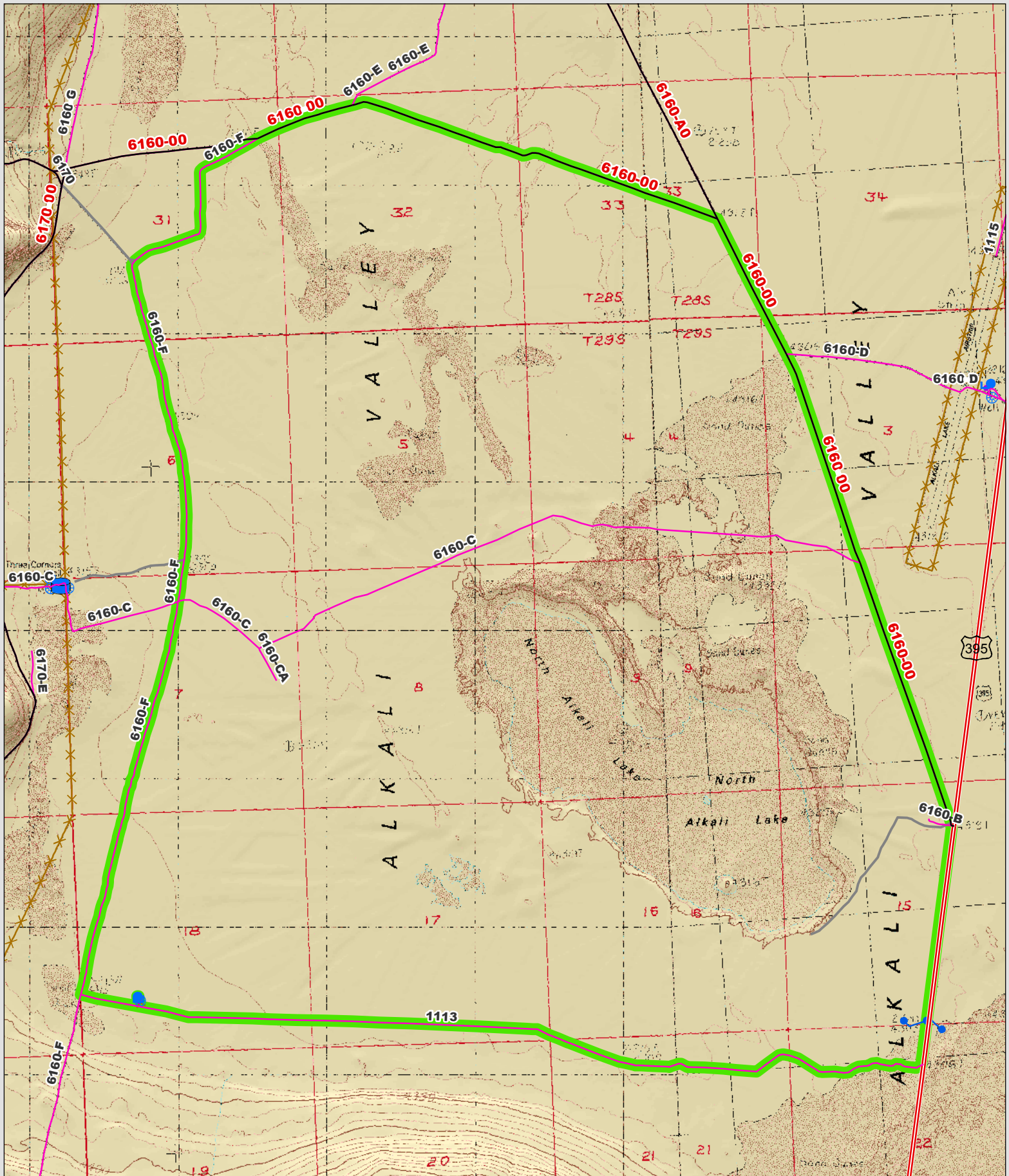
***This form documents information that constitutes an inventory finding on wilderness characteristics. It does not represent a formal land use allocation or a final agency decision subject to administrative remedies under 43 CFR parts either 4 or 1610.5-2.***



 Wilderness Character Inventory Unit



 No warranty is made by the Bureau of Land Management as to the accuracy, reliability, or completeness of these data for individual or aggregate use with other data. Original data were compiled from various sources. This information may not meet National Map Accuracy Standards. This product was developed through digital means and may be updated without notification.



**Wilderness Character Inventory Unit**

**Ownership**

- Bureau of Land Management
- U.S. Forest Service
- State
- Private/Unknown

**Roads/Trails**

- Motorized Routes
- Highways
- Reclaiming Routes
- Interim Routes

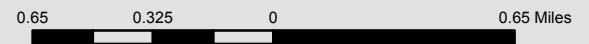
**Pipelines and Ditches**

- Ditch
- Water Pipeline
- Guzzler
- Fences

**Water Developments**

- Dam
- Reservoir
- Spring Development
- Trough
- Water Diversion

- Water Tank
- Waterhole
- Well - Water



No warranty is made by the Bureau of Land Management as to the accuracy, reliability, or completeness of these data for individual or aggregate use with other data. Original data were compiled from various sources. This information may not meet National Map Accuracy Standards. This product was developed through digital means and may be updated without notification.