

# Rice Canyon

Off-Highway Vehicle Area



## Map & Guide

Protect your public lands and resources by staying on designated routes and trails!



BLM/OA/GI/2018/007-48300

### For more information contact:

Bureau of Land Management  
Eagle Lake Field Office  
2550 Riverside Dr.  
Susanville, CA 96130  
(530) 257-0456  
[www.blm.gov/visit/rice-canyon](http://www.blm.gov/visit/rice-canyon)

Let someone know where you are going and when you expect to return!



### Directions to Rice Canyon from Susanville, California

From Susanville, take CA-36 E/Main Street toward Reno, Nevada. Turn left onto County Highway A27/Johnstonville Road. Veer left onto County Highway A27/Center Road. Make a left onto Rice Canyon Road, and follow to the Rice Canyon OHV open area.

### Directions to Rice Canyon from Reno, Nevada

From US-395 North, turn left onto Leavitt Lane. Make a left on County Highway A27/Center Road. Take the first right onto Rice Canyon Road, and follow to the Rice Canyon OHV open area.

### Banner Lassen Medical Center Emergency Room

1800 Spring Ridge Dr.  
Susanville, CA  
(530) 252-2000

### Emergencies DIAL 911



The Rice Canyon Off-highway Vehicle (OHV) Open Area lies within the Antelope/Shaffer/Bald Mountain Special Recreation Management Area (SRMA). The open OHV area is about 10 miles from Susanville, CA and consists of 120 acres of public land managed primarily for OHV use. It is open to all types of vehicles such as four-wheel drive vehicles, all-terrain vehicles (ATV), utility terrain vehicles (UTV) and motorcycles. The area provides excellent opportunities for novice riders to improve their skills on the loop trails and for experienced riders looking for steep hill-climb opportunities. All OHV use beyond the open area is limited to designated routes and trails.



Operations and maintenance of facilities, roads, and trails within the recreation area are funded in part, by the California Off-Highway Motor Vehicle Recreation Division. For more California State Parks information, visit their website at [ohv.parks.ca.gov](http://ohv.parks.ca.gov).

#### Trash

Trash dumping is illegal, damaging to wildlife and habitat, and expensive to clean up. Please help keep your public lands clean. To participate in an organized cleanup event or to report a trash dumping, contact the Eagle Lake Field Office at (530) 257-0456.

#### Private Land

Please respect all private property postings, and gain permission to cross private lands. Keep in mind, the Rice Canyon open area is adjacent to a residential area. Follow all posted speed limits and respect homeowners.

#### Sierra Sportsmen Club Shooting Range

The Sierra Sportsmen Club is located at 478-505 Brier Patch Road off Rice Canyon Road. The area is approximately 2 miles north of the Rice Canyon Open OHV Area. The range is managed in partnership with the BLM, Lassen County and the Sierra Sportsmen Club. The club is a registered National Rifle Association, California Rifle and Pistol Association, and Single Action Shooting Society club. For more information, visit their website at [www.sierrasportsmen.com](http://www.sierrasportsmen.com) or contact the BLM Eagle Lake Field Office at 530-257-0456.

#### Camping/Water

Camping is allowed on public lands for up to 14 consecutive days, however, developed campsites are not provided, and potable water is not available. Also, the dumping of grey or black wastewater is illegal.

#### Campfires

Campfires are allowed with a current campfire permit, but seasonal fire restrictions may prohibit campfires during periods of high fire danger. Remember to always put your campfire completely out! To acquire a campfire permit or learn current fire restrictions, contact the Eagle Lake Field Office.

#### Safety

The Bureau of Land Management (BLM) manages public lands for multiple uses, so be aware of other visitors and your surroundings. Always let someone know where you are going and when you expect to return. Visitors should be aware of potential wildlife dangers in the area, such as mountain lions and rattlesnakes.

#### Required OHV Safety Training

Enroll youth riders in the required ATV training. For more information, visit:

ATV Safety Institute  
Phone: (800) 887-2887  
[www.atvsafety.org](http://www.atvsafety.org)

California Motorcyclist Safety Program  
Phone: (877) 743-3411  
[www.ca-msp.org](http://www.ca-msp.org)

#### Sound Compliance Information:

If your OHV was manufactured:	Noise Limit
Before January 1, 1986	101 dbA
On or after January 1, 1986	96 dbA
If your competition* OHV was manufactured:	Noise Limit
Before January 1, 1998	101 dbA
On or after January 1, 1998	96 dbA

\*Competition OHVs are not manufactured to comply with Environmental Protection Agency noise or California emission standards. Refer to your owner's manual, or contact your local dealer to determine the designation of your OHV. If you would like to set up an appointment to have your ATV or motorcycle tested for sound compliance, contact the Eagle Lake Field Office at (530) 252-5303.

#### Trail Riding & Safety Tips PLAN SMART!

- Purchase and use required safety gear!
- Let others know where you are riding and when you plan to return.
- Always plan ahead. Obtain all required maps, and bring overnight emergency supplies.
- Never ride alone!
- Stay on designated trails. Restoration of damaged areas is often paid with tax dollars and can lead to trail closures.
- Maintain vehicles and equipment in safe and optimal operating condition.
- Act responsibly and have respect for other recreation users and natural and cultural resources.
- Ride cautiously. Trail conditions change constantly, so be ready for anything!



## Regulations

This guide does not include every California OHV law. Please remember, it is your responsibility to know the laws. For more information, contact the California Department of Motor Vehicles or visit [www.dmv.ca.gov](http://www.dmv.ca.gov).

- Visitors are responsible for knowing area rules and regulations, which are enforceable under the Code of Federal Regulations. Violations are punishable with fines up to \$1,000 and/or imprisonment for up to 12 months.
- Vehicle use is limited to designated routes except within the Rice Canyon OHV open area boundary.
- All OHVs must have proper registration (a green or red sticker or street legal license).
- Out-of-state vehicles must be legally registered in another state and display a California Nonresident OHV Use Permit. For more information or to purchase a nonresident permit, visit [ohv.parks.ca.gov](http://ohv.parks.ca.gov).
- All off-road vehicles must have a properly installed spark arrestor that is approved by the U.S. Forest Service and has not been modified.
- It is illegal to ride or drive under the influence of alcohol, narcotics, or other drugs.
- State law requires the use of helmets while riding ATVs.
- State law prohibits passengers on ATVs unless the ATV was specifically designed for two or more people.
- All vehicles must meet state and federal noise standards.

## Firearm Regulations

**Fish and Game Code (FGC) 3004.** (a) It is unlawful for any person, other than the owner, person in possession of the premises, or a person having the express permission of the owner or person in possession of the premises, to hunt or to discharge while hunting, any firearm or other deadly weapon within 150 yards of any occupied dwelling house, residence, or other building or any barn or other

outbuilding used in connection therewith. The 150-yard area is a "safety zone." 3004. (b) It is unlawful for any person to intentionally discharge any firearm or release any arrow or crossbow bolt over or across any public road or way open to the public, in an unsafe manner.

**Code of Federal Regulations (CFR) 8365.2-5 Public health, safety and comfort.** On developed recreation sites and areas, unless otherwise authorized, no person shall: (a) Discharge or use firearms, other weapons, or fireworks.

**For hunting regulations,** contact the California Department of Fish and Wildlife.

## Shooting Safety

Target shooting and hunting are generally allowed on BLM-administered public lands, as long as it is done in a safe manner, without damaging natural resources or improvements on public lands. Please follow this guidance during your recreational shooting experience:

- Never shoot from or over any road or highway.
- Shooting is prohibited within any developed recreation site or trailhead.
- Always use a safe backdrop.
- Glass and exploding targets are prohibited.
- Do not use plastic pellets, tracer rounds, exploding rounds, or steel-core rounds.
- Do not attach targets to plants or place targets against rocks, plants, or solid objects. It is illegal to deface or destroy trees, signs, outbuildings, or other objects on federal lands.
- Carry in your targets and carry out all litter, brass and shell casings. All targets, shell casings, debris and trash must be removed.
- During fire season, some areas may be closed to target shooting.

See the Rice Canyon and Surrounding Area Map on the other side of this brochure for commonly used target shooting locations.



tread lightly!  
ON LAND AND WATER



For more information about the tread lightly! program, visit [www.treadlightly.org/](http://www.treadlightly.org/).

## Right Rider Etiquette

The future availability of the OHV trail system in Rice Canyon depends on you! Always yield to other users. Show respect when meeting others by slowing down or stopping. Use hand signals to indicate how many riders are following you. The Rice Canyon open area is managed for multiple uses, and the trails run both ways. Anticipate hunters, target shooters, hikers, horseback riders, mountain bikers, and other OHV enthusiasts using this area. Please ride responsibly, and share the open area!

## Tips on Leaving a Good Impression!

- Respect wildlife and plant species—the area is their home. Help keep the area open by staying on roads and trails.
- Keep your machine as quiet as possible. Noise is one of the biggest complaints by landowners and other recreationists.
- Do not destroy or remove cultural and historical resources.
- Be conscientious and minimize your impact by avoiding plants and wildlife, taking your trash home, and respecting other users on the trail.

## Wildlife

Help protect the habitat of mule deer, pronghorn, and other wildlife species by staying on designated trails and not crushing plants. For more information on mule deer, pronghorn, or other species, contact the California Department of Fish and Wildlife at (530) 254-6808, or visit their website at [www.wildlife.ca.gov](http://www.wildlife.ca.gov).

## Mule Deer



The mule deer (*Odocoileus hemionus*) is distinctive by its black-tipped tail and bifurcated, or forked, antlers. Each year, a buck's antlers start to grow in spring and are shed after mating season, from mid-January to mid-April. A mule deer's ears move constantly and independently, which contributed to the name "mule" deer. Mule deer bucks have somewhat more prominent ears than females. Their peculiar bounding leap, called stotting, allows them to cover distances up to 8 yards, with all four feet coming down together. During the winter, most mule deer leave the mountains and enter the valleys where there is less snow cover.

## Pronghorn



The pronghorn (*Antilocapra americana*) is distinguished by its horns, which are composed of slender, laterally flattened blades of bone that grow from the frontal bone of the skull and form permanent cores that develop into keratinous sheaths; the horns are shed and regrown yearly. The pronghorn is also known as the prong buck, pronghorn antelope, or antelope, and can run exceptionally fast and sustain high speeds longer than cheetahs. Pronghorn feed on a variety of vegetation such as low-lying shrubs, native grasses, and forbs. They occupy low-structured sagebrush habitats and some natural meadow areas. Prior to Euro-American settlement, the pronghorn was one of the most abundant big game species in California. However, by 1923 only about 1,000 remained due to adverse land use practices and unregulated hunting. Pronghorn numbers have increased slightly over the last 25 years but are still low in Lassen County.

## Rice Canyon Open Area Map

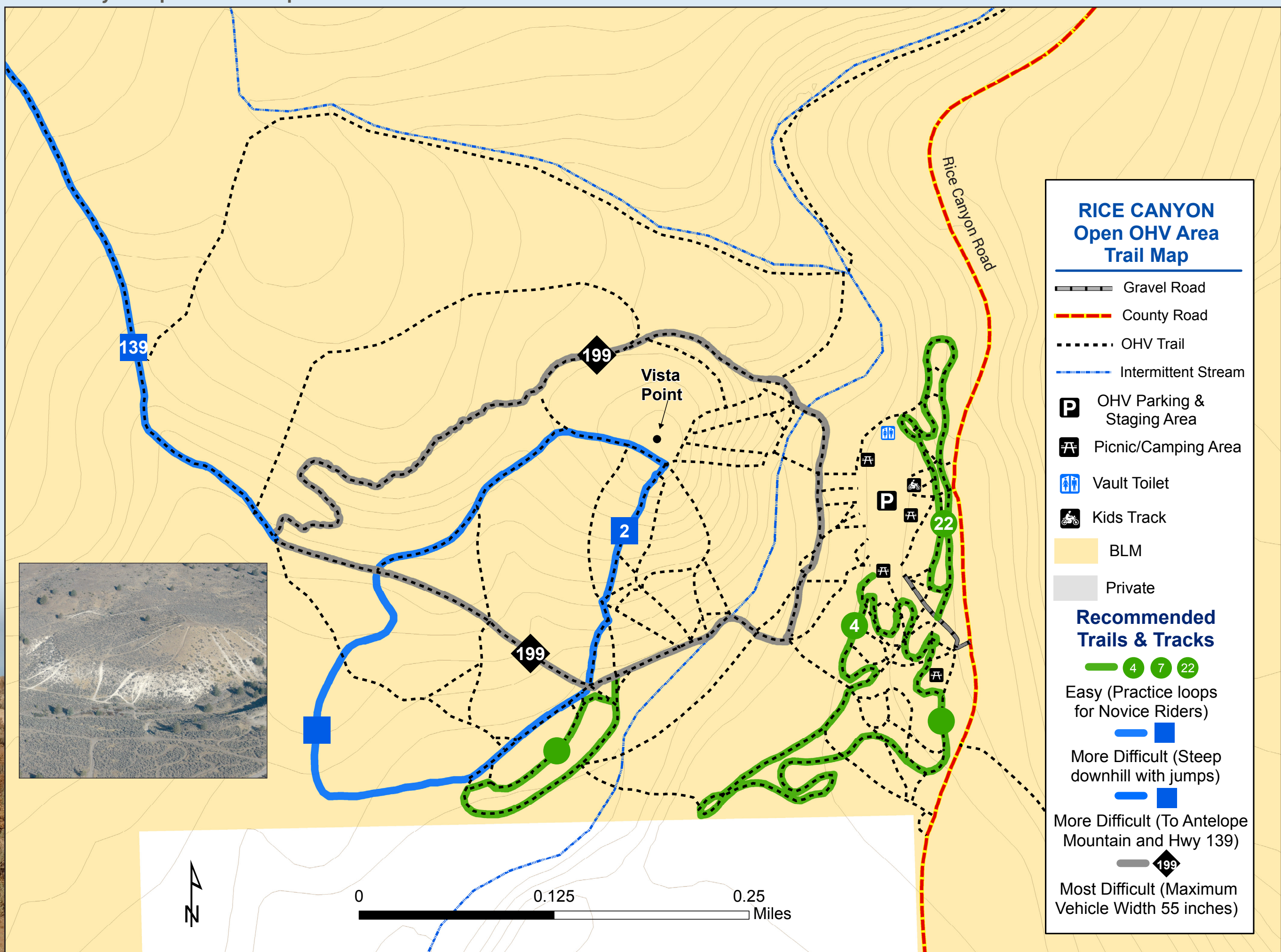
### Rice Canyon Off-Highway Vehicle Area

#### OHV Trailhead

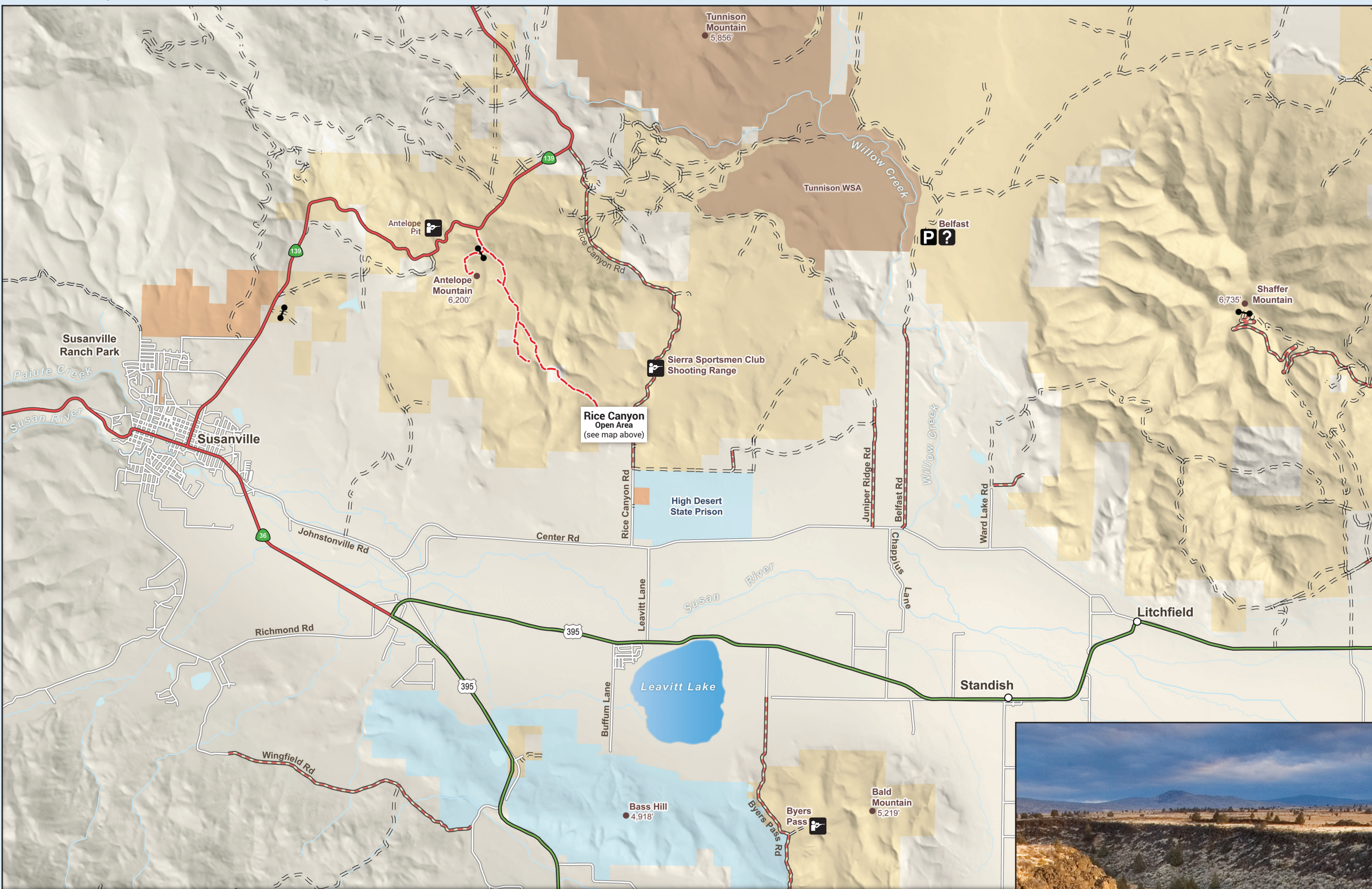
The Rice Canyon Open OHV area offers day-use and camping opportunities. Amenities include a graveled access road and parking area, loading and unloading ramps, shade structures, bbqs, picnic tables, fire rings, a vault toilet facility and bulletin boards. The trailhead also offers a small kids' track. Shooting is prohibited within any developed recreational site. For more information on shooting, see the Rice Canyon and Surrounding Area Map below.

#### Trail and Boundary Markers

Rice Canyon is an Open OHV area, therefore, users do not have to stay on the trails within the signed boundary. The roads and trails are marked throughout the Rice Canyon OHV area with brown vertical signs that designate the recommended type of vehicle and level of difficulty. Some of the popular "track-like" trail loops are numbered and correspond to the map in this guide.



## Rice Canyon and Surrounding Area Map



### Other Opportunities

Rice Canyon is just one feature of the 61,764-acre Antelope/Shaffer/Bald Mountain SRMA. For other recreational opportunities, visit one the following sites for these suggested activities:

- Antelope Mountain: hang gliding, hiking, and sightseeing
- Antelope Pit: target shooting
- Byers Pass: target shooting
- Bald Mountain: hunting, mountain biking, horseback riding, and hiking
- Belfast/Willow Creek Canyon (Tunnison Wilderness Study Area): hiking, sightseeing, stream fishing, hunting, and environmental education
- Shaffer Mountain: target shooting, hunting, mountain biking, sightseeing, and wildlife viewing
- Susanville Ranch Park: cross-country skiing, hiking, horseback riding, and mountain biking. For more information, visit [www.susanvillerranchpark.com](http://www.susanvillerranchpark.com).

This high-elevation desert area is part of the Modoc Plateau and ranges in elevation from 4,000 to 7,000 feet. The generally dry, warm days have average high summer temperatures close to 90 degrees, and the daytime winter temperature averages 40 degrees. For specific information about these areas, contact the Eagle Lake Field Office.



### Antelope/Shaffer/Bald Mountain Special Recreation Management Area: Rice Canyon Off-Highway Vehicle Area

