



# Becky Peak Wilderness

## Bureau of Land Management

**Ely District Office**  
(775) 289-1800  
702 N. Industrial Way  
Ely, NV 89301    [www.blm.gov/nv/st/en/fo/ely\\_field\\_office.html](http://www.blm.gov/nv/st/en/fo/ely_field_office.html)

**Caliente Field Office**  
(775) 726-8100  
1400 S. Front St.  
Caliente, NV 89008

**Size:** 18,189 acres

**Elevation:** 6,500 - 9,859 feet

**Designation:** White Pine County Conservation, Recreation and Development Act (2006)

### Directions

The Becky Peak Wilderness is located in northern White Pine County, approximately 50 miles north of Ely, Nevada. Access to this wilderness from Ely is north on Highway 93 for 40 miles. Turn right onto Schellbourne Pass Rd. (County Road 18) to access the east side of Becky Peak, or continue on U.S. Highway 93 for an additional 10 miles to BLM Road 4149 to access the southwestern edge of the area. For access to the eastern side continue on the Schellbourne Pass Rd. (County Road 18) for 12 miles, bearing left at the fork onto County Road 31. For the next 10 miles you will encounter several roads leading west toward the Becky Peak Wilderness.



### Area Description

The Becky Peak Wilderness lies at the northern end of the Schell Creek Range in eastern Nevada. Vegetation primarily includes desert brush and grass at the lower elevations and a scattering of pinyon and juniper stands on the upland slopes of Becky Peak and surrounding hillsides. Atop Becky Peak (9,859 feet) itself, you will encounter bristlecone and limber pine trees. Wildflowers can be abundant in the spring and include yarrow, prickly poppy, prickly pear cactus, larkspur, lupine, paintbrush, and Sego lilies. Pronghorn antelope are frequently seen through the sagebrush lowlands. Other animals that may be spotted on a visit to Becky Peak Wilderness include deer, wild horses, lizards and a variety of birds.

### Recreational Opportunities

Recreational opportunities include camping, hiking, backpacking, horseback riding, and hunting. Becky Peak Wilderness provides opportunities for solitude in the numerous washes extending from the mountain, particularly on the eastern side of the range. Highway 93 is generally in view from the western side of the wilderness. The forested areas also provide excellent coverage and seclusion.

If horseback riding in the area you may need to carry feed. Hay needs to be certified weed free. Hunting and non-commercial trapping are allowed under state and local laws within the wilderness. Remember camping is limited to 14 days and campsites are primitive. Remember that cutting or removing vegetation is not permitted. Gathering wood for campfires, when permitted, is limited to dead and down material. Please help preserve Nevada's fragile environments, park your vehicle or set up camp in previously used sites. Impact to the area can be minimized by practicing Leave No Trace ethics.

***Mechanized and motorized vehicles are  
NOT PERMITTED in wilderness.***

### Additional Information

- Signs indicating "Wilderness" and "Closed Road" are placed at various intervals. Obey all posted signs.
- Vehicles can be parked outside the wilderness boundary.
- Pets are allowed, but please keep your pets under control at all times.
- Removal, disturbance, or attempting to remove archaeological materials is a felony.
- Retrieving game or checking traps may only occur by foot or horseback within wilderness.
- Contact the Ely District BLM Office for current road conditions, and hazards.



### Maps

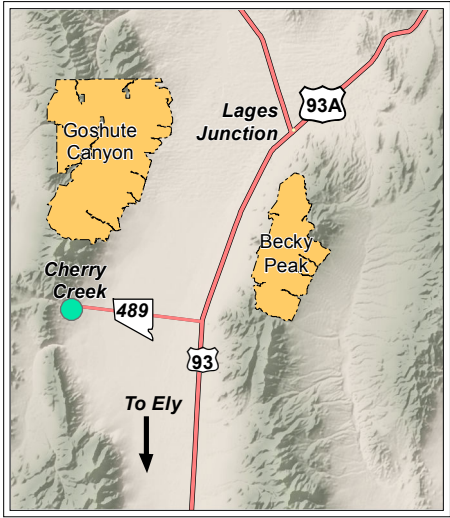
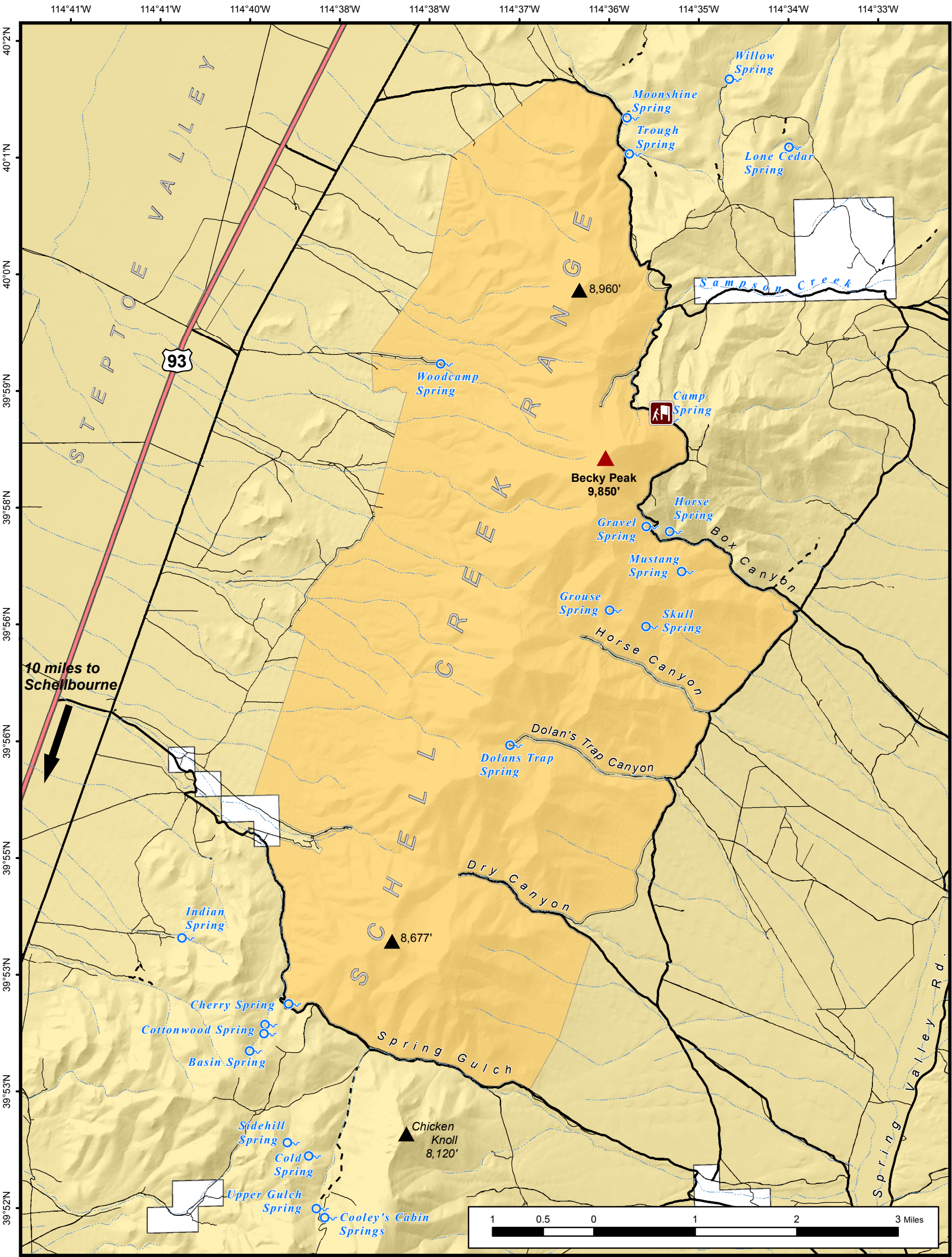
USGS 7.5 Quadrangle Maps: Becky Peak, Cherry Spring, Goshute Lake South, and Lages Station

BLM 1:100,000 Maps: Kern Mountains, and Currie





# Becky Peak Wilderness



**Legend**

- City
- Highest Peak in Wilderness
- Kiosk
- Main Routes
- 4WD or better
- ATV Route
- BLM Wilderness
- Land Managed by BLM
- Private Land



No warranty is made by the Bureau of Land Management as to the accuracy, reliability, or completeness of these data for individual use or aggregate use with other data. Original data were compiled from various sources. This information may not meet National Map Accuracy Standards. This product was developed through digital means and may be updated without notification.

Map Produced by: EYDO Wilderness Staff  
Date: 4/16/2015

