



CARRIZO PLAIN

NATIONAL MONUMENT



Junior Explorer Field Guide



NATIONAL CONSERVATION LANDS

U.S. DEPARTMENT OF THE INTERIOR
BUREAU OF LAND MANAGEMENT

CARRIZO PLAIN *Wildlife*



Tule elk



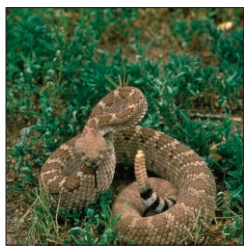
**San Joaquin
antelope squirrel**



San Joaquin kit fox



Pronghorn antelope



Western rattlesnake



AL SCHMIERER

Long-billed curlew



RACHEL ENDICOTT

Giant kangaroo rat



Burrowing owl



**San Joaquin
antelope
ground
squirrel**

**Junior Explorer
Field Guide**



WELCOME, *Junior Explorer!*

Come explore the lands and resources of the Carrizo Plain National Monument. This Field Guide focuses on the history and natural resources found in this special place.

Work through the activities on your own or ask a sibling, parent, or an adult you know to join you. When you complete the activities, check them against the answer key in the back of the booklet. You can also record your own observations on the journal pages while out on the monument.

Return to the Goodwin Education Center, say the Junior Explorer pledge on the last page, sign the certificate, and you're on your way to exploring and caring for America's public lands.

Have fun!



**CARRIZO
PLAIN** NATIONAL
MONUMENT

Blunt-nosed
leopard lizard

CARRIZO PLAIN

Checklist

As you explore the monument, see how many things you can find on this list.

Natural/Cultural Features

- Painted Rock
- Soda Lake
- Overlook Hill
- Tractor
- San Andreas Fault

Flowers

- Goldenbush
- Tidy Tips
- Goldfields
- California Poppy
- Lupine

Reptiles/Insects

- Snake
- Lizard
- Beetle
- Spider Web
- Insect Buzzing
- Grasshopper

Birds

- Raven
- Golden Eagle
- Owl
- Roadrunner
- Condor*
- Bluebird
- Meadowlark
- Red Tailed Hawk
- Bird Singing or Calling

Mammals

- Tule Elk
- Pronghorn
- California Ground Squirrel
- Antelope Squirrel*
- Giant Kangaroo Rat*
- Kit Fox*
- Coyote
- Jack Rabbit
- Animal burrow

*Threatened or Endangered Species



*The closer you look...
...the more you see!*

**Junior Explorer
Field Guide**



Farming ON THE CARRIZO

Dry land farming was introduced on the Carrizo Plain in the late 1800s with an emphasis on growing barley and wheat. Explore the old farming equipment behind the Goodwin Education Center, and then find all of the words in the puzzle below.

W L T J W W I J T K Z T H Y B
J V R H A R V E S T E R E K T
W X E Q T X U I J R L A S H V
U A Z J E O D R G V G C A I R
T X S Y R T R E V A R T G B R
C T A H E I O H V A A O Z L S
P U S S B C S Z P P N R G B Y
E S F O C U D E Y Z C W U E M
T F G W B A R L E Y H U G X O
O Q S X O S S N B D W P O B S
Q U Q I U L P N S U E L X G I
R T F I D E P A N I A R G Q N
J L L A H K Q Q I Z Y U O K U

Find and circle all of these words:

BARLEY, SAUCITO, GRAIN, HARVESTER, DISK, PLOW, RANCH, SCRAPER, SEEDER, TRACTOR, TRAVER, WASHBURN, WATER, WHEAT

**CARRIZO
PLAIN** NATIONAL
MONUMENT

You can find even more historic farming equipment at Travers Ranch on the south end of the monument.

Goodwin

EDUCATION CENTER

Look for answers to the questions below as you explore the education center.

What materials did Native Americans use to make paint for pictographs?

What endangered species live on the Carrizo Plain?

Find California Juniper in the education center garden and draw a picture of it.

What is your favorite piece of farming equipment?

What was it used for?

**Junior Explorer
Field Guide**



Overlook HILL

The Carrizo Plain is bordered on either side by mountains. **Follow the path to the top of Overlook Hill to answer the questions below.**

What two mountain ranges border the Carrizo Plain?

What is the highest peak in the Temblor Range?

The highest point in the Calientes is Caliente Peak at 5,106 feet.

Is Caliente Peak the highest peak in San Luis Obispo County? (Yes / No)



List three endangered animal species that live on the monument.

Soda Lake

HABITATS

The plants that grow around Soda Lake are adapted to a salty environment. In ecology, the place each plant or animal lives is called its habitat. **Draw a line to connect the plants and animals to their habitat.**

Tule Elk



Saltbush



Pronghorn



Fairy Shrimp



Hills and Mountains

Flat, Open Land

Vernal Pool

Alkaline Soil

**Junior Explorer
Field Guide**



Who WAS HERE?

We can learn a lot from the tracks that people and animals leave behind. They may only spend a few moments in one place, but their tracks may remain for days.

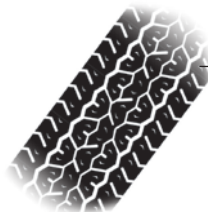
Can you identify which animals made the tracks below?



RABBIT, COYOTE, BOBCAT, KIT FOX, GROUND SQUIRREL,
GIANT KANGAROO RAT, PRONGHORN ANTELOPE

Can you guess what made these tracks?

**CARRIZO
PLAIN** NATIONAL
MONUMENT



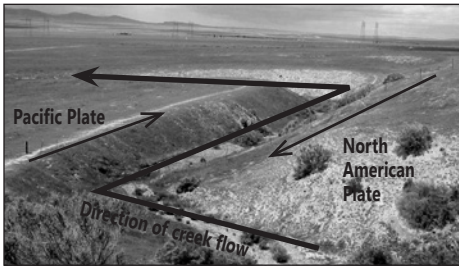
SAN ANDREAS *Fault*

Explore the San Andreas fault from the Wallace Creek interpretive trail. Wallace Creek did not always look the way it does today. If you study the path of Wallace Creek, and think about how the San Andreas fault behaves and moves, you might be able to guess what the creek looked like in the past.

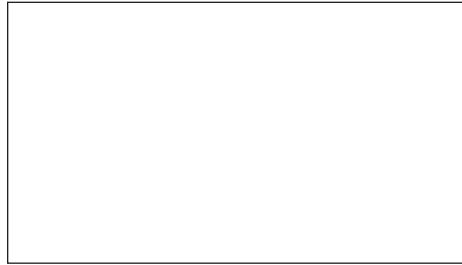
Below is a drawing of what Wallace Creek looks like today.

Draw a picture of Wallace Creek *before* the modern channel was cut.

Present day



Before the modern channel



Use the interpretive signs or Wallace Creek brochure to complete the sentences below.

1. The fault is about _____ miles long, stretching from Cape Mendocino to the Salton Sea.
2. On average, the Pacific plate is moving past the North American plate at a rate of _____ inches per year—about as fast as a fingernail grows.
3. Geologists use the term _____ to describe the direction the fault moves.

**Junior Explorer
Field Guide**

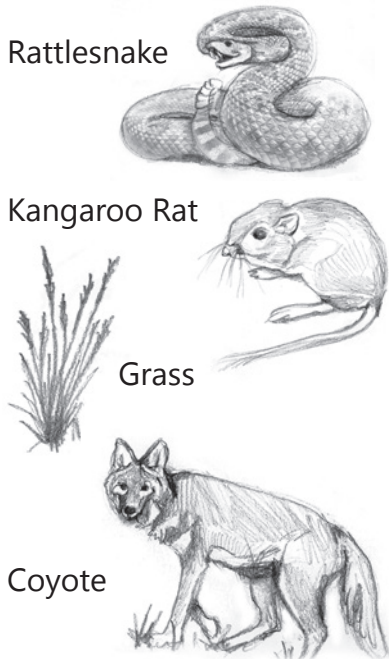


CARRIZO PLAIN

Food Chain

A food chain shows the flow of food energy through an ecosystem. A food chain begins with a **producer**, usually a green plant. Producers are eaten by **primary consumers** (plant eating herbivores) which are eaten by **secondary consumers** (meat eating carnivores), some of which may in turn be eaten by **tertiary consumers** (the top carnivore in the chain).

Draw a line to match the plant or animal below to its place in the food chain.



4. Tertiary Consumer
- ↑
3. Secondary Consumer
- ↑
2. Primary Consumer
- ↑
1. Producer

JUNIOR EXPLORER

Word Match

Read the words and definitions below. **Draw a line to match the words with the correct definitions.**

- | | |
|---------------|--|
| 1. Habitat | A. Changes that help plants and animals better survive their environments |
| 2. Ecology | B. Stories, places, and property that are passed to us from our ancestors |
| 3. Adaptation | C. Variety in nature or culture |
| 4. Diversity | D. A record of the past |
| 5. Culture | E. When a group of people share a language, music, type of food, and a special way of doing things |
| 6. Heritage | F. The study of the relationship between living things and their environment |
| 7. History | G. The arrangement of food, water, shelter, and space suitable to a plant or animal's needs |



People OF THE PAST

Many people have called the Carrizo Plain their home. As you explore the area, look for evidence of those who have once lived here.

Can you name one of the Native American tribes that used the Carrizo?

Who are some of the other people or groups that have lived in the Carrizo Plain?

What did they eat while they lived here?

Draw a picture of a structure they built while living on the plain.



Draw a picture of a tool they used.

Journal

What did you learn? Where did you hike? What animals did you see? Record today's date, what the weather is like, and add notes to your journal about what you did today.

Date _____

Weather _____

I saw _____

I heard _____

I smelled _____

I learned _____



Bureau of Land Management
Junior Explorer



As a Bureau of Land Management Junior Explorer,
I promise to:

do all I can to help preserve and protect the natural and cultural resources
on our public lands,

be aware of how my actions can affect other living things and
the evidence of our past,

keep learning about the importance of nature and our heritage, and

share what I have learned with others!

Date

Explorer Signature



ANSWER Key

Page 3



Page 4

Paint Materials:
Hematite for red. Wood charcoal for black.
Diatomaceous or gypsum for white.

Endangered Species:
Giant kangaroo rat, blunt-nosed leopard lizard, San
Joaquin kit fox, San Joaquin antelope squirrel.

Page 5

Mountain Ranges:
Temblor Mountains, Caliente Mountains

Highest Peak: Midway Peak

**CARRIZO
PLAIN** NATIONAL
MONUMENT

Caliente Peak: Yes

Endangered Animal Species:
San Joaquin kit fox, Giant kangaroo rat, Blunt-nosed
leopard lizard, San Joaquin antelope squirrel

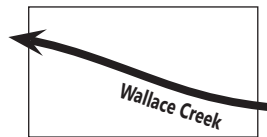
Page 6

Tule Elk—Hills and Mountains
Saltbush—Alkaline Soil
Pronghorn—Flat, open land
Fairy Shrimp—Vernal Pool

Page 7



Page 8



1. About 700 miles long
2. 1.3 inches per year
3. right-lateral

ANSWER

Key *(continued)*

Page 9

Grass—1. Producer

Kangaroo Rat—2. Primary Consumer

Rattlesnake—3. Secondary Consumer

Coyote—4. Tertiary Consumer

Page 10

- | | | |
|------|------|------|
| 1. G | 4. C | 7. D |
| 2. F | 5. E | |
| 3. A | 6. B | |

Page 11

Native American Tribes:
Chumash, Yokuts, Salinian

Other people or groups:
Farmers, Ranchers

Foods:
Elk, antelope, small game, rabbits, acorns, etc.



CARRIZO PLAIN

Wildflowers



Tidy tips



Poppies & Lupine



Goldfields



Baby blue-eyes



Fiddleneck



Shooting star



Thistle sage

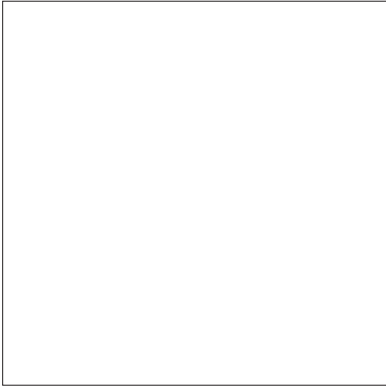


Owl's clover



**CARRIZO
PLAIN**

**NATIONAL
MONUMENT**



Passport stamp available at the
Goodwin Education Center



**Bureau of Land Management
Bakersfield Field Office**

3801 Pegasus Drive

Bakersfield, CA 93308

Phone: (661) 391-6000

www.blm.gov/ca/bakersfield



BLM/CA/GI-2014/006+8600