



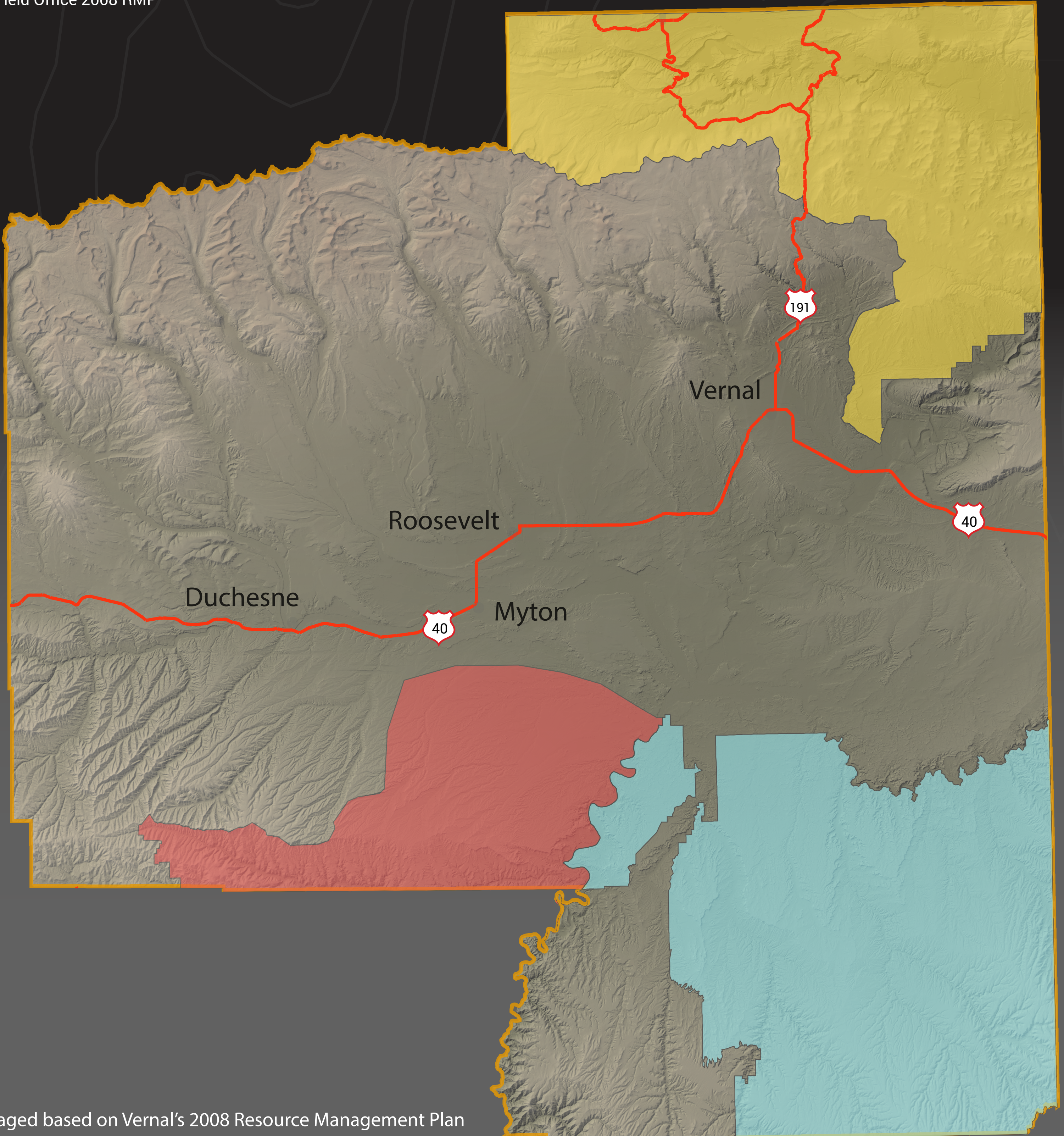
Vernal Travel Management Areas

BLM Field Office
170 S 500 E, Vernal, Ut 84078
Phone: 435-781-4400



Travel Management Areas

- Dinosaur North
- Nine Mile Canyon (Vernal)
- Book Cliffs
- Field Office 2008 RMP*
- Field Office Boundary



*Area is managed based on Vernal's 2008 Resource Management Plan

DISCLAIMER: While the Department of the Interior strives to make the information on this website as timely and accurate as possible, the department makes no claims, promises, or guarantees about the accuracy, completeness, or adequacy of the contents of this site, and expressly disclaims liability for errors and omissions in the contents of this site. No warranty of any kind, implied, expressed, or statutory, including but not limited to the warranties of non-infringement of third party rights, title, merchantability, fitness for a particular purpose, or freedom from computer virus, is given with respect to the contents of this website or its links to other internet resources. Produced Jan. 2018.