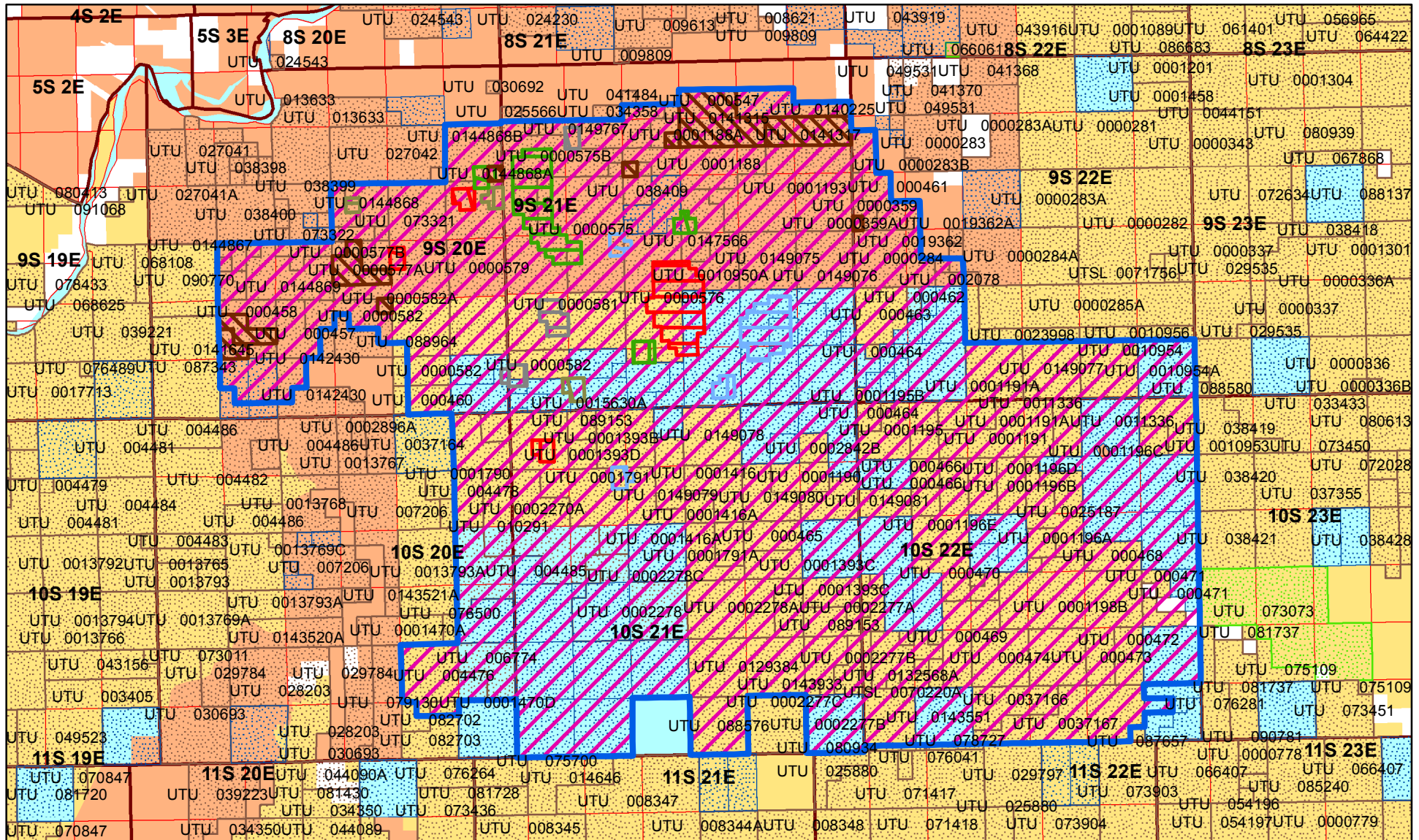


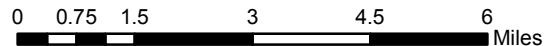
# NATURAL BUTTES

UINTAH County of Utah

Effective Date: 1/5/1968



<b>PA= Formation Name</b>	WASATCH-MESAVERDE PA UTU 063047A	<b>UTU 063047X</b>	GREEN RIVER M UTU 088574M	Oil and Gas Unit Agreement
GREEN RIVER A UTU 088574A	GREEN RIVER H UTU 088574H	Acres: 2320.0	GREEN RIVER N UTU 088574N	Uncommitted Unit Tracts
GREEN RIVER C-E-F UTU 088574AA	GREEN RIVER I UTU 088574I	GREEN RIVER R UTU 088574R	GREEN RIVER O UTU 088574O	<b>Oil and Gas Lease Parcels</b>
GREEN RIVER B UTU 088574B	GREEN RIVER J UTU 088574J	GREEN RIVER S UTU 088574S	GREEN RIVER P UTU 088574P	Authorized Oil and Gas Lease Parcels
GREEN RIVER D UTU 088574D	GREEN RIVER K UTU 088574K	GREEN RIVER T UTU 088574T	GREEN RIVER Q UTU 088574Q	Pending Oil and Gas Lease Parcels
GREEN RIVER G UTU 088574G	GREEN RIVER L UTU 088574L			SITLA Oil and Gas Lease Parcels



Date: 1/16/2018

