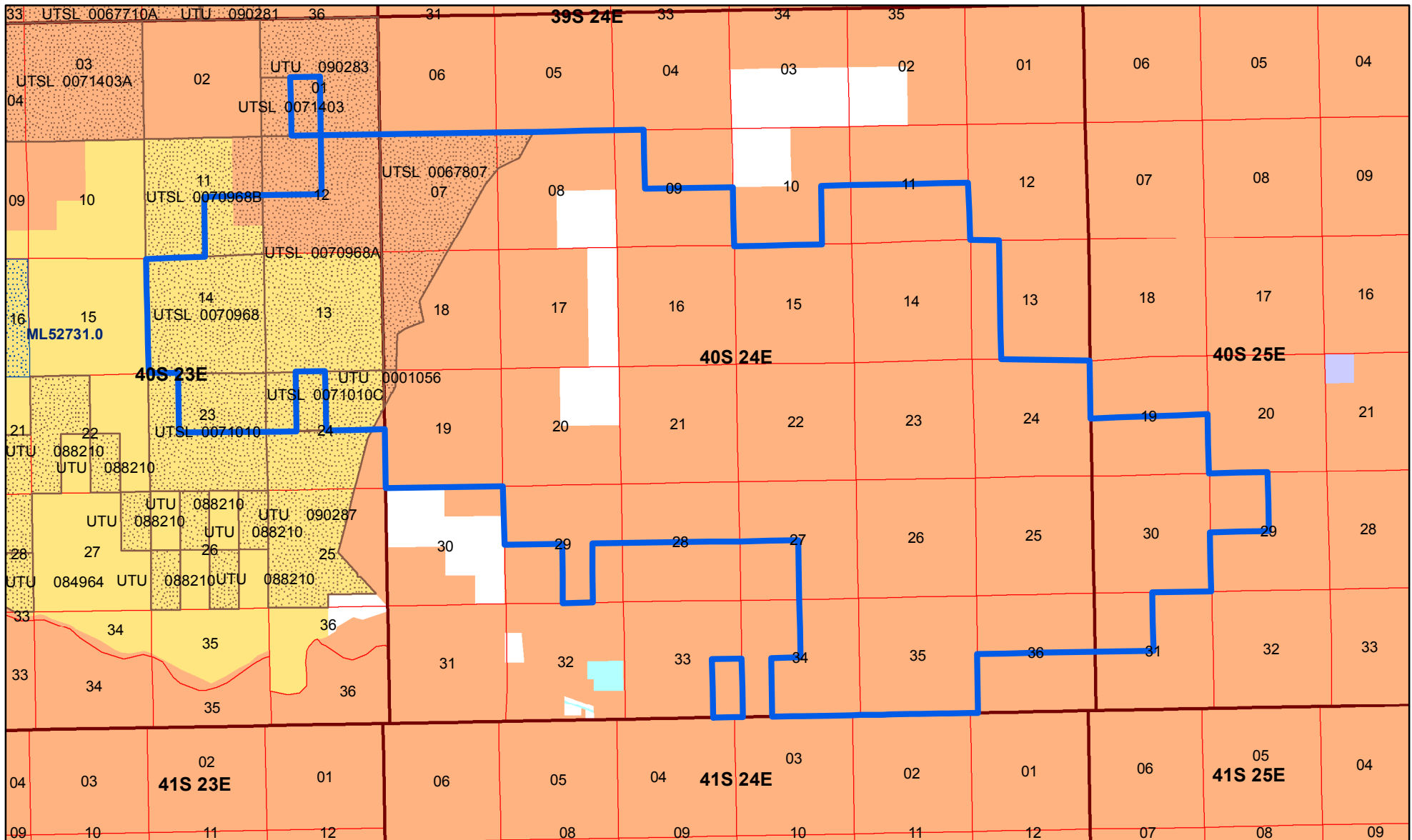


ANETH (NAVAJO)

SAN JUAN County of Utah

Effective Date: 9/1/1961



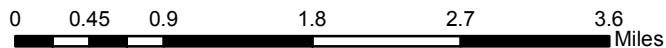
Oil and Gas Unit Agreement

Oil and Gas Lease Parcels

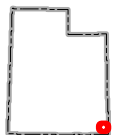
- Authorized Oil and Gas Lease Parcels
- Pending Oil and Gas Lease Parcels
- SITLA Oil and Gas Lease Parcels

UTU 068927A

Acres: 16950.55



- Bureau of Land Management (BLM)
- US Forest Service (USFS)
- National Park Service (NPS)
- Indian Reservation (IR)
- State
- Private
- Township
- Section

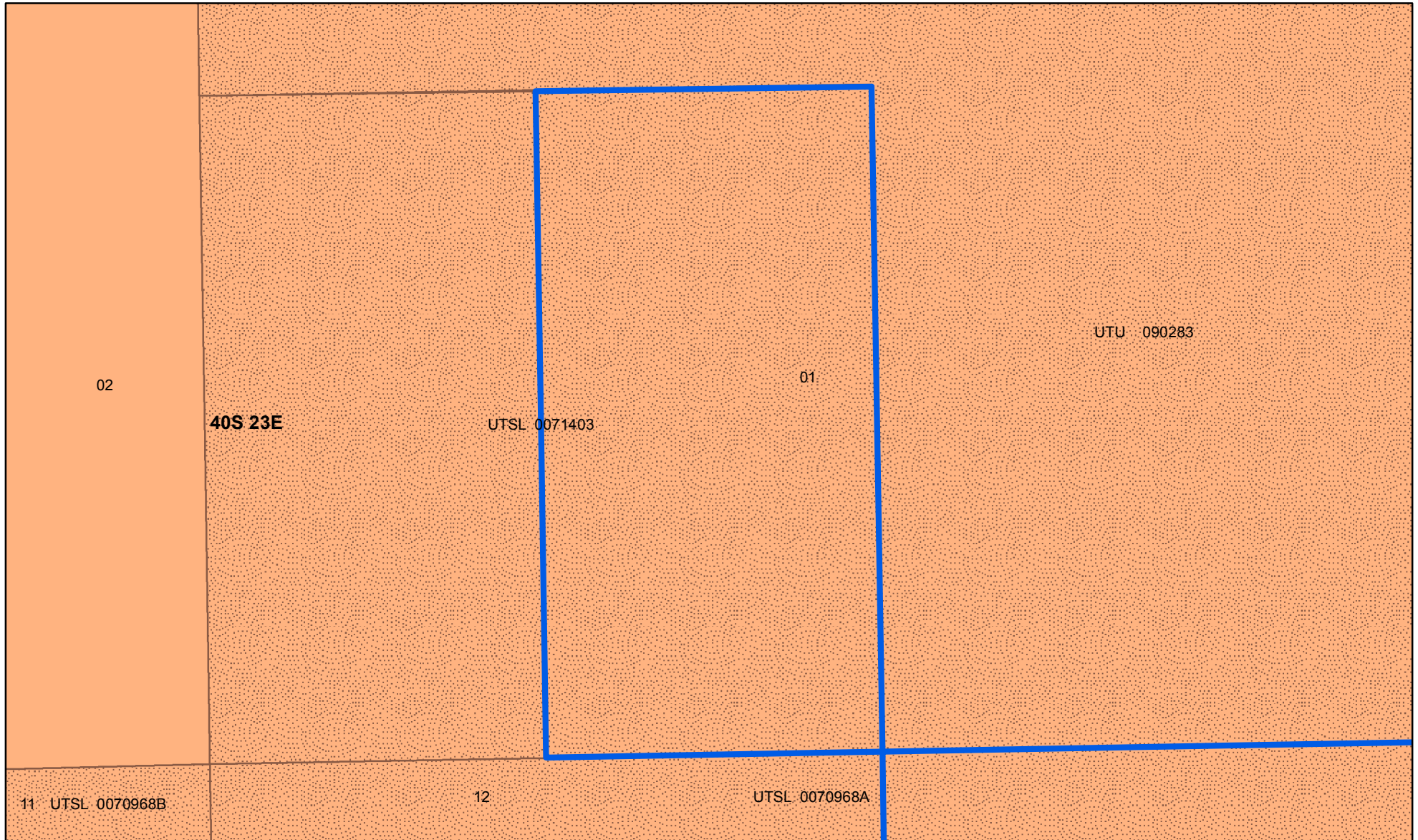


Date: 1/4/2018

ANETH (NAVAJO)

SAN JUAN County of Utah

Effective Date: 9/1/1961



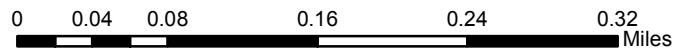
Oil and Gas Unit Agreement

Oil and Gas Lease Parcels

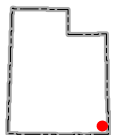
- Authorized Oil and Gas Lease Parcels
- Pending Oil and Gas Lease Parcels
- SITLA Oil and Gas Lease Parcels

UTU 068927A

Acres: 16950.55



- Bureau of Land Management (BLM)
- US Forest Service (USFS)
- National Park Service (NPS)
- Indian Reservation (IR)
- State
- Private
- Township
- Section

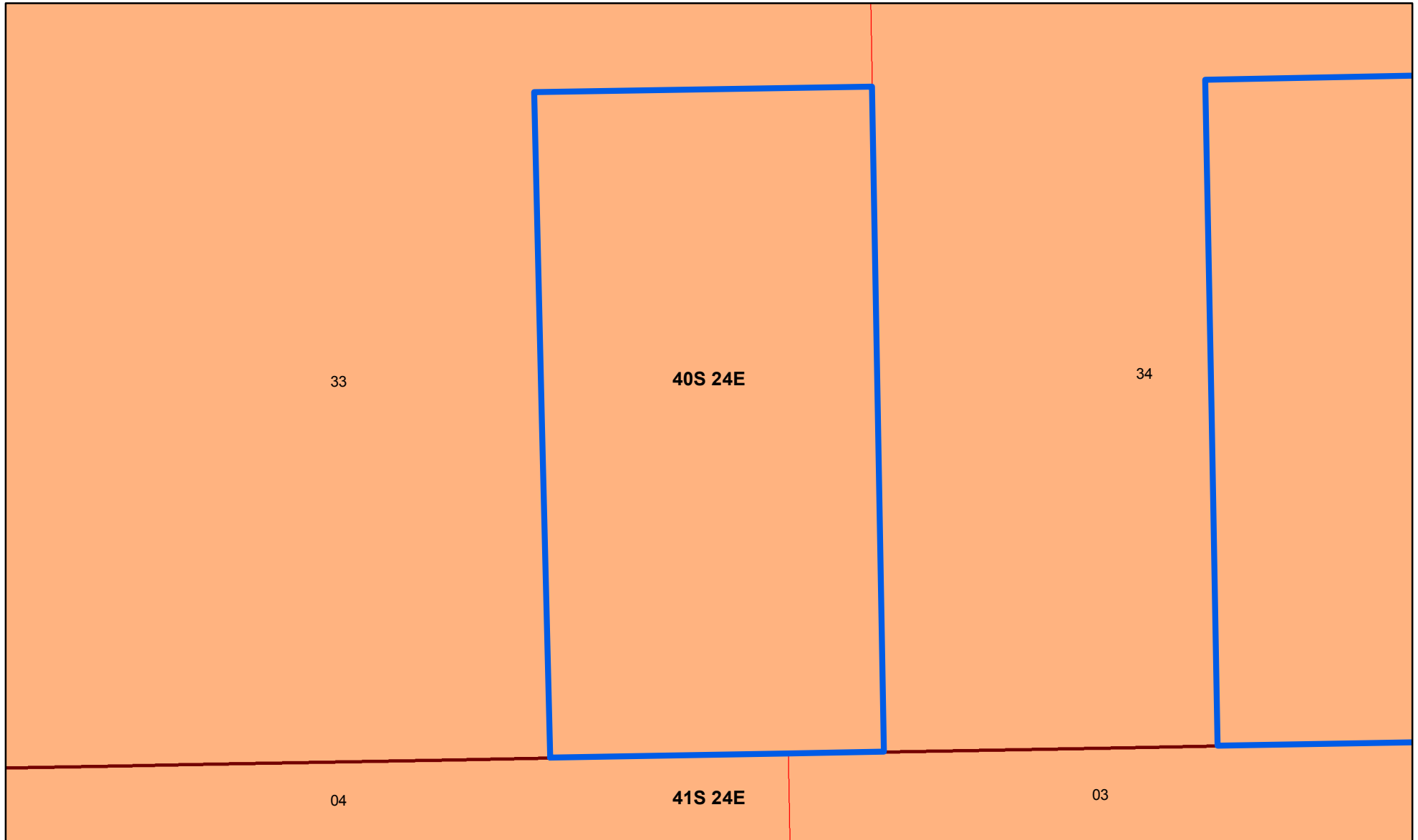


Date: 1/4/2018

ANETH (NAVAJO)

SAN JUAN County of Utah

Effective Date: 9/1/1961



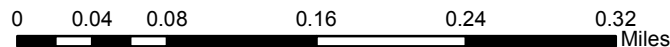
Oil and Gas Unit Agreement

Oil and Gas Lease Parcels

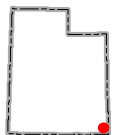
- Authorized Oil and Gas Lease Parcels
- Pending Oil and Gas Lease Parcels
- SITLA Oil and Gas Lease Parcels

UTU 068927A

Acres: 16950.55



- Bureau of Land Management (BLM)
- US Forest Service (USFS)
- National Park Service (NPS)
- Indian Reservation (IR)
- State
- Private
- Township
- Section



Date: 1/4/2018