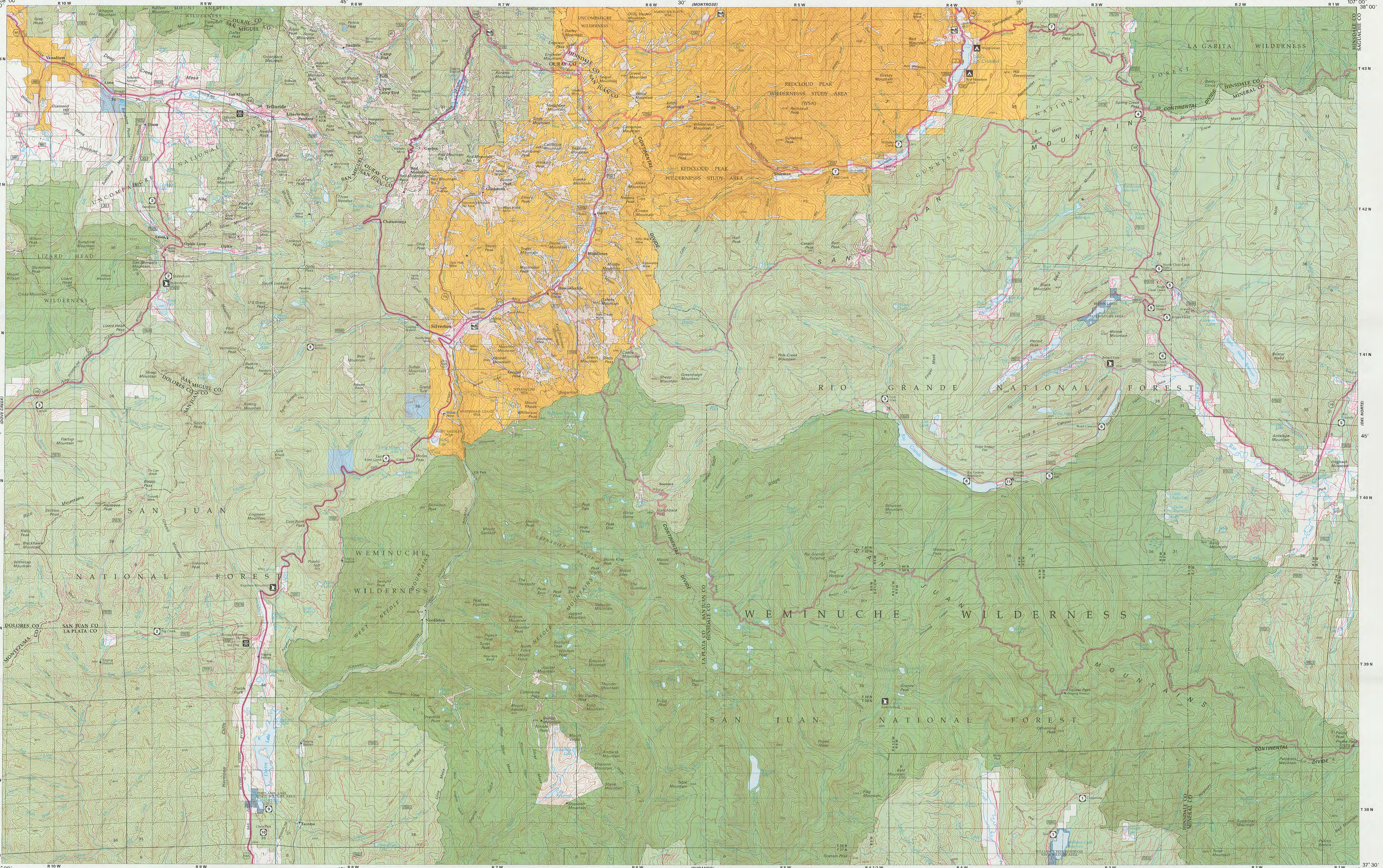


COLORADO
Silverton

Surface Management Status
1:100,000-Scale Topographic Map

2012

U.S. DEPARTMENT OF THE INTERIOR
BUREAU OF LAND MANAGEMENT



Edited and published by the Bureau of Land Management National Operations Center in cooperation with the Bureau of Land Management Colorado State Office. Planimetry partially revised by Bureau of Land Management from various source materials. Revised information not field checked.

Public Land Survey System derived from the Bureau of Land Management Geographic Coordinate Data Base. Land status and other source information compiled by Bureau of Land Management. Hypsography, hydrography, boundary, and transportation data derived from U.S. Geological Survey 1:100,000 scale digital line graphs. Digital line graphs based on 1:100,000 scale quadrangle map dated 1982.

Lambert Conformal Conic Projection
North American Datum 1983
National Geodetic Vertical Datum of 1929

There may be private inholdings within the boundaries of the National or State reservations shown on this map. Land lines are omitted in areas of extensive tract surveys.

THIS MAP COMPLEES WITH NATIONAL MAP ACCURACY STANDARDS

In general, BLM Public Lands are open to a number of recreational activities in addition to those that may be highlighted on the map. These activities include camping, fishing, hiking, and hunting. Certain restrictions may apply. Contact appropriate BLM State, District, or Field Office for more information.

CONVERSION TABLE

METERS	FEET
2250	7382
2500	8202
2750	9022
3000	9842
3250	10663
3500	11483
3750	12303
4000	13123
4250	13943
4500	14763

To convert meters to feet multiply by 3.2808
To convert feet to meters multiply by 0.3048

DECLINATION DIAGRAM

2012 Magnetic declination (MD) is based on the center of the map. Diagram

ADJOINING MAPS

	1	2	3
North	4	5	6
East	7	8	

1 Nade
2 Montrose
3 Saguache
4 Dove Creek
5 Dolores
6 Cortez
7 Durango
8 Antonito

FOR SALE BY
U.S. DEPARTMENT OF THE INTERIOR
BUREAU OF LAND MANAGEMENT
COLORADO STATE OFFICE
LAKEWOOD, CO 80215

U.S. GEOLOGICAL SURVEY
DENVER, CO 80225

ISBN 978-1-4113-3993-2

TOPOGRAPHIC MAP SYMBOLS

- Primary highway, hard surface
- Secondary highway, hard surface
- Light duty, hard, or aggregate surface
- Streets, roads graded/drainage/natural surface
- 4WD, rough bleeded or two-tracked surface
- Tail float, pack, bicycle, or as labeled
- Route marker: Interstate, U.S. State
- Railroad: standard gage; narrow gage
- Bridge: overpass, underpass
- Turned road; railroad
- Built up area, locality, elevation
- Airport: landing field, landing strip
- National boundary
- State boundary
- County boundary
- National or State reservation boundary
- Land grant boundary
- U.S. public lands survey; range, township; section
- Range, township; section line, protected
- Power transmission line; pipeline
- Dam, dam with lock
- Cemetery: building
- Windmill; water well; spring
- Mine shaft; adit or cave; mine, quarry; gravel pit
- Campground; picnic area; US location monument
- Basin; cliff dwelling
- Distorted surface: strip mine, quarry, sand
- Contours: index; intermediate; supplementary
- Contour interval change
- Stream, lake, perennial; intermittent
- Rapids; large and small; falls, large and small
- Area to be submerged; marsh, swamp
- Land subject to controlled inundation
- Special area boundary
- Recreation area boundary
- National trail; back country; scenic byway

RECREATIONAL SYMBOL LEGEND

- Campground
- Trailer Camping
- Group Campground
- Picnic Area
- Hiking Trail
- Fishing Trail
- Motorboating
- Horse Trail
- Restrooms
- Drinking Water
- BLM Back Country Byway
- Ranger Station
- Other Forest Service Facility
- Winter Recreation
- Fee Area

RECREATION SITES, TRAILS AND AREAS LEGEND

- Public Lands and Monuments (Admin by BLM)
- National Forest (Admin by USFS)
- National Wildlife Refuge & Mgmt Areas (Admin by USFWS)
- National Parks and Monuments (Admin by USNPS)
- Indian Land or Reservation
- Public Lands Wilderness (Admin by BLM)
- National Forest Wilderness (Admin by USFS)
- National Wildlife Refuge Wilderness (Admin by USFWS)
- National Parks and Monuments Wilderness (Admin by USNPS)
- Other Federal Lands (Admin by Titled Agency)
- Public Lands Wilderness Study Area (Admin by BLM)
- National Grasslands (Admin by USFS)
- Military Reservation/Corps of Engineers (Admin by DOD)
- State Land
- State, County, City, Wildlife, Park and Outdoor Recreation Areas
- Bankhead-Jones Land Use Land (Admin by Acquiring Agency)
- Oregon & California Land (OCL)
- Cool Bay Wagon Road (CBWR)
- Bureau of Reclamation Land (Admin by USBOR)
- State Land Wilderness
- Private Land

LAND STATUS LEGEND

- Public Lands Wilderness Study Area (Admin by BLM)
- National Grasslands (Admin by USFS)
- Military Reservation/Corps of Engineers (Admin by DOD)
- State Land
- State, County, City, Wildlife, Park and Outdoor Recreation Areas
- Bankhead-Jones Land Use Land (Admin by Acquiring Agency)
- Oregon & California Land (OCL)
- Cool Bay Wagon Road (CBWR)
- Bureau of Reclamation Land (Admin by USBOR)
- State Land Wilderness
- Private Land

SPECIAL SYMBOL LEGEND

- Route / Trail Marker
- Bureau of Land Management
- Forest Service
- National Park
- Indian Reservation
- County
- National Wild and Scenic Rivers
- Roads with Public Access

Note: Roads Partly Revised 2012

TOWNSHIP DIAGRAM

	6	5	4	3	2	1
7	8	9	10	11	12	
18	17	16	15	14	13	
19	20	21	22	23	24	
30	29	28	27	26	25	
31	32	33	34	35	36	

INDEX TO 1:24,000-SCALE MAPS

	1	2	3	4	5	6	7	8
9	10	11	12	13	14	15	16	
17	18	19	20	21	22	23	24	
25	26	27	28	29	30	31	32	

- 1 Gray Head
- 2 Telluride
- 3 Ironton
- 4 Handies Peak
- 5 Redcloud Peak
- 6 Lake San Cristobal
- 7 Skungulion Pass
- 8 Baldy Cones
- 9 Mount Wilson
- 10 Ophir
- 11 Silverton
- 12 Hewardville
- 13 Pole Creek Mountain
- 14 Finger Mesa
- 15 Hermit Lakes
- 16 Bristol Head
- 17 Hermosa Peak
- 18 Engineer Mountain
- 19 Stroudman Peak
- 20 Storm King Peak
- 21 Rio Grande Pyramid
- 22 Weminuche Peak
- 23 Little Spaw Creek
- 24 Workman Creek
- 25 Elk Creek
- 26 Electric Lake
- 27 Mountain View Crest
- 28 Columbine Pass
- 29 Emerald Lake
- 30 Granite Lake
- 31 Cataract Pass
- 32 Palomino Mountain

NOTE TO MAP USERS

The surface and mineral ownership records published are general planning and management tools. Some of the lands, surface and mineral rights, may have been transferred to the public domain. No warranty is made by the BLM for use of the map for purposes not intended by the BLM. The official land records in the respective offices of the Bureau of Land Management or other responsible Federal agencies should be used for legal purposes. Data on any specific tract of land in question in the BLM maps should be reported to the respective Bureau of Land Management offices from which the maps were obtained.

PUBLIC ACCESS

Roads crossing public lands may be traveled by the public unless closed by signing or notice by the land management agency. Public lands interlocked by private lands may not have public access. Permission is required from the private landowner to cross private land, unless access is provided by a Federal, State, or County road, or a BLM road with legal access.