



STRATEGIC PLAN

SOUTHERN NEVADA PUBLIC LAND MANAGEMENT ACT

INTERIOR REGION 8
LOWER COLORADO BASIN

ARIZONA - CALIFORNIA* - NEVADA*
*PARTIAL



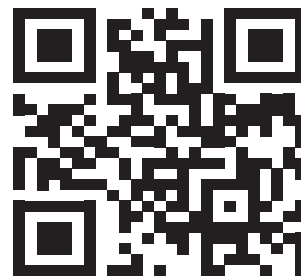
INTERIOR REGION 10
CALIFORNIA - GREAT BASIN

CALIFORNIA* - NEVADA* - OREGON*
*PARTIAL



This document was prepared by:
Bureau of Land Management
Southern Nevada District Office
Las Vegas, Nevada

WWW.BLM.GOV/SNPLMA



Front/Back Cover Photo: Walden Cabin in Pahrangat (BLM)
1st Spread Photo: Historic Railroad Trail Tunnel at Lake Mead NRA (BLM)
Middle Spread Photo: Cyclist on River Mountain Loop Trail (BLM)

TABLE OF CONTENTS

Message from the Executive Committee	4
Strategic Plan Focus	5
Mission	5
Values	5
Vision	5
Goals	6
GOAL 1: Sustain the quality of the outdoor environment by conserving, preserving, and restoring natural, cultural, and historical resources	6
Strategic Objective #1: Conserve and Restore Natural Resource	6
Strategic Objective#2: Preserve Cultural and Historical Resources	6
Strategic Objective #3: Promote Project Connectivity and Sustainability	6
Strategic Objective #4 Protect Communities	6
Strategic Objective #5: Promote Education	6
GOAL 2: Improve the quality of life for all publics in urban and rural communities by enhancing recreational opportunities that connect people with the outdoor environment	7
Strategic Objective #6: Enhance Recreational Opportunities	7
Strategic Objective #7: Promote Education	7
Strategic Objective #8: Promote Project Connectivity and Sustainability	7
Strategic Objective #9: Encourage Sustainable Development	7
Milestones	6-7
Category-Specific Strategic Guidance	8
Capital Improvement	8
Conservation Initiatives	9
Eastern Nevada Landscape Restoration Project	9
Environmentally Sensitive Land Acquisitions	9
Hazardous Fuels Reduction and Wildfire Prevention	10
Multi-Species Habitat Conservation Plan	10
Parks, Trails, and Natural Areas	11

MESSAGE FROM THE EXECUTIVE COMMITTEE

With the passage of the Southern Nevada Public Land Management Act (SNPLMA) (Public Law 105-263) in 1998, the Congress and the President set into motion a program of work that has resulted in an unprecedented level of funding for important projects, crucial economic development, and new employment opportunities through the sale of public land in the Las Vegas Valley. The Act allows for the creation of local parks, trails, and natural areas; the acquisition of environmentally sensitive lands; capital improvements on certain Federal lands in Nevada

and Arizona; and conservation, restoration, and fuels treatment projects in Nevada and throughout the Lake Tahoe Basin. These projects are implemented by the eligible partner agencies to benefit communities and public lands throughout the State of Nevada.

The Executive Committee and its partners recognize the importance of these funds and continue to be responsible stewards. Collaboration has been a hallmark of the success of both the sale of land in the Las Vegas Valley and the management of the resulting revenue through

wise investments in project work across Nevada.

The SNPLMA Executive Committee is pleased to present this strategic plan. The strategic plan was developed with input from our partners and is intended to increase transparency. This plan will guide the SNPLMA Program over the next five years of implementation. The values, mission, and vision identified in this plan focus the efforts of the SNPLMA Program toward public benefit of enduring value and relevance to Nevada's citizens and visitors.



A handwritten signature in blue ink, appearing to read "Jon K. Raby".

**Jon K. Raby, Nevada State Director
Bureau of Land Management**

A handwritten date in blue ink, "September 30, 2019".

Date



A handwritten signature in blue ink, appearing to read "Stanley J. Austin".

**Stanley J. Austin, Pacific West Regional Director
National Park Service**

A handwritten date in blue ink, "10/10/19".

Date



A handwritten signature in blue ink, appearing to read "Paul Souza".

**Paul Souza, Pacific Southwest Regional Director
United States Fish And Wildlife Service**

A handwritten date in blue ink, "11-8-19".

Date



A handwritten signature in blue ink, appearing to read "Nora B. Rasure".

**Nora B. Rasure, Regional Forester
United States Forest Service, Intermountain Region**

A handwritten date in blue ink, "11-19-19".

Date

STRATEGIC PLAN FOCUS

The SNPLMA Mission, Values, and Vision provide guidance for program management and implementation by encouraging projects that will ensure a legacy. The strategic focus enhances the outdoor environment access for the public's use and enjoyment through the Goals, Objectives, and Milestones of the SNPLMA projects. All projects should contribute to one or more of the values of sustainability, connectivity, and community.

Mission

To transfer lands out of federal ownership and to protect and maintain habitat ecosystems by working with our partners to enhance outdoor environment access for the public's enjoyment.

Values

This five-year Strategic Plan focuses implementation of the SNPLMA Program on three values: sustainability, connectivity, and community.

Sustainability - Provide benefits by emphasizing healthy and properly functioning ecosystems as well as durability, relevancy, and shared support.

Projects that conserve, restore, or maintain natural resources to enhance outdoor environment access for the public's enjoyment, often include a stewardship component to broaden support by sharing responsibility or operations and maintenance. These projects will continue to remain relevant by providing a benefit beyond the existence of the SNPLMA, even in the face of changing demographics or environmental conditions. They strive to reduce long-term costs and minimize the human impact on the environment.

Connectivity - Link people to nature and to recreational opportunities, and unite important places across the landscape.

Projects focus on outreach and environmental education, and provide recreational opportunities by linking population centers, recreational facilities, and natural landscapes. Land acquisition or habitat restoration projects can encourage people to connect with habitats, migratory corridors, or protected areas to appreciate and care for their environment.

Community - Improve quality of life for the human community and protect the integrity of biological communities.

Projects that provide outdoor recreation opportunities, foster partnerships, and improve the quality of life through economic health or protection of health through integrity of biological communities and safety of the public; especially for underserved human communities.

Vision

Provide the public with naturally functioning, sustainable landscapes and recreation opportunities for their enjoyment, benefit, and stewardship.

GOALS

The SNPLMA Goals are what we strive to accomplish in support of the SNPLMA vision and mission through project implementation. These goals will be achieved through applying the values of sustainability, connectivity, and community to the ranking of project nominations, thereby ensuring alignment of project funding to strategic priorities.

GOAL 1: Sustain the quality of the outdoor environment by conserving, preserving, and restoring natural, cultural, and historical resources

Strategic Objective #1: Conserve and Restore Natural Resources

Maintain or increase the quality of natural resources and protect their ecological integrity and sustainability

Milestones:

- *Increase or improve the natural resource base (e.g., habitat), with a focus on regional landscape habitat restoration*
- *Protect threatened, endangered, and sensitive species and their habitat*
- *Promote actions to avoid listing of sensitive species as threatened or endangered (e.g., restoration of Greater Sage-Grouse habitat)*
- *Support the value of science and research by increasing the effectiveness of conserving and restoring sustainable natural resources*

Strategic Objective #2: Preserve Cultural and Historical Resources

Document, preserve, and interpret cultural resources

Milestones:

- *Restore at-risk resources*
- *Protect the integrity of significant resource values*
- *Encourage volunteer site stewardship as a way to build a meaningful conservation stewardship legacy and increase protection and sustainability through promoting public education and understanding of cultural and historical resources*

Strategic Objective #3: Promote Project Connectivity and Sustainability

Integrate and connect sustainable projects across agencies, landscapes, and previous projects that are sustainable within the outdoor environment

Milestones:

- *Demonstrate the connection between prior, and new projects, to the habitat and ecosystems across the regional landscapes*
- *Improve coordination among federal, state and local agencies to facilitate resource sharing, joint problem solving, and efficient decision-making to enhance connectivity*
- *Promote connectivity between new or existing recreation opportunities and other community facilities, accommodations, and services (e.g., community centers, schools, or mass transit)*
- *Connect and integrate projects from previous and new rounds that are sustainable within the regional landscape recreational environment*

Strategic Objective #4: Protect Communities

Manage resources to improve the safety of communities

Milestones:

- *Reduce the risk of catastrophic wildfires by removing hazardous fuels*
- *Support resource protection and public service through efficient and effective law enforcement programs*
- *Avoid, reduce or provide on-site mitigation for hazardous sites (e.g., abandoned mine lands, illegal desert dumping/litter)*

Strategic Objective #5: Promote Education

Provide opportunities to improve the public's connection with natural, cultural, and historical resources through education

Milestones:

- *Use Federal, State, local and regional government lands as learning classrooms to help develop the next generation of environmental understanding and advocacy (e.g., increase participation with school districts, local special interest groups, and site stewardship programs)*
- *Increase natural, cultural, and historical resource interpretation (e.g., informational signage, kiosks, and educational programs)*

GOAL 2: Improve the quality of life for all public in urban and rural communities by enhancing recreational opportunities that connect people with the outdoor environment

Strategic Objective #6: Enhance Recreational Opportunities

Provide recreational opportunities and improve access to those opportunities on Federal, State, local and regional government lands by increasing the availability and quality of public recreation

Milestones:

- *Protect or improve the integrity of environmental, cultural, historical, educational, community, recreational, and open space resources to enhance the quality of the human experience*
- *Foster relationships through dialogue with the public to enhance access to the outdoor environment for the public's enjoyment*
- *Develop a recreational environment of diverse and holistic parks, trails, and natural areas*
- *Promote projects that are representative of the environment (e.g., designs that are aesthetically cohesive with the surrounding environment)*

Strategic Objective #7: Encourage Sustainable Development Promote green sustainable design and construction

Milestones:

- *Promote projects that encourage renewable energy construction methods (e.g., designs that are green, or meet entity policy, or meet LEED standards, or promote water conservation, and are energy independent)*

CATEGORY-SPECIFIC STRATEGIC GUIDANCE

The category strategic guidance has been developed with input from the SNPLMA Program partners and stakeholders, the Category Subgroups, Partners Working Group, and Executive Committee. The Department of the Interior and United States Forest Service priorities will guide the project nomination and selection process. In addition, this guidance tiers from the Goals, Objectives, and Milestones in this Strategic Plan.



Hoover Dam Spillway House (BLM)

Capital Improvement

Capital Improvements are at the Lake Mead National Recreation Area, the Desert National Wildlife Refuge Complex, the Red Rock Canyon National Conservation Area, the Great Basin National Park, the Spring Mountains National Recreation Area, and other areas administered by the BLM or the United States Forest Service in Clark, Lincoln, and White Pine Counties. Projects include repair or rehabilitation of existing infrastructure, construction of new facilities, and other improvements needed to protect resource values.

The Capital Improvements category will promote projects that conserve, preserve, restore, or modernize natural, cultural, or historic resources to ensure availability of those resources for future generations; provide recreational

opportunities that link population centers, recreation facilities, and the user to the outdoors and natural landscapes; improve the quality of life through outdoor recreation opportunities, especially for underserved communities; and

ensure open and improved access to federal lands. All projects should be designed and scaled to ensure sustainable future operations and maintenance (e.g., low operations and maintenance expenses).



Red Springs Boardwalk (BLM)

Conservation Initiatives

Conservation Initiatives promote conservation and improve the quality of Federal land and resource values in Clark, Lincoln, and White Pine Counties, and Carson City, Nevada. Conservation Initiatives include planning, implementation, and monitoring. They also include programs critical to protecting and sustaining resources in Nevada, such as litter and desert dumping clean up and prevention, natural and cultural resource protection, recreation, environmental education and interpretation, and habitat restoration.



Black Canyon Petroglyphs (BLM)

The Conservation Initiatives category will maintain trust and integrity as a good neighbor by engaging certain communities in the state of Nevada. Priority projects will support habitat enhancement, cultural resources, and/or public health and safety needs through actions to conserve and sustain healthy and resilient landscapes; improve the quality of life for humans by protecting the integrity of biological communities or cultural sites; and connect people to nature and recreational opportunities.

Eastern Nevada Landscape Restoration Project

The Eastern Nevada Landscape Restoration Project category supports projects that promote resilient and healthy ecosystems within the Great Basin ecosystem in White Pine and Lincoln Counties. Projects include planning, implementation, research, monitoring, environmental analysis and associated documentation, and delivery of programs such as fire management and improvements to forests, woodlands, and rangelands. Research projects must demonstrate a practical application to the management of Federal lands in order to be accepted for consideration.

The Eastern Nevada Landscape Restoration Project category will focus on activities that create and/or enhance strong and healthy native shrub ecosystems within the eligible portions of the Great Basin. Projects will be implemented that change the vegetation composition and/or structure to modify potential fire behavior for the purpose of improving fire suppression effectiveness and limiting fire spread and intensity, and at the same time increase the native shrub habitat over time.



Kern Mountains (BLM)

Environmentally Sensitive Land Acquisitions

The SNPLMA authorizes the acquisition of environmentally sensitive land and interests in land within Nevada with priority given to acquiring lands in Clark County. Environmentally sensitive lands are those which promote the preservation of natural, scientific, aesthetic, historical, cultural, watershed, wildlife, and other resource values; enhance recreational opportunities and public access; provide for better management of public land through consolidation of Federal ownership, or otherwise serve the public interest.



Incline Lake (USFS)

The Environmentally Sensitive Land Acquisitions category will maintain flexibility in order to take advantage of opportunities to acquire land that has “high value” and is “at risk of development” even if the cost of such an acquisition exceeds the estimated Round funding amount.

The Executive Committee defines “high value lands” as those that contribute to the preservation of natural, scientific, aesthetic, historical, cultural, watershed, wildlife, and other values contributing to public enjoyment and biological diversity; and enhance recreational opportunities and public access.

Hazardous Fuels Reduction and Wildfire Prevention

The Hazardous Fuels Reduction and Wildfire Prevention category is for development and implementation of comprehensive, cost effective, multi-jurisdictional hazardous fuels reduction and wildfire prevention plans for the Lake Tahoe Basin, the Carson Range in Douglas and Washoe Counties and Carson City, and the Spring Mountains in southern Nevada. Hazardous Fuels Reduction and Wildfire Prevention projects may include project level planning, fuels reduction treatment activities, biomass utilization, and biofuels energy development and production activities.

The Hazardous Fuels Reduction and Wildfire Prevention category projects will accomplish the objectives of the multi-jurisdictional fuels plans and landscape restoration over time within two priority project types: Fuel Management Plans and Landscape Restoration.

- Fuel Management Plans projects will address the threat of fire within and/or adjacent to communities.
- Landscapes Restoration projects shall protect and enhance the vegetation, soils, habitat and watershed processes that provided ecosystem services for human and ecological communities.

Multi-Species Habitat Conservation Plan

The Clark County Multi-Species Habitat Conservation Plan (MSHCP) targets 78 sensitive, threatened, and endangered species, including the threatened Mojave Desert tortoise. The plan ensures that the loss of habitat, as authorized by an incidental take permit issued by the United States Fish and Wildlife Service under the authority of Section 10 of the Endangered Species Act, is adequately minimized. Clark County, other permittees, and the Federal agencies on whose land these actions take place work together to implement projects under this category of work.

The MSHCP category will emphasize habitat enhancement and outreach projects. Projects in this category will implement the goals and objectives of the MSHCP. In particular, projects will maximize prospects for long-term protection for habitats located in Clark County as well as the many native species of plants and animals identified in the MSHCP. In addition, Clark County may purchase lands or rights in land for purposes consistent with the implementation of the MSHCP.



Tunnel Creek Prescribed Fire (State of Nevada)



Virgin River (BLM)

Parks, Trails, and Natural Areas

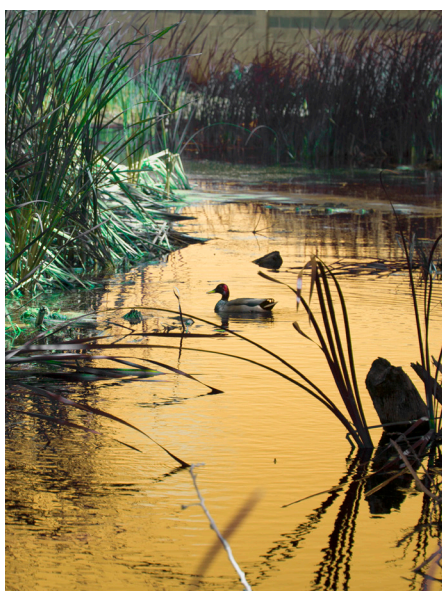
This project category benefits local communities through the development of Parks, Trails, and Natural Areas (PTNA) in Clark, Lincoln, and White Pine Counties. Carson City is also eligible for PTNA funding, subject to certain limitations. Funds are provided for acquisition of lands, easements, or rights-of-way necessary to

develop PTNA projects as well as for construction or renovation of such projects by local and regional governmental entities.

The PTNA category will focus on increasing the local community's understanding and appreciation of the natural outdoor environment. Priority projects for the category should center on new projects or enhancements to existing parks, trails, or natural areas to meet the demands for access to recreation opportunities, while at the same

time creating a conservation stewardship legacy that links people to recreational opportunities, and unites important places across the landscape.

The nominating entity must demonstrate the commitment to be responsible for the future operations and maintenance costs, ensuring the fiscal sustainability of the project into the future.



Natural Spring at Kiel Ranch (BLM)



Mountains Edge Park in Las Vegas (BLM)



Boomtown 1905 at Las Vegas Springs Preserve (BLM)

