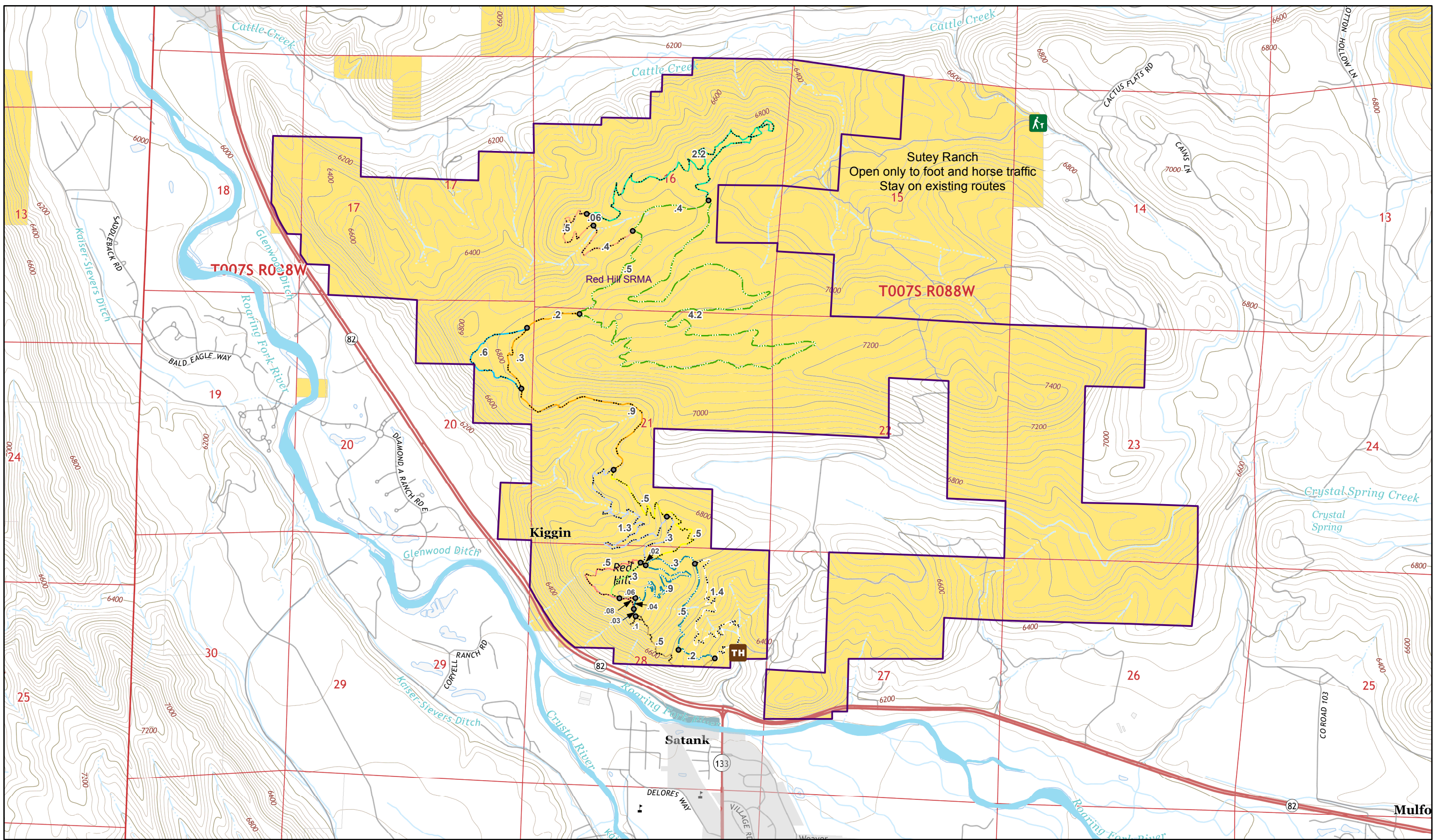




Red Hill SRMA- Colorado River Valley Field Office



BLM Routes Open to Bikes, Hikers, Equestrians

- |                       |                         |                           |                          |                           |
|-----------------------|-------------------------|---------------------------|--------------------------|---------------------------|
| SRMA Boundary         | Big Top- 2.2 Miles      | Faerie- 1.6 Miles         | Roller Coaster- 0.3 Mile | Bureau of Land Management |
| Mileage Intersections | Blue Ribbon- 1.9 Miles  | Mushroom Rock- 0.6 Mile   | Sage Loop- 0.9 Mile      | Private                   |
| Information Kiosk     | Bogus- 1 Mile           | Northside Loop- 5.2 Miles | Skeeters Ridge- 0.6 Mile | State Wildlife Area       |
| Trail Head            | Elk Traverse- 1.5 Miles | Outer Loop- 0.6 Mile      | Three Gulch- 1.4 Miles   |                           |

No warranty is made by the Bureau of Land Management as to the accuracy, reliability, or completeness of these data for individual use or aggregate use with other data, or for the purposes not intended by the BLM. Spatial information may not meet National Map Accuracy Standards. This information may be updated without notification.