

146°W

145°W

144°W

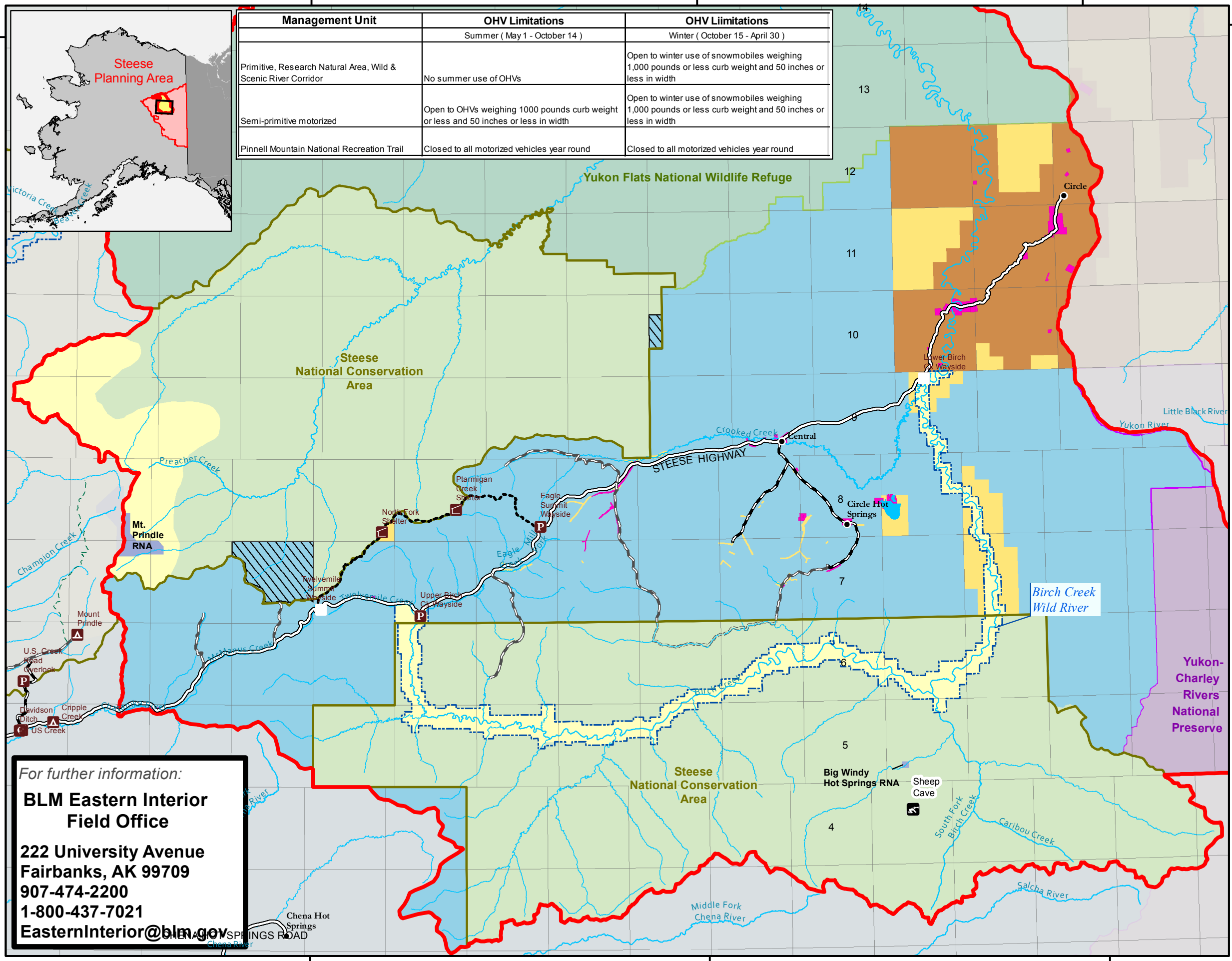
66°N

66°N

146°W

145°W

144°W



Management Unit	OHV Limitations	OHV Limitations
	Summer (May 1 - October 14)	Winter (October 15 - April 30)
Primitive, Research Natural Area, Wild & Scenic River Corridor	No summer use of OHVs	Open to winter use of snowmobiles weighing 1,000 pounds or less curb weight and 50 inches or less in width
Semi-primitive motorized	Open to OHVs weighing 1000 pounds curb weight or less and 50 inches or less in width	Open to winter use of snowmobiles weighing 1,000 pounds or less curb weight and 50 inches or less in width
Pinnell Mountain National Recreation Trail	Closed to all motorized vehicles year round	Closed to all motorized vehicles year round



Map 10 Interim Travel Management - Steese Planning Area

Management Units
See table in map for explanation of OHV designation

- Research Natural Areas (RNA)
- Primitive
- Semi-Primitive Motorized

Management Unit Symbols

- Steese Planning Area Boundary
- National Conservation Area
- Wild & Scenic River Corridors
- State Inholding

Land Status (April 2016)

- Other BLM - Managed Land
- National Park Service
- US Fish & Wildlife Service
- State of Alaska
- Native Patent
- Native Allotment / Private

Recreation Symbols

- Campground
- Recreation Cabin
- Trail Shelter
- Trailhead
- Wayside
- Trails
- Secondary Roads

For further information:
**BLM Eastern Interior
 Field Office**
 222 University Avenue
 Fairbanks, AK 99709
 907-474-2200
 1-800-437-7021
 EasternInterior@blm.gov

Steese Planning Area - Record of Decision
 Bureau of Land Management - Alaska

0 2 4 6 12 18
 Miles

Projection: Albers Conic Equal Area referencing NAD83
 Source: USDOI-BLM, 1986 and 2016
 The information displayed on this map should be used for graphic display only. For official land status information, refer to Cadastral Survey Plats, Master Title Plats, and case files.