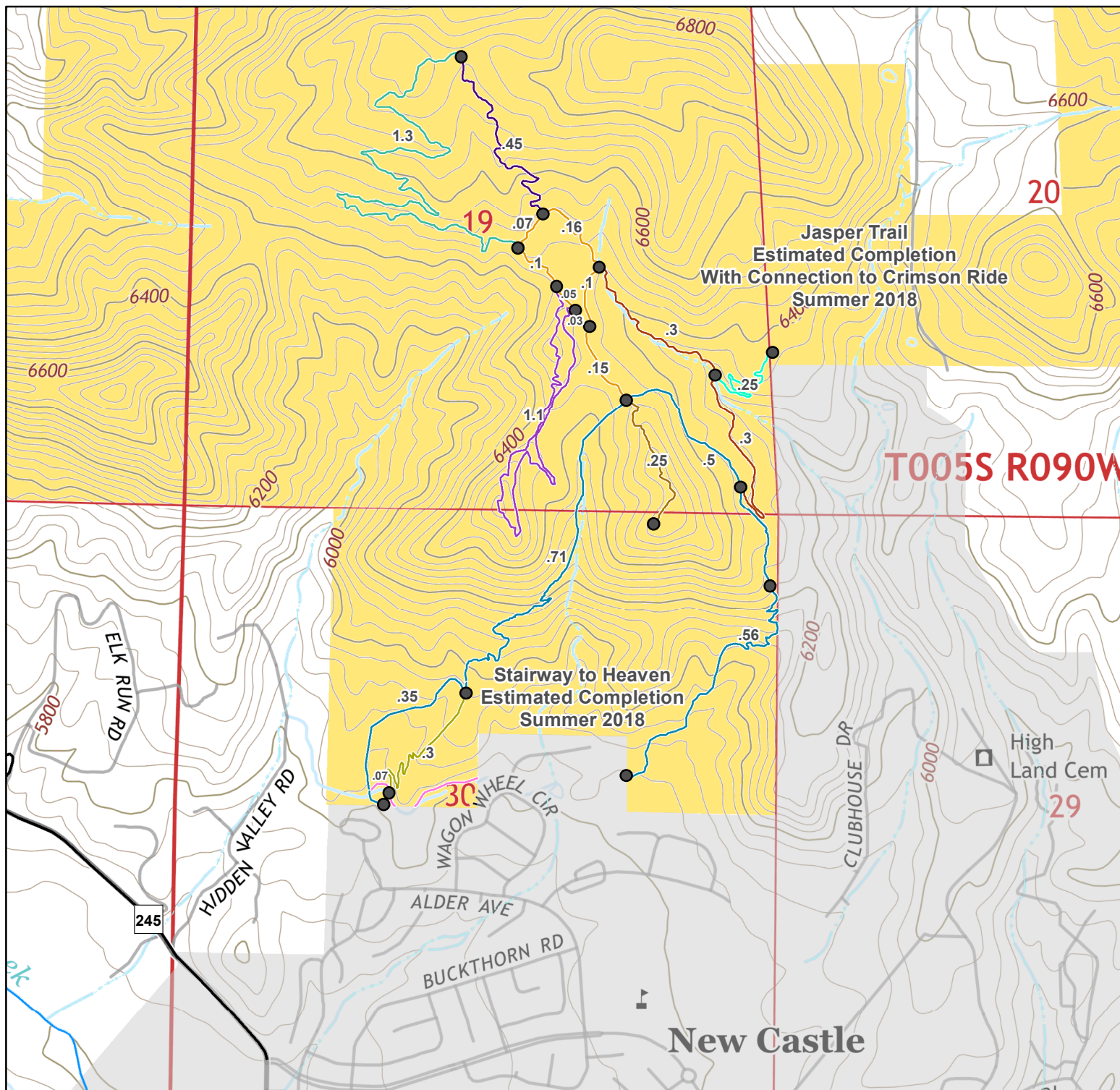




U.S. DEPARTMENT OF THE INTERIOR
BUREAU OF LAND MANAGEMENT

COLORADO

New Castle Trails- Colorado River Valley Field Office



Please Stay on
Designated Routes

No warranty is made by the Bureau of Land Management as to the accuracy, reliability, or completeness of these data for individual use or aggregate use with other data, or for the purposes not intended by the BLM. Spatial information may not meet National Map Accuracy Standards. This information may be updated without notification.

BLM Routes Open to Bikes, Hikers, Equestrians

- | | |
|----------------------------|-----------------------------|
| Colorow Ditch | Half Time- .7 mile |
| Ole' Roller- .6 mile | Lower Jasper- .25 mile |
| Colorow Overlook- .25 mile | Stairway to Heaven- .3 mile |
| Colorow Trail- 2.5 miles | Sweet Mother- 1.3 miles |
| Crimson Ride- .45 mile | Zeni's Trail- 1.1 miles |

● Mileage Intersections

Major Roads

— County