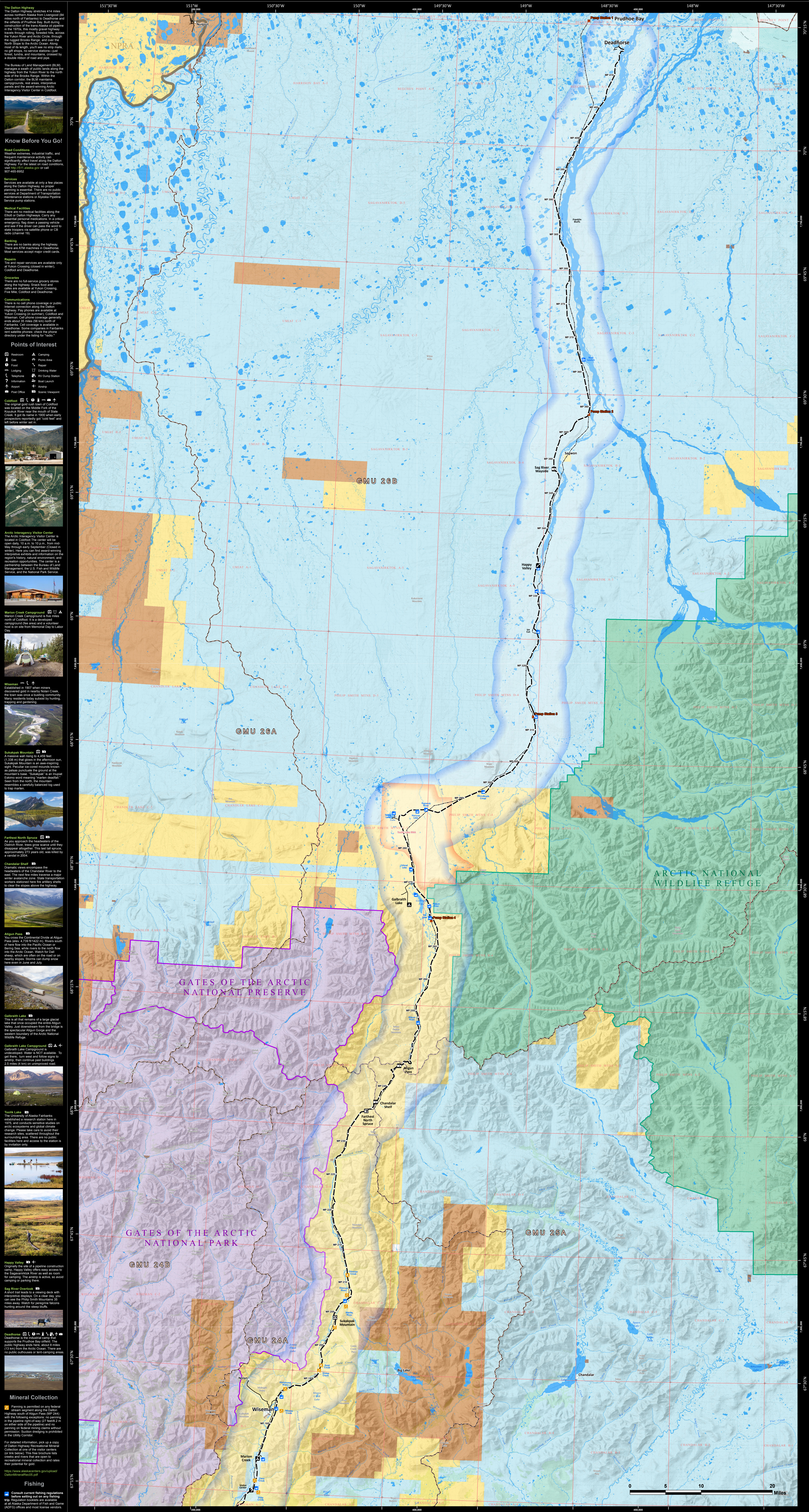


Dalton Highway Corridor: Coldfoot to Deadhorse



The Dalton Highway measures 414 miles across northern Alaska from Livengood (84 miles north of Prudhoe Bay) to Deadhorse and the offices of Prudhoe Bay. Built during the early 1970s, this mostly gravel highway traverses the tundra, crosses the Yukon River and Arctic Circle, through the North Slope to the Arctic Ocean. Along most of its length, it is a two-lane road with no gift shops, no service stations—just fuel, food, and accommodations, provided by a double ribbon of road and pipe.

The Bureau of Land Management (BLM) maintains a wealth of public lands along the Highway from the Yukon River to the north side of the Brooks Range. Within the Dalton corridor, the BLM maintains 200,000 acres of public lands, including 15,000 acres of riparian habitat, riparian lands, and the award-winning Arctic Intermittent Visitor Center.

Know Before You Go!

Road Conditions
Weather extremes, industrial traffic, and heavy use of the Dalton Highway can significantly affect travel along the Dalton Highway. For the latest road conditions, visit <http://www.alaska.gov> or call 907-485-9992.

Services
Services are available at only a few places along the Dalton Highway and advance planning is essential. There are no public restrooms or Department of Transportation maintenance stations or Alaska Pipeline Service pump stations.

Medical Facilities
There are no medical facilities along the Dalton Highway. If you have any emergency or essential personal medications, in a critical emergency, they must be carried in your car and seal if the driver can pass the word to other motorists. It is essential to carry a cell phone or a radio (channel 11).

Banking
There are no banks along the highway. There are ATM machines in Deadhorse. Most services accept major credit cards.

Repairs
The and repair services are available only in Fairbanks, Chitina, and Deadhorse.

Gasoline
There are full service gasoline stations along the highway. Snack food and other services are available at Chitina, Five Mile, Coldfoot and Deadhorse.

Communications
There is no cellular phone coverage or public internet connection along the Dalton Highway. There are several radio frequencies for Yukon Crossing (in summer), Coldfoot and Fairbanks (in winter) and emergency primary radio calls. Some GMUs (54 km) north of Fairbanks and some GMUs in Fairbanks and Deadhorse. Some companies in Fairbanks provide satellite phone services. A directory under the listing for "radio."

Points of Interest

- Restroom
- Gas
- Food
- Laundry
- Auto
- Post Office
- Camping
- Phone Area
- Repair
- Drinking Water
- RV Camp Station
- Food Service
- ATM
- Scenic Viewpoint

Coldfoot (MP 200) is a small town located on the Middle Fork of the Yukon River. It was founded in 1900 when early prospectors discovered gold. The town has a rich history and is a popular destination for tourists. It is located on a site from Memorial Day to Labor Day.

Wiseman (MP 240) is a small town located on the Yukon River. It was founded in 1900 when prospectors discovered gold. The town has a rich history and is a popular destination for tourists.

Sukakpak Mountain (MP 250) is a massive mountain rising to 4,459 feet (1,359 m) that peaks in the afternoon sun. Sukakpak Mountain is an awe-inspiring sight. The mountain is covered in snow and is a popular destination for hikers. The mountain is a National Natural Landmark. The mountain is a National Natural Landmark. The mountain is a National Natural Landmark.

Farthest North Source (MP 260) is a small town located on the Yukon River. It was founded in 1900 when prospectors discovered gold. The town has a rich history and is a popular destination for tourists.

Chandalar Shell (MP 320) is a small town located on the Yukon River. It was founded in 1900 when prospectors discovered gold. The town has a rich history and is a popular destination for tourists.

Align Pass (MP 340) is a small town located on the Yukon River. It was founded in 1900 when prospectors discovered gold. The town has a rich history and is a popular destination for tourists.

Galbraith Lake (MP 350) is a small town located on the Yukon River. It was founded in 1900 when prospectors discovered gold. The town has a rich history and is a popular destination for tourists.

Galbraith Lake Campground (MP 350) is a small town located on the Yukon River. It was founded in 1900 when prospectors discovered gold. The town has a rich history and is a popular destination for tourists.

North Slope (MP 360) is a small town located on the Yukon River. It was founded in 1900 when prospectors discovered gold. The town has a rich history and is a popular destination for tourists.

Happy Valley (MP 360) is a small town located on the Yukon River. It was founded in 1900 when prospectors discovered gold. The town has a rich history and is a popular destination for tourists.

Sag River Overlook (MP 360) is a small town located on the Yukon River. It was founded in 1900 when prospectors discovered gold. The town has a rich history and is a popular destination for tourists.

Deadhorse (MP 360) is a small town located on the Yukon River. It was founded in 1900 when prospectors discovered gold. The town has a rich history and is a popular destination for tourists.

Location	Fairbanks	Livengood	Yukon River	Arctic Circle	Coldfoot	Align Pass	Galbraith Lake	Deadhorse
Fairbanks	84 (134)	140 (224)	199 (318)	259 (414)	328 (525)	359 (574)	498 (797)	
Livengood		56 (90)	115 (184)	175 (280)	244 (390)	275 (440)	414 (662)	
Yukon River			56 (90)	115 (184)	175 (280)	244 (390)	359 (574)	498 (797)
Arctic Circle				60 (96)	120 (190)	180 (300)	219 (350)	358 (573)
Coldfoot					60 (96)	120 (190)	180 (300)	219 (350)
Align Pass						60 (96)	120 (190)	180 (300)
Galbraith Lake							31 (50)	139 (223)
Deadhorse								31 (50)

Legend

- Milepost (MP)
- Highway
- No Off-Road Vehicle Use / Hunting with Firearms Prohibited
- Trans-Alaska Pipeline (Permitting)
- Research Natural Area (No Camping)
- Game Management Unit (7/12/2016)
- USGS 1:63,300 Index

Administered Lands

- Bureau of Land Management
- National Park Service
- Private
- State of Alaska
- Native Lands

Contact Information

Bureau of Land Management
 Fairbanks District Office
 222 University Avenue
 Fairbanks, Alaska 99775
 Phone: 907-474-2200
 Fax: 907-474-2200
<http://www.blm.gov>

Alaska Department of Fish & Game
 Fairbanks Office
 9150 Old Road
 Fairbanks, Alaska 99701-1551
 Phone: 907-459-7000
<http://www.adfg.alaska.gov>

Disclaimer: No warranty is made by the Bureau of Land Management as to the accuracy, reliability, or completeness of these data for individual or aggregate use with other data. Original data were compiled from various sources. The information may not meet National Map Accuracy Standards. This product was developed through digital means and may be updated without notification. The information displayed on this map should be used for graphic display only. For Official and status information, refer to Cadastral Survey Plans, Master Title Plans, and cadastral case files.