

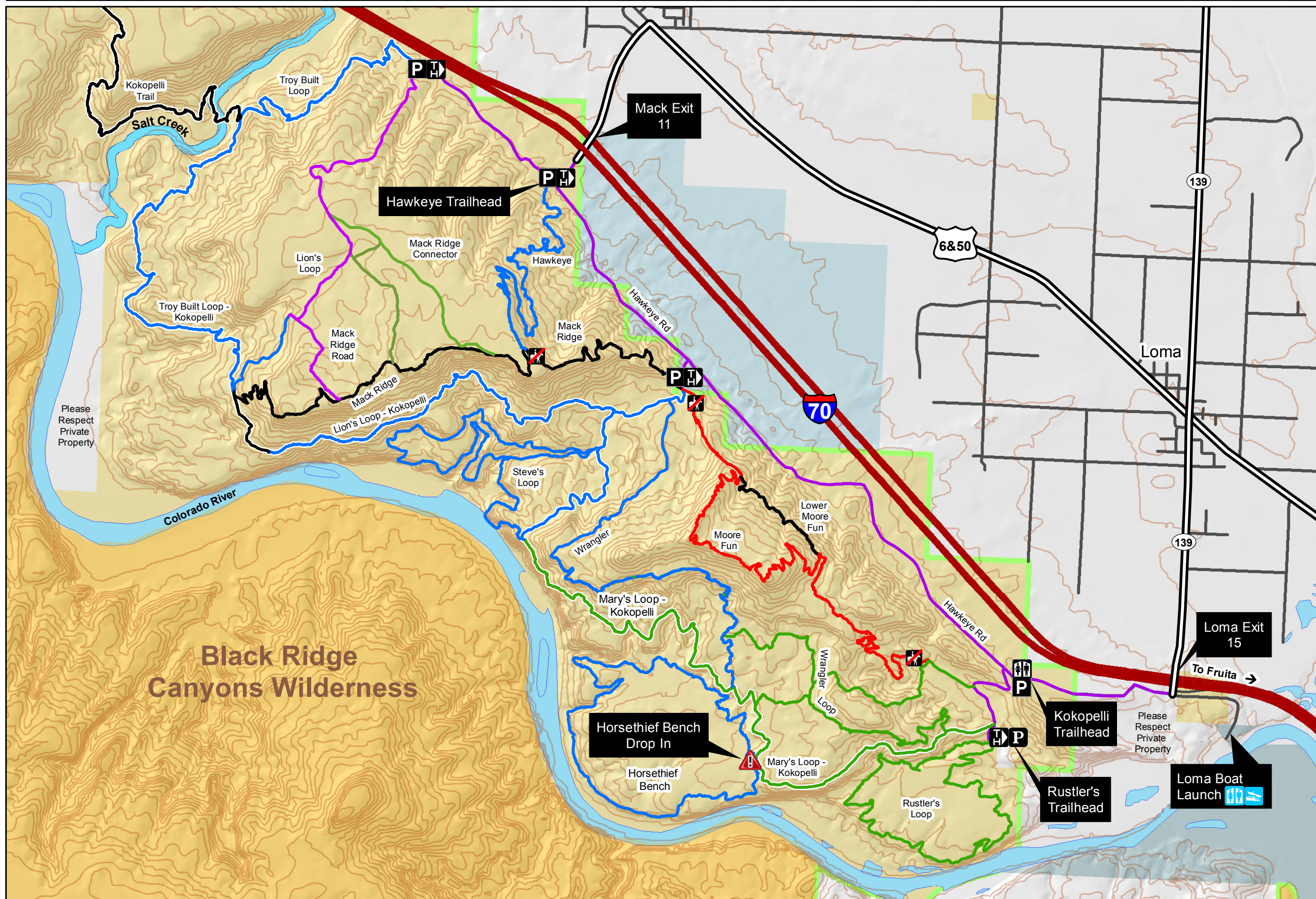


NATIONAL
CONSERVATION
LANDS



McInnis Canyons National Conservation Area - Kokopelli Loops Mountain Bike Trails

COLORADO

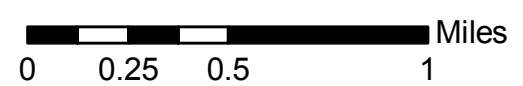


- Interstate
- U.S. Highway
- County & Main Roads
- Open to Full Sized Vehicles
- Easy
- Intermediate
- Difficult
- Very Difficult
- Kokopelli Trail (White Highlight)
- MCNCA Boundary
- BLM Wilderness Areas
- Bureau of Land Management
- Private
- State
- Trail Head
- Parking Area
- Toilet
- Boat Launch
- Trail Closed to Horses
- Warning! Very Difficult Terrain
- Contours (40 ft)

Difficulty Established by:
Colorado Plateau Mountain
Bike Trail Association

Day Use Only
No Camping

Keep single track single.
Ride only on designated routes.



No warranty is made by the Bureau of Land Management as to the accuracy, reliability, or completeness of these data for individual use or aggregate use with other data, or for the purposes not intended by the BLM. Spatial information may not meet National Map Accuracy Standards. This information may be updated without notification.