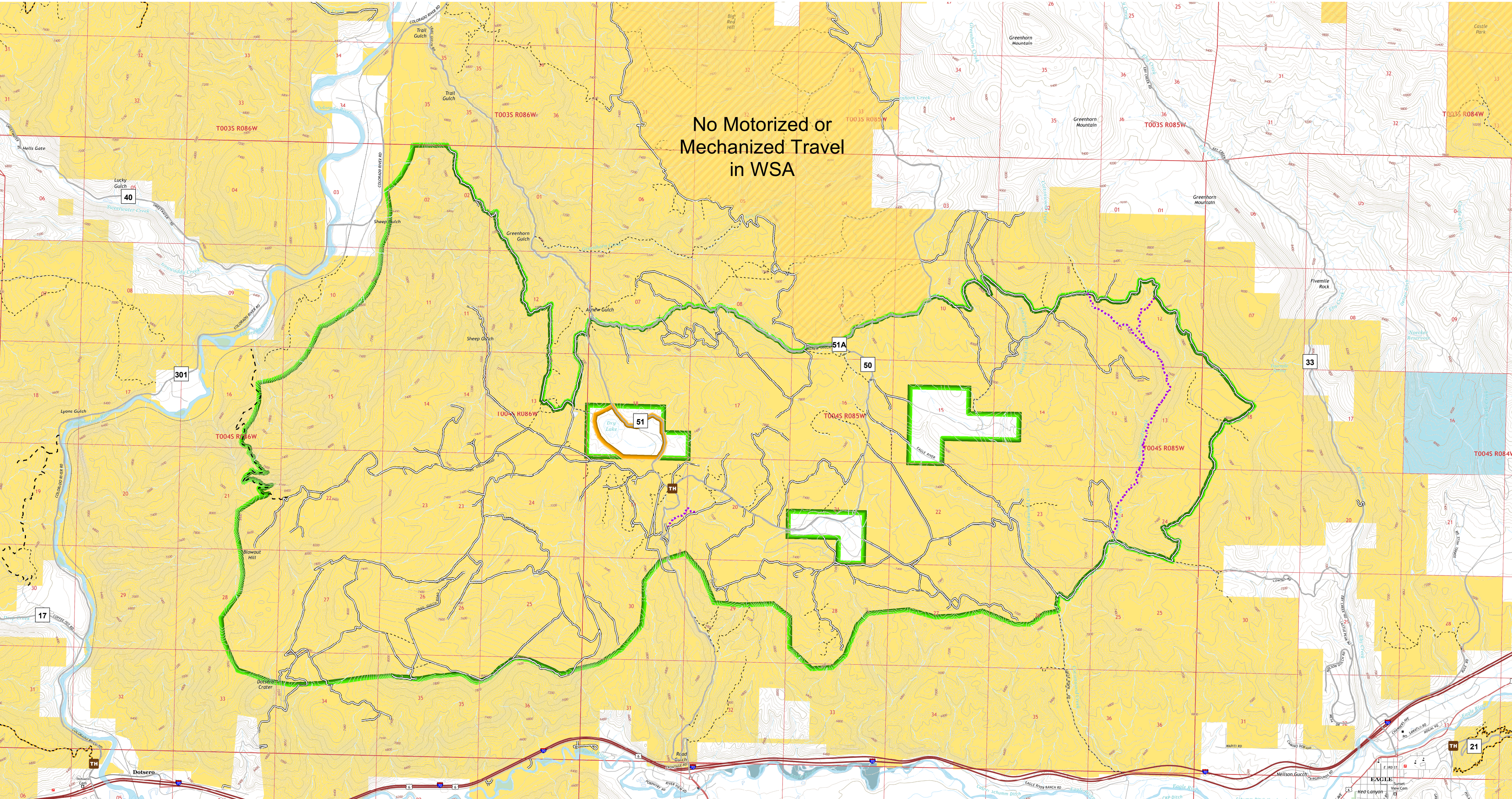




Gypsum Hills ERMA- Colorado River Valley Field Office



- |                                |                                                                     |                           |
|--------------------------------|---------------------------------------------------------------------|---------------------------|
| Gypsum Hills Information Kiosk | --- Open to ATV (<50 in), Motorcycles, Bikes, Hikers, & Equestrians | Bureau of Land Management |
| Gypsum Hills ERMA Area         | Open Only to Technical Rock Crawling & Trials Bikes                 | Private                   |
| Dry Lake Moto-Track            | Open to Bikes, Hikers, Equestrians                                  | State                     |
|                                | Open to Hikers, Equestrian, and Livestock                           | State Wildlife Area       |
|                                | Open to Motorcycles, Bikes, Hikers, & Equestrians                   | US Forest Service         |
|                                | Open to all Modes of Transportation                                 | Wilderness Study Areas    |

No warranty is made by the Bureau of Land Management as to the accuracy, reliability, or completeness of these data for individual use or aggregate use with other data, or for the purposes not intended by the BLM. Spatial information may not meet National Map Accuracy Standards. This information may be updated without notification.