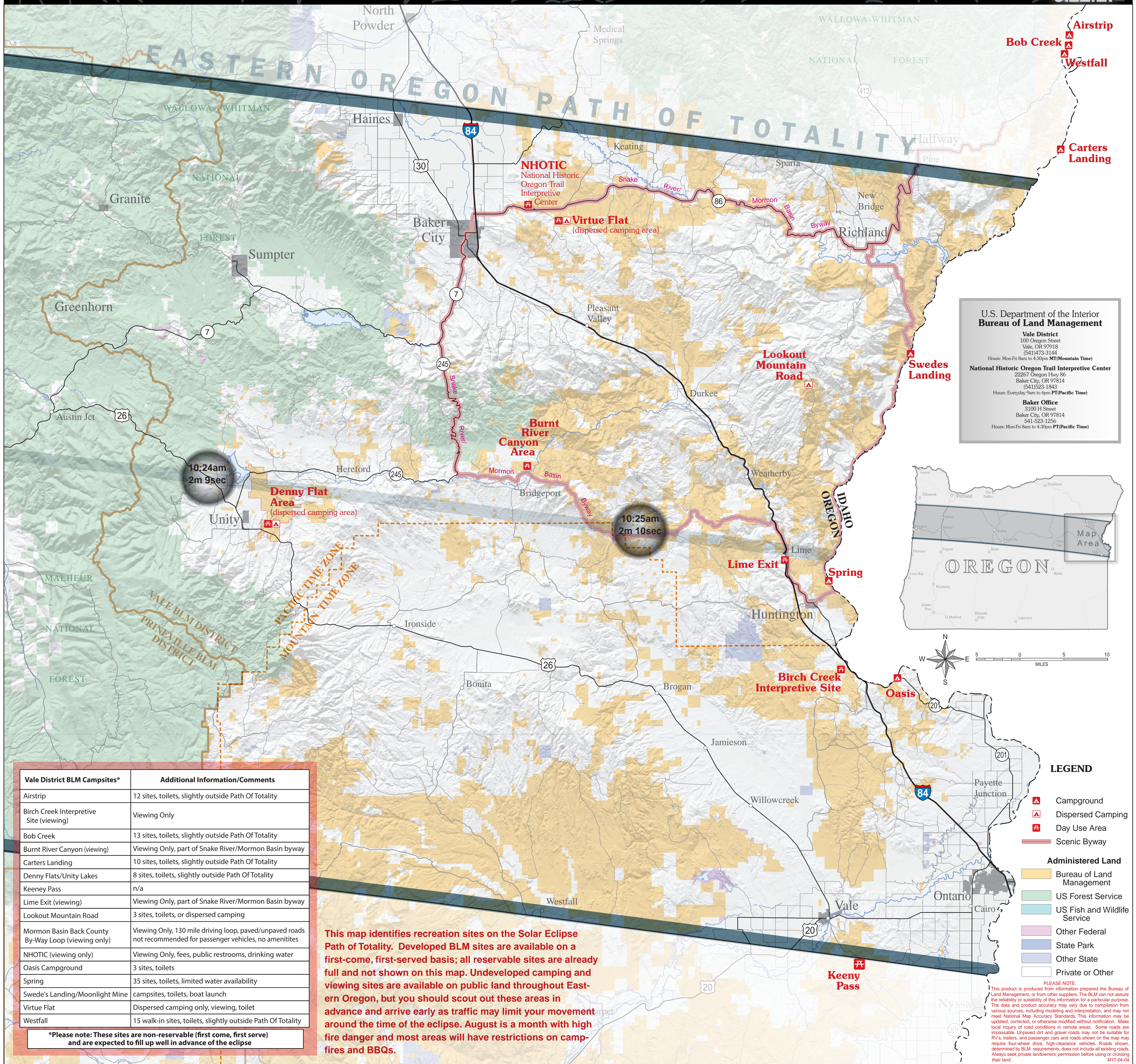


Solar Eclipse Path Of Totality

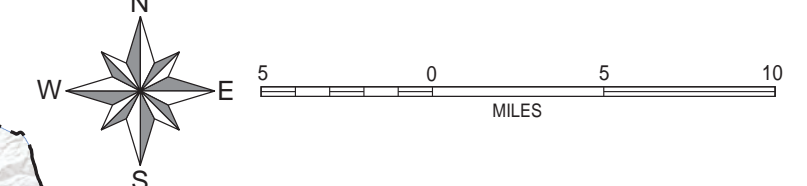
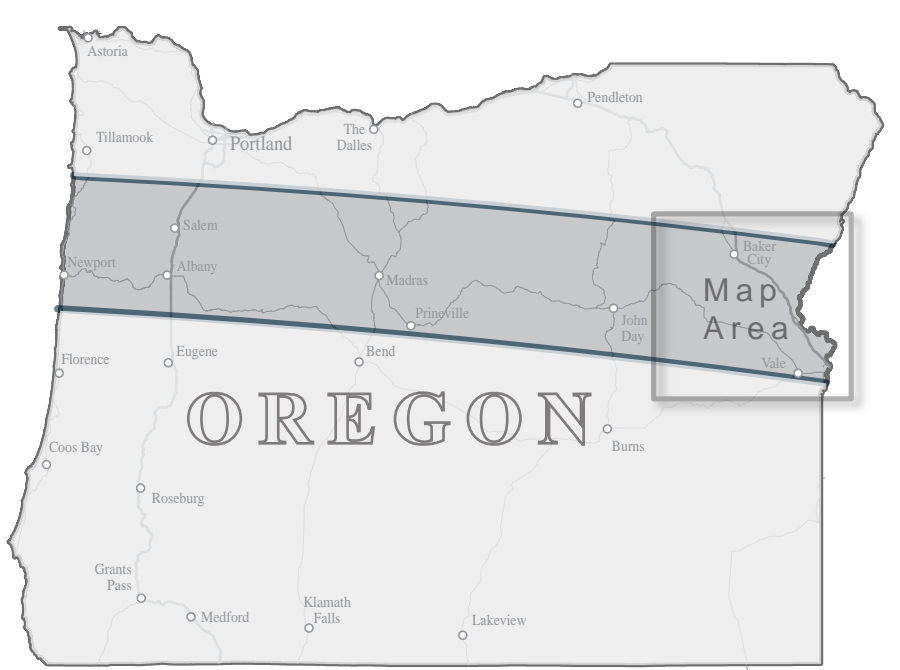


U.S. Department of the Interior
Bureau of Land Management

Vale District
100 Oregon Street
Vale, OR 97918
(541)473-3144
Hours: Mon-Fri 8am to 4:30pm MT(Mountain Time)

National Historic Oregon Trail Interpretive Center
22267 Oregon Hwy 86
Baker City, OR 97814
(541)523-1843
Hours: Everyday 9am to 6pm PT(Pacific Time)

Baker Office
3100 H Street
Baker City, OR 97814
541-523-1256
Hours: Mon-Fri 8am to 4:30pm PT(Pacific Time)



| Vale District BLM Campsites* | Additional Information/Comments |
|-----------------------------------------------------|---------------------------------------------------------------------------------------------------------------|
| Airstrip | 12 sites, toilets, slightly outside Path Of Totality |
| Birch Creek Interpretive Site (viewing) | Viewing Only |
| Bob Creek | 13 sites, toilets, slightly outside Path Of Totality |
| Burnt River Canyon (viewing) | Viewing Only, part of Snake River/Mormon Basin byway |
| Carters Landing | 10 sites, toilets, slightly outside Path Of Totality |
| Denny Flats/Unity Lakes | 8 sites, toilets, slightly outside Path Of Totality |
| Keeney Pass | n/a |
| Lime Exit (viewing) | Viewing Only, part of Snake River/Mormon Basin byway |
| Lookout Mountain Road | 3 sites, toilets, or dispersed camping |
| Mormon Basin Back County By-Way Loop (viewing only) | Viewing Only, 130 mile driving loop, paved/unpaved roads not recommended for passenger vehicles, no amenities |
| NHOTIC (viewing only) | Viewing Only, fees, public restrooms, drinking water |
| Oasis Campground | 3 sites, toilets |
| Spring | 35 sites, toilets, limited water availability |
| Swede's Landing/Moonlight Mine | campsites, toilets, boat launch |
| Virtue Flat | Dispersed camping only, viewing, toilet |
| Westfall | 15 walk-in sites, toilets, slightly outside Path Of Totality |

This map identifies recreation sites on the Solar Eclipse Path of Totality. Developed BLM sites are available on a first-come, first-served basis; all reservable sites are already full and not shown on this map. Undeveloped camping and viewing sites are available on public land throughout Eastern Oregon, but you should scout out these areas in advance and arrive early as traffic may limit your movement around the time of the eclipse. August is a month with high fire danger and most areas will have restrictions on campfires and BBQs.

LEGEND

- Campground
- Dispersed Camping
- Day Use Area
- Scenic Byway

Administered Land

- Bureau of Land Management
- US Forest Service
- US Fish and Wildlife Service
- Other Federal
- State Park
- Other State
- Private or Other

PLEASE NOTE:
This product is produced from information prepared by the Bureau of Land Management, or from other suppliers. The BLM can not assure the reliability or suitability of this information for a particular purpose. The data and product accuracy may vary due to compilation from various sources, including modeling and interpretation, and may not meet National Map Accuracy Standards. This information may be updated, corrected, or otherwise modified without notification. Make local inquiry of road conditions in remote areas. Some roads are impassable. Unpaved dirt and gravel roads may not be suitable for RV's, trailers, and passenger cars and roads shown on the map may require four-wheel drive, high-clearance vehicles. Roads shown, determined by BLM requirements, does not include all existing roads. Always seek private landowners' permission before using or crossing their land.
MT17-04-04

*Please note: These sites are non-reservable (first come, first serve) and are expected to fill up well in advance of the eclipse