

# Sand Mountain Open OHV Area

This map is geo-referenced  
BLM St. George Field Office | 345 E. Riverside, Drive, St. George, UT | 435-688-3200



**Roads**

- State Highway
- Improved Surface
- Unimproved Surface, 4WD

**Trails**

- OHV
- Hiking
- Intermittent Stream, Unreliable Water Source

**Land Manager**

- Bureau of Land Management (BLM)
- State
- State Park
- Private

**Visitor Information**

- Visitor Information
- Point of Interest
- Parking
- Trailhead

**Sand Mountain Open OHV Area**

- State Line

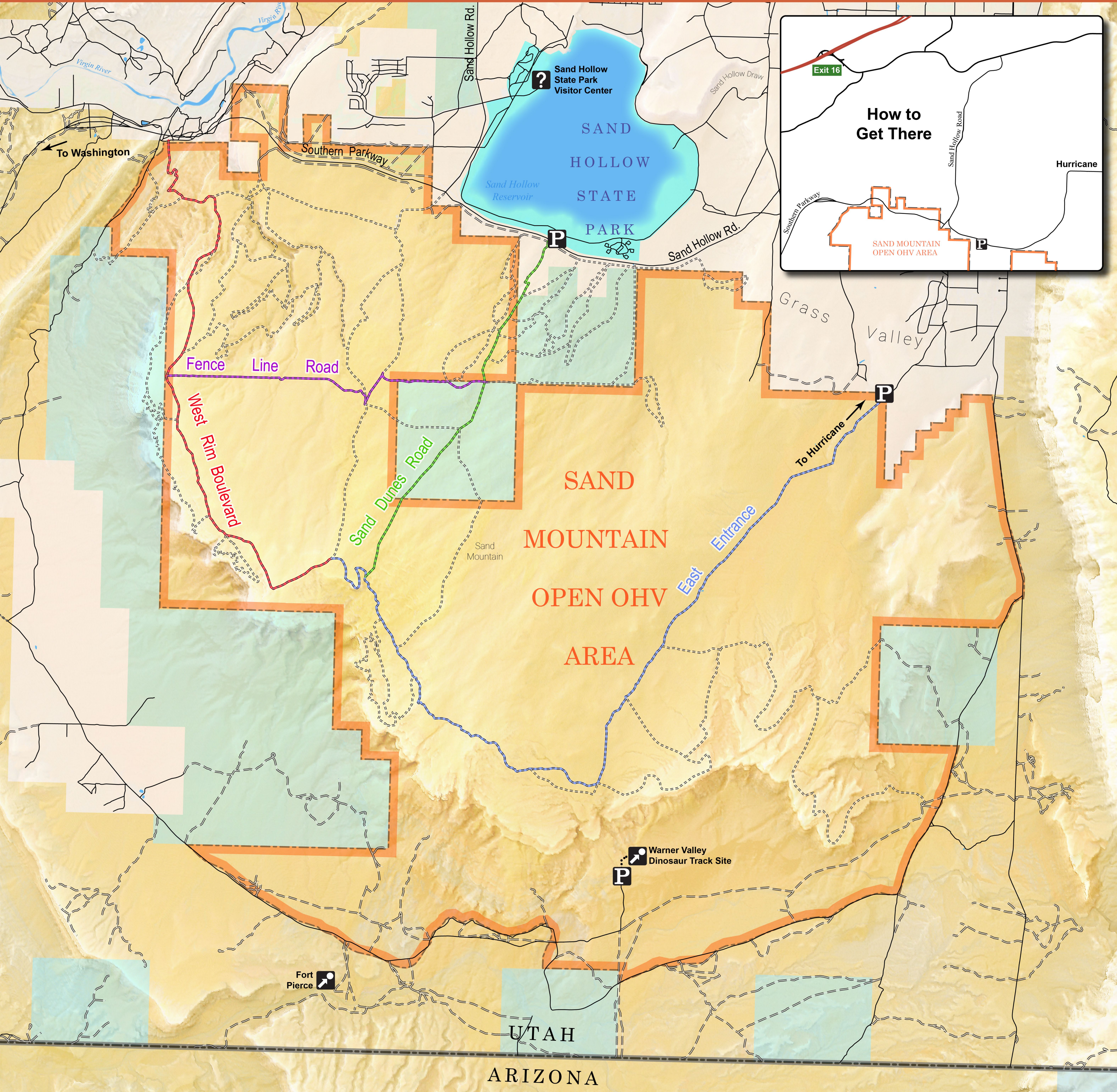
**RIDE ON DESIGNATED ROUTES**

NORTH

0 0.5 1 2 Kilometers

0 0.5 1 2 Miles

\* DISCLAIMER: This information is provided as a courtesy only, no warranty, expressed or implied, is made as to the current validity of this information. Trail ratings are only intended to serve as general overviews of difficulty levels, and may vary from the trail ratings in other areas you are familiar with. Weather events can quickly alter trail conditions and increase difficulty levels, be prepared for changing conditions at all times. Unsecured, abandoned mines may be present near the trails for your safety, never enter abandoned mines. The BLM is not liable for any incidents arising from the use of the information presented here—each user is solely responsible for their own safety while enjoying their public lands. Produced May 2016.



**How to Get There**

Exit 16

Southern Parkway

Sand Hollow Rd.

Sand Hollow Reservoir

SAND MOUNTAIN OPEN OHV AREA

Hurricane

Grass Valley

To Hurricane

UTAH  
ARIZONA