

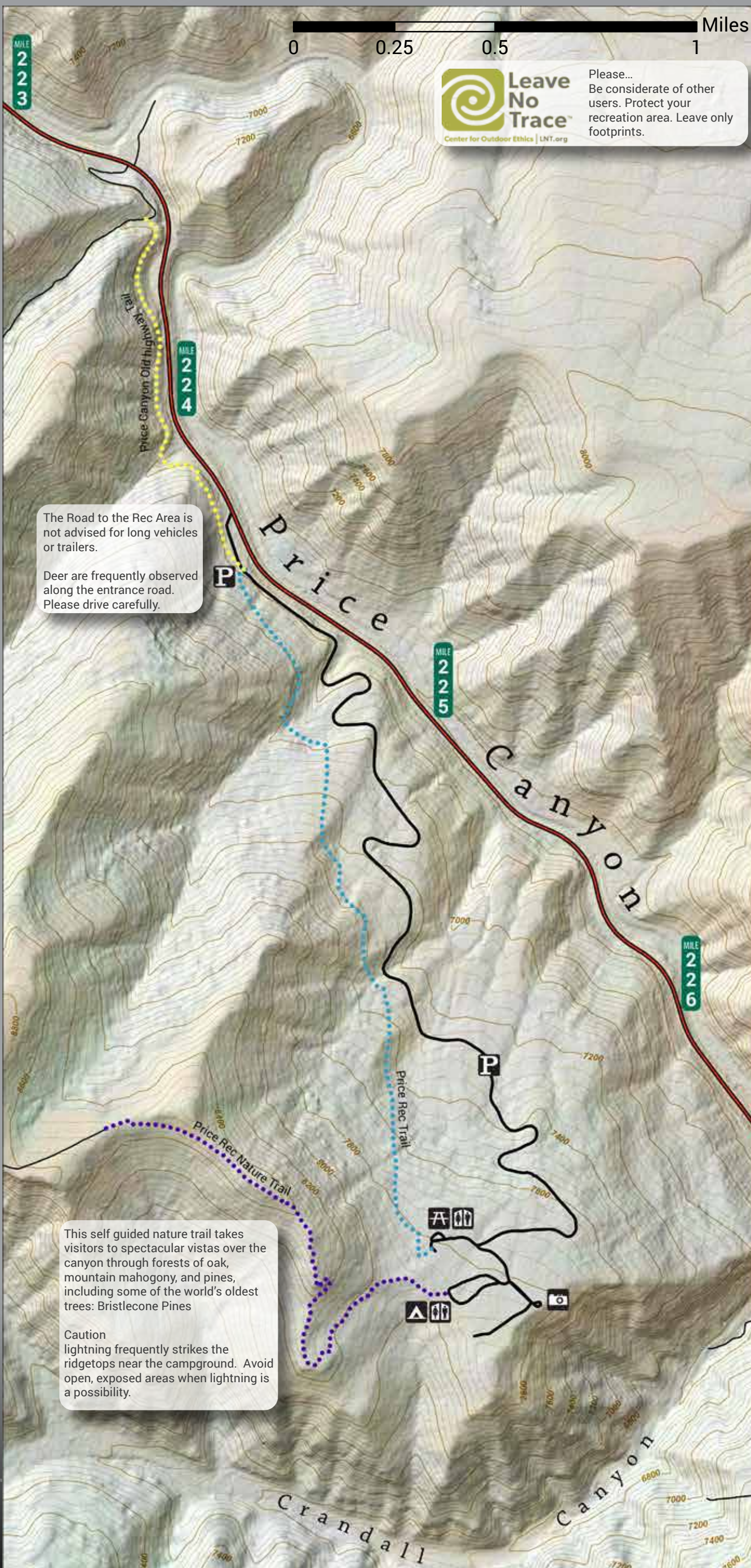
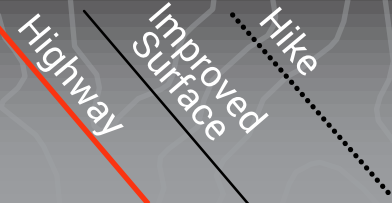


Price Canyon Recreation Area

BLM Price Field Office
125 S 600 W, Price, UT 84501
435-636-3600

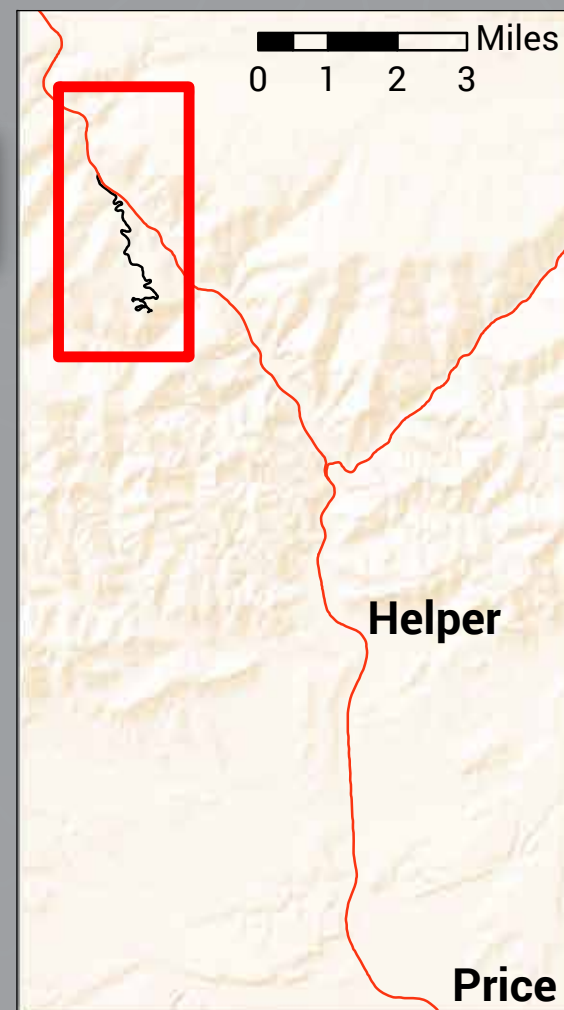


The Price Canyon Recreation Area, administered by the Bureau of Land Management (BLM), offers visitors a chance to enjoy cooler temperatures and the shade of large ponderosa pine trees during the summer. The recreation area is located on a ridge high above Price Canyon. The entrance road and scenic overlook road are easily accessible by automobile while hiking trails provide excellent views of our rugged canyon country.



The Road to the Rec Area is not advised for long vehicles or trailers.
Deer are frequently observed along the entrance road. Please drive carefully.

This self guided nature trail takes visitors to spectacular vistas over the canyon through forests of oak, mountain mahogany, and pines, including some of the world's oldest trees: Bristlecone Pines
Caution lightning frequently strikes the ridgetops near the campground. Avoid open, exposed areas when lightning is a possibility.



Camping
12 Large, well-spaced campsites area available as first come first serve. Facilities at the campground include picnic tables, fire rings, vault toilets and parking spaces.

Group Picnic Area
Three group picnic areas with large picnic tables, toilets fire rings and paring are available by reservation. Call 435-636-3600

Fees
The price Canyon Recreation Area is a U.S. Fee Area. A nominal fee of \$8 is charged for overnight camping and reservation of the group picnic areas. Golden Age and Golden Access discounts are honored. Please telephone the BLM in advance at 435-636-3600 for group site reservation information as the group areas are popular for family outings.

Fire Restrictions
Fire restrictions have been placed throughout the state of Utah. Up to date information can be found at www.utahfireinfo.gov. Fire restriction will be posted and continue until further notice.

* DISCLAIMER: This information is provided as a courtesy only, no warranty, expressed or implied, is made as to the current validity of this information. Trail ratings are only intended to serve as general overviews of difficulty levels, and may vary from the trail ratings in other areas you are familiar with. Weather events can quickly alter trail conditions and increase difficulty levels, be prepared for changing conditions at all times. Unsecured, abandoned mines may be present near the trails-for your safety, never enter abandoned mines. The BLM is not liable for any incidents arising from the use of the information presented here-each user is solely responsible for their own safety while enjoying their public lands. Produced January 2017