



NATIONAL CONSERVATION LANDS

Burr Trail Scenic Backway and Wolverine Loop Road

Grand Staircase-Escalante National Monument

Escalante Interagency Visitor Center | 755 W. Main St., Escalante, UT | 435-826-5499
Grand Staircase-Escalante National Monument Visitor Center
10 Center St., Cannonville, UT | 435-826-5640
BLM Kanab Visitor Center | 745 US-89 Kanab, UT | 435-644-1300 ext. 1301



This map is geo-referenced

Roads

- State Highway
- Paved/Gravel
- Improved
- Unimproved, AWD Recommended
- Burr Trail/Wolverine Loop Roads
- Scenic Byway/Backway

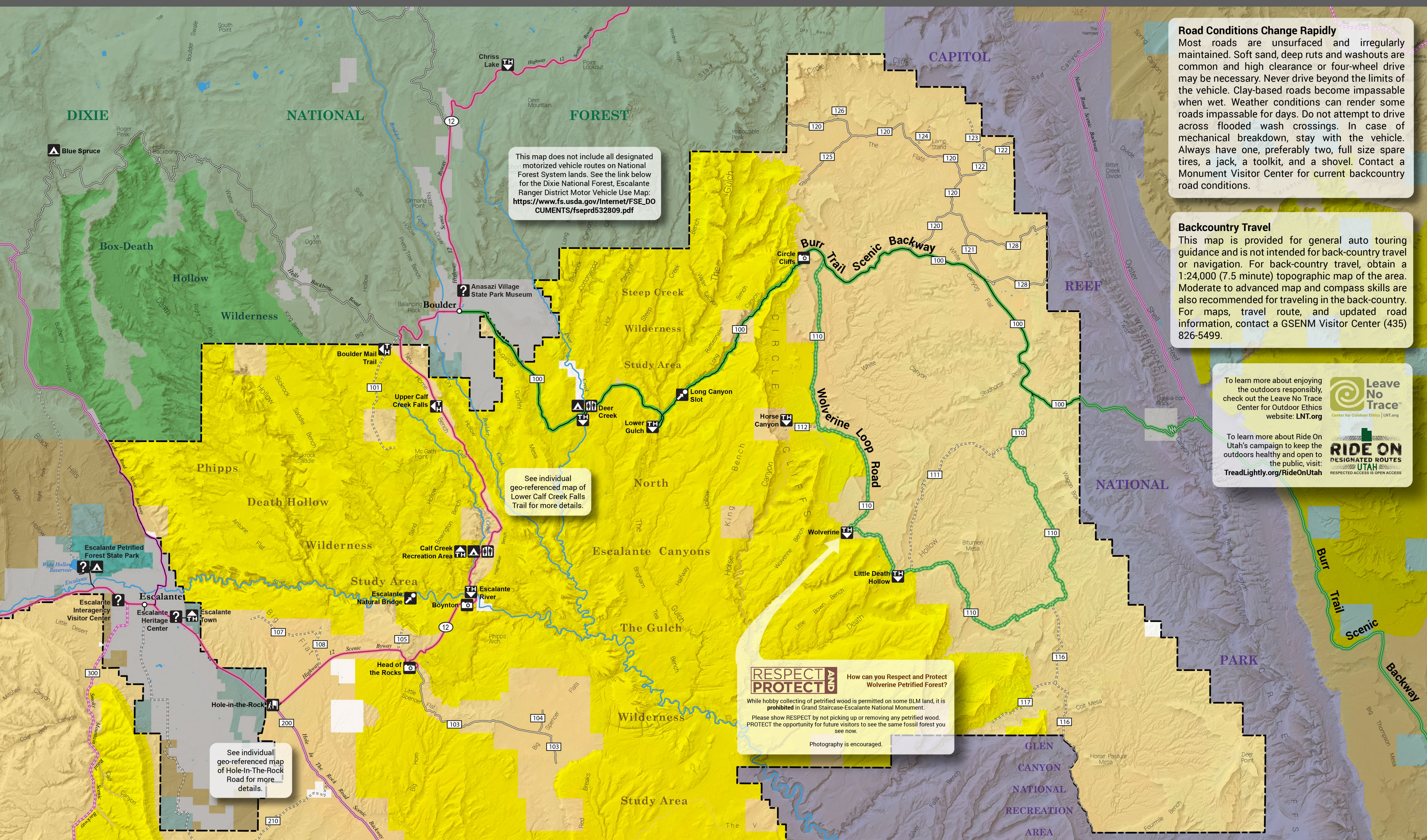
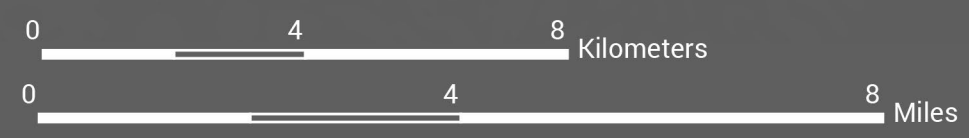
Land Manager

- Bureau of Land Management (BLM)
- BLM Wilderness/Instant Study Area
- Forest Service
- Forest Service Wilderness Area
- National Park Service
- State
- State park
- Private

Visitor Information

- Visitor Center
- Campground
- Trailhead
- Restroom
- Scenic Viewpoint
- Wayside Exhibit
- Point of Interest
- GSENM Boundary

* DISCLAIMER: This information is provided as a courtesy only, no warranty, expressed or implied, is made as to the current validity of this information. Trail ratings are only intended to serve as general overviews of difficulty levels, and may vary from the trail ratings in other areas you are familiar with. Weather events can quickly alter trail conditions and increase difficulty levels, be prepared for changing conditions at all times. Unsecured, abandoned mines may be present near the trails for your safety, never enter abandoned mines. The BLM is not liable for any incidents arising from the use of the information presented here each user is solely responsible for their own safety while enjoying their public lands. Produced April 2016.



This map does not include all designated motorized vehicle routes on National Forest System lands. See the link below for the Dixie National Forest, Escalante Ranger District Motor Vehicle Use Map: https://www.fs.usda.gov/Internet/FSE_DOCUMENTS/fseprd532809.pdf

See individual geo-referenced map of Lower Calf Creek Falls Trail for more details.

See individual geo-referenced map of Hole-In-The-Rock Road for more details.

RESPECT AND PROTECT

How can you Respect and Protect Wolverine Petrified Forest?

While hobby collecting of petrified wood is permitted on some BLM land, it is prohibited in Grand Staircase-Escalante National Monument.

Please show RESPECT by not picking up or removing any petrified wood. PROTECT the opportunity for future visitors to see the same fossil forest you see now.

Photography is encouraged.

Road Conditions Change Rapidly

Most roads are unsurfaced and irregularly maintained. Soft sand, deep ruts and washouts are common and high clearance or four-wheel drive may be necessary. Never drive beyond the limits of the vehicle. Clay-based roads become impassable when wet. Weather conditions can render some roads impassable for days. Do not attempt to drive across flooded wash crossings. In case of mechanical breakdown, stay with the vehicle. Always have one, preferably two, full size spare tires, a jack, a toolkit, and a shovel. Contact a Monument Visitor Center for current backcountry road conditions.

Backcountry Travel

This map is provided for general auto touring guidance and is not intended for back-country travel or navigation. For back-country travel, obtain a 1:24,000 (7.5 minute) topographic map of the area. Moderate to advanced map and compass skills are also recommended for traveling in the back-country. For maps, travel route, and updated road information, contact a GSENM Visitor Center (435) 826-5499.

To learn more about enjoying the outdoors responsibly, check out the Leave No Trace Center for Outdoor Ethics website: LNT.org

To learn more about Ride On Utah's campaign to keep the outdoors healthy and open to the public, visit: TreadLightly.org/RideOnUtah