

Pine Creek Loop Trail

NORTH

Scenic Drive

Pine Creek Canyon



Dale's

Fire Ecology

Pine Creek Loop Trail

0.80 mi

Pine Creek Canyon



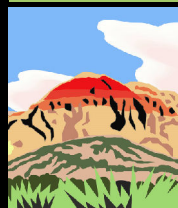
Knoll

Rainbow Mountain Wilderness



NATIONAL
CONSERVATION
LANDS

Legend



Parking

--- Existing trails



Restrooms

— Scenic Drive



Trail access point

— Wilderness boundary



Leashed pets

Red Rock
Canyon
National
Conservation
Area

Pine Creek Loop

Distance: 0.80 mi / 1.28 km one way
Elevation: 3042' (low) - 4146' (high)

Trail uses:



Hiking

Date: 1/15/2020

No Warranty is made by the Bureau of Land Management as to the accuracy, reliability, or completeness of these data for individual use or aggregate use with other data.