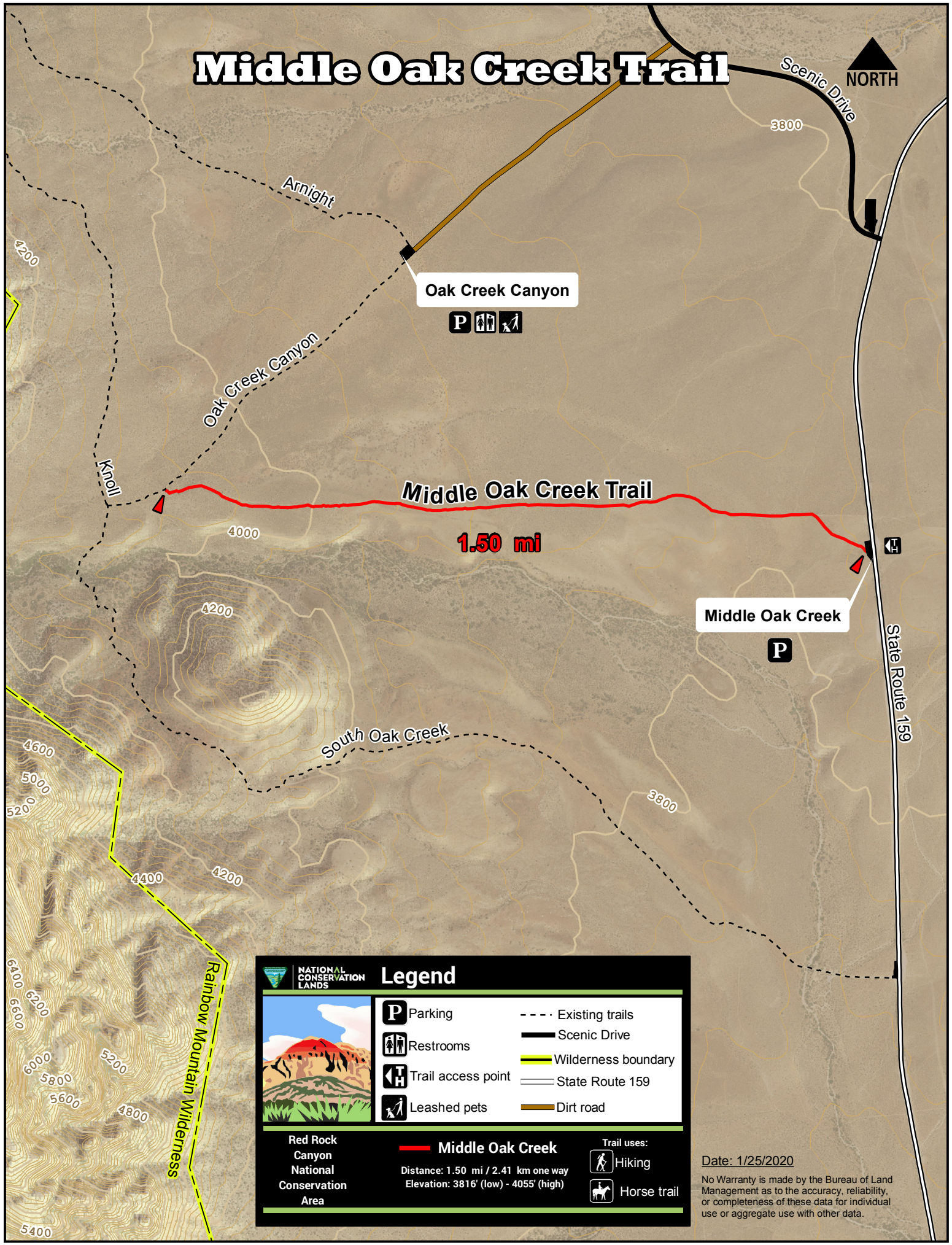


Middle Oak Creek Trail



NATIONAL CONSERVATION LANDS

Legend

	Parking		Existing trails
	Restrooms		Scenic Drive
	Trail access point		Wilderness boundary
	Leashed pets		State Route 159
			Dirt road

Red Rock Canyon National Conservation Area

Middle Oak Creek
 Distance: 1.50 mi / 2.41 km one way
 Elevation: 3816' (low) - 4055' (high)

Trail uses:
 Hiking
 Horse trail

Date: 1/25/2020

No Warranty is made by the Bureau of Land Management as to the accuracy, reliability, or completeness of these data for individual use or aggregate use with other data.