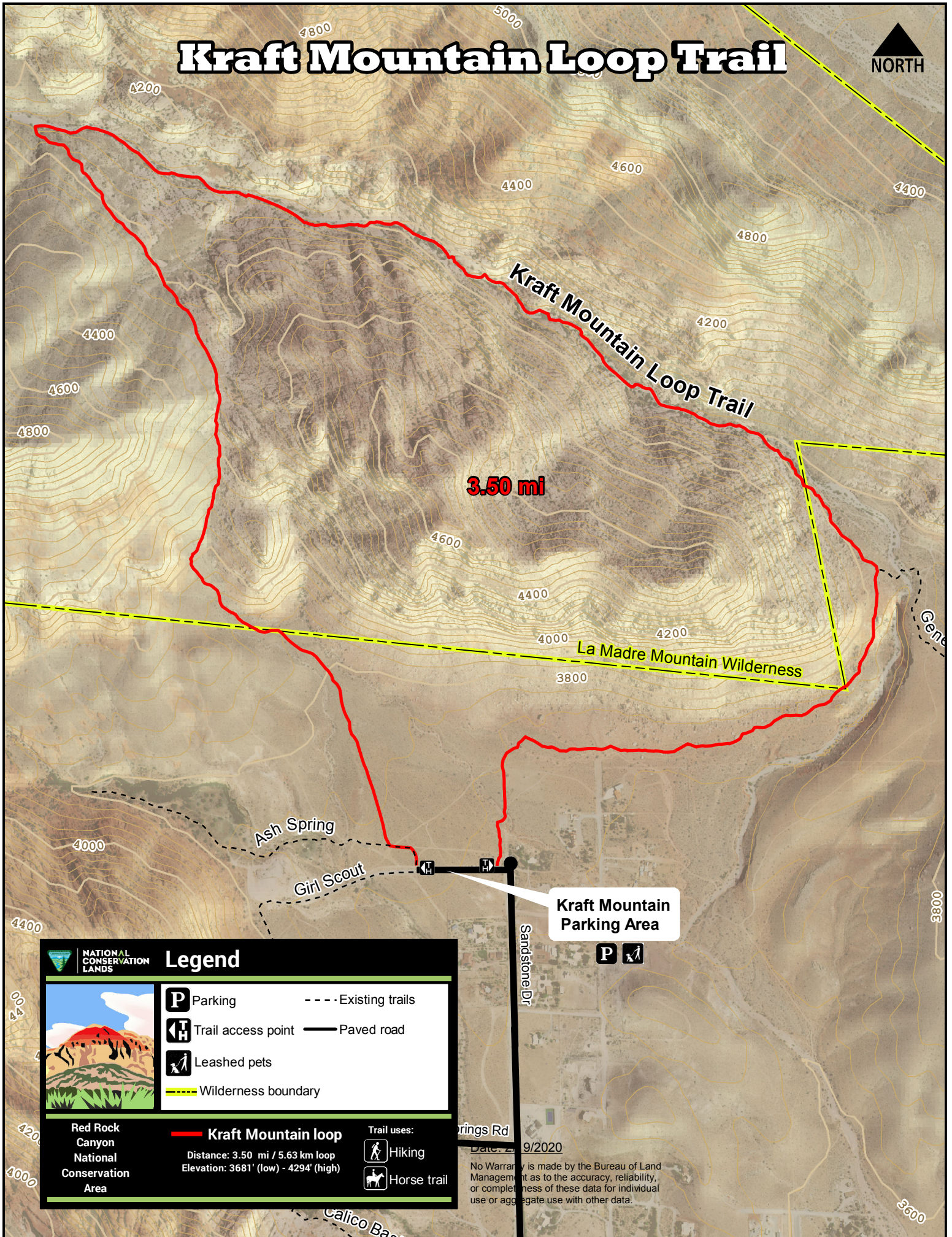
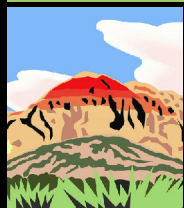


Kraft Mountain Loop Trail



Legend



Parking

--- Existing trails



Trail access point

— Paved road



Leashed pets



Wilderness boundary

Red Rock
Canyon
National
Conservation
Area

Kraft Mountain loop

Distance: 3.50 mi / 5.63 km loop
Elevation: 3681' (low) - 4294' (high)

Trail uses:



Hiking



Horse trail

Kraft Mountain
Parking Area



Sandstone Dr

Calico Basin Rd

Date: 2/9/2020

No Warranty is made by the Bureau of Land Management as to the accuracy, reliability, or completeness of these data for individual use or aggregate use with other data.