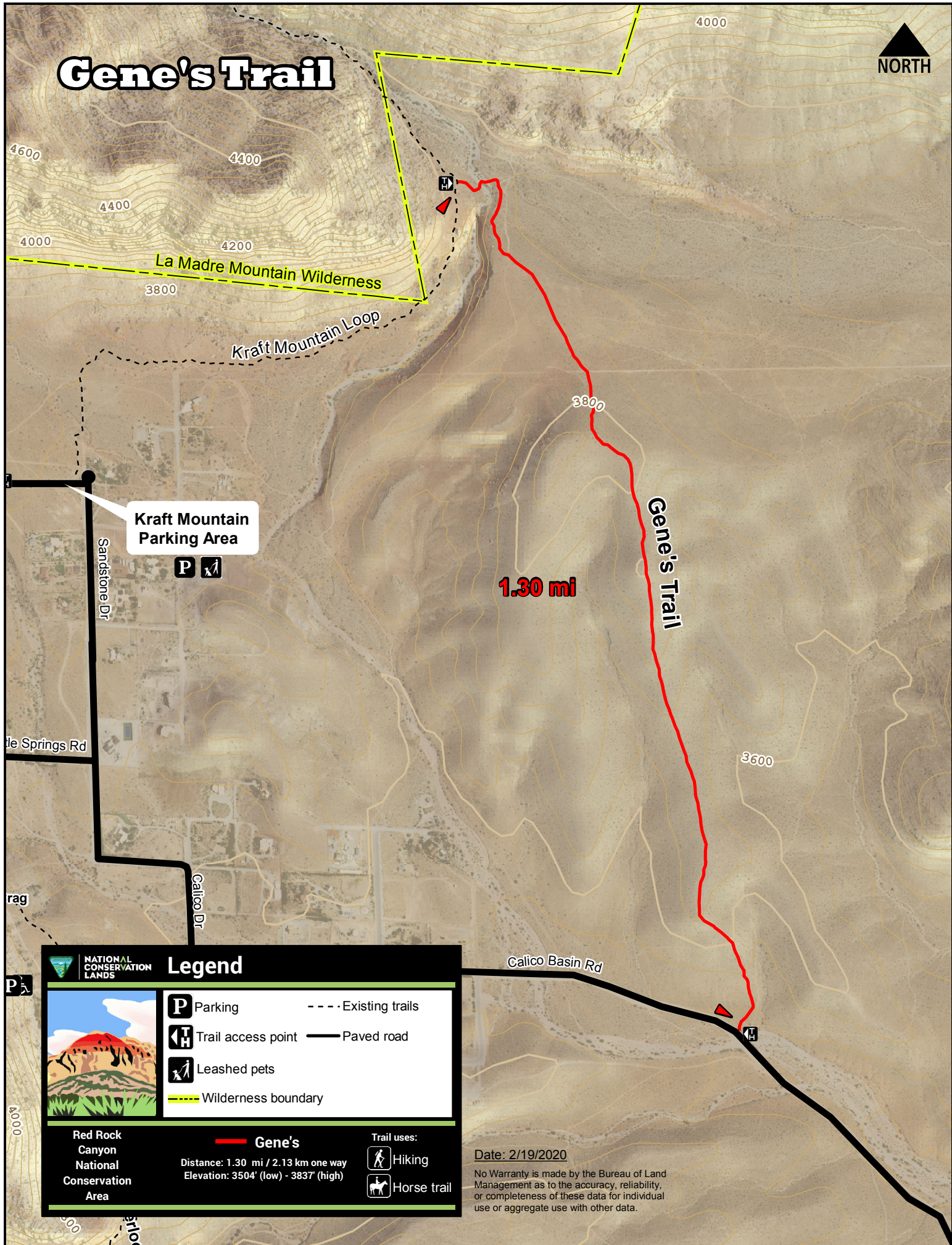


Gene's Trail



Kraft Mountain
Parking Area



1.30 mi

Gene's Trail

Sandstone Dr

le Springs Rd

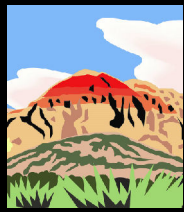
rag

Calico Dr

Calico Basin Rd



Legend



- Parking
- Trail access point
- Leashed pets
- Existing trails
- Paved road
- Wilderness boundary

Red Rock
Canyon
National
Conservation
Area

Gene's
Distance: 1.30 mi / 2.13 km one way
Elevation: 3504' (low) - 3837' (high)

- Trail uses:
- Hiking
 - Horse trail

Date: 2/19/2020

No Warranty is made by the Bureau of Land Management as to the accuracy, reliability, or completeness of these data for individual use or aggregate use with other data.