

First Creek Canyon Trail



South Oak Creek

South Oak Creek



State Route 159

First Creek Canyon



First Creek Canyon Trail

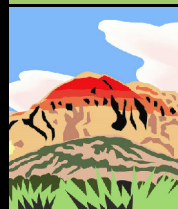
2 mi

Rainbow Mountain Wilderness

Spring Mountain Ranch
State Park



Legend



P Parking

— Paved road



Trail access point

— Wilderness boundary



Leashed pets

— State Route 159

--- Existing trails

Red Rock
Canyon
National
Conservation
Area

First Creek Canyon

Distance: 2 mi / 3.21 km one way
Elevation: 3642' (low) - 4126' (high)

Trail uses:



Hiking



Horse trail

Date: 1/25/2020

No Warranty is made by the Bureau of Land Management as to the accuracy, reliability, or completeness of these data for individual use or aggregate use with other data.