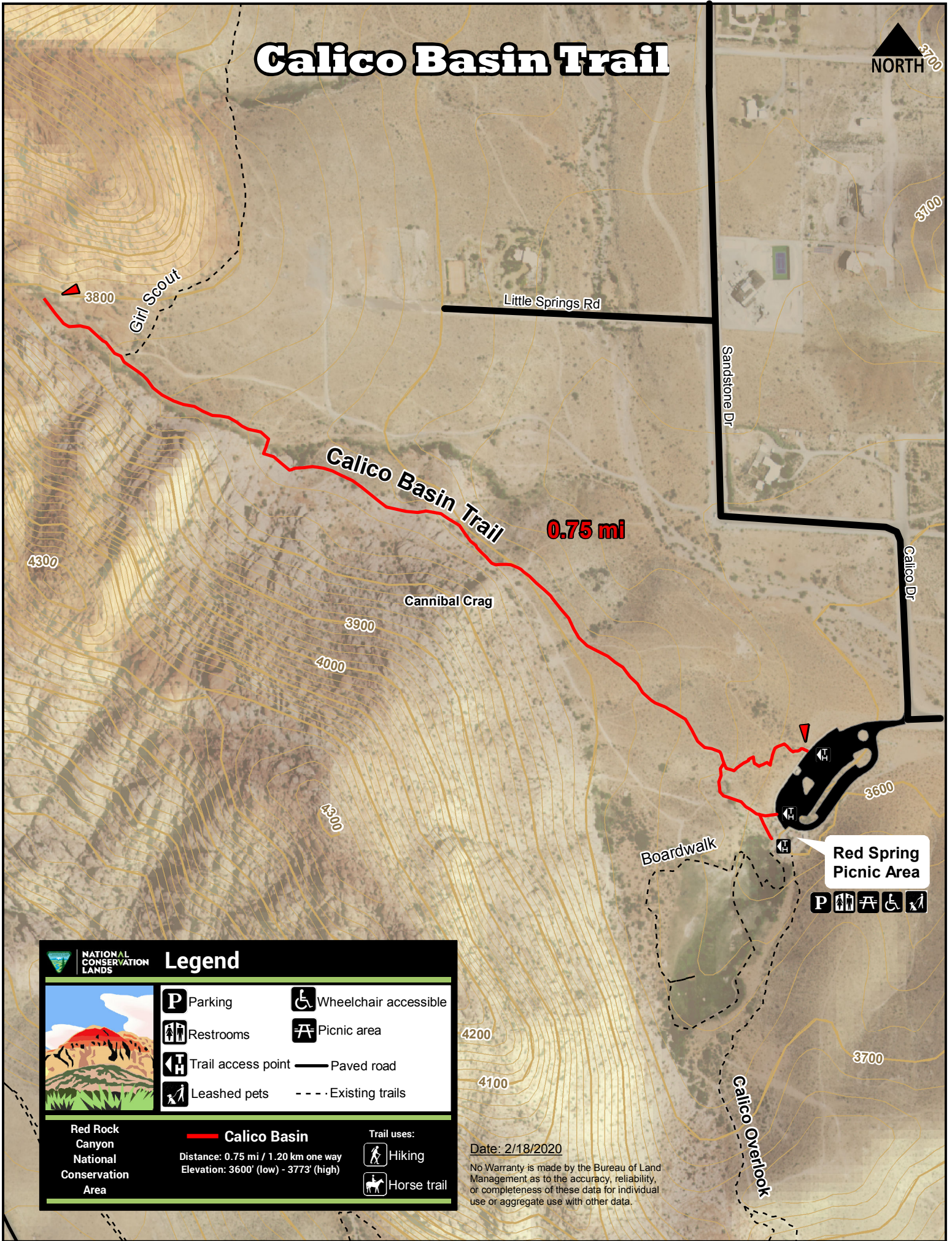


Calico Basin Trail



**NATIONAL
CONSERVATION
LANDS**

Legend

Parking	Wheelchair accessible
Restrooms	Picnic area
Trail access point	Paved road
Leashed pets	Existing trails

**Red Rock
Canyon
National
Conservation
Area**

Calico Basin

Distance: 0.75 mi / 1.20 km one way
Elevation: 3600' (low) - 3773' (high)

Trail uses:

Hiking
Horse trail

Date: 2/18/2020

No Warranty is made by the Bureau of Land Management as to the accuracy, reliability, or completeness of these data for individual use or aggregate use with other data.