

2022 Southeast Utah Fire Restriction Area Map



Grand & San Juan Counties UT

Fire restriction area includes:

State lands and unincorporated private lands in Grand and San Juan Counties.

BLM Moab and Monticello Field Office areas in Grand and San Juan Counties.

NPS including Canyonlands and Arches National Parks, and Natural Bridges and Hovenweep National Monuments, in Emery, Garfield, Grand, San Juan & Wayne Counties.

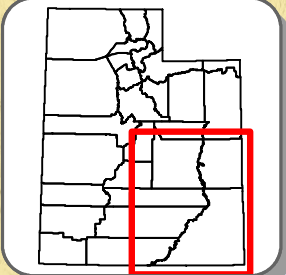
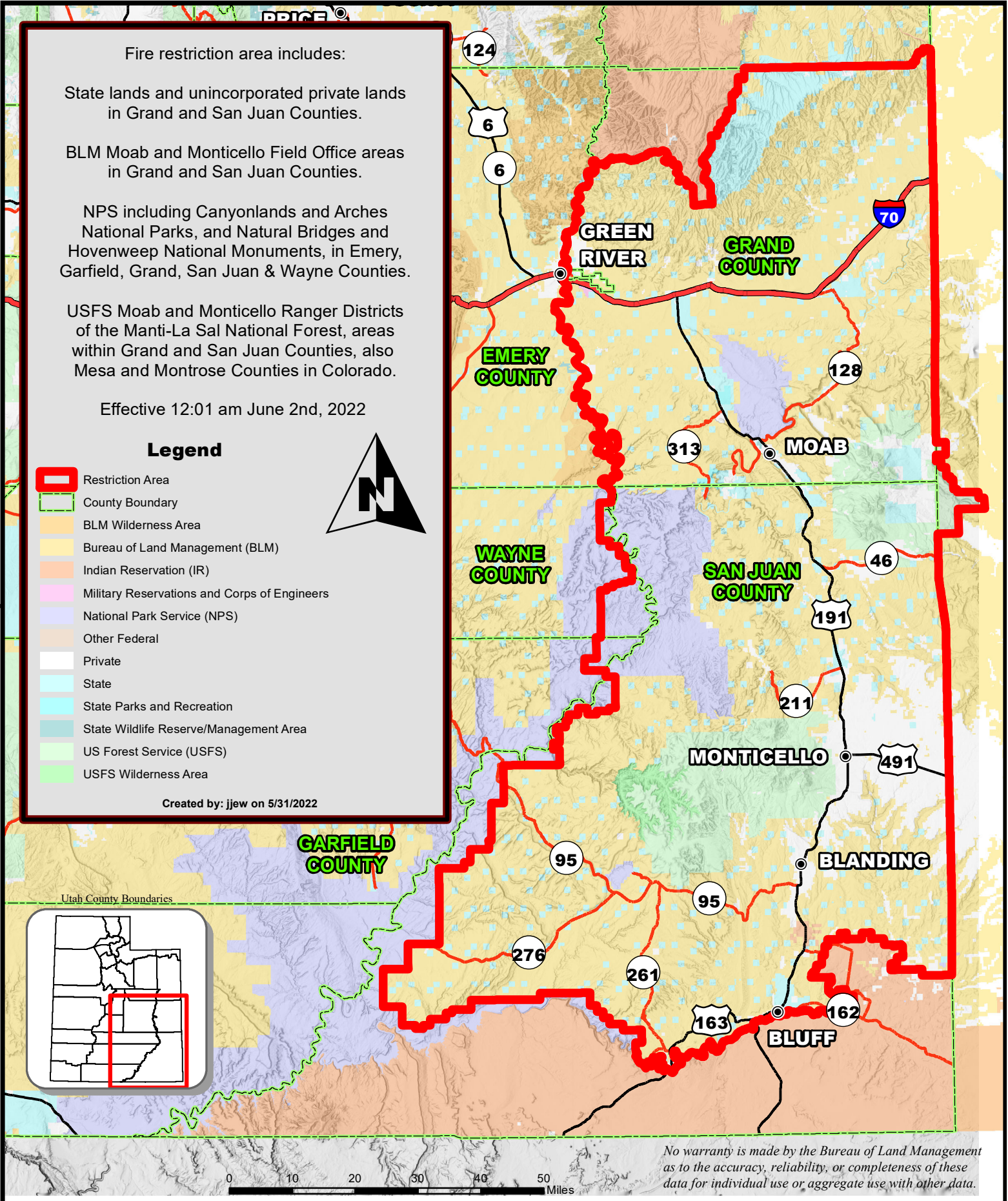
USFS Moab and Monticello Ranger Districts of the Manti-La Sal National Forest, areas within Grand and San Juan Counties, also Mesa and Montrose Counties in Colorado.

Effective 12:01 am June 2nd, 2022

Legend

- Restriction Area
- County Boundary
- BLM Wilderness Area
- Bureau of Land Management (BLM)
- Indian Reservation (IR)
- Military Reservations and Corps of Engineers
- National Park Service (NPS)
- Other Federal
- Private
- State
- State Parks and Recreation
- State Wildlife Reserve/Management Area
- US Forest Service (USFS)
- USFS Wilderness Area

Created by: jjew on 5/31/2022



No warranty is made by the Bureau of Land Management as to the accuracy, reliability, or completeness of these data for individual use or aggregate use with other data.