

Tread Lightly

Travel and recreate with minimum impact.

Respect the environment and the rights of others.

Educate yourself, plan and prepare before you go.

Allow for future use of the outdoors by leaving it better than you found it.

Discover the rewards of responsible recreation.

treadlightly!

<https://treadlightly.org/>

Leave No Trace

We encourage visitors to adhere to the seven Leave No Trace principles on all BLM-managed public lands.

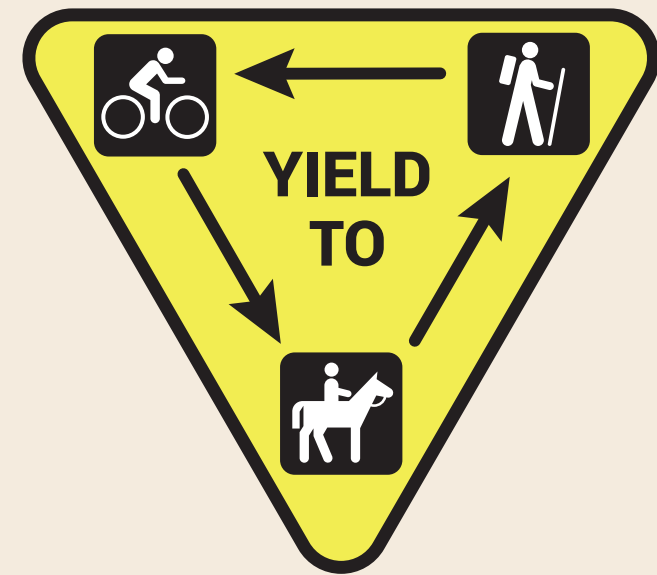
- Plan Ahead and Prepare
- Travel and Camp on Durable Surfaces
- Dispose of Waste Properly
- Leave What You Find
- Minimize Campfire Impacts
- Respect Wildlife
- Be Considerate of Other Visitors

Each year millions of people visit America's wild lands. Skilled users help maintain the primitive backcountry experience for all. Remember, Leave No Trace depends more on attitude than it does on rules.



<https://lnt.org/>

Trail Etiquette



Trail Etiquette

- Respect all trail designations and travel restrictions.
- Ensure clothing, equipment and fodder is free of invasive species.
- Slow down for curves and hills, when visibility is limited and when other users are present.
- Keep noise and dust down.
- Keep pets under control. Some trails require dogs to be leashed.
- Be familiar with local rules.
- Leave gates in the condition you found them.

Rights of Way

- Yield the right of way to those passing you from behind or traveling uphill.
- Motorized vehicles yield to mountain bikes, runners, hikers and horses.
- Mountain bikes yield to runners, hikers and horses.
- Runners and hikers yield to horses.

Welcome

Welcome to the public lands managed by the Bureau of Land Management (BLM) in Alaska. The BLM manages more than 70 million acres of public land in Alaska. These lands are yours to enjoy and use for a variety of recreational opportunities. Your visit to BLM-managed public lands in Alaska will offer you a once in a lifetime experience. Whether you're hiking in the mountains, exploring the treeless tundra, or fishing in a freshwater stream, you'll experience the open landscapes of BLM-managed public lands. Unless otherwise posted, all public lands are available for recreation use. However, please remember that BLM manages public lands for other uses, such as energy and mineral development, wildlife habitat, and conserving natural, cultural, and historic resources. This publication will give you a general idea of where recreation opportunities exist on public lands in Alaska. Please note the location of the BLM offices throughout the state. BLM staff are happy to assist you while you are enjoying Alaska's public lands.



Windy Arch, near Windy Gap in the White Mountains National Recreation Area.

Developed Campgrounds

Map #	Campground Name	# of Sites	Season of Use	Vault Toilet	Water	Fee
13	Arctic Circle	22	June - Sept.	Y	N	Y*
32	Brushkana Creek	21	June - Sept.	Y	Y	Y
25	Cripple Creek	21	June - Sept.	Y	Y	Y
47	Eagle	16	June - Sept.	Y	N	Y
16	Five Mile	8	June - Sept.	Y	Y	Y**
4	Galbraith Lake	18	June - Sept.	Y	N	Y**
8	Marion Creek	27	June - Sept.	Y	Y	Y
24	Mount Prindle	13	June - Sept.	Y	Y	Y
22	Ophir Creek	19	June - Sept.	Y	Y	Y
38	Paxson	50	June - Sept.	Y	Y	Y
52	Salmon Lake	6	June - Sept.	Y	N	N
39	Sourdough Creek	42	June - Sept.	Y	Y	Y
36	Tangle Lakes	27	June - Sept.	Y	Y	Y
45	Walker Fork	20	June - Sept.	Y	Y	Y
42	West Fork	25	June - Sept.	Y	N	Y

Y = service available N = service not available * Beginning summer 2022 ** Beginning summer 2023

Dispersed Camping

Unless otherwise posted, most BLM Alaska managed public lands provide excellent opportunities for dispersed camping. However, make sure to follow these guidelines. In general, a 14-day occupancy limit within a 28-day period applies across the state for any eligible camping location on BLM-managed lands.



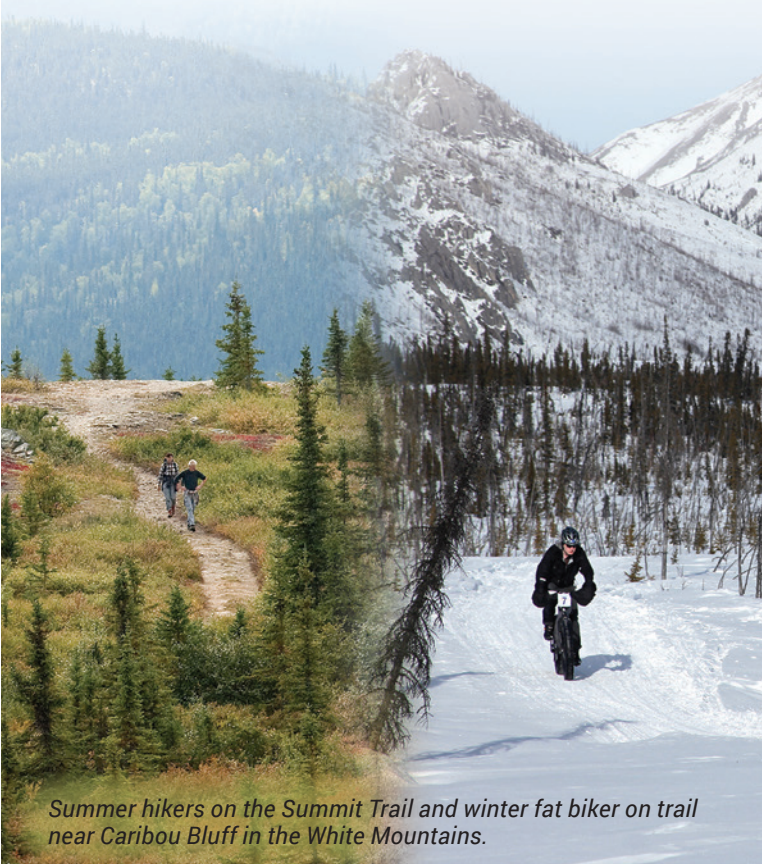
Dispersed camping along the Gulkana River.

The 14-day limit may be reached either through several separate visits or through 14 days of continuous occupation during the 28-day period. After 14 days of occupation, campers must move outside of a 2-mile or greater radius of the previous location. In addition, no person shall leave personal property unattended on public lands for a period of more than 72 hours. Unattended personal property will be counted toward the 14-day camp limit. Check with your local BLM office for special guidelines in your area and learn more at www.blm.gov/programs/recreation/camping

White Mountains National Recreation Area

Located just an hour's drive from Fairbanks, the one-million-acre White Mountains National Recreation Area offers stunning scenery, peaceful solitude, and outstanding opportunities for year-round recreation.

Summer visitors to the White Mountains fish, hike, ride, and camp under Alaska's midnight sun. Nome Creek Road provides access to two campgrounds, non-motorized and motorized trails, a gold-panning area, and a departure point for float trips on Beaver Creek Wild and Scenic River. In winter, visitors travel by ski, fat bike, snowshoe, dog team and snowmobile to enjoy the 12 public-use cabins available for reservation on Recreation.gov, and 250 miles of groomed trails that make the White Mountains one of Interior Alaska's premier winter destinations.



Summer hikers on the Summit Trail and winter fat biker on trail near Caribou Bluff in the White Mountains.

National Conservation Lands

The BLM's National Conservation Lands encompass some of the nation's most spectacular historic and wild landscapes. Nationwide, National Conservation Lands units include National Monuments, National Conservation Areas, Wild & Scenic Rivers, Wilderness Areas, Wilderness Study Areas, and National Scenic and Historic Trails. In Alaska, the BLM manages more than two million acres of National Conservation Lands, including the Iditarod National Historic Trail, six Wild and Scenic Rivers, one Wilderness Study Area, and the Steese National Conservation Area. These resources offer exceptional opportunities for solitude, exploration, research, recreation, and education.

Iditarod National Historic Trail



Tripod marking the INHT at Old Woman public shelter cabin.

The Iditarod National Historic Trail (INHT) commemorates a 2,400-mile system of winter routes that first connected ancient Native villages and later opened Alaska to the last great American gold rush. Today, the spirit of the Iditarod lives on when racers put their minds, muscles, machines,

or animals to work in epic long-distance winter racing linking Alaska communities large and small, including the 1,000-mile Iditarod Sled Dog Race from Anchorage to Nome. BLM manages about 150 miles of trail and four public shelter cabins. Find out more at www.blm.gov/alaska/Iditarod

Wild and Scenic Rivers

Wild and Scenic Rivers (WSR) are designated into the National Wild and Scenic Rivers System to preserve their free-flowing condition and to protect and enhance their "outstandingly remarkable values" including scenic, recreational, cultural, geologic, historic, fish and wildlife.

BLM Alaska manages six WSRs, including Beaver Creek, Birch Creek, Delta, Fortymile, Gulkana, and Unalakleet, totaling 952 miles. Wild and Scenic Rivers offer visitors outstanding opportunities for adventure and scenery.



Rafting Birch Creek WSR.

Steese National Conservation Area

The Steese National Conservation Area—located 60 miles northeast of Fairbanks, is divided into northern and southern units by the Steese Highway. This 1.2-million-acre area is home to caribou, Dall sheep, bears, wolves, wolverine, other furbearers, and raptors. The 27-mile Pinnell Mountain National Recreation Trail provides excellent vistas of the alpine tundra and ridge-tops. In summer, the Birch Creek Wild and Scenic River is a primary recreational attraction winding through the vast expanse of the Yukon Flats in Central Alaska.



Caribou in the Steese National Conservation Area.

Public Access

BLM Alaska managed public lands are intermingled with private, state, Tribal, and a variety of other jurisdictions. A visitor may legally access public lands via:

- A public trail, road, or highway;
- A navigable water;
- From adjacent public or state lands that are legally accessible;
- Across adjacent private land with permission from landowner; or via a valid 17b public easement. Information on 17b easements and maps can be found at <https://www.blm.gov/alaska/17b-easements>;
- In an aircraft.

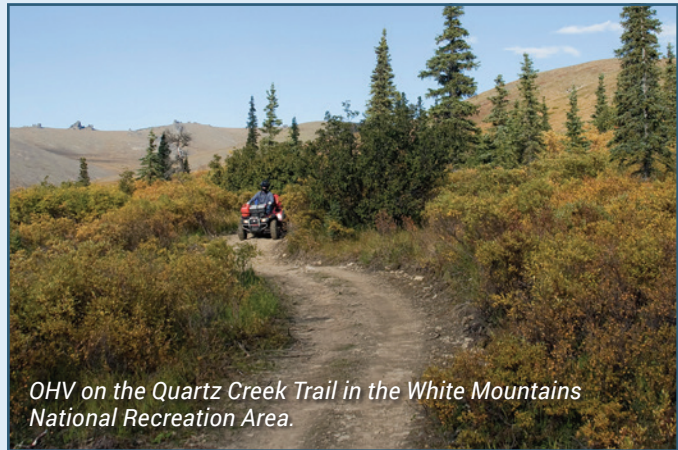
BLM visitors are responsible for knowing their location and applicable regulations. Appropriate public land users remain on legal routes, obey all signs, respect private property, and avoid resource damage. The best way to ensure a successful outing is to check with the nearest BLM office for up-to-date access information in your area. Your local BLM office can also supply you with recreation permits and information on specific recreation opportunities, such as camping, fishing, wildlife watching, hiking, off-highway vehicle travel and snowmobiling. For more information, go to www.blm.gov/media/public-room/alaska. Also, be sure to check the State Department of Transportation (DOT) Highway Safety page <https://dot.alaska.gov/highwaysafety> before travelling.



Hiking the Pinnell Mountain National Recreation Trail.

OHV

Numerous opportunities for off-highway vehicle (OHV) recreation exist on BLM-managed public lands. Miles of routes await OHV enthusiasts for both summer and winter seasons. Please obey all signs regarding the management of public lands and routes. All OHVs and snowmobiles must comply with State of Alaska Department of Motor Vehicle (DMV) regulations, permitting and restrictions. Learn more at DMV's Snowmobiles and All Terrain Vehicles registration page (<https://doa.alaska.gov/dmv/reg/snow.htm>). For detailed OHV trails information and recreational opportunities, visit the BLM's [Top Motorized Opportunity StoryMap](http://www.blm.gov/programs/recreation/camping).



OHV on the Quartz Creek Trail in the White Mountains National Recreation Area.

Electric Bicycles (E-bikes)

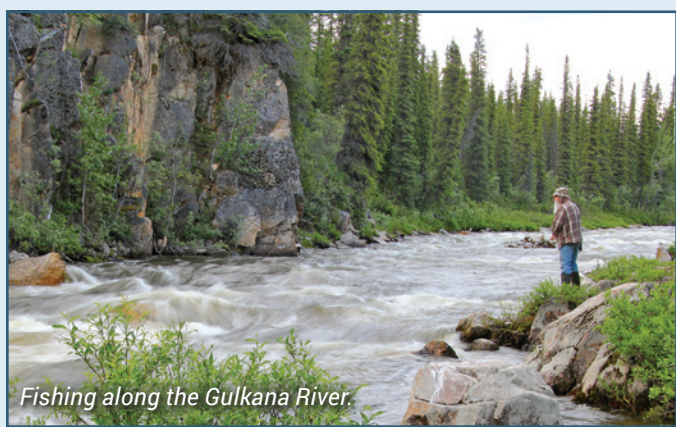
An e-bike is a bicycle with a small electric motor of not more than 750 watts (one horsepower) which assists in the operation of the bicycle and reduces the physical exertion demands on the rider. E-bikes may have two or three wheels and must have fully operable pedals. BLM-managed public lands offer many opportunities for riding e-bikes, including any area or trail where OHVs are currently allowed. E-bikes are not allowed on non-motorized trails, unless expressly authorized for use by the local office. To stay up-to-date with the latest e-bike information as it becomes available on BLM-managed public lands, contact your local BLM office, or search www.blm.gov/programs/recreation/e-bikes.

Boating and Fishing



Canoers paddling Tangle Lakes.

BLM-managed public lands provide access to boating and fishing on a variety of lakes, streams and rivers. Do your part to prevent the spread of invasive species. Remove all visible mud, plants, fish and other organisms from your equipment. Eliminate all water from equipment before you depart an area and avoid transferring wet equipment from stream to stream. Remember that Alaska's waters can be remote and frigid. File a trip plan with friends or family prior to beginning a float trip and ensure personal flotation devices and emergency supplies are available at all times. The Alaska Department of Fish and Game (<https://www.adfg.alaska.gov>) regulates fishing licenses, boating permits and registration. You can find information on these topics, as well as places to fish and boat, fish stocking reports, and additional maps on their [Sports Fishing page](http://www.adfg.alaska.gov/index.cfm?adfg=huntingmaps.byspecies).



Fishing along the Gulkana River.

Hunting

The Alaska Department of Fish and Game administers hunting permits, licenses, and game management areas in the State of Alaska. The BLM, in partnership with the State of Alaska, is committed to facilitating access to public lands for hunting, fishing and other forms of recreation. Please make sure to check the land status prior to your hunt and take necessary maps or mobile device mapping apps on any trip off the beaten track. You can find maps which cover game management areas and land status at www.adfg.alaska.gov/index.cfm?adfg=huntingmaps.byspecies



Caribou hunting on the Quartz Creek Trail in the White Mountains National Recreation Area.

When you're planning your hunting excursion, remember that it's not always possible to retrieve downed game with a vehicle. Come prepared by bringing a nonmotorized game cart, pack frame, capable friend or pack animal to help. Avoid hunting close to private property lines, as animals may cross onto them before they can be recovered. More important than taking home a game animal is making sure you and your companions get home safely at the end of the day.

Make sure to:

- Tell a friend or family member where you are going and when you expect to be back.
- Be prepared for Alaska's changing weather while out in the field.
- Exercise the utmost caution with knives while processing your animals and supervise young hunters while they are processing their animals.
- Treat every firearm as if it's loaded.

Learn More

BLM's mission is to sustain the health, diversity, and productivity of America's public lands for the use and enjoyment of present and future generations. BLM-managed public lands are resources for people of all ages to engage in learning about the interconnections among people, cultural heritage, and the natural world. Engaging people through education, recreation, and stewardship of these public lands helps them connect to these resources.

Watchable Wildlife

Learn where, when and how to look for Alaska's abundant and iconic species. This field guide directs you to some of the best wildlife viewing locations on BLM-managed public lands. Use it to plan your journey, and learn about Alaska's diverse habitats and wildlife. Grab a copy of the [BLM Alaska Watchable Wildlife Guide](http://www.blm.gov/alaska/watchable-wildlife-guide) at one our offices or download it from our website.



Campbell Creek Science Center



The BLM Campbell Creek Science Center (CCSC) supports statewide outreach for environmental education, interpretation, and youth engagement for BLM Alaska. CCSC provides environmental education programs and resources for children and adults, including distance learning, field trips and on-location events, and professional development training in interpretation, engagement, place-based service learning, and natural resources guiding skills. For more information, go to www.blm.gov/ccsc.

Cover photo: Canoers float the Fortymile Wild and Scenic River.

Contact Us

Alaska State Office
222 W. 7th Ave., #13
Anchorage, AK 99513
907-271-5960
www.blm.gov/alaska

Anchorage Field Office
4700 BLM Road
Anchorage, AK 99507
907-267-1246
www.blm.gov/office/anchorage-field-office

Nome Field Station
P.O. Box 952
Nome, AK 99762
907-443-2177
www.blm.gov/office/nome-field-station

Glennallen Field Office
P.O. Box 147
Mile Post 186.5 Glenn Highway
Glennallen, AK 99588
907-822-3217
www.blm.gov/office/glennallen-field-office

Fairbanks District Office
222 University Avenue
Fairbanks, Alaska 99709
907-474-2200
www.blm.gov/office/fairbanks-district-office

Barrow Field Station
P.O. Box 250
Barrow, AK 99723
907-852-2757
www.blm.gov/office/barrow-field-station

Visit us on Facebook at:

www.facebook.com/BLMAlaska

Follow us on Twitter at:

www.twitter.com/BLMAlaska

Explore all of our FREE georeferenced maps at:

www.blm.gov/maps/georeferenced-PDFs

All photos courtesy of BLM Alaska.

BLM/AK/GI-90/028+8300+930 Rev 2022



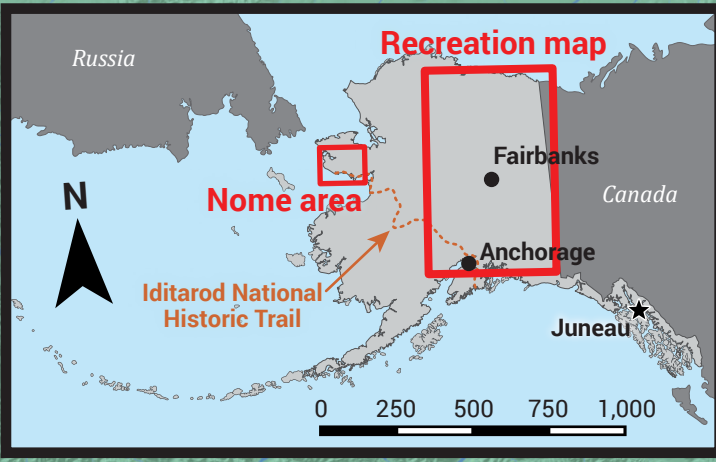
U.S. Department of the Interior
Bureau of Land Management

Recreation in Alaska



Map & Guide

BLM Alaska Recreation Map



Legend

BLM-managed public lands

BLM-managed public lands with special designations

NCA = National Conservation Area

NRA = National Recreation Area

National Park Service

U.S. Fish & Wildlife Service

NWR = National Wildlife Refuge

U.S. Forest Service

Non-federal ownership

BLM Office

Communities

Highways

DOT roads

Iditarod National Historic Trail (INHT)

Rivers

Recreation Symbols

BLM Recreation Site

CG = Campground

Wild and Scenic River (WSR)

ADA Accessible

Auto Touring

Boat Ramp

Camping

Cross-Country Skiing

Environmental Education

Fishing

Hiking

Historic Site

Horseback Riding

Hunting

Interpretive Exhibit Panel

Interpretive Trail

Motorized Boating

Mountain Biking

Non-Motorized Boating

OHV Riding

Picnicking

Public Restroom

Public Shelter Cabin

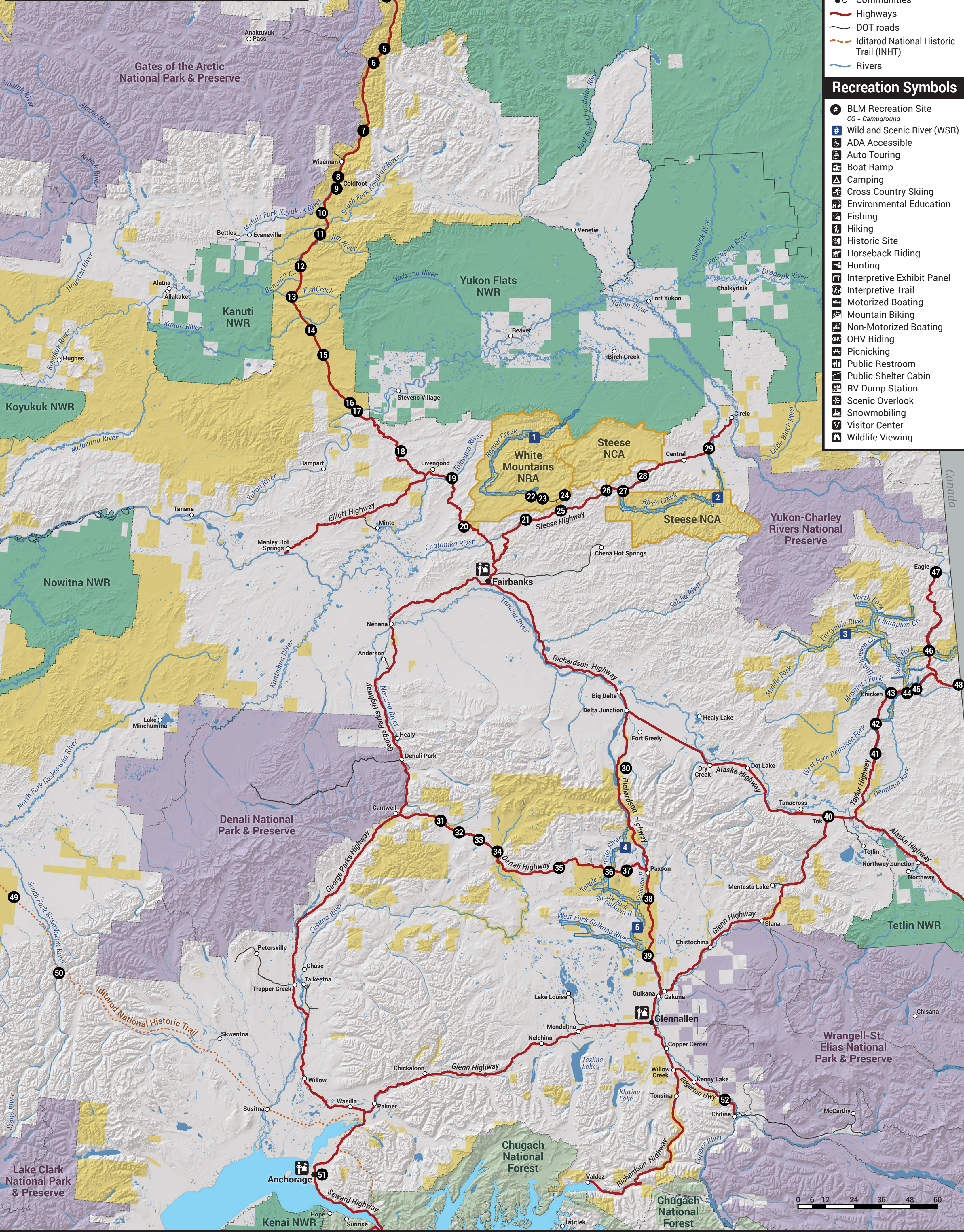
RV Dump Station

Scenic Overlook

Snowmobiling

Visitor Center

Wildlife Viewing



<div>1 Last Chance</div> <div>2 Sag River Overlook</div> <div>3 Happy Valley</div> <div>4 Galbraith Lake Campground</div> <div>5 Atigun Pass</div> <div>6 Farthest North Spruce</div> <div>7 Sukakpak Mountain Wayside</div> <div>8 Marion Creek Campground</div> <div>9 Arctic Interagency Visitor Center</div> <div>10 Chapman Lake Wildlife Viewing</div> <div>11 Graying Lake</div> <div>12 Gobblers Knob</div>	<div>13 Arctic Circle Campground</div> <div>14 Finger Mountain Trailhead</div> <div>15 86 Mile Overlook</div> <div>16 Five Mile Campground</div> <div>17 Yukon River Contact Station</div> <div>18 Hess Creek Overlook</div> <div>19 Colorado Creek Trailhead</div> <div>20 Wickersham Dome Trailhead</div> <div>21 McKay Creek Trailhead</div> <div>22 Ophir Creek Campground</div> <div>23 Table Top Mountain Trailhead</div>	<div>24 Mount Prindle Campground</div> <div>25 Cripple Creek CG</div> <div>26 Twelvemile Summit Wayside</div> <div>27 Upper Birch Creek Wayside</div> <div>28 Eagle Summit Wayside</div> <div>29 Lower Birch Creek Wayside</div> <div>30 Coal Mine Road/Jarvis Creek Trailhead</div> <div>31 Denali Highway Orientation Sign</div> <div>32 Brushkana Creek CG</div> <div>33 Alaska Range Interpretive Sign & Denali Hwy Mile 94 Land in Motion</div>	<div>34 Alaska Range Viewpoint</div> <div>35 Denali Highway Mile 50 Pools of Life</div> <div>36 Tangle Lakes CG</div> <div>37 Denali Hwy Mile 13 Interp Site & Wrangell Mountain Viewpoint</div> <div>38 Paxson Lake CG</div> <div>39 Sourdough Creek CG</div> <div>40 Tok Visitor Center</div> <div>41 Mount Fairplay Wayside</div> <div>42 West Fork CG</div> <div>43 Mosquito Fork Bridge Wayside</div> <div>44 South Fork Bridge Wayside</div> <div>45 Wade Creek Wayside</div> <div>46 Fortymile Bridge Wayside</div>	<div>47 Fort Egbert Historic Site</div> <div>48 Eagle Campground</div> <div>49 Davis Dome Wayside</div> <div>50 Bear Creek Public Shelter Cabin</div> <div>51 Rohn Public Shelter Cabin</div> <div>52 Campbell Creek Science Center</div> <div>53 Campbell Tract Special Recreation Management Area</div> <div>1 Beaver Creek Wild and Scenic River</div> <div>2 Birch Creek Wild and Scenic River</div> <div>3 Fortymile Wild and Scenic River</div> <div>4 Delta Wild and Scenic River</div> <div>5 Gulkana Wild and Scenic River</div>
---	---	--	--	---