

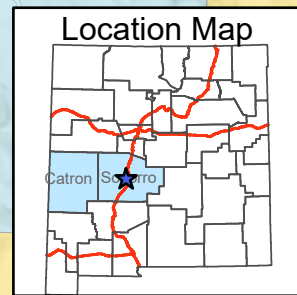
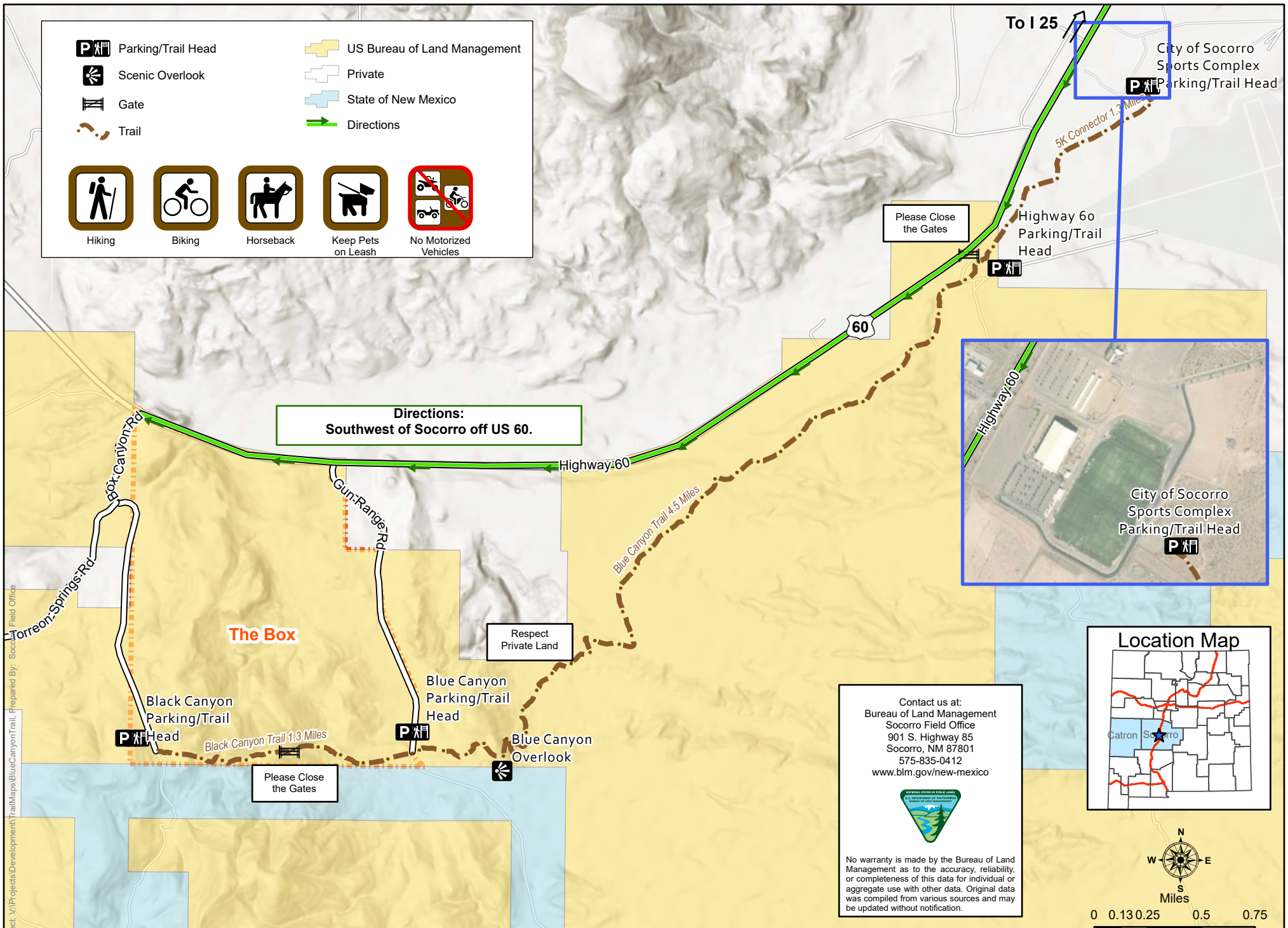
# Blue Canyon Trail

	Parking/Trail Head		US Bureau of Land Management
	Scenic Overlook		Private
	Gate		State of New Mexico
	Trail		Directions

Hiking	Biking	Horseback	Keep Pets on Leash	No Motorized Vehicles

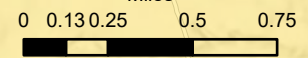
**Directions:**  
Southwest of Socorro off US 60.



Contact us at:  
Bureau of Land Management  
Socorro Field Office  
901 S. Highway 85  
Socorro, NM 87801  
575-835-0412  
[www.blm.gov/new-mexico](http://www.blm.gov/new-mexico)



No warranty is made by the Bureau of Land Management as to the accuracy, reliability, or completeness of this data for individual or aggregate use with other data. Original data was compiled from various sources and may be updated without notification.



Project: \Projects\Development\TrailMaps\BlueCanyonTrail. Prepared By: Socorro Field Office