



U.S. Department of the Interior
Bureau of Land Management

BLM Eastern States Annual Report Fiscal Year 2020





TABLE OF CONTENTS

STATE DIRECTOR'S MESSAGE	3
EASTERN STATES MAP	4
ABOUT US	5
EASTERN STATES JURISDICTION	6
FINANCE AND BUDGET	7
FINANCE AND BUDGET (cont.)	8
GEOSPATIAL SERVICES, CADASTRAL SURVEY, AND LANDS AND REALTY	9
WILD HORSES AND BURROS	10
RECREATION AND OUTDOOR HERITAGE RESOURCES	11
WILDLAND FIRE	12
ENERGY AND MINERALS	13
EASTERN STATES OFFICES	14
NOTES	15

A MESSAGE FROM STATE DIRECTOR MITCHELL LEVERETTE

As “Guardians of the Past and Stewards for the Future,” the Bureau of Land Management Eastern States is proud to manage diverse public lands resources across an array of important programs. From National Conservation Lands, cherished natural and cultural resources, wild horses and burros, premier recreation opportunities, supporting the valor of our wildland fire community, maintaining historic General Land Office records, to energy and minerals for our nation’s infrastructure needs – our diverse portfolio is challenging and we are privileged to do this work on behalf of all Americans.

Fiscal Year 2020 was fraught with challenges owing to the COVID-19 pandemic. The BLM-ES family stepped up to meet those challenges in executing the multiple-use mission – through being adaptive and spearheading innovation to uphold our commitment as public servants. Health and safety for the public, as well as for my team, continues to be my number one priority. I am astounded by the resilience of BLM-ES employees. Their collective ability to adapt and continue to manage YOUR public lands with the highest level of customer service is commendable.

Our team paved the way forward in using the latest technology to complete our day-to-day business operations. In the virtual work environment that we have grown accustomed to – we held online wild horse and burro adoption events, regularly met with our partners and stakeholders through virtual meetings and held successful online oil and gas lease sales. In FY 2020, the nation experienced a particularly significant and dangerous wildland fire season. Our Jackson Hotshots were some of the first wildland firefighters dispatched to respond and through their valor, they helped develop safety protocols to minimize COVID-19 transmission in the field – measures that were adopted nationally. BLM-ES also safely executed an office move to Falls Church, Virginia, during the pandemic. We continue to innovate as we course through this unique stage of American history.

Our operating principles include maintaining an environment where public and employee safety is valued; building an inclusive and accountable workplace; providing high-quality internal and external customer service; and engaging in collaboration and cooperation. These are principles that serve as a blueprint for our success and it is truly an honor to work alongside a dedicated team on such important efforts. I invite you to learn more about BLM-ES in the following pages and to visit us online at www.blm.gov/eastern-states for more information.

Current BLM Eastern States Leadership Team

Mitchell Leverette - State Director

Leah Baker - Associate State Director

Anthony Bobo - Deputy State Director,
Natural Resources

Leigh Espy - Deputy State Director, Support
Services

Dave Radford - Deputy State Director,
Geospatial Services

Bart Kicklighter – State Fire Management
Officer

Sean Waggoner – Special Agent In Charge,
Office of Law Enforcement and Security

Jayson Barangan – Lead Public Affairs
Specialist (Acting)

Stephanie Carman – Northeastern States
District Manager (Acting)

Bob Swithers - Southeastern States District
Manager

On The Web

FIND MORE INFORMATION

<https://www.blm.gov/eastern-states>

FOLLOW US

www.facebook.com/BLMEasternStates/

TWEET WITH US

https://twitter.com/BLM_ES

WATCH OUR VIDEOS

www.youtube.com/blmeasternstates

CHECK OUT OUR PHOTOS

www.flickr.com/easternstates

READ OUR STORIES

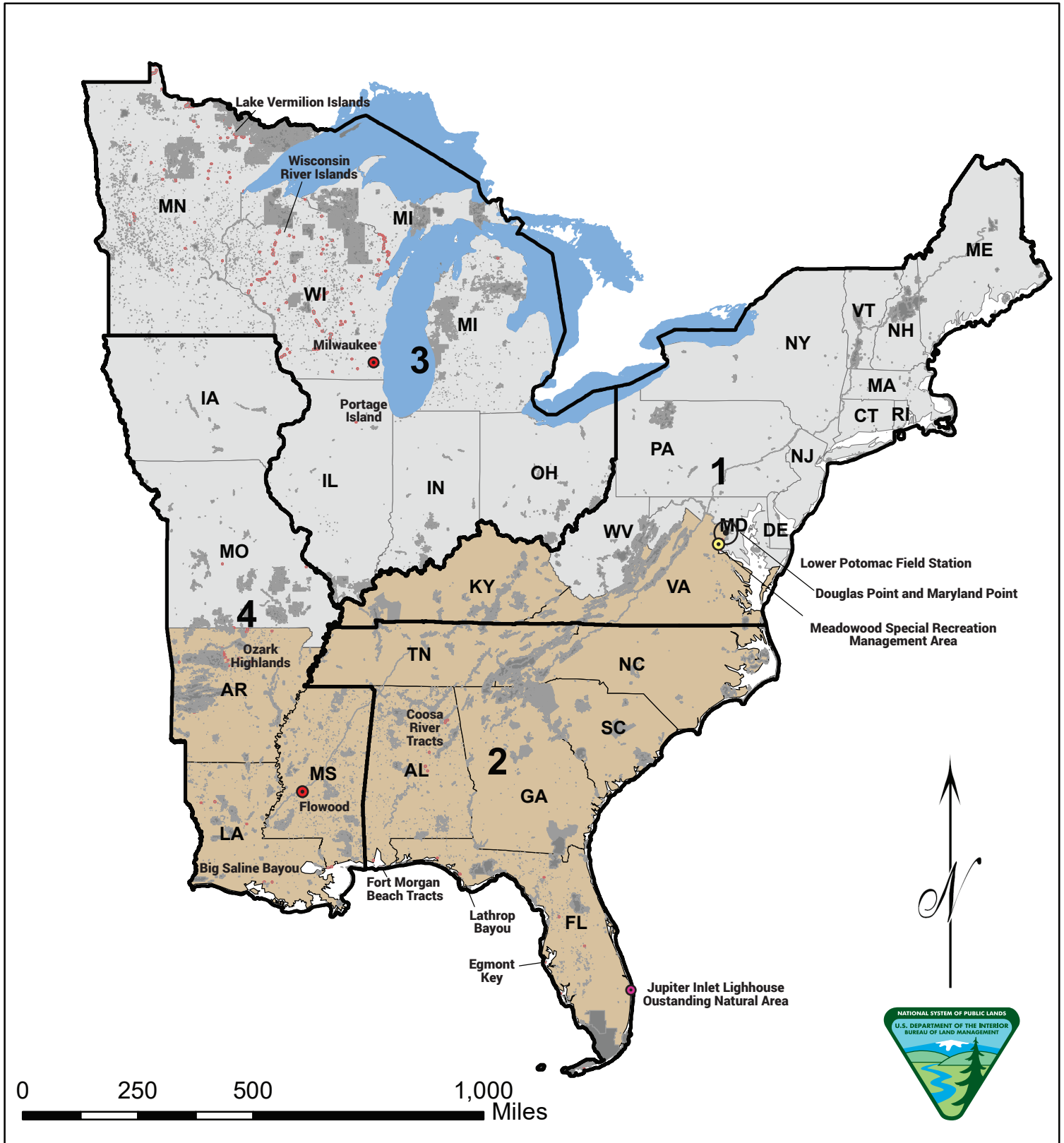
mypubliclands.tumblr.com

Cover photo: Jupiter Inlet Lighthouse
Outstanding Natural Area - Jupiter, Florida



Mitchell Leverette

Bureau of Land Management Eastern States



DOI Unified Regions

- 1 - North Atlantic - Appalachian
- 2 - South Atlantic Gulf
- 3 - Great Lakes
- 4 - Mississippi Basin

Districts

- Southeastern
- Northeastern

Administrative Unit

- State Office
- District Office
- Lower Potomac Field Station
- Jupiter Lighthouse Outstanding Natural Area

- BLM Managed Surface (40,000 Acres)
 - Other Federal Surface Lands (approximately 37.8 million acres)
- Source: PAD-US

Note: BLM manages approximately 39 million acres of subsurface which approximately 30 million acres are beneath the federal surface and approximately 9 million acres are beneath private surface.

No warranty is made by Bureau of Land Management as to the accuracy, reliability, or completeness of this data for individual use or aggregate use with other data.

ABOUT US

The BLM was established in 1946, but its history traces back to 1812 – when the General Land Office was formed to encourage the westward migration for homesteading on acquired lands. Over time, with shifting perspectives and values on public lands, Congress merged the GLO with the U.S. Grazing Service, thereby creating the BLM. **Our mission: to sustain the health, diversity, and productivity of public lands for the use and enjoyment of present and future generations.**

The BLM-ES organization administers public lands for approximately 40,000 surface acres and 39 million acres of subsurface mineral estate across 31 states east of and adjoining the Mississippi River. We are responsible for striking a balance between allowing for responsible energy development, providing quality recreation opportunities, sustaining natural and cultural resources, and providing meaningful outreach through our education programs.

The Natural Resources Division provides oversight for subsurface mineral estate for parcels scattered throughout the eastern United States. Oil and natural gas development, as well as hard rock mining from federal minerals, are important national economic drivers. This division also provides recreation oversight for pockets of surface estate from Minnesota to Florida; helps manage populations of gathered wild horses and burros from the West by placing them into private care in the East; and plays an integral role in growing the next generation of tomorrow's public lands managers by tapping the enthusiasm of today's youth through volunteer programs.

Two districts in Milwaukee, Wisconsin, and Flowood, Mississippi, are charged with directing on-the-ground projects. From managing wild horse and burro adoptions and sales, to analyzing and minimizing environmental impacts to ensure responsible use is occurring on public lands, our district employees are dedicated public servants who execute the multiple-use mandate through leveraging our valued partners and volunteers.

The Jackson Interagency Hotshots protect life, property, and natural resources. The Hotshots are dispatched to suppress fire incidents throughout the country and assist in managing resources in response to national emergencies.

As custodians for historic land patents that date back to shortly after the United States of America became a nation, BLM-ES continues to pave the way in modernizing access to these records by digitizing and making them available online. Generated by our nation's first surveyors, these documents (issued by the GLO between 1812-1947) are timeless legal documents sought by public and private surveyors, land title companies, and genealogists.

We are proud public servants. In FY 2019, activities authorized on BLM-ES managed lands and mineral estate generated \$1.2 billion in economic output, supporting 5,000 jobs.

Eastern States Total Economic Output and Jobs for Fiscal Year 2019



\$1.2 billion

Oil and Gas:



\$368.0 million

Coal:



\$111.3 million

Nonenergy Minerals:



\$704.9 million

Recreation:



\$13.5 million

Jobs:



5,000

Rent, Royalties, and bonuses
based from energy production:



\$35 million

Historic Land Titles dating back
to 1820:



12 million

Wild horses and burros adopted
since 1976:



81,000

Recreation visits to public lands:



118,875

Volunteer hours contributed to
public lands management in FY19:



19,109

EASTERN STATES JURISDICTION

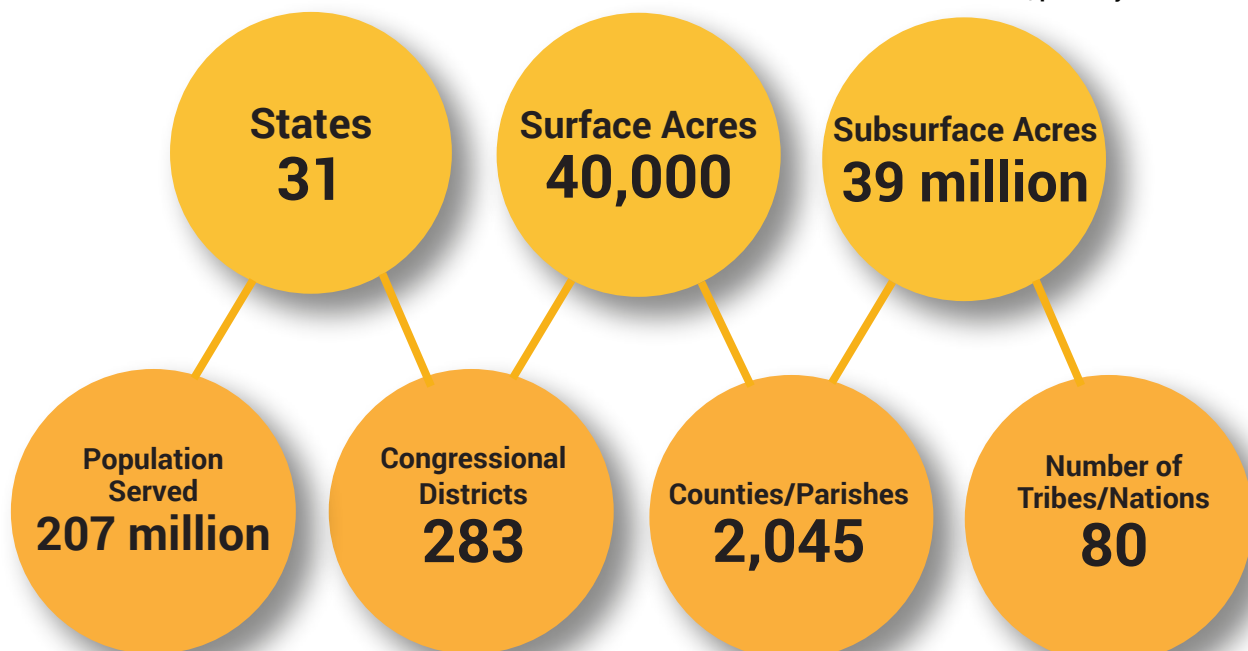


Thunder Bay, Michigan, photo by BLM

BLM-ES is unique in many ways, from the land we manage, to the population we serve. Our reach spans 31 states east of the Mississippi River and we host a variety of people, resources, terrain, and minerals. BLM-ES also falls under four DOI Unified Regions: North Atlantic-Appalachian, South Atlantic-Gulf, Great Lakes, and Mississippi Basin. Across these regions, we work closely with a wide array of local, state, federal, law enforcement, and Tribal partners, as well as numerous user groups and stakeholders. These partnerships enable us to provide the highest quality service to the public.



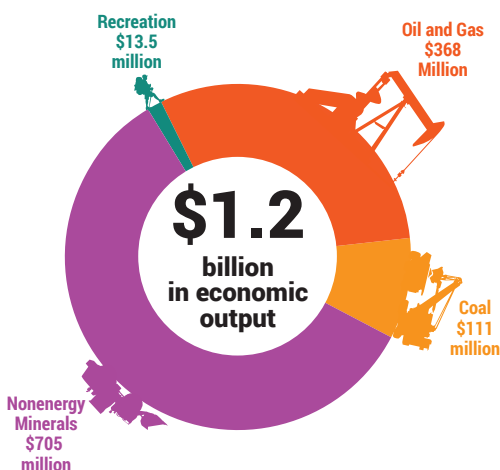
Menomonee River in Wisconsin, photo by BLM



FINANCE AND BUDGET

FY20 MANAGEMENT OF LANDS AND RESOURCES APPROPRIATIONS

Subactivity Name	Amount Allocated
Rangeland Management	\$212,000
Cultural Resources Management	\$175,000
Wild Horse and Burro	\$3,294,000
Aquatic Habitat Management	\$361,000
Wildlife Habitat Management	\$818,000
Recreation Resources Management	\$556,000
Oil and Gas	\$3,001,000
Oil and Gas Inspections and Enforcement	\$1,431,000
Coal	\$443,000
Other Minerals Resources	\$692,000
Renewable Energy Management	\$250,000
Alaska Conveyance	\$145,000
Cadastral Lands and Realty	\$3,312,000
Planning	\$1,518,149
Law Enforcement	\$5,000
Abandoned Mine Lands and Hazardous Materials Management	\$60,000
Deferred Maintenance	\$1,138,000
Annual Maintenance and Operations Costs	\$150,000
National Monument and National Conservation Areas	\$400,000
Admin Support	\$2,207,840
Bureau Wide Fixed Costs	\$541,000
Mining Law	\$279,000
Fire Preparedness	\$802,000
Hazardous Fuels	\$275,000
Total:	\$22,065,989



TOTAL ECONOMIC OUTPUT AND JOBS FOR FISCAL YEAR 2019

Diverse activities authorized on BLM-managed lands generate billions of dollars in economic output throughout the region. In the eastern United States, this economic activity supported 5,000 jobs and contributed substantial revenue to the U.S. Treasury and state governments, mostly through royalties on minerals.

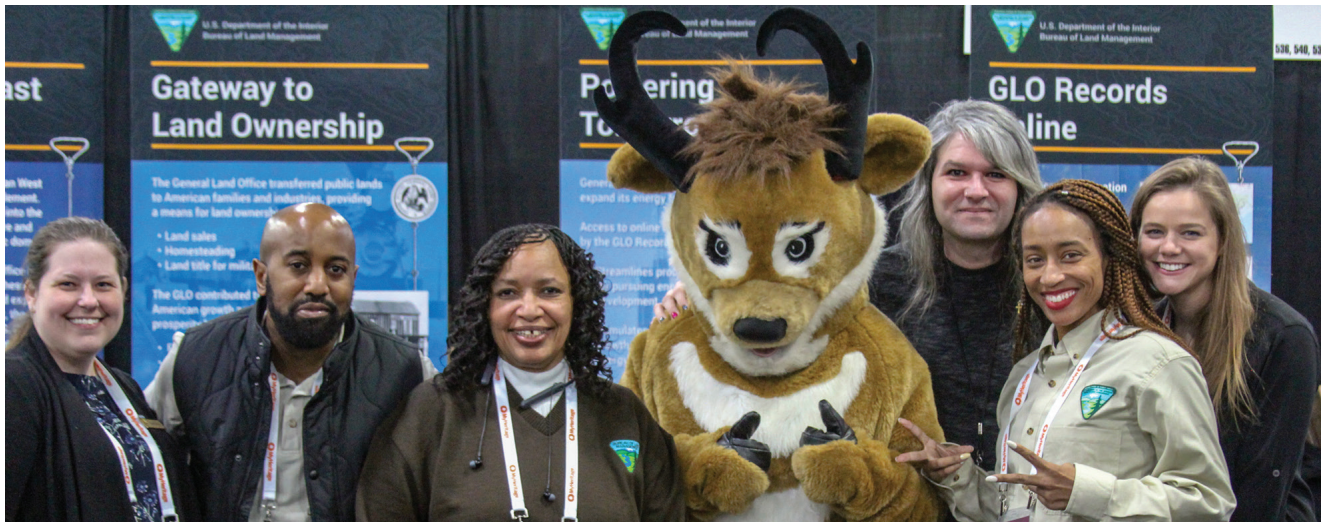
FINANCE AND BUDGET (cont.)

PAYMENTS IN LIEU OF TAXES

Payments in Lieu of Taxes are made to local governments to help offset their inability to tax federal property. The payments are made annually for tax-exempt federal lands administered by U.S. Department of the Interior agencies, including the Bureau of Land Management, the National Park Service, and the U.S. Fish and Wildlife Service; the U.S. Department of Agriculture Forest Service, and for federal water projects and some military installations. The below table provides the PILT payments for eastern states and the District of Columbia.

State	2020
Alabama	\$1,477,641
Arkansas	\$7,681,574
Connecticut	\$34,293
Delaware	\$24,184
District of Columbia	\$23,986
Florida	\$6,054,648
Georgia	\$2,955,224
Illinois	\$1,357,757
Indiana	\$674,670
Iowa	\$541,287
Kentucky	\$2,816,608
Louisiana	\$1,377,414
Maine	\$742,318
Maryland	\$121,426
Massachusetts	\$122,551
Michigan	\$5,290,103
Minnesota	\$4,727,560
Mississippi	\$2,324,462
Missouri	\$4,472,012
New Hampshire	\$2,095,636
New Jersey	\$122,225
New York	\$175,363
North Carolina	\$4,856,536
Ohio	\$674,214
Pennsylvania	\$1,230,500
Rhode Island	\$0
South Carolina	\$1,212,059
Tennessee	\$2,654,129
Vermont	\$1,161,521
Virginia	\$5,871,144
West Virginia	\$3,463,622
Wisconsin	\$4,062,557
Total:	\$70,399,244

GEOSPATIAL SERVICES, CADASTRAL SURVEY, AND LANDS AND REALTY



RootsTech 2020 in Salt Lake City, Utah, photo by BLM

CADASTRAL SURVEY/ LANDS AND REALTY

BLM-ES functions as the nation's official surveyors – identifying, surveying and maintaining legal boundaries of federal lands in the eastern United States. We house the largest land title records collection in the world, including more than 9 million historic land title records dating back to 1787. In FY 2020, our cadastral survey team continued meeting its high bar of service for internal and external customers. Ongoing survey work in collaboration with the National Park Service continued from Michigan to the U.S. Virgin Islands. The team also provided support in creating land surveyor reports to ensure accuracy for oil and gas lease sales.



Cadastral Survey Program, photo by BLM

GEOGRAPHIC INFORMATION SYSTEMS

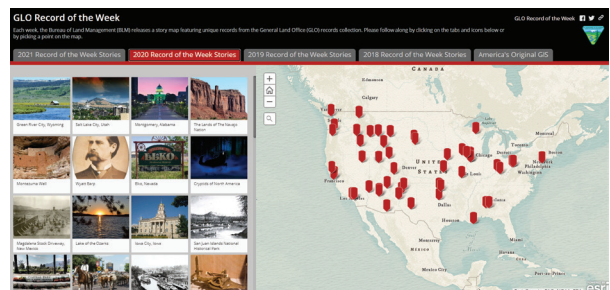
The BLM-ES Geographic Information Systems team entered ten backlogged surveys into the Public Land Survey System dataset, developed several web applications for data visualization, and developed a strategic roadmap for future GIS initiatives. The team also participated in an agency-wide effort to implement the Mineral and Lands Record System and GIS modernization.



Historic record of the House of Refuge in Florida, photo by BLM

GENERAL LAND OFFICE RECORDS

In FY 2020, the GLO Records Automation Team continued forging a path forward in highlighting their unique work on social media through an innovative "Record of the Week" series, which provided outreach to thousands of followers who are interested in GLO services. They were integral in adding more than 50 million records into the database that preceded the Mineral and Lands Records System.



GLO Record of the Week site, powered by ESRI

WILD HORSES AND BURROS



Placement Event in Lorton, Virginia, photo by BLM

PLACEMENT EVENTS AND ONLINE CORRAL

Despite placement event cancellations due to the COVID-19 pandemic, BLM-ES successfully placed 1,170 animals into private care. Since 2016, 15-20% more animals were put into private care annually while reducing costs from an average of \$2,053 to \$1,400 per placement. These successes are attributed to strategically select locations to accommodate and attract interested adopters, offering more animals on the Online Corral site, and leveraging partner support.

The Online Corral site is geared toward increasing the number of wild horses and burros placed into private care each year. In FY 2020, 2,480 adoption or purchase applications were submitted for review on the Online Corral – nearly 230,000 users accessed the website, proving to be an important national tool for internal program streamlining and external use.

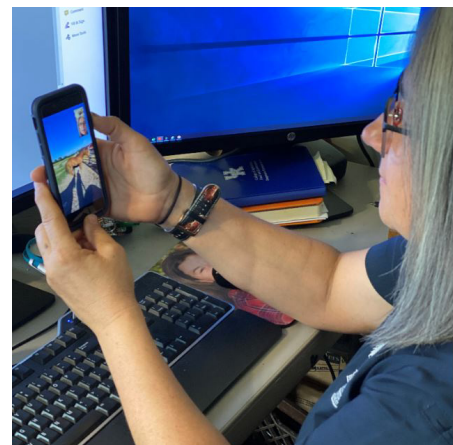
We worked in collaboration with the BLM National Operations Center in successfully negotiating the Ewing Off-Range Corral contract for five years, securing space for 300 animals. Corral space is critical to ensure animals are well rested prior to placement events and serves as a public interface, giving interested individuals and trainers the option to select animals in person.



Placement Event in Lorton, Virginia, photo by BLM

VIRTUAL COMPLIANCE

Virtual animal compliance inspections were launched in FY 2020 in lieu of in-person inspections due to the COVID-19 pandemic. This innovative practice allowed BLM-ES to connect with adopters in real-time to ensure open and regular communication.



Virtual Compliance Inspection, photo by BLM

Agency-wide,
accounts for over 30%
of animals placed
into private care.

1,272 animal
inspections were
completed.

Over 700
inspections
were completed
virtually.

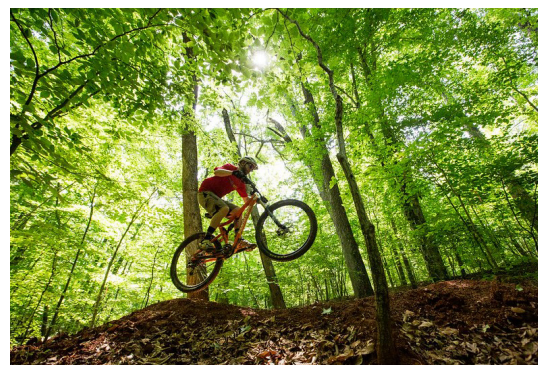
RECREATION AND OUTDOOR HERITAGE RESOURCES



Jupiter Inlet Lighthouse in Florida, photo by BLM

BLM-ES proudly manages and has jurisdiction over lands with premier recreation opportunities and outdoor heritage resources. In select areas, visitors can enjoy several outdoor activities including fishing, kayaking, mountain biking, hiking, equestrian use, hunting, and snowmobiling – in diverse backdrops that include sand beaches, lakes, hardwood forests and marshes.

Additionally, we manage portions of the Potomac Heritage National Scenic Trail, the Washington-Rochambeau Revolutionary Route National Historic Trail, the Star-Spangled Banner National Historic Trail, and the Captain John Smith Chesapeake National Historic Trail. We manage three developed recreational sites, one Special Recreation Management Area, the only 310-foot progressive bike ramp in the mid-Atlantic region, as well as multiple premier opportunities for fishing, kayaking, and hiking.



Bike Trail in Meadowood, photo by BLM

The Jupiter Inlet Lighthouse Outstanding National Area, a crown jewel of BLM's National Conservation Lands, is a 120-acre site that lies in south Florida's urbanized Treasure Coast in northern Palm Beach County, Florida. The ONA's featured attraction is the majestic Jupiter Inlet Lighthouse. The ONA is home to a remarkable array of natural and cultural resources including four sensitive habitats, 28 special status species, and an archaeological record providing evidence of human occupation dating back over 8,000 years. More than 100,000 people visited the ONA during FY 2020.

In FY 2020, the BLM Lower Potomac Field Station hosted an archery-only deer hunt in the Meadowood SRMA to assist with curbing the deer population in the Fairfax County, Virginia, area. Additionally, 13 acres were acquired to achieve public lands contiguity on the northeastern boundary of the SRMA to enhance public use and visitation and to improve recreation experiences and access to the Thompson Creek, Giles Run, South Ranch, and Enchanted Pond watersheds.



2020 Hunting Season, photo by BLM

WILDLAND FIRE



2020 Jackson Hotshots Fire Crew, photo by BLM

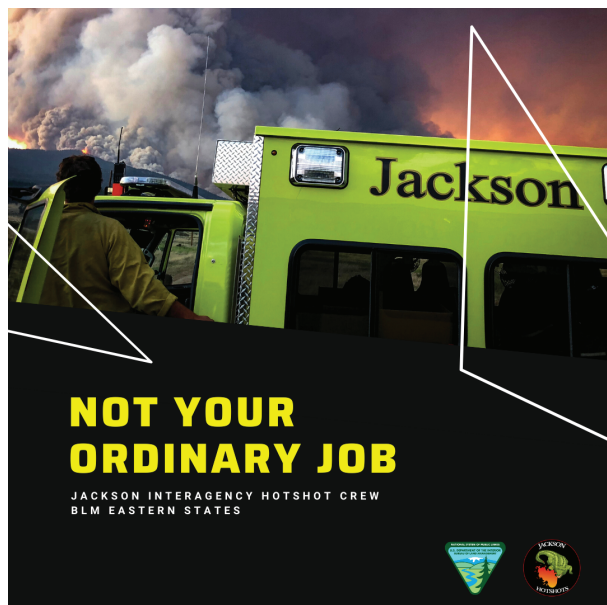
JACKSON HOTSHOTS FIRE CREW

BLM Hotshots are specialized, highly trained wildland firefighting teams skilled in combating fires. They are typically dispatched to the most challenging and dangerous areas of a wildland fire incident. The Jackson Hotshots are a unique team in BLM's Fire and Aviation Program as the only hotshot crew east of the Mississippi River.

Since 1997, the team has responded to incidents from Florida to Alaska and assisted in first responder efforts for natural disasters throughout the Southeast. During the significant 2020 fire season, they responded to 13 incidents in four states – Florida, New Mexico, Arizona, and Colorado. The team also provided expert support for prescribed fire operations on over 500 acres of BLM-managed lands in Florida and over 10,000 acres of USFS-managed lands in Mississippi.



Prescribed Burn at Lathrop Bayou, photo by BLM



Season Two Graphic, photo by BLM

"NOT YOUR ORDINARY JOB" PODCAST

The BLM-ES Office of Communications launched the popular "Not Your Ordinary Job" podcast to highlight the Jackson Hotshots, their efforts, and also as a means for recruitment. Each episode features different crew members, their diverse backgrounds, as well as the unique perspectives they bring to the table regarding firefighting and fire management.

The podcast has received national recognition, with support from the Department of the Interior, BLM Headquarters, and the National Interagency Fire Center. Plans are underway to produce podcasts with Spanish translations, further promoting a platform the Jackson Hotshots stands on – providing a means for underrepresented populations an avenue in federal service while maintaining high safety and professionalism.

ENERGY AND MINERALS



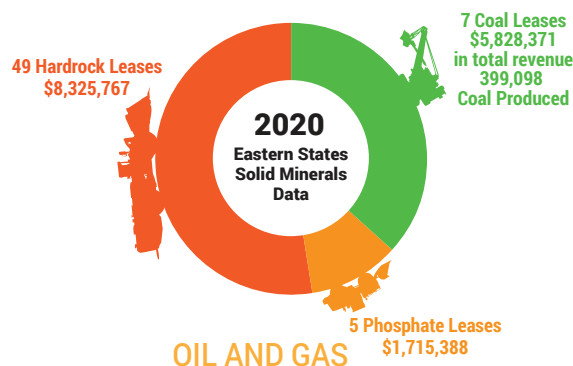
Doe Run Mine, photo by BLM

LEASABLE MINERALS (ENERGY)

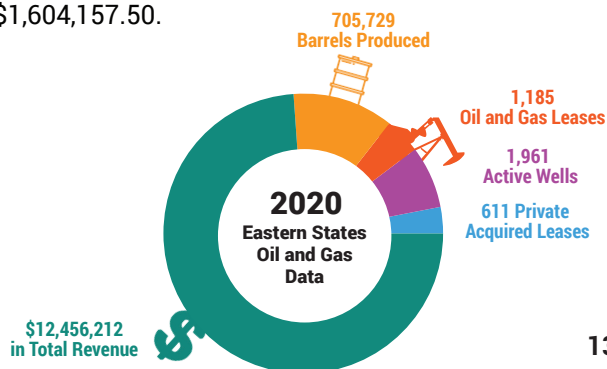
The BLM-ES office administers seven coal leases across 12,893 acres in West Virginia, Alabama, Illinois, and Kentucky. There is one producing coal mine in Alabama, three in Kentucky, and one idle mine in West Virginia. There are five pending lease-by-applications encompassing 21,734 acres and one pending exploration license. In the latter portion of FY 2019, one competitive coal lease sale was held for federal tracts in Morgan and Perry Counties, Ohio, across 432.44 acres with 1.4 million tons of recoverable coal – no bids were received. In FY 2020, BLM-ES received the final bonus bid payment totaling \$155,000 for a coal lease in West Virginia.

LEASABLE MINERALS (NON-ENERGY)

Regarding non-energy leasable minerals, the BLM-ES office administered 49 hard rock leases across 41,777 acres, which generated \$8,325,767 in total revenue. We administered five phosphate leases across 983 acres, which generated \$1,091,343 in total revenue. Additionally, we manage 20 mining claims in Florida and Arkansas. In September 2020, BLM received three lease modification proposals on the Mark Twain National Forest, which would add approximately 1,500 acres to current underground mining operations for copper, zinc, and other minerals. The total economic output from non-energy minerals was in the order of \$705 million. In total, solid minerals royalty revenue totaled approximately \$14 million, with the majority coming from copper, lead, and zinc mining in Missouri.



The BLM-ES Energy and Minerals program accounts for 14% of oil and gas production in the eastern United States. For most federal oil and gas leases, 49% of the revenue generated is received by the states where the leases are issued, with the rest going to the Federal Treasury. The federal government receives a royalty of 12.5% of the value of production. The lion's share of our revenue comes from oil and gas, which totaled over \$21 million in 2020, with the largest contributions coming from subsurface federal mineral estate in Arkansas, Mississippi, and Louisiana. In FY 2020, BLM-ES held three online competitive lease sales. The June 2020 competitive lease sale was deferred. 54 leases were issued totaling approximately 9.9 million acres, netting \$1,604,157.50.





BLM EASTERN STATES OFFICES

Eastern States State Office
5275 Leesburg Pike
Falls Church, VA 22041
703-558-7754



Northeastern States District Office
626 Wisconsin Ave., Suite 200
Milwaukee, WI 53202
414-297-4000



Southeastern States District Office
273 Market Street
Flowood, MS 39232
601-919-4650

