

Attachment

Bureau of Land Management John D. Dingell, Jr. Conservation, Management, and Recreation Act Section 4105 – 2020 Priority Access List

Table 1. Summary of BLM Priority Access List Parcels and Acreages by BLM State Office

State Office	Parcels on Priority Access List	BLM Nominated Parcels	Public Nominated Parcels	Legally Inaccessible Acres	Significantly Restricted Acres
AZ	66	21	45	107,643	329,652
CA	12	12	0	8,783	158,576
CO	126	117	9	88,016	449,723
ID	130	126	4	328,821	275,170
MT/DK	108	83	25	294,906	216,203
NM	80	56	24	215,687	233,393
NV	7	1	6	73,357	27,449
OR/WA	47	31	16	83,610	59,773
UT	3	0	3	795	4,023
WY	133	45	88	290,241	306,195
Totals	712	492	220	1,491,859	2,060,157

The parcels shown in Table 1 can be viewed by visiting the BLM's priority access list interactive web-map application located at <https://www.blm.gov/DingellActPriorityAccessMap>. Future web-based tools will improve the Bureau's ability to share current public lands access information with the public, cooperating agencies, stakeholders, conservation partners, and others and will streamline the process for soliciting future priority access parcel nominations.

Arizona State Office Priority Access List Parcel Locations

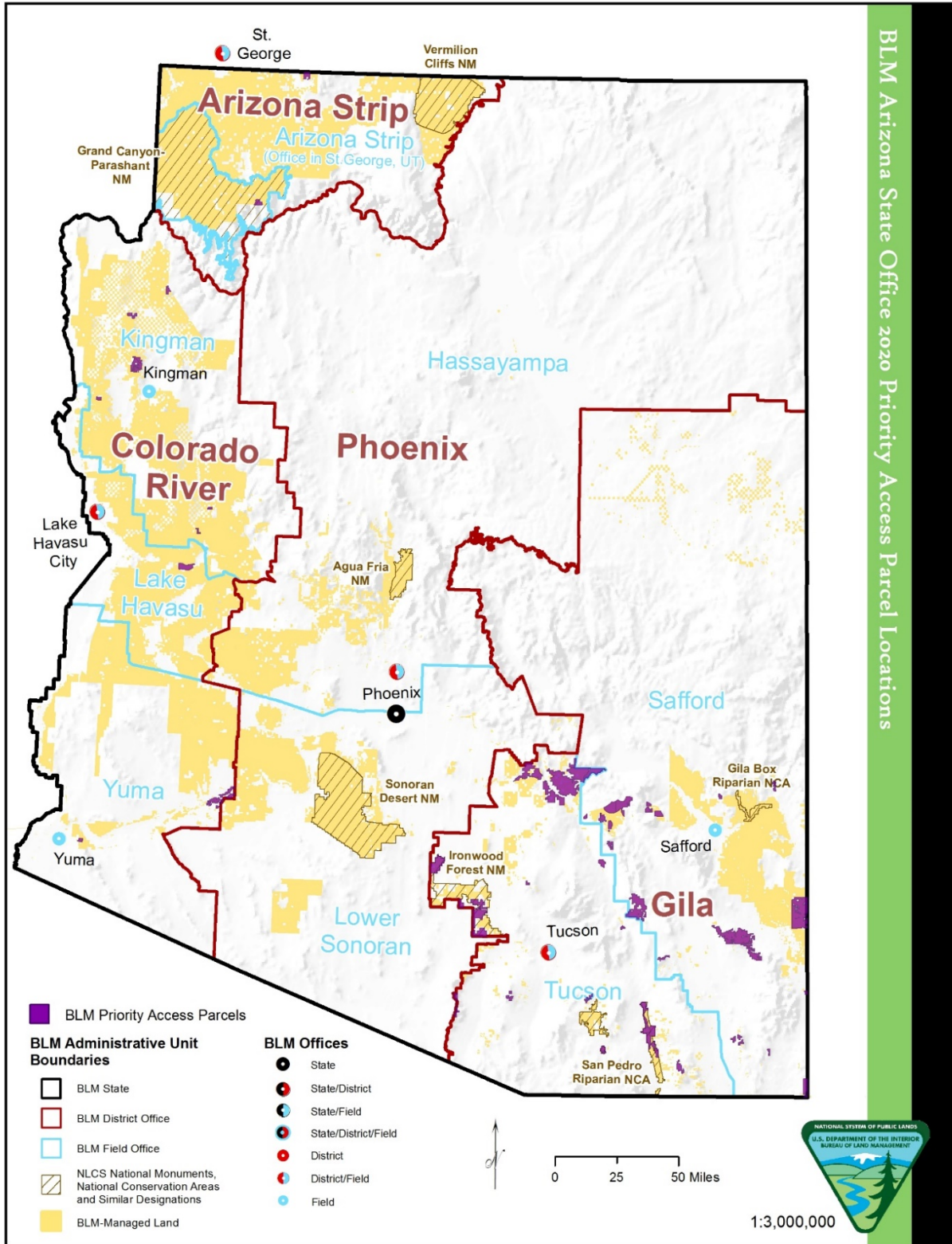


Table A. Arizona State Office Priority Access List Parcels by District and Field Office

District Office	Field Office	Parcel Area Name	# Acres Legally Inaccessible	# Acres Significantly Restricted	Potential Access Remedy	State Priority Ranking
Arizona Strip	Arizona Strip	Cottonwood Point Wilderness Access	3,848	0	Easement or ROW Acquisition	High
Arizona Strip	Grand Canyon-Parashant NM	Bar 10 Ranch 1045 Road	3,183	0	Other	High
Colorado River	Kingman	Big Sandy	0	1,045	Fee Acquisition	High
Colorado River	Kingman	Burro Creek	0	907	Fee Acquisition	High
Colorado River	Kingman	Canyon Station (Southern Cerbat Mtns)	2,195	0	Easement or ROW Acquisition	Medium
Colorado River	Kingman	Jordan Ranch Area	0	1,987	Easement or ROW Acquisition	Medium
Colorado River	Kingman	Music Mountain	2,254	0	Easement or ROW Acquisition	High
Colorado River	Kingman	North Mount Tipton	0	2,546	Fee/Easement	Medium
Colorado River	Kingman	Secret Pass	1,320	0	Fee/Easement	Medium
Colorado River	Lake Havasu	Rawhide Mountains from Lincoln Ranch Road	0	7,948	Fee/Easement	Medium
Colorado River	Yuma	Sears Point ACEC	0	13,767	Fee Acquisition	Low

Attachment – 2020 BLM Dingell Act Priority Access List

District Office	Field Office	Parcel Area Name	# Acres Legally Inaccessible	# Acres Significantly Restricted	Potential Access Remedy	State Priority Ranking
Colorado River	Yuma	Telegraph Pass	1,372	0	Fee Acquisition	High
Gila	Safford	Aravaipa Wilderness South	0	2,892	Fee Acquisition	Low
Gila	Safford	Aravaipa Wilderness West	0	2,892	Fee Acquisition	Low
Gila	Safford	Baker Canyon	0	7,562	Fee Acquisition	Low
Gila	Safford	Bowie Mountain	6,905	0	Fee Acquisition	Low
Gila	Safford	Bryce Mountain	0	1,160	Fee Acquisition	Low
Gila	Safford	Dos Cabezas	0	40,119	Fee Acquisition	Low
Gila	Safford	Dragoon	0	1,876	Fee Acquisition	Low
Gila	Safford	Dudleyville	0	1,195	Fee Acquisition	Low
Gila	Safford	El Capitan	2,564	0	Easement or ROW Acquisition	Low
Gila	Safford	Fort Bowie	0	4,970	Fee Acquisition	Low
Gila	Safford	Jackson Mountain East	0	4,000	Fee Acquisition	Low
Gila	Safford	Jackson Mountain North	1,497	0	Fee Acquisition	Low
Gila	Safford	Jackson Mountain South	0	2,607	Fee Acquisition	Low
Gila	Safford	N. Aravaipa	10,039	0	Fee Acquisition	High

Attachment – 2020 BLM Dingell Act Priority Access List

District Office	Field Office	Parcel Area Name	# Acres Legally Inaccessible	# Acres Significantly Restricted	Potential Access Remedy	State Priority Ranking
Gila	Safford	North Clifton	0	1,153	Fee Acquisition	Low
Gila	Safford	NW Aravaipa/Cross F	25,213	0	Fee Acquisition	High
Gila	Safford	Pedregosa Mountains East	0	882	Fee Acquisition	Low
Gila	Safford	Peloncillo Mountains	0	44,567	Fee Acquisition	High
Gila	Safford	Portal NE	0	872	Fee Acquisition	Low
Gila	Safford	Redfield Canyon	0	27,569	Fee Acquisition	Low
Gila	Safford	Rhodes Peak	2,722	0	Fee Acquisition	Low
Gila	Safford	South Clifton	0	935	Fee Acquisition	Low
Gila	Safford	Swisshelm Mountain	2,676	0	Fee Acquisition	Low
Gila	Safford	Swisshelm Mountain East	0	1,354	Fee Acquisition	Low
Gila	Tucson	Babocomari	0	3,940	Easement or ROW Acquisition	High
Gila	Tucson	Baboquivari Pk	0	2,063	Easement or ROW Acquisition	Low
Gila	Tucson	Big Hill	0	5,388	Easement or ROW Acquisition	Low
Gila	Tucson	Boquillas West	0	3,383	Easement or ROW Acquisition	High

Attachment – 2020 BLM Dingell Act Priority Access List

District Office	Field Office	Parcel Area Name	# Acres Legally Inaccessible	# Acres Significantly Restricted	Potential Access Remedy	State Priority Ranking
Gila	Tucson	Brunckow Hills	0	1,792	Easement or ROW Acquisition	High
Gila	Tucson	Charleston Hills	0	5,237	Easement or ROW Acquisition	High
Gila	Tucson	Cochie Canyon	0	921	Easement or ROW Acquisition	Low
Gila	Tucson	Cocio Wash	0	7,623	Easement or ROW Acquisition	High
Gila	Tucson	Dripping Springs	0	39,677	Easement or ROW Acquisition	High
Gila	Tucson	Empire Mtn 1	0	2,116	Fee Acquisition	High
Gila	Tucson	Gavin Ranch	835	0	Easement or ROW Acquisition	Low
Gila	Tucson	Granite Mtn	0	6,544	Easement or ROW Acquisition	Low
Gila	Tucson	Hackberry Wash	0	12,493	Easement or ROW Acquisition	Low
Gila	Tucson	Hot Well	0	3,507	Easement or ROW Acquisition	Low
Gila	Tucson	Juniper Flats	0	714	Easement or ROW Acquisition	Low
Gila	Tucson	Lewis Springs	0	2,581	Easement or ROW Acquisition	High

Attachment – 2020 BLM Dingell Act Priority Access List

District Office	Field Office	Parcel Area Name	# Acres Legally Inaccessible	# Acres Significantly Restricted	Potential Access Remedy	State Priority Ranking
Gila	Tucson	Little Ranch	0	3,544	Easement or ROW Acquisition	High
Gila	Tucson	Mescal Mountains	0	18,688	Fee Acquisition	High
Gila	Tucson	Mule Mtns	0	2,749	Easement or ROW Acquisition	Low
Gila	Tucson	Needle's Eye	0	9,303	Fee Acquisition	Low
Gila	Tucson	Redondo Wash	2,224	0	Easement or ROW Acquisition	Low
Gila	Tucson	Research Ranch	0	2,810	Fee Acquisition	Low
Gila	Tucson	Roskruge Mtns	0	8,161	Easement or ROW Acquisition	Low
Gila	Tucson	Samaniego Pk	0	649	Easement or ROW Acquisition	Low
Gila	Tucson	Sawtooth Mountains	15,160	0	Easement or ROW Acquisition	High
Gila	Tucson	Sierrita Mtn	0	1,870	Easement or ROW Acquisition	Low
Gila	Tucson	St David Cienega	0	3,580	Easement or ROW Acquisition	High
Gila	Tucson	Walnut Gulch	0	5,514	Easement or ROW Acquisition	High

Attachment – 2020 BLM Dingell Act Priority Access List

District Office	Field Office	Parcel Area Name	# Acres Legally Inaccessible	# Acres Significantly Restricted	Potential Access Remedy	State Priority Ranking
Gila	Tucson	Waterman Mtns	12,091	0	Easement or ROW Acquisition	High
Gila	Tucson	White Canyon	11,545	0	Fee Acquisition	High
<i>Grand Totals</i>			107,643	329,652		

California State Office Priority Access List Parcel Locations



Table B. California State Office Priority Access List Parcels by District and Field Office

District Office	Field Office	Parcel Area Name	# Acres Legally Inaccessible	# Acres Significantly Restricted	Potential Access Remedy	State Priority Ranking
California Desert	Needles	Ivanpah Dry Lake East	0	4,181	Easement or ROW Acquisition	High
Central California	Bakersfield	Temblors Rec Management Area	0	25,843	Easement or ROW Acquisition	Medium
Central California	Bishop	Dry Lakes Plateau	0	8,930	Fee Acquisition	High
Central California	Bishop	Granite Mountain Wilderness	0	38,226	Fee Acquisition	Medium
Central California	Central Coast	Sierra De Salinas - a	3,477	0	Easement or ROW Acquisition	Low
Central California	Central Coast	Sierra De Salinas - b	5,306	0	Easement or ROW Acquisition	Low
Central California	Ukiah	Berryessa Peak	0	9,071	Easement or ROW Acquisition	Medium
Central California	Ukiah	Cache Creek South	0	22,411	Fee Acquisition	Low
Central California	Ukiah	Cache Creek Wilderness West	0	19,066	Fee Acquisition	Low
Central California	Ukiah	North Cow Mountain	0	17,183	Fee Acquisition	Medium
Northern California	Arcata	Elkhorn Ridge	0	11,583	Easement or ROW Acquisition	High
Northern California	Eagle Lake	Wagner Canyon	0	2,082	Fee Acquisition	Medium
Grand Totals			8,783	158,576		

Colorado State Office Priority Access List Parcel Locations

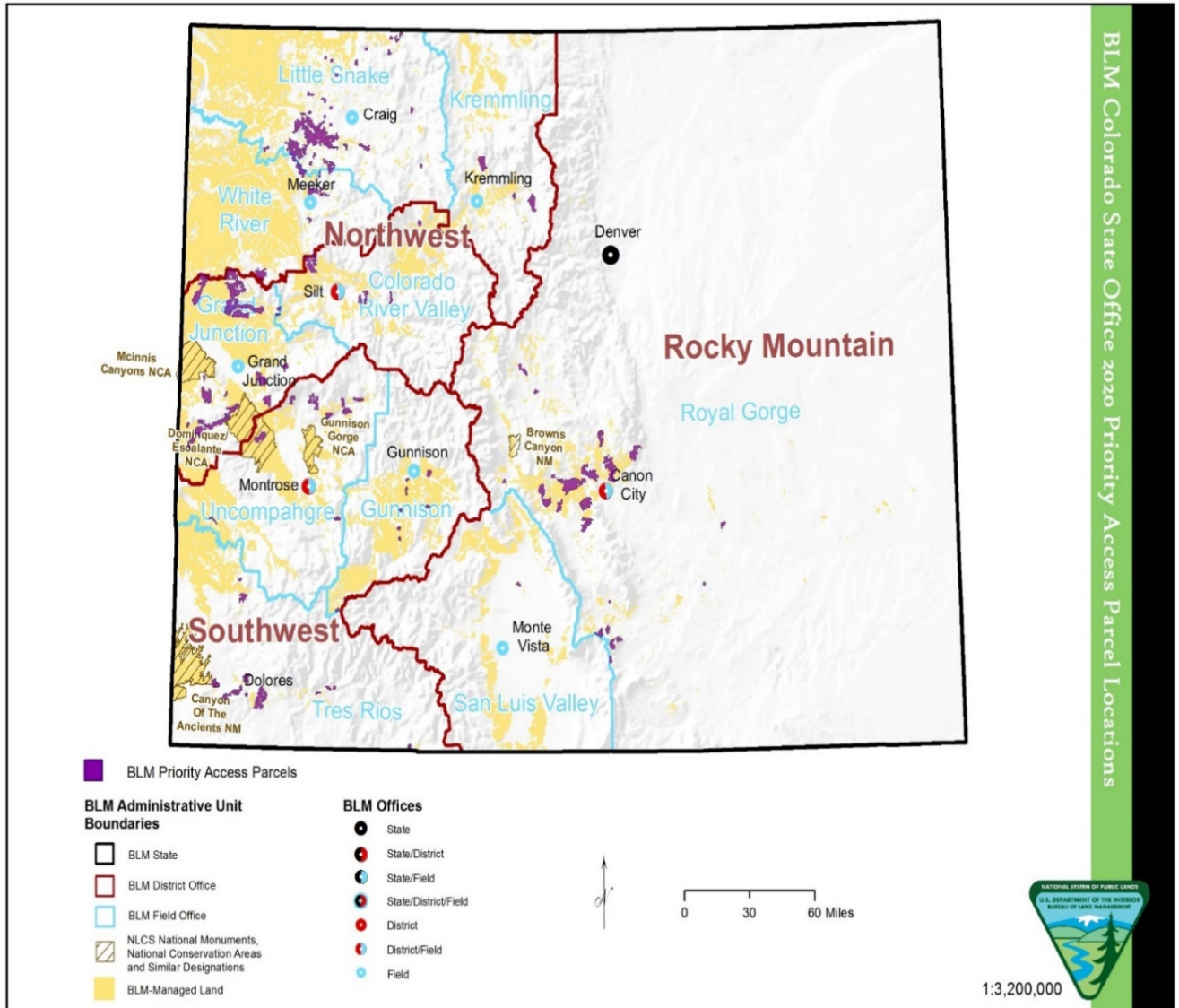


Table C. Colorado State Office Priority Access List Parcels by District and Field Office

District Office	Field Office	Parcel Area Name	# Acres Legally Inaccessible	# Acres Significantly Restricted	Potential Access Remedy	State Priority Ranking
Northwest	Kremmling	Granby Parcel	1,338	0	Easement or ROW Acquisition	Medium
Northwest	Kremmling	Strawberry SRMA	0	7,862	Easement or ROW Acquisition	High
Northwest	Kremmling	Troublesome WSA	0	8,567	Easement or ROW Acquisition	High
Northwest	Little Snake	Badger Creek	1,024	0	Easement or ROW Acquisition	Low
Northwest	Little Snake	Beaver Mountain	744	0	Easement or ROW Acquisition	Low
Northwest	Little Snake	Collom Gulch	928	0	Easement or ROW Acquisition	Medium
Northwest	Little Snake	Columbus Mountain	1,113	0	Easement or ROW Acquisition	Low
Northwest	Little Snake	Danforth Hills	17,651	0	Easement or ROW Acquisition	Medium
Northwest	Little Snake	Daton Peak / Deakin Gulch	0	3,723	Easement or ROW Acquisition	High
Northwest	Little Snake	Dry Gulch	641	0	Easement or ROW Acquisition	Low

Attachment – 2020 BLM Dingell Act Priority Access List

District Office	Field Office	Parcel Area Name	# Acres Legally Inaccessible	# Acres Significantly Restricted	Potential Access Remedy	State Priority Ranking
Northwest	Little Snake	Dry Gulch/West Timberlake	640	0	Easement or ROW Acquisition	Low
Northwest	Little Snake	Eastern Half of Little Yampa Canyon Special Recreation Area	0	65,447	Easement or ROW Acquisition	High
Northwest	Little Snake	Elk Mountain/Sleeping Giant	1,270	0	Easement or ROW Acquisition	Medium
Northwest	Little Snake	Lay Creek/East of Maybell	776	0	Easement or ROW Acquisition	Medium
Northwest	Little Snake	Little Collom Gulch	838	0	Easement or ROW Acquisition	Medium
Northwest	Little Snake	Little Emerson Peak Area	706	0	Easement or ROW Acquisition	High
Northwest	Little Snake	Martin Cull Reservoir	1,262	0	Easement or ROW Acquisition	Low
Northwest	Little Snake	Milk Creek/Wood Gulch	1,281	0	Easement or ROW Acquisition	Medium
Northwest	Little Snake	Mud Springs Area	1,082	0	Easement or ROW Acquisition	Low
Northwest	Little Snake	North Fork Gig Gulch	1,318	0	Easement or ROW Acquisition	Low
Northwest	Little Snake	North Fork Sagebrush Creek	1,335	0	Easement or ROW Acquisition	Low

Attachment – 2020 BLM Dingell Act Priority Access List

District Office	Field Office	Parcel Area Name	# Acres Legally Inaccessible	# Acres Significantly Restricted	Potential Access Remedy	State Priority Ranking
Northwest	Little Snake	Old Baldy Area	6,425	0	Easement or ROW Acquisition	Medium
Northwest	Little Snake	Piney Mountain	1,340	0	Easement or ROW Acquisition	Low
Northwest	Little Snake	Sand Springs Gulch Area	643	0	Easement or ROW Acquisition	Low
Northwest	Little Snake	Sand Springs Gulch Area/North Highway 40	640	0	Easement or ROW Acquisition	Low
Northwest	Little Snake	South Big Gulch/Sand Springs	641	0	Easement or ROW Acquisition	Low
Northwest	Little Snake	South Stagecoach Reservoir	735	0	Easement or ROW Acquisition	Low
Northwest	Little Snake	Straight Gulch	880	0	Easement or ROW Acquisition	Low
Northwest	Little Snake	Sugarloaf Peak Area/East Maybell	799	0	Easement or ROW Acquisition	Low
Northwest	Little Snake	Thornburgh Mountain	3,813	0	Easement or ROW Acquisition	High
Northwest	Little Snake	Thornburgh Mountain	5,235	0	Easement or ROW Acquisition	High
Northwest	Little Snake	Three Forks Mountain	1,001	0	Easement or ROW Acquisition	Low

Attachment – 2020 BLM Dingell Act Priority Access List

District Office	Field Office	Parcel Area Name	# Acres Legally Inaccessible	# Acres Significantly Restricted	Potential Access Remedy	State Priority Ranking
Northwest	Little Snake	Timberlake Creek Area	800	0	Easement or ROW Acquisition	Low
Northwest	White River	Archers Draw	0	800	Other	Low
Northwest	White River	Coal Creek	0	793	Other	Low
Northwest	White River	Curtis Creek	0	854	Other	Low
Northwest	White River	James Creek	0	742	Other	Low
Northwest	White River	Puddin	0	8,081	Other	Medium
Northwest	White River	Rattlesnake Mesa	0	920	Other	Low
Northwest	White River	Red Canyon	0	1,113	Other	Low
Northwest	White River	Ryan Gulch	0	3,559	Other	Low
Northwest	White River	Ryan Gulch Area	0	3,553	Easement or ROW Acquisition	Medium
Rocky Mountain	Royal Gorge	Barnard Creek / Rattlesnake Gulch	0	5,624	Fee Acquisition	Medium
Rocky Mountain	Royal Gorge	Big Hole	0	24,192	Fee Acquisition	High
Rocky Mountain	Royal Gorge	Cleveland Mtn.	0	1,043	Fee Acquisition	Low
Rocky Mountain	Royal Gorge	Cooper Mtn.	0	17,113	Fee Acquisition	High
Rocky Mountain	Royal Gorge	Garo	3,324	0	Easement or ROW Acquisition	Medium
Rocky Mountain	Royal Gorge	Green Mountain	1,177	0	Fee Acquisition	Medium

Attachment – 2020 BLM Dingell Act Priority Access List

District Office	Field Office	Parcel Area Name	# Acres Legally Inaccessible	# Acres Significantly Restricted	Potential Access Remedy	State Priority Ranking
Rocky Mountain	Royal Gorge	Hot Springs	1,178	0	Other	Medium
Rocky Mountain	Royal Gorge	Iron Mountain	3,125	0	Fee Acquisition	Medium
Rocky Mountain	Royal Gorge	Kramer Creek	2,044	0	Easement or ROW Acquisition	Low
Rocky Mountain	Royal Gorge	Lower Grape Creek / Goat Park	0	10,213	Fee Acquisition	High
Rocky Mountain	Royal Gorge	Middle Creek	1,403	0	Fee Acquisition	Medium
Rocky Mountain	Royal Gorge	Mount Maestas	0	3,750	Easement or ROW Acquisition	Medium
Rocky Mountain	Royal Gorge	Mt. Mestas	0	3,750	Fee Acquisition	Medium
Rocky Mountain	Royal Gorge	North Coaldale	0	12,417	Fee Acquisition	Medium
Rocky Mountain	Royal Gorge	North Gardner	651	0	Fee Acquisition	Low
Rocky Mountain	Royal Gorge	Race Path	0	4,128	Fee Acquisition	Medium
Rocky Mountain	Royal Gorge	Sheep Mountain	2,247	0	Fee Acquisition	Medium
Rocky Mountain	Royal Gorge	Silver Mountain	1,982	0	Fee Acquisition	Medium
Rocky Mountain	Royal Gorge	South Pueblo	641	0	Easement or ROW Acquisition	Low
Rocky Mountain	Royal Gorge	Turkey Creek	0	8,497	Fee Acquisition	Medium

Attachment – 2020 BLM Dingell Act Priority Access List

District Office	Field Office	Parcel Area Name	# Acres Legally Inaccessible	# Acres Significantly Restricted	Potential Access Remedy	State Priority Ranking
Rocky Mountain	Royal Gorge	Twin Mtn.	0	13,206	Fee Acquisition	High
Rocky Mountain	Royal Gorge	Upper Grape Creek	0	8,356	Fee Acquisition	Medium
Rocky Mountain	San Luis Valley	Mishak Lakes	0	1,759	Other	High
Southwest	Gunnison	Aberdeen/Enchanted Forest Connector Routes	0	859	Easement or ROW Acquisition	High
Southwest	Gunnison	Bead Creek	0	982	Fee Acquisition	High
Southwest	Gunnison	Cabin Creek/Dry Gulch	0	2,837	Easement or ROW Acquisition	Medium
Southwest	Gunnison	Dry Gulch Access - Road Beaver	0	700	Easement or ROW Acquisition	Medium
Southwest	Gunnison	Hartman Rocks SRMA Access Route	0	681	Easement or ROW Acquisition	Medium
Southwest	Gunnison	Highland Mary and Spencer Basin Trails	0	958	Fee Acquisition	High
Southwest	Gunnison	Minnie Gulch Trail	0	751	Fee Acquisition	High
Southwest	Gunnison	Northwest Access - Road Beaver	0	963	Easement or ROW Acquisition	Low
Southwest	Gunnison	Willow Creek Area	776	0	Easement or ROW Acquisition	Medium
Southwest	Tres Rios	Cottonwood Canyon	7,181	0	Other	High

Attachment – 2020 BLM Dingell Act Priority Access List

District Office	Field Office	Parcel Area Name	# Acres Legally Inaccessible	# Acres Significantly Restricted	Potential Access Remedy	State Priority Ranking
Southwest	Tres Rios	Durango East	0	796	Other	Low
Southwest	Tres Rios	East McKenna Peak Area	0	655	Other	Low
Southwest	Tres Rios	East Mesa Verde Escarpment	0	656	Other	Low
Southwest	Tres Rios	Menefee Mountain WSA	0	8,802	Other	High
Southwest	Tres Rios	Mesa Verde Escarpment, East	0	4,701	Other	Medium
Southwest	Tres Rios	Mesa Verde Escarpment, West	0	2,719	Other	Low
Southwest	Tres Rios	Middle South Mountain Parcel	0	4,477	Other	Low
Southwest	Tres Rios	Price Ranch / Alkali Canyon	0	4,268	Other	Low
Southwest	Tres Rios	Spring Gulch East	0	759	Other	Low
Southwest	Tres Rios	Spring Gulch West	0	1,153	Other	Low
Southwest	Tres Rios	Summit Parcel	0	2,835	Other	Low
Southwest	Tres Rios	Vigil Abeyeta West	0	722	Other	Low
Southwest	Uncompahgre	Cimmaron/High Park	0	1,745	Easement or ROW Acquisition	Low
Southwest	Uncompahgre	Dirty George Creek	0	2,460	Easement or ROW Acquisition	Medium

Attachment – 2020 BLM Dingell Act Priority Access List

District Office	Field Office	Parcel Area Name	# Acres Legally Inaccessible	# Acres Significantly Restricted	Potential Access Remedy	State Priority Ranking
Southwest	Uncompahgre	Jumbo Mountain	0	4,642	Easement or ROW Acquisition	High
Southwest	Uncompahgre	North Fork	0	2,717	Easement or ROW Acquisition	Low
Southwest	Uncompahgre	Oak Mesa	0	2,918	Easement or ROW Acquisition	Low
Southwest	Uncompahgre	Paradox	0	1,078	Easement or ROW Acquisition	High
Southwest	Uncompahgre	Redlands Mesa	0	7,309	Easement or ROW Acquisition	Medium
Southwest	Uncompahgre	Terror Creek	0	2,258	Easement or ROW Acquisition	Low
Upper Colorado River	Colorado River Valley	Consolidated Reservoir	0	2,017	Conservation Easement w/ Access	High
Upper Colorado River	Colorado River Valley	Harris Gulch	0	3,877	Conservation Easement w/ Access	High
Upper Colorado River	Colorado River Valley	South Canyon - a	0	2,032	Conservation Easement w/ Access	High
Upper Colorado River	Colorado River Valley	South Canyon - b	0	3,533	Conservation Easement w/ Access	High
Upper Colorado River	Colorado River Valley	Sunnyside Creek	0	1,420	Easement or ROW Acquisition	Medium

Attachment – 2020 BLM Dingell Act Priority Access List

District Office	Field Office	Parcel Area Name	# Acres Legally Inaccessible	# Acres Significantly Restricted	Potential Access Remedy	State Priority Ranking
Upper Colorado River	Colorado River Valley	Upper Grand Hogback	0	7,641	Conservation Easement w/ Access	High
Upper Colorado River	Grand Junction	Bangs Canyon Clarks Bench	0	831	Fee Acquisition	Medium
Upper Colorado River	Grand Junction	Bangs Canyon East Creek	0	6,268	Fee Acquisition	High
Upper Colorado River	Grand Junction	Bottle Rock	869	0	Easement or ROW Acquisition	Medium
Upper Colorado River	Grand Junction	Bull Draw	0	2,480	Easement or ROW Acquisition	Medium
Upper Colorado River	Grand Junction	Carr Creek	0	8,422	Easement or ROW Acquisition	Low
Upper Colorado River	Grand Junction	Cow Ridge	0	15,149	Easement or ROW Acquisition	Low
Upper Colorado River	Grand Junction	DENCA - Escalante	0	6,710	Fee Acquisition	Medium
Upper Colorado River	Grand Junction	Echo Lake	0	11,964	Easement or ROW Acquisition	Low
Upper Colorado River	Grand Junction	Henderson Ridge	0	11,432	Easement or ROW Acquisition	Low
Upper Colorado River	Grand Junction	Horse Mountain	0	5,173	Easement or ROW Acquisition	Low

Attachment – 2020 BLM Dingell Act Priority Access List

District Office	Field Office	Parcel Area Name	# Acres Legally Inaccessible	# Acres Significantly Restricted	Potential Access Remedy	State Priority Ranking
Upper Colorado River	Grand Junction	Larsen Canyon	0	878	Easement or ROW Acquisition	Medium
Upper Colorado River	Grand Junction	Mount Logan	0	760	Easement or ROW Acquisition	Medium
Upper Colorado River	Grand Junction	Mud Spring Canyon	0	6,313	Easement or ROW Acquisition	Medium
Upper Colorado River	Grand Junction	Pritchard Spring	1,278	0	Easement or ROW Acquisition	Medium
Upper Colorado River	Grand Junction	Sawmill Gulch	0	3,814	Easement or ROW Acquisition	Low
Upper Colorado River	Grand Junction	Sink Creek	0	8,481	Easement or ROW Acquisition	Medium
Upper Colorado River	Grand Junction	Snyder Creek	698	0	Easement or ROW Acquisition	Medium
Upper Colorado River	Grand Junction	South Canyon - c	0	17,019	Easement or ROW Acquisition	Low
Upper Colorado River	Grand Junction	South Grand Mesa Slopes	0	6,113	Easement or ROW Acquisition	Medium
Upper Colorado River	Grand Junction	The Breaks	2,543	0	Easement or ROW Acquisition	Medium
Upper Colorado River	Grand Junction	The Palisade Fish Creek	0	2,026	Easement or ROW Acquisition	Medium

Attachment – 2020 BLM Dingell Act Priority Access List

District Office	Field Office	Parcel Area Name	# Acres Legally Inaccessible	# Acres Significantly Restricted	Potential Access Remedy	State Priority Ranking
Upper Colorado River	Grand Junction	The Palisade North	0	960	Easement or ROW Acquisition	Medium
Upper Colorado River	Grand Junction	Timber Ridge	0	10,872	Easement or ROW Acquisition	Medium
Upper Colorado River	Grand Junction	Turner Gulch	0	6,003	Easement or ROW Acquisition	Medium
Upper Colorado River	Grand Junction	Unawweep Canyon	0	11,072	Fee Acquisition	Medium
<i>Grand Totals</i>			88,016	449,723		

Idaho State Office Priority Access List Parcel Locations

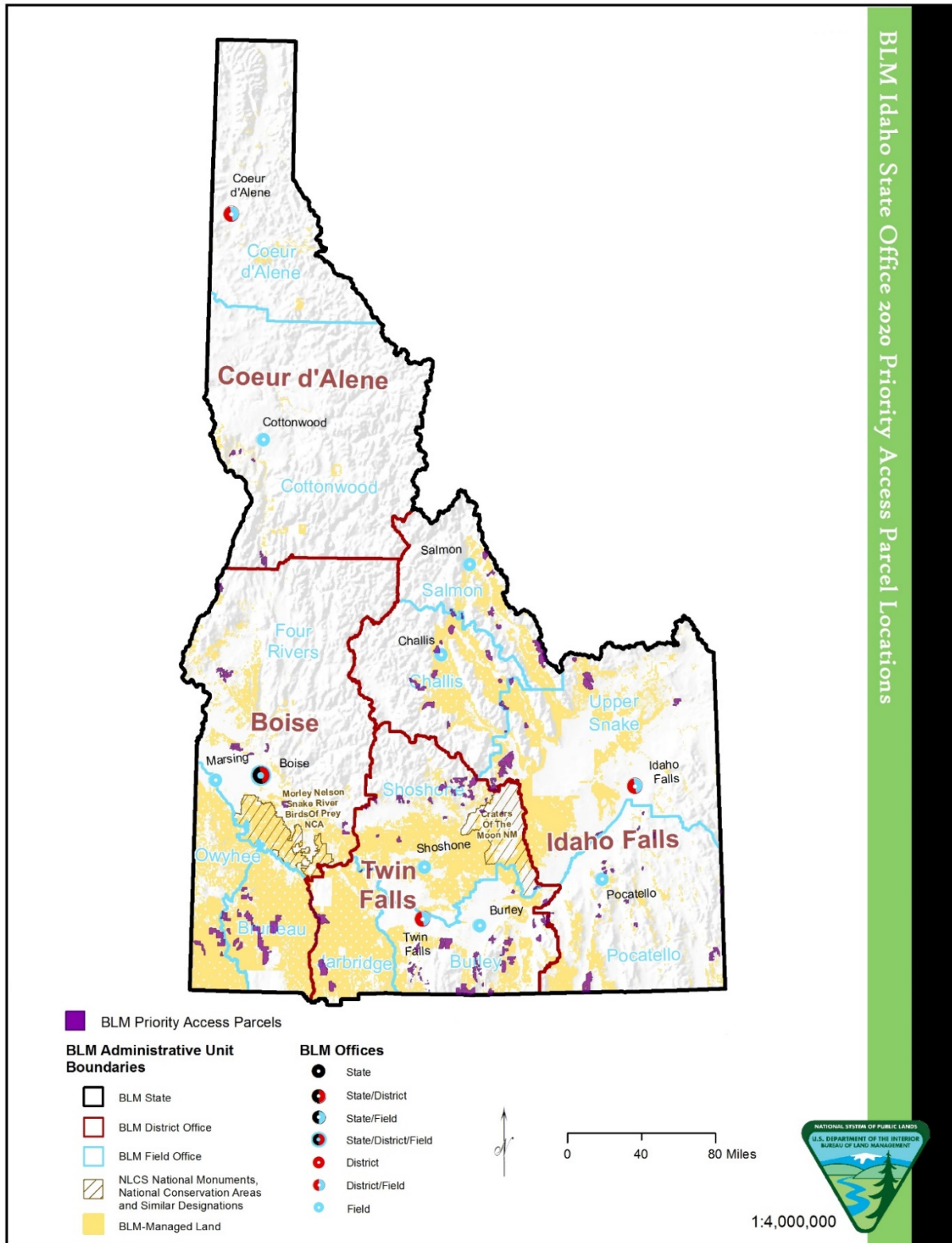


Table D. Idaho State Office Priority Access List Parcels by District and Field Office

District Office	Field Office	Parcel Area Name	# Acres Legally Inaccessible	# Acres Significantly Restricted	Potential Access Remedy	State Priority Ranking
Boise	Bruneau	Battle Creek Road	36,259	0	Easement or ROW Acquisition	Medium
Boise	Bruneau	Buncel Place	5,264	0	Easement or ROW Acquisition	Medium
Boise	Bruneau	Dickshooter Homestead	4,857	0	Easement or ROW Acquisition	High
Boise	Bruneau	Dry Creek - a	8,298	0	Easement or ROW Acquisition	Medium
Boise	Bruneau	Harvey Place	13,743	0	Easement or ROW Acquisition	Medium
Boise	Bruneau	Indian Crossing	2,448	0	Easement or ROW Acquisition	Medium
Boise	Bruneau	Little Jacks Creek Road	1,506	0	Easement or ROW Acquisition	High
Boise	Bruneau	Pixley Basin Road (East)	4,876	0	Easement or ROW Acquisition	Medium
Boise	Bruneau	Pixley Basin Road (West)	2,616	0	Easement or ROW Acquisition	High
Boise	Bruneau	SDR Ranch (East)	3,465	0	Easement or ROW Acquisition	High
Boise	Bruneau	SDR Ranch (West)	4,643	0	Easement or ROW Acquisition	High

Attachment – 2020 BLM Dingell Act Priority Access List

District Office	Field Office	Parcel Area Name	# Acres Legally Inaccessible	# Acres Significantly Restricted	Potential Access Remedy	State Priority Ranking
Boise	Bruneau	Squaw Meadows	4,334	0	Easement or ROW Acquisition	High
Boise	Bruneau	Yellow House	2,685	0	Easement or ROW Acquisition	High
Boise	Four Rivers	Avimor North	2,742	0	Easement or ROW Acquisition	High
Boise	Four Rivers	Curlew East	4,741	0	Fee Acquisition	Medium
Boise	Four Rivers	Goodale	6,149	0	Easement or ROW Acquisition	Low
Boise	Four Rivers	Highlands	1,638	0	Easement or ROW Acquisition	Low
Boise	Four Rivers	Indian Creek Reservoir	0	3,318	Conservation Easement w/ Access	High
Boise	Four Rivers	Long-billed Curlew ACEC	4,574	0	Easement or ROW Acquisition	Low
Boise	Four Rivers	Sheep Peak	3,520	0	Easement or ROW Acquisition	Low
Boise	Four Rivers	Sugarloaf	15,202	0	Easement or ROW Acquisition	Low
Boise	Owyhee	Bull Basin/Crutchers Crossing	7,427	0	Easement or ROW Acquisition	High
Boise	Owyhee	Rickard Cherry Stem	999	0	Easement or ROW Acquisition	Medium

Attachment – 2020 BLM Dingell Act Priority Access List

District Office	Field Office	Parcel Area Name	# Acres Legally Inaccessible	# Acres Significantly Restricted	Potential Access Remedy	State Priority Ranking
Boise	Owyhee	Star Ranch	14,741	0	Easement or ROW Acquisition	Medium
Boise	Owyhee	Wiseman Crossing	6,349	0	Easement or ROW Acquisition	Medium
Coeur d'Alene	Cottonwood	Bally Mountain	0	3,490	Easement or ROW Acquisition	Low
Coeur d'Alene	Cottonwood	Billy Creek	1,388	0	Easement or ROW Acquisition	Low
Coeur d'Alene	Cottonwood	Boulder South	0	2,483	Easement or ROW Acquisition	Low
Coeur d'Alene	Cottonwood	Little Salmon River	0	1,626	Easement or ROW Acquisition	Low
Coeur d'Alene	Cottonwood	Lower Salmon River	926	0	Easement or ROW Acquisition	Low
Coeur d'Alene	Cottonwood	Rattlesnake Ridge	2,874	0	Easement or ROW Acquisition	Low
Idaho Falls	Challis	Allison Creek	0	1,267	Easement or ROW Acquisition	High
Idaho Falls	Challis	Centennial Flat	0	5,593	Easement or ROW Acquisition	Low
Idaho Falls	Challis	Crows Nest	0	625	Easement or ROW Acquisition	Low

Attachment – 2020 BLM Dingell Act Priority Access List

District Office	Field Office	Parcel Area Name	# Acres Legally Inaccessible	# Acres Significantly Restricted	Potential Access Remedy	State Priority Ranking
Idaho Falls	Challis	Ellis Creek	0	6,916	Easement or ROW Acquisition	Medium
Idaho Falls	Challis	Hat Creek	0	3,500	Easement or ROW Acquisition	Medium
Idaho Falls	Challis	McDonald Creek	0	9,195	Easement or ROW Acquisition	High
Idaho Falls	Challis	Mill Creek	0	6,234	Other	High
Idaho Falls	Challis	Red Cliffs	0	5,512	Other	High
Idaho Falls	Challis	Stephens Gulch	0	1,229	Easement or ROW Acquisition	Low
Idaho Falls	Challis	Sullivan Creek	0	4,102	Easement or ROW Acquisition	Low
Idaho Falls	Challis	Summit Reservoir	0	2,032	Easement or ROW Acquisition	High
Idaho Falls	Challis	Thompson Creek - b	0	5,596	Easement or ROW Acquisition	Medium
Idaho Falls	Challis	Twin Bridges	0	1,572	Easement or ROW Acquisition	Low
Idaho Falls	Pocatello	Big Hill	0	9,055	Easement or ROW Acquisition	Medium
Idaho Falls	Pocatello	Bradley Mountain	0	1,832	Easement or ROW Acquisition	Low

Attachment – 2020 BLM Dingell Act Priority Access List

District Office	Field Office	Parcel Area Name	# Acres Legally Inaccessible	# Acres Significantly Restricted	Potential Access Remedy	State Priority Ranking
Idaho Falls	Pocatello	Camelback	1,398	0	Easement or ROW Acquisition	Low
Idaho Falls	Pocatello	Clifton Creek	1,039	0	Easement or ROW Acquisition	Low
Idaho Falls	Pocatello	Downey Watershed	1,852	0	Easement or ROW Acquisition	Medium
Idaho Falls	Pocatello	Hansel	0	21,433	Easement or ROW Acquisition	Low
Idaho Falls	Pocatello	Harkness	1,595	0	Easement or ROW Acquisition	Medium
Idaho Falls	Pocatello	Moonlight	1,385	0	Easement or ROW Acquisition	Low
Idaho Falls	Pocatello	Pioneer Ridge	0	1,131	Easement or ROW Acquisition	High
Idaho Falls	Pocatello	Table Mountain	738	0	Easement or ROW Acquisition	Low
Idaho Falls	Pocatello	Taylor Mountain	755	0	Easement or ROW Acquisition	Low
Idaho Falls	Pocatello	Two and a Half Mile	0	1,294	Easement or ROW Acquisition	Low
Idaho Falls	Salmon	Eighteenmile WSA	25,044	0	Other	Low
Idaho Falls	Salmon	Geertson Creek	5,874	0	Easement or ROW Acquisition	Low

Attachment – 2020 BLM Dingell Act Priority Access List

District Office	Field Office	Parcel Area Name	# Acres Legally Inaccessible	# Acres Significantly Restricted	Potential Access Remedy	State Priority Ranking
Idaho Falls	Salmon	Lee Creek	2,993	0	Easement or ROW Acquisition	Low
Idaho Falls	Salmon	Little Sawmill	5,006	0	Easement or ROW Acquisition	Low
Idaho Falls	Salmon	Sandy Creek	3,001	0	Easement or ROW Acquisition	Low
Idaho Falls	Upper Snake	Upper Snake 1	0	8,587	Easement or ROW Acquisition	High
Idaho Falls	Upper Snake	Upper Snake 2	0	9,699	Easement or ROW Acquisition	High
Idaho Falls	Upper Snake	Upper Snake 3	0	3,214	Easement or ROW Acquisition	Low
Idaho Falls	Upper Snake	Upper Snake 4	0	2,559	Easement or ROW Acquisition	Medium
Idaho Falls	Upper Snake	Upper Snake 5	0	5,091	Easement or ROW Acquisition	High
Idaho Falls	Upper Snake	Upper Snake 6	0	11,963	Easement or ROW Acquisition	Medium
Idaho Falls	Upper Snake	Upper Snake 7	0	3,994	Easement or ROW Acquisition	High
Idaho Falls	Upper Snake	Upper Snake 8	0	2,460	Easement or ROW Acquisition	Low

Attachment – 2020 BLM Dingell Act Priority Access List

District Office	Field Office	Parcel Area Name	# Acres Legally Inaccessible	# Acres Significantly Restricted	Potential Access Remedy	State Priority Ranking
Idaho Falls	Upper Snake	Upper Snake 9	0	2,689	Easement or ROW Acquisition	Medium
Idaho Falls	Upper Snake	Upper Snake 10	0	6,013	Easement or ROW Acquisition	High
Idaho Falls	Upper Snake	Upper Snake 11	0	2,070	Easement or ROW Acquisition	High
Idaho Falls	Upper Snake	Upper Snake 12	0	2,205	Easement or ROW Acquisition	Medium
Idaho Falls	Upper Snake	Upper Snake 13	0	6,569	Easement or ROW Acquisition	Medium
Idaho Falls	Upper Snake	Upper Snake 14	0	2,977	Easement or ROW Acquisition	Medium
Twin Falls	Burley	Amendment of Cold Springs Rd	10,178	0	Easement or ROW Acquisition	High
Twin Falls	Burley	Blacksmith Creek	0	1,058	Easement or ROW Acquisition	Medium
Twin Falls	Burley	Callahan/Manning	0	1,971	Easement or ROW Acquisition	Medium
Twin Falls	Burley	Cedar Fields (West Access)	3,637	0	Easement or ROW Acquisition	High
Twin Falls	Burley	Churchill Mathews	0	3,580	Easement or ROW Acquisition	Low

Attachment – 2020 BLM Dingell Act Priority Access List

District Office	Field Office	Parcel Area Name	# Acres Legally Inaccessible	# Acres Significantly Restricted	Potential Access Remedy	State Priority Ranking
Twin Falls	Burley	Coal Banks Access	0	9,843	Easement or ROW Acquisition	High
Twin Falls	Burley	Coe Creek	0	3,801	Easement or ROW Acquisition	Medium
Twin Falls	Burley	Conner Creek/Conner Ridge	0	3,455	Easement or ROW Acquisition	Low
Twin Falls	Burley	Cow Gulch	0	3,264	Easement or ROW Acquisition	Low
Twin Falls	Burley	Critchfield/Manning	0	1,582	Easement or ROW Acquisition	Medium
Twin Falls	Burley	Dairy Springs	0	7,585	Easement or ROW Acquisition	High
Twin Falls	Burley	Dry Creek - b	0	6,671	Easement or ROW Acquisition	Low
Twin Falls	Burley	East Minidoka-Rose	0	1,378	Easement or ROW Acquisition	Medium
Twin Falls	Burley	Franks Hollow	7,105	0	Easement or ROW Acquisition	High
Twin Falls	Burley	Immigrant Canyon	0	4,401	Easement or ROW Acquisition	High
Twin Falls	Burley	Kerr Lost Creek Allotment	721	0	Easement or ROW Acquisition	Low

Attachment – 2020 BLM Dingell Act Priority Access List

District Office	Field Office	Parcel Area Name	# Acres Legally Inaccessible	# Acres Significantly Restricted	Potential Access Remedy	State Priority Ranking
Twin Falls	Burley	Little Birch Creek/Granite Pass	10,384	0	Easement or ROW Acquisition	High
Twin Falls	Burley	Lunch Creek	0	3,651	Easement or ROW Acquisition	Low
Twin Falls	Burley	NatSooPah (Joe Access)	0	4,118	Easement or ROW Acquisition	High
Twin Falls	Burley	North Chapin	2,537	0	Easement or ROW Acquisition	Low
Twin Falls	Burley	North Jim Sage (Kincade Access)	0	6,751	Easement or ROW Acquisition	Medium
Twin Falls	Burley	Oakley Valley Stone	0	3,900	Easement or ROW Acquisition	Low
Twin Falls	Burley	Sand North	1,237	0	Easement or ROW Acquisition	Medium
Twin Falls	Burley	Shirfey/Birch Creek	1,570	0	Easement or ROW Acquisition	Medium
Twin Falls	Burley	Shirley Creek	0	3,663	Easement or ROW Acquisition	Low
Twin Falls	Burley	Shoshone Basin Area	0	7,893	Easement or ROW Acquisition	Low
Twin Falls	Burley	Trail Canyon	0	966	Easement or ROW Acquisition	Medium

Attachment – 2020 BLM Dingell Act Priority Access List

District Office	Field Office	Parcel Area Name	# Acres Legally Inaccessible	# Acres Significantly Restricted	Potential Access Remedy	State Priority Ranking
Twin Falls	Jarbidge	Bruneau River Take-Out, BR at Indian Hot Springs	4,636	0	Easement or ROW Acquisition	High
Twin Falls	Jarbidge	Columbet Creek Access	7,858	0	Easement or ROW Acquisition	High
Twin Falls	Jarbidge	Little Pilgrim SRMA and Tuana Gulch/Snake River Access	1,095	0	Easement or ROW Acquisition	Low
Twin Falls	Jarbidge	The Arch Access	16,807	0	Easement or ROW Acquisition	Medium
Twin Falls	Jarbidge	Twin Lakes	12,862	0	Easement or ROW Acquisition	High
Twin Falls	Shoshone	Baseline	0	851	Easement or ROW Acquisition	Medium
Twin Falls	Shoshone	Baseline	854	0	Easement or ROW Acquisition	Low
Twin Falls	Shoshone	Baugh Creek	758	0	Easement or ROW Acquisition	Low
Twin Falls	Shoshone	Bowl Crater	0	660	Fee Acquisition	Low
Twin Falls	Shoshone	Bunker Hill	0	2,425	Easement or ROW Acquisition	High
Twin Falls	Shoshone	Cannonball Mtn	4,174	0	Easement or ROW Acquisition	Low

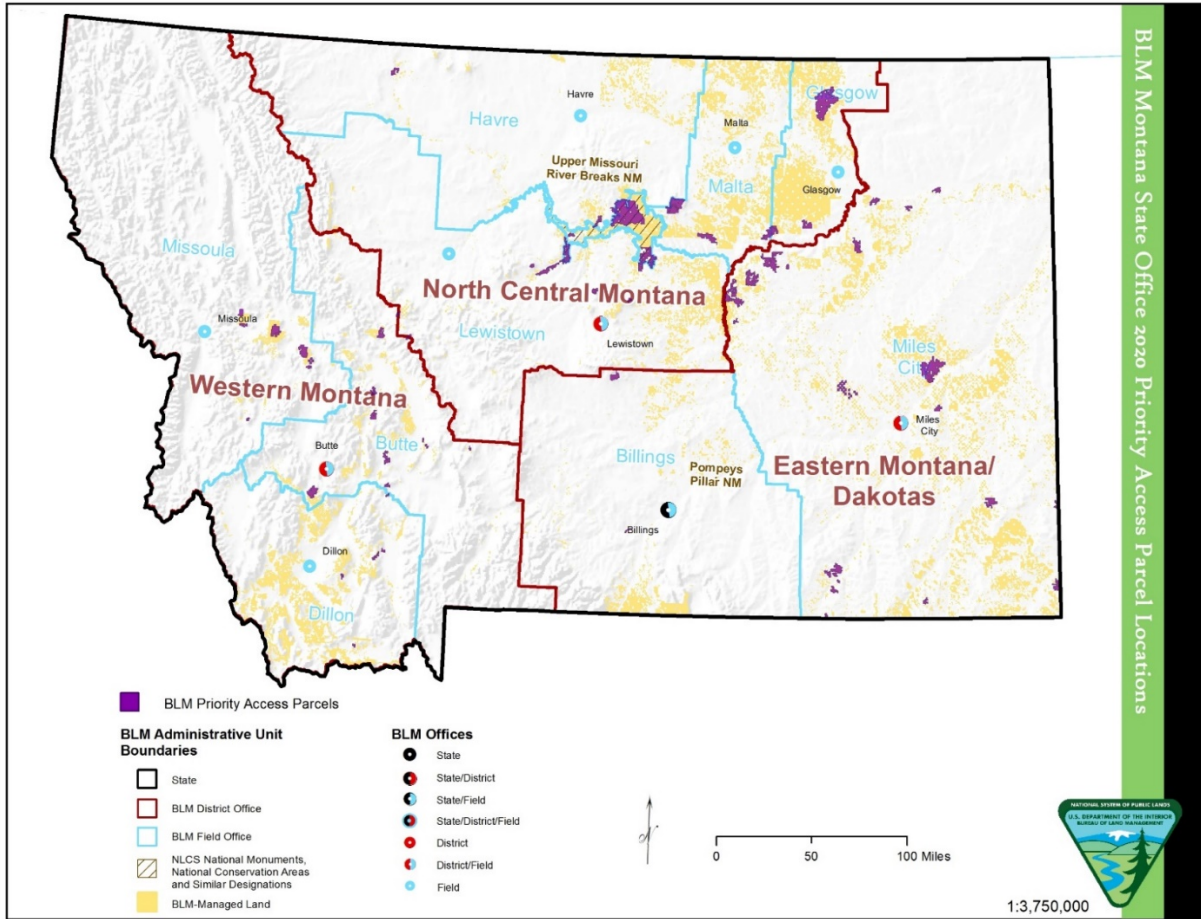
Attachment – 2020 BLM Dingell Act Priority Access List

District Office	Field Office	Parcel Area Name	# Acres Legally Inaccessible	# Acres Significantly Restricted	Potential Access Remedy	State Priority Ranking
Twin Falls	Shoshone	Davis Mtn	998	0	Other	High
Twin Falls	Shoshone	Elk Creek	856	0	Easement or ROW Acquisition	Low
Twin Falls	Shoshone	Elk Mountain	3,204	0	Easement or ROW Acquisition	Low
Twin Falls	Shoshone	Freidman Creek	0	8,389	Easement or ROW Acquisition	High
Twin Falls	Shoshone	Hideaway	1,092	0	Easement or ROW Acquisition	Low
Twin Falls	Shoshone	High Five	2,915	0	Easement or ROW Acquisition	Low
Twin Falls	Shoshone	Lava Lake	982	0	Easement or ROW Acquisition	Low
Twin Falls	Shoshone	Little City of Rocks	0	2,757	Other	High
Twin Falls	Shoshone	Little Fish Creek	1,664	0	Easement or ROW Acquisition	Low
Twin Falls	Shoshone	Little Wood	0	4,379	Easement or ROW Acquisition	Low
Twin Falls	Shoshone	Paddelford	0	1,628	Fee Acquisition	Low
Twin Falls	Shoshone	Picabo Hills	1,237	0	Easement or ROW Acquisition	Low

Attachment – 2020 BLM Dingell Act Priority Access List

District Office	Field Office	Parcel Area Name	# Acres Legally Inaccessible	# Acres Significantly Restricted	Potential Access Remedy	State Priority Ranking
Twin Falls	Shoshone	Sheep Point	2,133	0	Easement or ROW Acquisition	Low
Twin Falls	Shoshone	Slaughterhouse	5,839	0	Easement or ROW Acquisition	High
Twin Falls	Shoshone	Stinson Hill	0	5,425	Easement or ROW Acquisition	Low
Twin Falls	Shoshone	Thompson Creek - a	1,678	0	Easement or ROW Acquisition	Low
Twin Falls	Shoshone	Willow Creek	866	0	Easement or ROW Acquisition	Low
Grand Totals			328,821	275,170		

Montana/Dakotas State Office Priority Access List Parcel Locations



Montana/Dakotas State Office Priority Access List Parcel Locations

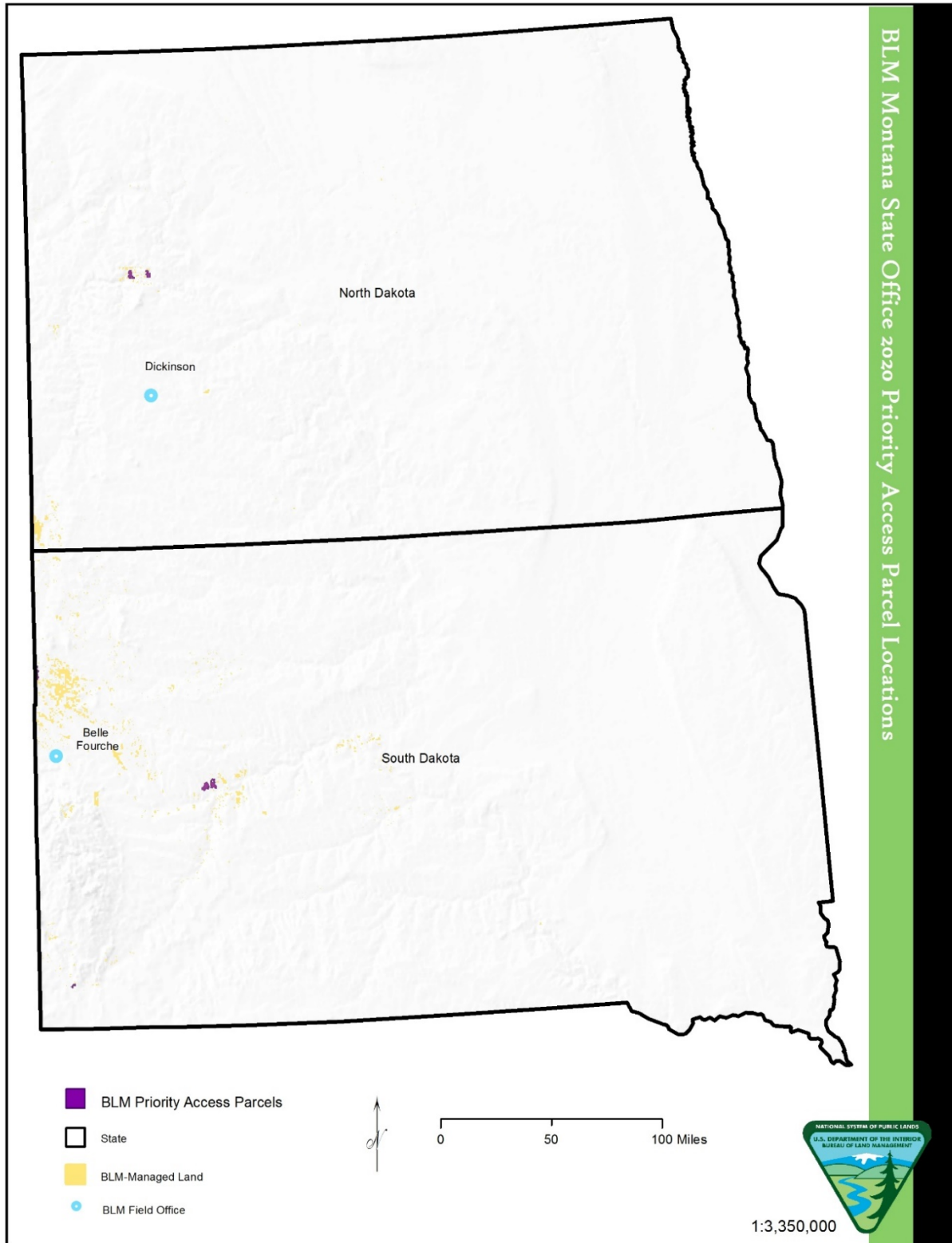


Table E. Montana/Dakotas State Office Priority Access List Parcels by District and Field Office

District Office	Field Office	Parcel Area Name	# Acres Legally Inaccessible	# Acres Significantly Restricted	Potential Access Remedy	State Priority Ranking
Eastern Montana/Dakotas	Billings	Twin Coulee South	0	6,949	Fee Acquisition	High
Eastern Montana/Dakotas	Billings	Young's Point	0	901	Easement or ROW Acquisition	Low
Eastern Montana/Dakotas	Miles City	Box Car	17,425	0	Easement or ROW Acquisition	High
Eastern Montana/Dakotas	Miles City	Calf Creek	0	1,540	Fee Acquisition	High
Eastern Montana/Dakotas	Miles City	Haxby	0	10,576	Easement or ROW Acquisition	High
Eastern Montana/Dakotas	Miles City	Horsford	0	3,791	Fee Acquisition	High
Eastern Montana/Dakotas	Miles City	Lower Musselshell - A	7,958	0	Fee Acquisition	High
Eastern Montana/Dakotas	Miles City	Lower Musselshell - B	0	10,782	Fee Acquisition	High
Eastern Montana/Dakotas	Miles City	Lower Musselshell - C	0	6,204	Fee Acquisition	High
Eastern Montana/Dakotas	Miles City	Montgomery-A	640	0	Fee Acquisition	High
Eastern Montana/Dakotas	Miles City	Montgomery-B	640	0	Fee Acquisition	High

Attachment – 2020 BLM Dingell Act Priority Access List

District Office	Field Office	Parcel Area Name	# Acres Legally Inaccessible	# Acres Significantly Restricted	Potential Access Remedy	State Priority Ranking
Eastern Montana/Dakotas	Miles City	Montgomery-C	640	0	Fee Acquisition	High
Eastern Montana/Dakotas	Miles City	Montgomery-D	640	0	Fee Acquisition	High
Eastern Montana/Dakotas	Miles City	Montgomery-E	640	0	Fee Acquisition	High
Eastern Montana/Dakotas	Miles City	Montgomery-F	640	0	Fee Acquisition	High
Eastern Montana/Dakotas	Miles City	Montgomery-G	640	0	Fee Acquisition	High
Eastern Montana/Dakotas	Miles City	Montgomery-H	640	0	Fee Acquisition	High
Eastern Montana/Dakotas	Miles City	Montgomery-I	640	0	Fee Acquisition	High
Eastern Montana/Dakotas	Miles City	Montgomery-J	640	0	Fee Acquisition	High
Eastern Montana/Dakotas	Miles City	Montgomery-K	640	0	Fee Acquisition	High
Eastern Montana/Dakotas	Miles City	Montgomery-L	640	0	Fee Acquisition	High
Eastern Montana/Dakotas	Miles City	Montgomery-M	640	0	Fee Acquisition	High

Attachment – 2020 BLM Dingell Act Priority Access List

District Office	Field Office	Parcel Area Name	# Acres Legally Inaccessible	# Acres Significantly Restricted	Potential Access Remedy	State Priority Ranking
Eastern Montana/Dakotas	Miles City	Montgomery-N	640	0	Fee Acquisition	High
Eastern Montana/Dakotas	Miles City	Montgomery-O	640	0	Fee Acquisition	High
Eastern Montana/Dakotas	Miles City	Montgomery-P	640	0	Fee Acquisition	High
Eastern Montana/Dakotas	Miles City	Montgomery-Q	640	0	Fee Acquisition	High
Eastern Montana/Dakotas	Miles City	Montgomery-R	640	0	Fee Acquisition	High
Eastern Montana/Dakotas	Miles City	Montgomery-S	640	0	Fee Acquisition	High
Eastern Montana/Dakotas	Miles City	Terry Badlands	0	48,496	Easement or ROW Acquisition	High
Eastern Montana/Dakotas	North Dakota	Figure 4	0	2,417	Easement or ROW Acquisition	Medium
Eastern Montana/Dakotas	North Dakota	Lost Bridge	0	3,285	Fee Acquisition	High
Eastern Montana/Dakotas	South Dakota	Big Cedar	912	0	Conservation Easement w/ Access	High
Eastern Montana/Dakotas	South Dakota	Boneita Springs	640	0	Conservation Easement w/ Access	Medium

Attachment – 2020 BLM Dingell Act Priority Access List

District Office	Field Office	Parcel Area Name	# Acres Legally Inaccessible	# Acres Significantly Restricted	Potential Access Remedy	State Priority Ranking
Eastern Montana/ Dakotas	South Dakota	Branding Iron	1,547	0	Conservation Easement w/ Access	High
Eastern Montana/ Dakotas	South Dakota	Buffalo Creek	1,120	0	Conservation Easement w/ Access	Medium
Eastern Montana/ Dakotas	South Dakota	Bull Creek	4,276	0	Conservation Easement w/ Access	High
Eastern Montana/ Dakotas	South Dakota	Cargo	7,336	0	Conservation Easement w/ Access	Medium
Eastern Montana/ Dakotas	South Dakota	East Badlands	4,320	0	Conservation Easement w/ Access	High
Eastern Montana/ Dakotas	South Dakota	Elm Creek	1,262	0	Conservation Easement w/ Access	Low
Eastern Montana/ Dakotas	South Dakota	Foster Creek	1,672	0	Conservation Easement w/ Access	Low
Eastern Montana/ Dakotas	South Dakota	Four Mile Cr - A	880	0	Conservation Easement w/ Access	Medium
Eastern Montana/ Dakotas	South Dakota	Four Mile Cr - B	880	0	Conservation Easement w/ Access	Medium
Eastern Montana/ Dakotas	South Dakota	Fowler	1,000	0	Conservation Easement w/ Access	Medium
Eastern Montana/ Dakotas	South Dakota	Frozen Horse - A	1,240	0	Conservation Easement w/ Access	Medium

Attachment – 2020 BLM Dingell Act Priority Access List

District Office	Field Office	Parcel Area Name	# Acres Legally Inaccessible	# Acres Significantly Restricted	Potential Access Remedy	State Priority Ranking
Eastern Montana/Dakotas	South Dakota	Frozen Horse - B	3,494	0	Conservation Easement w/ Access	Medium
Eastern Montana/Dakotas	South Dakota	Jump Off - A	1,000	0	Conservation Easement w/ Access	Medium
Eastern Montana/Dakotas	South Dakota	Jump Off - B	911	0	Conservation Easement w/ Access	Medium
Eastern Montana/Dakotas	South Dakota	Linsay Butte	720	0	Conservation Easement w/ Access	Low
Eastern Montana/Dakotas	South Dakota	Mission Creek	1,040	0	Conservation Easement w/ Access	Medium
Eastern Montana/Dakotas	South Dakota	Off Center	1,360	0	Conservation Easement w/ Access	Medium
Eastern Montana/Dakotas	South Dakota	Orton Flat	719	0	Conservation Easement w/ Access	Medium
Eastern Montana/Dakotas	South Dakota	Persche	680	0	Conservation Easement w/ Access	Medium
Eastern Montana/Dakotas	South Dakota	Pleasant Valley	1,936	0	Conservation Easement w/ Access	Medium
Eastern Montana/Dakotas	South Dakota	Poison Weed South	760	0	Conservation Easement w/ Access	High
Eastern Montana/Dakotas	South Dakota	Porcupine Creek	640	0	Conservation Easement w/ Access	Medium

Attachment – 2020 BLM Dingell Act Priority Access List

District Office	Field Office	Parcel Area Name	# Acres Legally Inaccessible	# Acres Significantly Restricted	Potential Access Remedy	State Priority Ranking
Eastern Montana/Dakotas	South Dakota	River	960	0	Conservation Easement w/ Access	Medium
Eastern Montana/Dakotas	South Dakota	Ruben Creek	1,040	0	Conservation Easement w/ Access	Low
Eastern Montana/Dakotas	South Dakota	S. F. Moreau	840	0	Conservation Easement w/ Access	Medium
Eastern Montana/Dakotas	South Dakota	South Willow Creek	1,120	0	Conservation Easement w/ Access	Low
Eastern Montana/Dakotas	South Dakota	Station Elm	1,169	0	Conservation Easement w/ Access	Low
Eastern Montana/Dakotas	South Dakota	Trussman	876	0	Conservation Easement w/ Access	High
Eastern Montana/Dakotas	South Dakota	TT Butte	1,194	0	Conservation Easement w/ Access	Medium
Eastern Montana/Dakotas	South Dakota	Two Top	1,208	0	Conservation Easement w/ Access	Medium
Eastern Montana/Dakotas	South Dakota	Whimmer Whammer A	2,366	0	Conservation Easement w/ Access	High
Eastern Montana/Dakotas	South Dakota	Whimmer Whammer B	1,280	0	Conservation Easement w/ Access	High
Eastern Montana/Dakotas	South Dakota	Whimmer Whammer C	1,040	0	Conservation Easement w/ Access	High

Attachment – 2020 BLM Dingell Act Priority Access List

District Office	Field Office	Parcel Area Name	# Acres Legally Inaccessible	# Acres Significantly Restricted	Potential Access Remedy	State Priority Ranking
North Central Montana	Glasgow	Bitter Creek WSA	40,000	10,000	Easement or ROW Acquisition	High
North Central Montana	Glasgow	Deep Creek	10,000	15,000	Easement or ROW Acquisition	High
North Central Montana	Glasgow	South Shufeldt Ridge	15,000	5,000	Easement or ROW Acquisition	High
North Central Montana	Havre	Black Coulee	0	4,666	Fee Acquisition	High
North Central Montana	Havre	Kevin Rim ACEC	4,532	0	Easement or ROW Acquisition	Medium
North Central Montana	Lewistown	Arrow Creek Breaks F	0	9,215	Other	High
North Central Montana	Lewistown	Log Gulch	1,248	0	Other	Medium
North Central Montana	Lewistown	Log Gulch	1,248	0	Other	Medium
North Central Montana	Lewistown	Log Gulch - Black Butte	1,299	0	Fee/Easement	Medium
North Central Montana	Lewistown	North Moccasin	0	2,594	Other	High
North Central Montana	Lewistown	Square Butte	1,947	0	Other	High

Attachment – 2020 BLM Dingell Act Priority Access List

District Office	Field Office	Parcel Area Name	# Acres Legally Inaccessible	# Acres Significantly Restricted	Potential Access Remedy	State Priority Ranking
North Central Montana	Malta	Burnt Lodge WSA	0	7,000	Easement or ROW Acquisition	High
North Central Montana	Malta	Loving U	0	7,000	Easement or ROW Acquisition	High
North Central Montana	Malta	Saddle Butte	0	2,000	Easement or ROW Acquisition	High
North Central Montana	Upper Missouri River Breaks NM	Arrow Cr Breaks - A	2,381	0	Easement or ROW Acquisition	High
North Central Montana	Upper Missouri River Breaks NM	Arrow Cr Breaks - B	859	0	Easement or ROW Acquisition	High
North Central Montana	Upper Missouri River Breaks NM	Arrow Cr Breaks - C	3,967	0	Easement or ROW Acquisition	High
North Central Montana	Upper Missouri River Breaks NM	Arrow Cr Breaks - E	2,586	0	Easement or ROW Acquisition	High
North Central Montana	Upper Missouri River Breaks NM	Arrow Cr Breaks - F	0	2,000	Easement or ROW Acquisition	High
North Central Montana	Upper Missouri River Breaks NM	Arrow Cr. Breaks - D	8,242	0	Easement or ROW Acquisition	High
North Central Montana	Upper Missouri River Breaks NM	Bullwhacker/Lions Coulee	88,000	0	Easement or ROW Acquisition	High

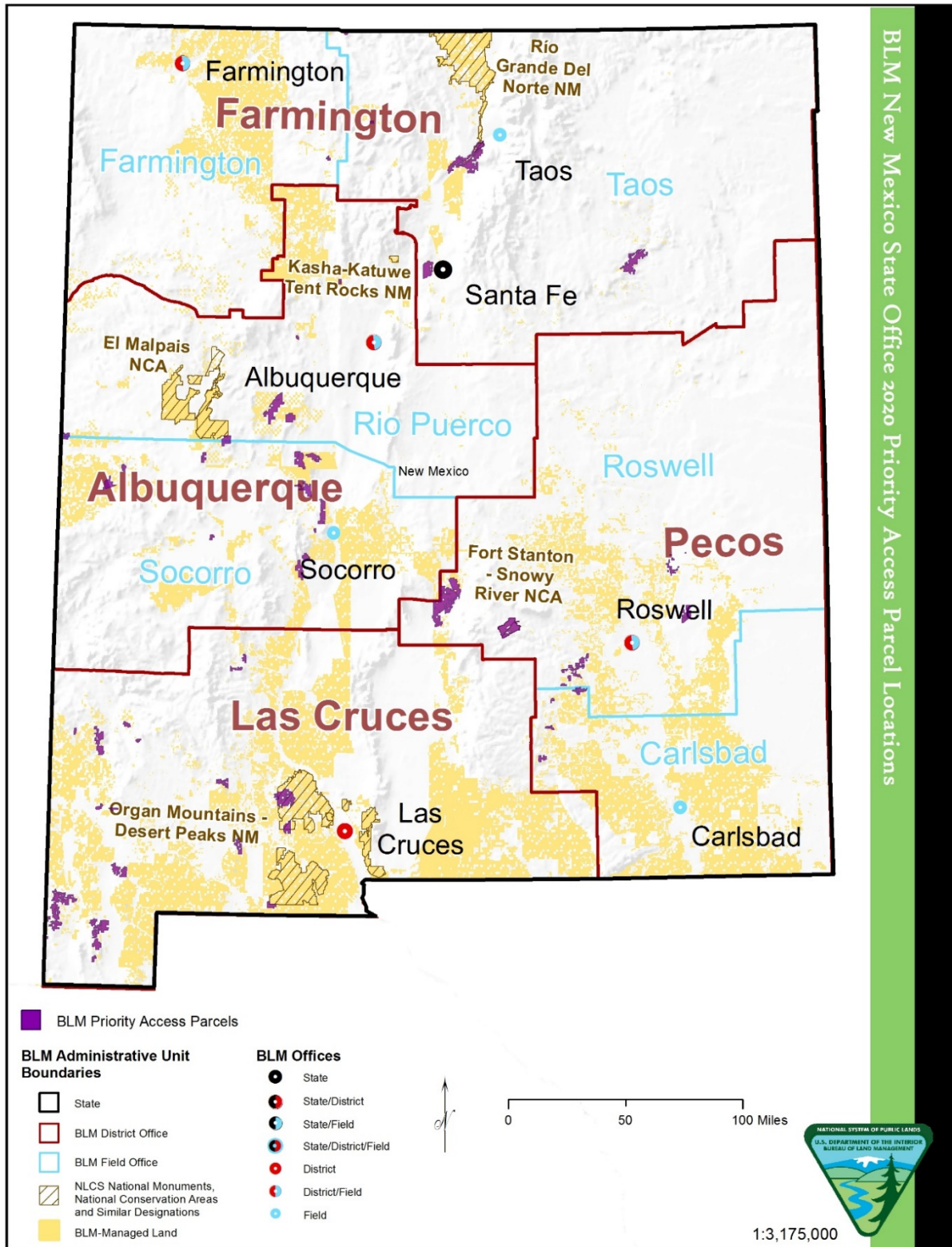
Attachment – 2020 BLM Dingell Act Priority Access List

District Office	Field Office	Parcel Area Name	# Acres Legally Inaccessible	# Acres Significantly Restricted	Potential Access Remedy	State Priority Ranking
North Central Montana	Upper Missouri River Breaks NM	Fargo Coulee/Mabee Rd - A	0	29,095	Easement or ROW Acquisition	High
Western Montana	Butte	Black Sage	5,926	5,926	Easement or ROW Acquisition	Medium
Western Montana	Butte	Boulder River	814	814	Easement or ROW Acquisition	Low
Western Montana	Butte	Pole Gulch - Sixteen Mile	746	746	Easement or ROW Acquisition	Medium
Western Montana	Butte	Six Mile	681	681	Easement or ROW Acquisition	Low
Western Montana	Butte	W Elkhorn Mountains	5,876	5,876	Easement or ROW Acquisition	Medium
Western Montana	Butte	W Elkhorn Mountains - Muskrat	0	5,537	Other	High
Western Montana	Dillon	Cottonwood Creek	1,198	0	Fee/Easement	Medium
Western Montana	Dillon	Jackson Isolated	900	0	Fee/Easement	Medium
Western Montana	Dillon	Postlewaite Creek - A	879	0	Easement or ROW Acquisition	High
Western Montana	Dillon	Postlewaite Creek - B	768	0	Easement or ROW Acquisition	High
Western Montana	Dillon	Postlewaite Creek - C	786	0	Easement or ROW Acquisition	High

Attachment – 2020 BLM Dingell Act Priority Access List

District Office	Field Office	Parcel Area Name	# Acres Legally Inaccessible	# Acres Significantly Restricted	Potential Access Remedy	State Priority Ranking
Western Montana	Missoula	Antelope Creek	842	0	Easement or ROW Acquisition	Low
Western Montana	Missoula	Blackfoot-Morrison	0	1,908	Easement or ROW Acquisition	High
Western Montana	Missoula	Blackfoot-Belmont	0	4,458	Fee Acquisition	High
Western Montana	Missoula	Blackfoot-Morrison	640	0	Easement or ROW Acquisition	High
Western Montana	Missoula	Hoodoos - a	640	0	Fee Acquisition	High
Western Montana	Missoula	Hoodoos - b	640	0	Fee Acquisition	High
Western Montana	Missoula	Hoodoos - c	640	0	Fee Acquisition	High
Western Montana	Missoula	Hoodoos - d	640	0	Fee Acquisition	High
Western Montana	Missoula	Hoodoos- Warm Springs	0	1,746	Fee Acquisition	High
Grand Totals			294,906	216,203		

New Mexico State Office Priority Access List Parcel Locations



New Mexico State Office Priority Access List Parcel Locations

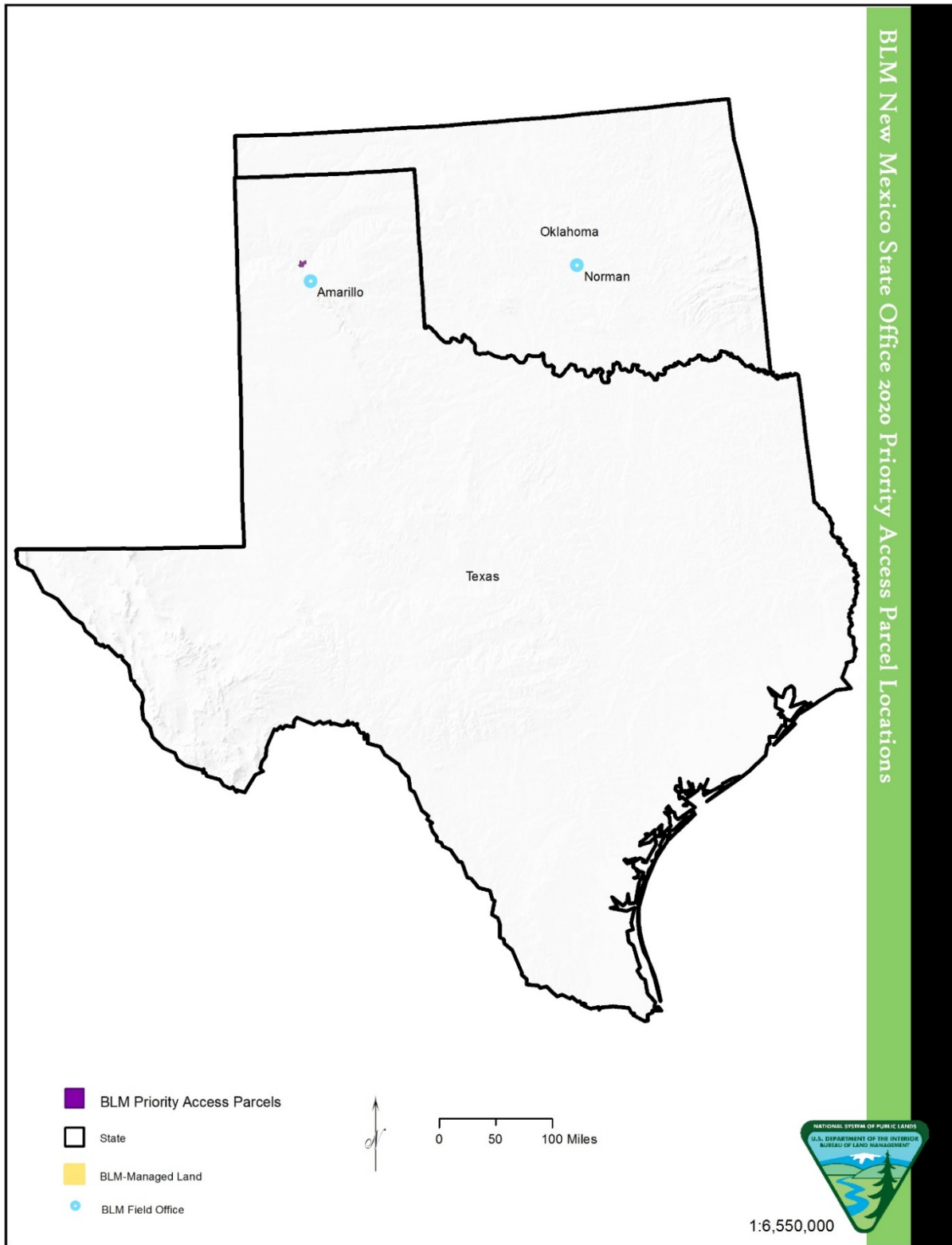


Table F. New Mexico State Office Priority Access List Parcels by District and Field Office

District Office	Field Office	Parcel Area Name	# Acres Legally Inaccessible	# Acres Significantly Restricted	Potential Access Remedy	State Priority Ranking
Albuquerque	Rio Puerco	Estrada North	0	3,065	Other	Low
Albuquerque	Rio Puerco	Mertz Ranch	0	7,485	Fee/Easement	Low
Albuquerque	Rio Puerco	Mesa Gallina	0	7,282	Fee/Easement	Low
Albuquerque	Rio Puerco	Standing Rock	0	834	Easement or ROW Acquisition	Low
Albuquerque	Rio Puerco	Volcano Hill	23,824	0	Fee/Easement	Low
Albuquerque	Rio Puerco	White Ridge Bike Trail	1,121	0	Fee/Easement	Medium
Albuquerque	Socorro	Black Hills	721	0	Easement or ROW Acquisition	Low
Albuquerque	Socorro	Devils Backbone WSA Access	7,893	0	Fee/Easement	Medium
Albuquerque	Socorro	Devils Backbone WSA Access Central	0	10,129	Fee/Easement	Medium
Albuquerque	Socorro	Devils Backbone WSA Access Northeast	0	6,511	Fee/Easement	Medium
Albuquerque	Socorro	Devils Backbone WSA Access Northwest	0	12,686	Fee/Easement	Medium
Albuquerque	Socorro	Devils Backbone WSA Access South	0	11,326	Fee/Easement	Medium
Albuquerque	Socorro	Eagle Peak WSA Access	0	7,778	Fee/Easement	Medium
Albuquerque	Socorro	East Magdalena Public Access	0	3,158	Fee/Easement	Medium

Attachment – 2020 BLM Dingell Act Priority Access List

District Office	Field Office	Parcel Area Name	# Acres Legally Inaccessible	# Acres Significantly Restricted	Potential Access Remedy	State Priority Ranking
Albuquerque	Socorro	Estrada South	0	1,600	Other	Low
Albuquerque	Socorro	Goat Tank Canyon	0	3,358	Fee/Easement	Medium
Albuquerque	Socorro	Montoya	0	1,766	Fee/Easement	Medium
Albuquerque	Socorro	Tejana Mesa	2,271	0	Easement or ROW Acquisition	Low
Albuquerque	Socorro	Water Canyon	801	0	Other	Low
Farmington	Farmington	Badland Hills	1,002	0	Easement or ROW Acquisition	Low
Farmington	Farmington	Thomas Canyon - North Parcel A	4,309	0	Fee/Easement	High
Farmington	Farmington	Thomas Canyon - North Parcel B	0	3,425	Fee/Easement	Medium
Farmington	Taos	Copper Hill ACEC	0	17,028	Fee/Easement	Medium
Farmington	Taos	Daggett Canyon	921	0	Easement or ROW Acquisition	Low
Farmington	Taos	La Cienega Area of Critical Environmental Concern	0	13,364	Fee/Easement	Low
Farmington	Taos	Lower Gorge ACEC - Rio Arriba County	0	10,177	Fee/Easement	Medium
Farmington	Taos	Lower Gorge ACEC - Taos County	0	11,226	Fee/Easement	Low
Farmington	Taos	Sabinoso Wilderness/ACEC	0	22,743	Fee/Easement	High
Las Cruces	Las Cruces	Animas Mountains - a	681	0	Fee/Easement	High

Attachment – 2020 BLM Dingell Act Priority Access List

District Office	Field Office	Parcel Area Name	# Acres Legally Inaccessible	# Acres Significantly Restricted	Potential Access Remedy	State Priority Ranking
Las Cruces	Las Cruces	Animas Mountains - b	1,719	0	Fee/Easement	High
Las Cruces	Las Cruces	Animas Mountains - c	3,042	0	Fee/Easement	High
Las Cruces	Las Cruces	Animas Mountains - d	3,877	0	Fee/Easement	High
Las Cruces	Las Cruces	Animas Mountains - e	9,947	0	Fee/Easement	High
Las Cruces	Las Cruces	Camel Mountain	0	1,600	Other	Low
Las Cruces	Las Cruces	Central Peloncillo Mountains - a	679	0	Fee/Easement	Medium
Las Cruces	Las Cruces	Central Peloncillo Mountains - b	818	0	Fee/Easement	Medium
Las Cruces	Las Cruces	Central Peloncillo Mountains - c	3,020	0	Fee/Easement	High
Las Cruces	Las Cruces	Central Peloncillo Mountains - d	3,936	0	Fee/Easement	High
Las Cruces	Las Cruces	Central Peloncillo Mountains - e	5,166	0	Fee/Easement	High
Las Cruces	Las Cruces	Central Peloncillo Mountains - f	5,842	0	Fee/Easement	Medium
Las Cruces	Las Cruces	Central Peloncillo Mountains - g	0	759	Fee/Easement	Medium
Las Cruces	Las Cruces	Chise North - a	1,452	0	Easement or ROW Acquisition	Low
Las Cruces	Las Cruces	Chise North - b	2,297	0	Easement or ROW Acquisition	Low
Las Cruces	Las Cruces	Continental Divide NST - Lordsburg - a	1,605	0	Fee/Easement	High

Attachment – 2020 BLM Dingell Act Priority Access List

District Office	Field Office	Parcel Area Name	# Acres Legally Inaccessible	# Acres Significantly Restricted	Potential Access Remedy	State Priority Ranking
Las Cruces	Las Cruces	Continental Divide NST - Lordsburg - b	2,183	0	Fee/Easement	High
Las Cruces	Las Cruces	Continental Divide NST - NW Animas - a	5,354	0	Fee/Easement	High
Las Cruces	Las Cruces	Continental Divide NST - NW Animas - b	6,173	0	Fee/Easement	High
Las Cruces	Las Cruces	Cooke's Range - a	715	0	Fee/Easement	Low
Las Cruces	Las Cruces	Cooke's Range - b	4,673	0	Fee/Easement	Medium
Las Cruces	Las Cruces	Cowboy Sprink WSA	0	6,660	Fee/Easement	High
Las Cruces	Las Cruces	GMU-21A - a	1,450	0	Fee/Easement	Medium
Las Cruces	Las Cruces	GMU-21A - b	2,296	0	Fee/Easement	Medium
Las Cruces	Las Cruces	GMU-21A - c	0	1,183	Fee/Easement	Medium
Las Cruces	Las Cruces	Grant County - a	1,312	0	Fee/Easement	Low
Las Cruces	Las Cruces	Grant County - b	6,274	0	Fee/Easement	Medium
Las Cruces	Las Cruces	Grant County - c	7,542	0	Fee/Easement	Medium
Las Cruces	Las Cruces	Gray Peak WSA	14,351	0	Fee/Easement	High
Las Cruces	Las Cruces	Little Florida Mountains	5,268	0	Fee/Easement	High
Las Cruces	Las Cruces	Mimms Well	0	7,114	Fee/Easement	Medium
Las Cruces	Las Cruces	NW Silver City - a	1,244	0	Fee/Easement	Low
Las Cruces	Las Cruces	NW Silver City - b	2,763	0	Fee/Easement	Medium
Las Cruces	Las Cruces	Saddle Mountain	0	23,955	Fee/Easement	Medium
Las Cruces	Las Cruces	Southern Peloncillo Mountains	641	0	Fee/Easement	Low

Attachment – 2020 BLM Dingell Act Priority Access List

District Office	Field Office	Parcel Area Name	# Acres Legally Inaccessible	# Acres Significantly Restricted	Potential Access Remedy	State Priority Ranking
Oklahoma	Oklahoma	Cross Bar Ranch	0	11,840	Fee/Easement	High
Pecos	Carlsbad	Champion Canyon	3,187	0	Fee/Easement	High
Pecos	Carlsbad	Loco Canyon	1,045	0	Easement or ROW Acquisition	Medium
Pecos	Carlsbad	Monument Canyon	4,772	0	Fee/Easement	High
Pecos	Carlsbad	Penasco Canyon	1,026	0	Easement or ROW Acquisition	Medium
Pecos	Roswell	Aztec	5,193	0	Fee/Easement	High
Pecos	Roswell	Baton Rouge	7,988	0	Fee/Easement	High
Pecos	Roswell	Fort Stanton-Snowy River Cave National Conservation Area	24,950	0	Fee/Easement	Medium
Pecos	Roswell	Monument Canyon Access - a	1,093	0	Easement or ROW Acquisition	High
Pecos	Roswell	Monument Canyon Access - b	1,103	0	Easement or ROW Acquisition	High
Pecos	Roswell	Monument Canyon Access - c	1,128	0	Easement or ROW Acquisition	High
Pecos	Roswell	Monument Canyon Access - d	1,138	0	Easement or ROW Acquisition	High
Pecos	Roswell	Monument Canyon Access - e	1,283	0	Easement or ROW Acquisition	High
Pecos	Roswell	Monument Canyon Access - f	1,552	0	Easement or ROW Acquisition	High

Attachment – 2020 BLM Dingell Act Priority Access List

District Office	Field Office	Parcel Area Name	# Acres Legally Inaccessible	# Acres Significantly Restricted	Potential Access Remedy	State Priority Ranking
Pecos	Roswell	Monument Canyon Access - g	2,230	0	Easement or ROW Acquisition	High
Pecos	Roswell	NM-RFO-Carrizozo Lava Flow	0	25,341	Easement or ROW Acquisition	Medium
Pecos	Roswell	Palma Mesa	8,816	0	Fee/Easement	High
<i>Grand Totals</i>			215,687	233,393		

Nevada State Office Priority Access List Parcel Locations

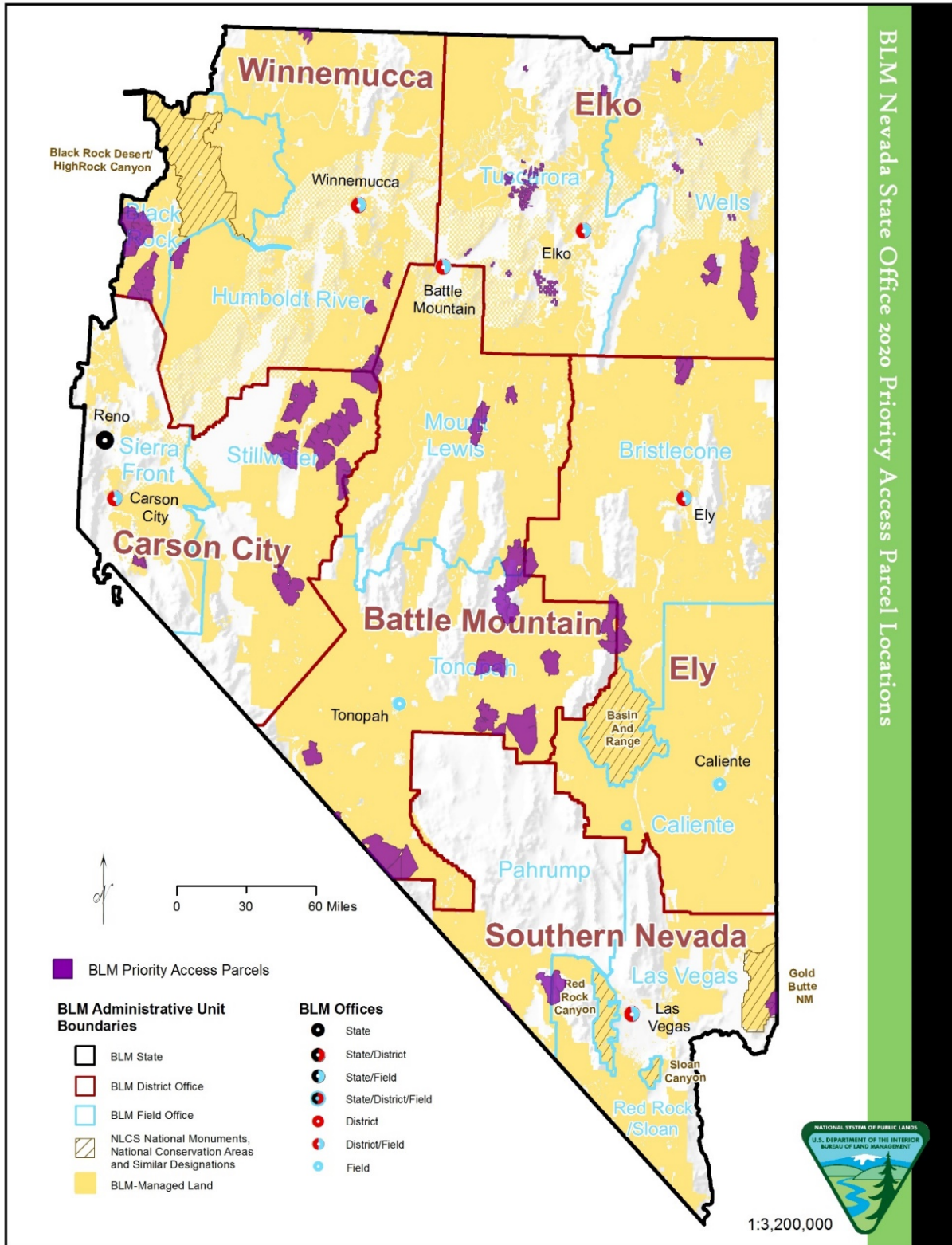


Table G. Nevada State Office Priority Access List Parcels by District and Field Office

District Office	Field Office	Parcel Area Name	# Acres Legally Inaccessible	# Acres Significantly Restricted	Potential Access Remedy	State Priority Ranking
Elko	Tuscarora	Duck Valley Reservation	1,526	0	Easement or ROW Acquisition	Medium
Elko	Tuscarora	Pinon Range	0	27,449	Easement or ROW Acquisition	Medium
Elko	Tuscarora	Rough Hills WSA	6,500	0	Easement or ROW Acquisition	Medium
Elko	Tuscarora	Tuscarora Mountains	48,720	0	Easement or ROW Acquisition	Medium
Elko	Tuscarora	Elko- a	10,820	0	Easement or ROW Acquisition	High
Elko	Wells	12 Mile Hot Springs	4,983	0	Easement or ROW Acquisition	High
Elko	Wells	Wood Hills OHV Area	808	0	Easement or ROW Acquisition	High
Grand Totals			73,357	27,449		

BLM Oregon State Office Priority Access List Parcel Locations

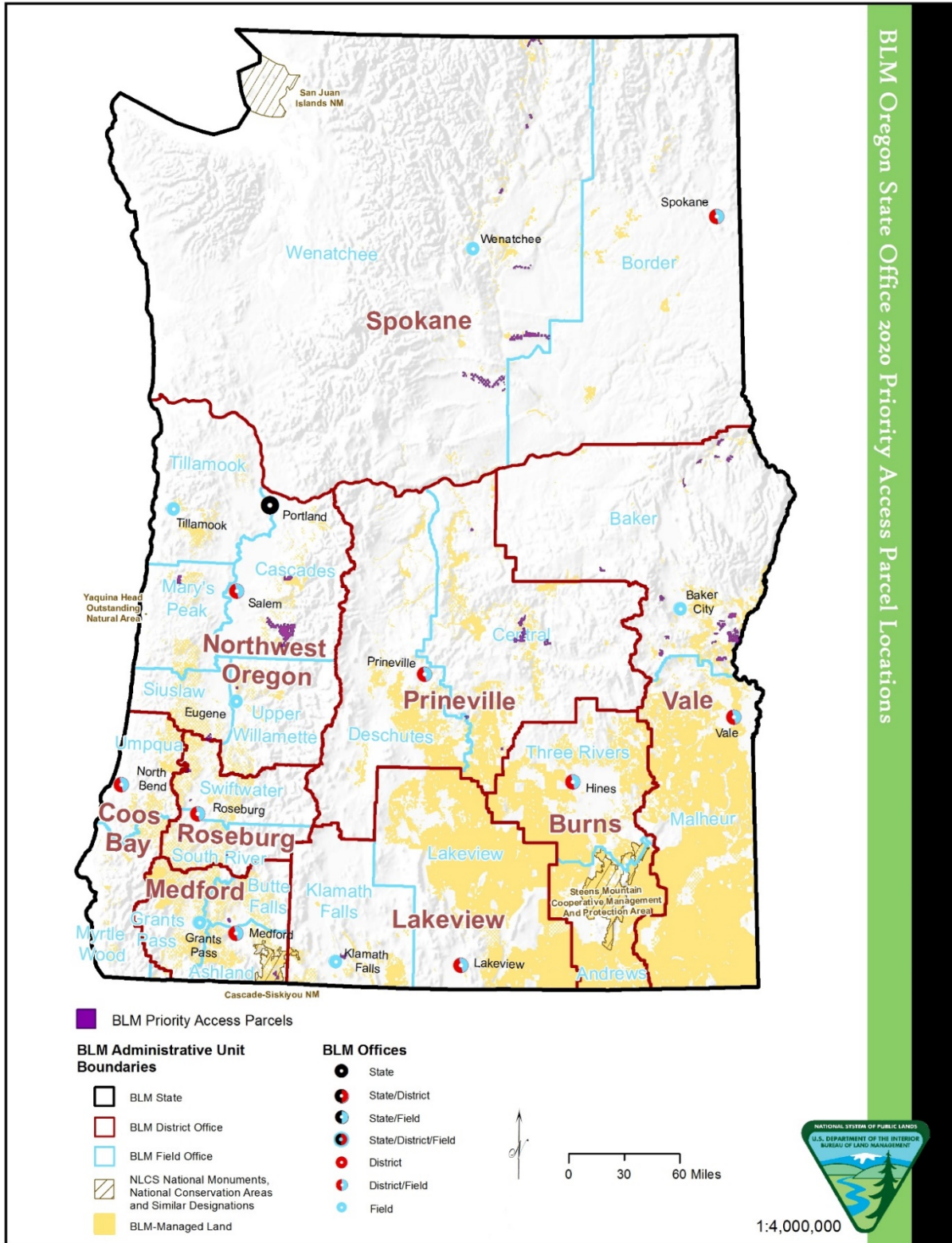


Table H. Oregon State Office Priority Access List Parcels by District and Field Office

District Office	Field Office	Parcel Area Name	# Acres Legally Inaccessible	# Acres Significantly Restricted	Potential Access Remedy	State Priority Ranking
Lakeview	Klamath Falls	Pine Grove	2,284	0	Easement or ROW Acquisition	TBD ¹
Medford	Ashland	Cascade-Siskiyou National Monument-Wildkat Mills	2,011	0	Fee Acquisition	High
Medford	Ashland	Cascade-Siskiyou National Monument-Wildkat Rancore	1,223	0	Fee Acquisition	High
Medford	Butte Falls	Table Rocks/ Kong Properties	1,083	0	Fee Acquisition	High
NW Oregon	Cascades	Molalla Pinecrest	0	1,040	Easement or ROW Acquisition	Medium
NW Oregon	Cascades	Peninsula Phase 1&2	1,843	0	Easement or ROW Acquisition	TBD
NW Oregon	Cascades	Snowpeak - Quartzville Tie	0	2,560	Easement or ROW Acquisition	High
NW Oregon	Mary's Peak	Valley of the Giants-Outstanding Natural Area	5,898	0	Easement or ROW Acquisition	High
NW Oregon	Siuslaw	Carpenter Bypass	2,807	0	Easement or ROW Acquisition	Low
NW Oregon	Upper Willamette	McGowan Creek Environmental Education Area	0	607	Easement or ROW Acquisition	High
Prineville	Central Oregon	3L	781	0	Easement or ROW Acquisition	TBD

Attachment – 2020 BLM Dingell Act Priority Access List

District Office	Field Office	Parcel Area Name	# Acres Legally Inaccessible	# Acres Significantly Restricted	Potential Access Remedy	State Priority Ranking
Prineville	Central Oregon	3R	0	1,311	Easement or ROW Acquisition	TBD
Prineville	Central Oregon	3S	1,690	0	Easement or ROW Acquisition	TBD
Prineville	Central Oregon	North of Point 98B	0	3,187	Easement or ROW Acquisition	TBD
Prineville	Central Oregon	Point_24A	649	0	Easement or ROW Acquisition	TBD
Prineville	Central Oregon	Point_62C	0	6,736	Easement or ROW Acquisition	TBD
Prineville	Central Oregon	Points_62A&92A	0	5,069	Easement or ROW Acquisition	TBD
Prineville	Deschutes	3C	960	0	Easement or ROW Acquisition	TBD
Roseburg	South River	Umpqua River Basin Hunting, Fishing, and Recreation Access Project Phase II (Parcel 2)	182	182	Easement or ROW Acquisition	Medium
Roseburg	Swiftwater	Umpqua River Basin Hunting, Fishing, and Recreation Access Project Phase I	1,104	107	Easement or ROW Acquisition	High
Roseburg	Swiftwater	Umpqua River Basin Hunting, Fishing, and Recreation Access Project Phase II (Parcel 1)	297	247	Easement or ROW Acquisition	Medium

Attachment – 2020 BLM Dingell Act Priority Access List

District Office	Field Office	Parcel Area Name	# Acres Legally Inaccessible	# Acres Significantly Restricted	Potential Access Remedy	State Priority Ranking
Roseburg	Swiftwater	Umpqua River Basin Hunting, Fishing, and Recreation Access Project Phase II (Parcel 3)	278	123	Easement or ROW Acquisition	Medium
Spokane	Wenatchee	Beezley Hills	2,814	0	Easement or ROW Acquisition	Low
Spokane	Wenatchee	Deer Mountain	1,565	0	Easement or ROW Acquisition	Medium
Spokane	Wenatchee	Pogue Mountain	0	1,229	Easement or ROW Acquisition	Low
Spokane	Wenatchee	Rattlesnake Hills (checkerboard)	17,417	562	Easement or ROW Acquisition	TBD
Spokane	Wenatchee	Saddle Mountains (checkerboard) not including west end.	0	19,710	Easement or ROW Acquisition	TBD
Spokane	Wenatchee	Similkameen Trail - a	60	0	Easement or ROW Acquisition	Medium
Spokane	Wenatchee	Similkameen Trail - b	0	755	Easement or ROW Acquisition	Medium
Spokane	Wenatchee	Similkameen Trail - c	0	2,814	Easement or ROW Acquisition	Medium
Spokane	Wenatchee	Timerick Mountain	1,125	0	Easement or ROW Acquisition	TBD
Vale	Baker	Ash Grove	1,055	0	Easement or ROW Acquisition	TBD

Attachment – 2020 BLM Dingell Act Priority Access List

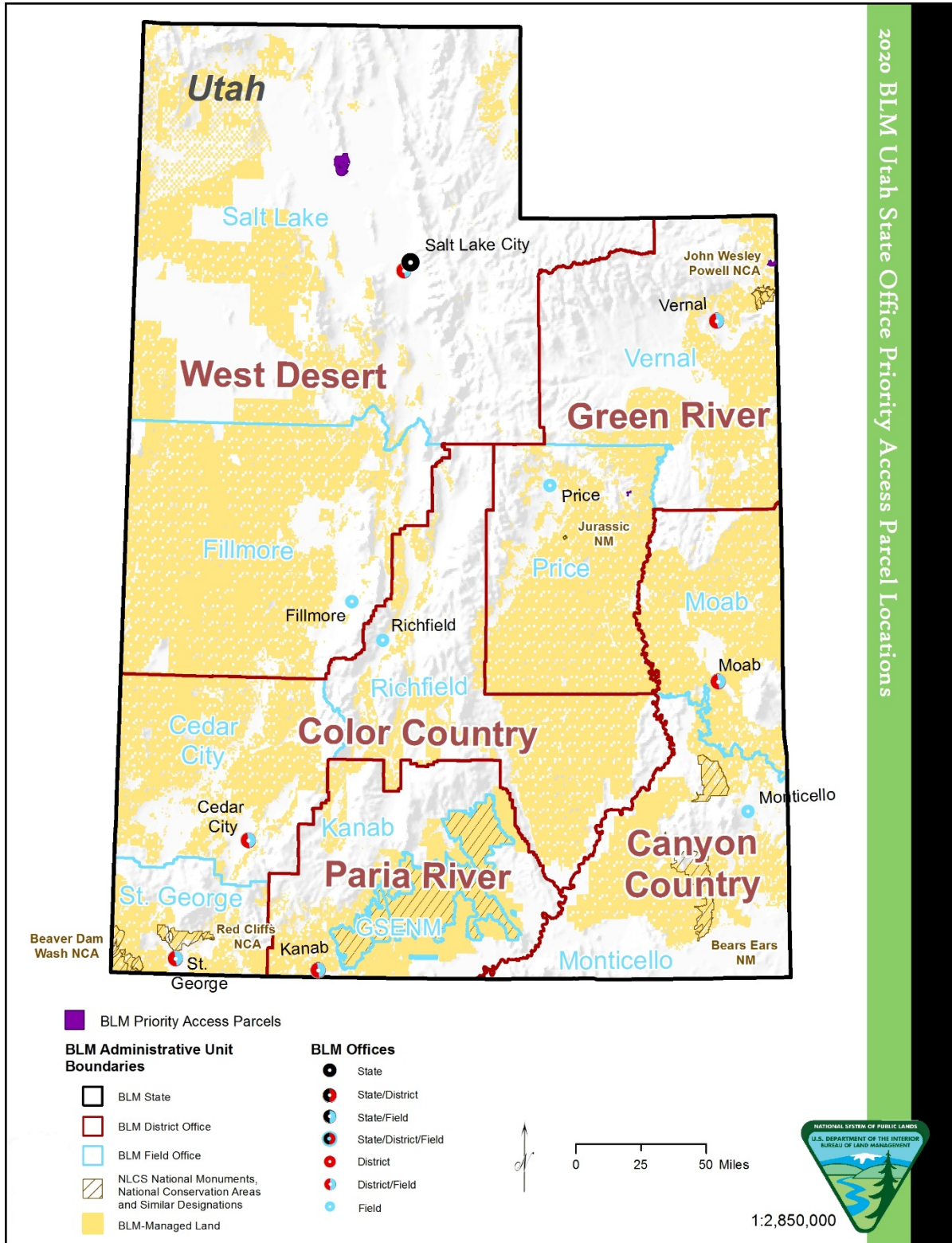
District Office	Field Office	Parcel Area Name	# Acres Legally Inaccessible	# Acres Significantly Restricted	Potential Access Remedy	State Priority Ranking
Vale	Baker	Big Springs Creek	951	0	Easement or ROW Acquisition	High
Vale	Baker	Cable Creek	1,325	0	Easement or ROW Acquisition	High
Vale	Baker	Conner Creek Road	10,835	0	Easement or ROW Acquisition	High
Vale	Baker	Flora	816	0	Easement or ROW Acquisition	TBD
Vale	Baker	Grande Ronde - Lost Prairie to Garrett Ridge	2,718	0	Easement or ROW Acquisition	High
Vale	Baker	Grande Ronde Wild and Scenic River Corridor - Sickfoot Creek	1,492	0	Easement or ROW Acquisition	High
Vale	Baker	Higgins Reservoir	2,983	0	Conservation Easement w/ Access	High
Vale	Baker	Howard Creek	1,059	0	Easement or ROW Acquisition	High
Vale	Baker	Hunt Mountain	0	2,523	Easement or ROW Acquisition	TBD
Vale	Baker	Joseph Canyon	2,787	0	Easement or ROW Acquisition	High
Vale	Baker	Little Lookout Mountain	4,912	0	Easement or ROW Acquisition	High

Attachment – 2020 BLM Dingell Act Priority Access List

District Office	Field Office	Parcel Area Name	# Acres Legally Inaccessible	# Acres Significantly Restricted	Potential Access Remedy	State Priority Ranking
Vale	Baker	Lookout Mountain	0	5,607	Easement or ROW Acquisition	High
Vale	Baker	Rattle Snake Gulch	1,196	0	Easement or ROW Acquisition	TBD
Vale	Baker	Table Rock - Durbin Creek	0	5,404	Easement or ROW Acquisition	High
Vale	Baker	Timber Canyon	5,410	0	Easement or ROW Acquisition	High
Grand Totals			83,610	59,773		

¹*TBD – To Be Determined*

Utah State Office Priority Access List Parcel Locations

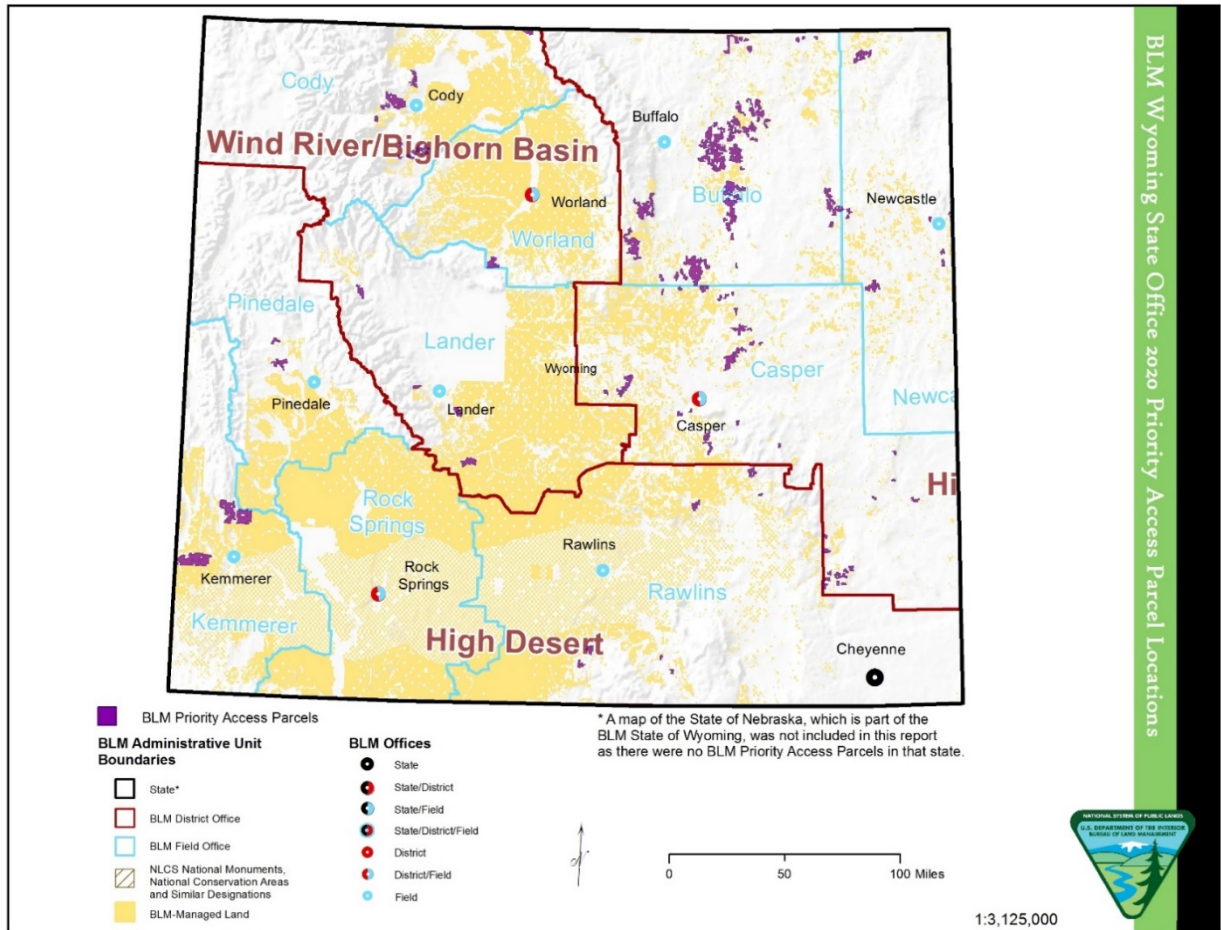


Attachment – 2020 BLM Dingell Act Priority Access List

Table I. Utah State Office Priority Access List Parcels by District and Field Office

District Office	Field Office	Parcel Area Name	# Acres Legally Inaccessible	# Acres Significantly Restricted	Potential Access Remedy	State Priority Ranking
Green River	Price	20-Carbon-pr-66	795	0	Easement or ROW Acquisition	Low
Green River	Vernal	20-Daggett-vn-84	0	3,264	Easement or ROW Acquisition	Medium
West Desert	Salt Lake	20-Box Elder-sl-1061	0	759	Easement or ROW Acquisition	Low
Grand Totals			795	4,023		

Wyoming State Office Priority Access List Parcel Locations



Attachment – 2020 BLM Dingell Act Priority Access List

Table J. Wyoming State Office Priority Access Parcels by District and Field Office

District Office	Field Office	Parcel Area Name	# Acres Legally Inaccessible	# Acres Significantly Restricted	Potential Access Remedy	State Priority Ranking
High Desert	Kremmerer	2020 BLM-Identified Parcel - Collett Creek / Bull Pen	0	36,644	Easement or ROW Acquisition	Low
High Desert	Kremmerer	2020 BLM-Identified Parcel - Rocky Gap	0	21,056	Easement or ROW Acquisition	Low
High Desert	Kremmerer	2020 BLM-Identified Parcel - Trail Creek	0	22,078	Easement or ROW Acquisition	Low
High Desert	Pinedale	2020 Public Nominated Parcel - Beaver Ridge	7,261	0	Easement or ROW Acquisition	Medium
High Desert	Pinedale	2020 Public Nominated Parcel - Kismet Peak	2,678	0	Easement or ROW Acquisition	Low
High Desert	Rawlins	2020 BLM-Identified Parcel - McCarty Canyon 1	4,005	0	Easement or ROW Acquisition	High
High Desert	Rawlins	2020 BLM-Identified Parcel - Platte Valley	1,386	0	Fee Acquisition	Low
High Desert	Rawlins	2020 BLM-Identified Parcel - Shirley Mountain	5,034	0	Easement or ROW Acquisition	High
High Desert	Rawlins	2020 BLM-Identified Parcel - Stratton Parcel	2,618	0	Easement or ROW Acquisition	Medium
High Desert	Rawlins	2020 Public Nominated Parcel - Baggot Rocks	1,080	0	Easement or ROW Acquisition	High
High Desert	Rawlins	2020 Public Nominated Parcel - Little Medicine	5,116	0	Easement or ROW Acquisition	High

Attachment – 2020 BLM Dingell Act Priority Access List

District Office	Field Office	Parcel Area Name	# Acres Legally Inaccessible	# Acres Significantly Restricted	Potential Access Remedy	State Priority Ranking
High Desert	Rawlins	2020 Public Nominated Parcel - Mine Hills	0	800	Fee Acquisition	High
High Plains	Buffalo	2020 BLM-Identified Parcel - Kaycee SE	30,614	0	Easement or ROW Acquisition	Low
High Plains	Buffalo	2020 BLM-Identified Parcel - North Fork	0	12,247	Easement or ROW Acquisition	Low
High Plains	Buffalo	2020 BLM-Identified Parcel - North Fork WSA	0	10,089	Easement or ROW Acquisition	Low
High Plains	Buffalo	2020 BLM-Identified Parcel - SA Road	2,522	0	Fee Acquisition	High
High Plains	Buffalo	2020 BLM-Identified Parcel - Table Mountain	20,688	0	Easement or ROW Acquisition	Low
High Plains	Buffalo	2020 BLM-Identified Parcel - Windmill Draw	9,484	0	Easement or ROW Acquisition	Low
High Plains	Buffalo	2020 Public Nominated Parcel - Amos Draw	0	981	Easement or ROW Acquisition	Low
High Plains	Buffalo	2020 Public Nominated Parcel - Amos Draw E	0	657	Easement or ROW Acquisition	Low
High Plains	Buffalo	2020 Public Nominated Parcel - Barber Creek	894	0	Easement or ROW Acquisition	Low
High Plains	Buffalo	2020 Public Nominated Parcel - Beechler Draw NW	1,380	0	Easement or ROW Acquisition	Low
High Plains	Buffalo	2020 Public Nominated Parcel - Big Remington Creek	3,779	0	Fee Acquisition	Medium

Attachment – 2020 BLM Dingell Act Priority Access List

District Office	Field Office	Parcel Area Name	# Acres Legally Inaccessible	# Acres Significantly Restricted	Potential Access Remedy	State Priority Ranking
High Plains	Buffalo	2020 Public Nominated Parcel - Black Bill Draw	1,182	0	Easement or ROW Acquisition	Low
High Plains	Buffalo	2020 Public Nominated Parcel - Cedar Draw	2,673	0	Easement or ROW Acquisition	Low
High Plains	Buffalo	2020 Public Nominated Parcel - Corral Creek - b	4,623	0	Easement or ROW Acquisition	Low
High Plains	Buffalo	2020 Public Nominated Parcel - Culp Draw - a	0	1,701	Easement or ROW Acquisition	Low
High Plains	Buffalo	2020 Public Nominated Parcel - Culp Draw - b	0	14,868	Easement or ROW Acquisition	Low
High Plains	Buffalo	2020 Public Nominated Parcel - Doud Draw	849	0	Easement or ROW Acquisition	Low
High Plains	Buffalo	2020 Public Nominated Parcel - Dry Fork Powder River	735	0	Easement or ROW Acquisition	Low
High Plains	Buffalo	2020 Public Nominated Parcel - East Spring Draw	3,838	0	Easement or ROW Acquisition	Low
High Plains	Buffalo	2020 Public Nominated Parcel - Fence Creek - a	299	0	Fee Acquisition	Medium
High Plains	Buffalo	2020 Public Nominated Parcel - Fence Creek - b	1,160	0	Fee Acquisition	Medium
High Plains	Buffalo	2020 Public Nominated Parcel - Government Draw	1,000	0	Easement or ROW Acquisition	Low
High Plains	Buffalo	2020 Public Nominated Parcel - Hilight	4,723	0	Easement or ROW Acquisition	Low

Attachment – 2020 BLM Dingell Act Priority Access List

District Office	Field Office	Parcel Area Name	# Acres Legally Inaccessible	# Acres Significantly Restricted	Potential Access Remedy	State Priority Ranking
High Plains	Buffalo	2020 Public Nominated Parcel - Jepson Draw	974	0	Easement or ROW Acquisition	Low
High Plains	Buffalo	2020 Public Nominated Parcel - Kinney Divide - a	0	123	Easement or ROW Acquisition	Low
High Plains	Buffalo	2020 Public Nominated Parcel - Kinney Divide - b	0	6,481	Easement or ROW Acquisition	Low
High Plains	Buffalo	2020 Public Nominated Parcel - Little Remington Creek	2,246	0	Easement or ROW Acquisition	Medium
High Plains	Buffalo	2020 Public Nominated Parcel - Lone Tree Gulch	2,080	0	Easement or ROW Acquisition	Low
High Plains	Buffalo	2020 Public Nominated Parcel - Meadow Draw	740	0	Easement or ROW Acquisition	Low
High Plains	Buffalo	2020 Public Nominated Parcel - Murphy Creek	890	0	Easement or ROW Acquisition	Low
High Plains	Buffalo	2020 Public Nominated Parcel - N Fortification Creek	0	700	Easement or ROW Acquisition	Low
High Plains	Buffalo	2020 Public Nominated Parcel - N Fortification Creek	0	3,207	Easement or ROW Acquisition	Low
High Plains	Buffalo	2020 Public Nominated Parcel - Nipple Butte	836	0	Easement or ROW Acquisition	Low
High Plains	Buffalo	2020 Public Nominated Parcel - North Fork Olmstead Creek	1,482	0	Easement or ROW Acquisition	Low

Attachment – 2020 BLM Dingell Act Priority Access List

District Office	Field Office	Parcel Area Name	# Acres Legally Inaccessible	# Acres Significantly Restricted	Potential Access Remedy	State Priority Ranking
High Plains	Buffalo	2020 Public Nominated Parcel - Nurse Draw	1,413	0	Easement or ROW Acquisition	Low
High Plains	Buffalo	2020 Public Nominated Parcel - Posey Creek	960	0	Easement or ROW Acquisition	Low
High Plains	Buffalo	2020 Public Nominated Parcel - Powder River Breaks	0	62,045	Easement or ROW Acquisition	Low
High Plains	Buffalo	2020 Public Nominated Parcel - Pumpkin Creek E	2,530	0	Easement or ROW Acquisition	Low
High Plains	Buffalo	2020 Public Nominated Parcel - Red Hills	800	0	Easement or ROW Acquisition	Low
High Plains	Buffalo	2020 Public Nominated Parcel - Robling Draw	1,983	0	Fee Acquisition	Medium
High Plains	Buffalo	2020 Public Nominated Parcel - SE Fortification Creek	0	7,459	Easement or ROW Acquisition	Low
High Plains	Buffalo	2020 Public Nominated Parcel - Snyder Ranch	1,334	0	Easement or ROW Acquisition	Low
High Plains	Buffalo	2020 Public Nominated Parcel - Soft Water Draw	0	841	Easement or ROW Acquisition	Low
High Plains	Buffalo	2020 Public Nominated Parcel - South Fork Red Fork Powder River	20,219	0	Easement or ROW Acquisition	Low
High Plains	Buffalo	2020 Public Nominated Parcel - Spring Draw South	965	0	Easement or ROW Acquisition	Low
High Plains	Buffalo	2020 Public Nominated Parcel - The Wall	1,799	0	Easement or ROW Acquisition	Low

Attachment – 2020 BLM Dingell Act Priority Access List

District Office	Field Office	Parcel Area Name	# Acres Legally Inaccessible	# Acres Significantly Restricted	Potential Access Remedy	State Priority Ranking
High Plains	Buffalo	2020 Public Nominated Parcel - Tisdale Mountain	2,339	0	Easement or ROW Acquisition	Low
High Plains	Buffalo	2020 Public Nominated Parcel - Turner Draw	3,707	0	Easement or ROW Acquisition	Low
High Plains	Buffalo	2020 Public Nominated Parcel - Twentymile Butte	2,859	0	Easement or ROW Acquisition	Low
High Plains	Buffalo	2020 Public Nominated Parcel - Twentymile Creek	0	1,184	Easement or ROW Acquisition	Low
High Plains	Buffalo	2020 Public Nominated Parcel - W Fortification Creek	0	5,429	Easement or ROW Acquisition	Low
High Plains	Buffalo	2020 Public Nominated Parcel - Watson Basin	948	0	Fee Acquisition	Low
High Plains	Buffalo	2020 Public Nominated Parcel - West Bacon Creek	2,026	0	Easement or ROW Acquisition	Low
High Plains	Buffalo	2020 Public Nominated Parcel - Williams Draw - a	1,047	0	Easement or ROW Acquisition	Low
High Plains	Buffalo	2020 Public Nominated Parcel - Williams Draw - b	13,942	0	Easement or ROW Acquisition	Low
High Plains	Buffalo	2020 Public Nominated Parcel - Yellow Hammer Buttes	6,994	0	Easement or ROW Acquisition	Low
High Plains	Casper	2020 BLM-Identified Parcel - Antelope 113	0	4,441	Easement or ROW Acquisition	Low
High Plains	Casper	2020 BLM-Identified Parcel - Deer Creek	0	1,064	Easement or ROW Acquisition	Low

Attachment – 2020 BLM Dingell Act Priority Access List

District Office	Field Office	Parcel Area Name	# Acres Legally Inaccessible	# Acres Significantly Restricted	Potential Access Remedy	State Priority Ranking
High Plains	Casper	2020 BLM-Identified Parcel - JY	4,480	0	Easement or ROW Acquisition	Low
High Plains	Casper	2020 BLM-Identified Parcel - North Pine Ridge	6,480	0	Easement or ROW Acquisition	Low
High Plains	Casper	2020 BLM-Identified Parcel - North Pine Ridge	360	0	Easement or ROW Acquisition	Low
High Plains	Casper	2020 BLM-Identified Parcel - Pine Mountain	12,070	0	Easement or ROW Acquisition	Medium
High Plains	Casper	2020 BLM-Identified Parcel - Sand Hills	6,376	0	Easement or ROW Acquisition	High
High Plains	Casper	2020 BLM-Identified Parcel - Sand Hills	11,465	0	Easement or ROW Acquisition	High
High Plains	Casper	2020 BLM-Identified Parcel - Shook	0	7,341	Easement or ROW Acquisition	Low
High Plains	Casper	2020 BLM-Identified Parcel - Tisdale Mountain	1,041	0	Easement or ROW Acquisition	Low
High Plains	Casper	2020 Public Nominated Parcel - Bessemer Mountain	1,840	0	Easement or ROW Acquisition	Medium
High Plains	Casper	2020 Public Nominated Parcel - Camp Guernsey	0	884	Easement or ROW Acquisition	Low
High Plains	Casper	2020 Public Nominated Parcel - Dead Dog Draw	1,308	0	Easement or ROW Acquisition	Low

Attachment – 2020 BLM Dingell Act Priority Access List

District Office	Field Office	Parcel Area Name	# Acres Legally Inaccessible	# Acres Significantly Restricted	Potential Access Remedy	State Priority Ranking
High Plains	Casper	2020 Public Nominated Parcel - Deadhead Creek	1,208	0	Easement or ROW Acquisition	Low
High Plains	Casper	2020 Public Nominated Parcel - Dry Fork Cheyenne River	715	0	Easement or ROW Acquisition	Low
High Plains	Casper	2020 Public Nominated Parcel - Edgerton	1,560	0	Easement or ROW Acquisition	Low
High Plains	Casper	2020 Public Nominated Parcel - Fly Draw	796	0	Easement or ROW Acquisition	Low
High Plains	Casper	2020 Public Nominated Parcel - Haystack Range	720	0	Easement or ROW Acquisition	Low
High Plains	Casper	2020 Public Nominated Parcel - Jackson Canyon	0	852	Easement or ROW Acquisition	Low
High Plains	Casper	2020 Public Nominated Parcel - Laramie River	1,119	0	Easement or ROW Acquisition	Low
High Plains	Casper	2020 Public Nominated Parcel - Lower South Sybille Creek	120	0	Easement or ROW Acquisition	Low
High Plains	Casper	2020 Public Nominated Parcel - Martin Ranch	1,699	0	Easement or ROW Acquisition	Low
High Plains	Casper	2020 Public Nominated Parcel - Pine Gulch	1,685	0	Easement or ROW Acquisition	Low
High Plains	Casper	2020 Public Nominated Parcel - Pine Ridge	1,000	0	Easement or ROW Acquisition	Low

Attachment – 2020 BLM Dingell Act Priority Access List

District Office	Field Office	Parcel Area Name	# Acres Legally Inaccessible	# Acres Significantly Restricted	Potential Access Remedy	State Priority Ranking
High Plains	Casper	2020 Public Nominated Parcel - Richeau Hills	1,319	0	Easement or ROW Acquisition	Low
High Plains	Casper	2020 Public Nominated Parcel - Sand Draw	2,317	0	Easement or ROW Acquisition	Low
High Plains	Casper	2020 Public Nominated Parcel - Sawmill Canyon	720	0	Easement or ROW Acquisition	Low
High Plains	Casper	2020 Public Nominated Parcel - South Steer Draw	960	0	Easement or ROW Acquisition	Low
High Plains	Casper	2020 Public Nominated Parcel - South Sybille Creek	2,160	0	Easement or ROW Acquisition	Low
High Plains	Casper	2020 Public Nominated Parcel - South Sybille Creek (East)	1,000	0	Easement or ROW Acquisition	Low
High Plains	Casper	2020 Public Nominated Parcel - Squaw Hill	1,929	0	Easement or ROW Acquisition	Low
High Plains	Casper	2020 Public Nominated Parcel - Squaw Mountain	2,621	0	Easement or ROW Acquisition	Low
High Plains	Casper	2020 Public Nominated Parcel - Turkey Springs Creek	842	0	Easement or ROW Acquisition	Low
High Plains	Casper	2020 Public Nominated Parcel - Wagon Hound Gorge	760	0	Easement or ROW Acquisition	Low
High Plains	Casper	2020 Public Nominated Parcel - Wallace Creek	1,519	0	Easement or ROW Acquisition	Low

Attachment – 2020 BLM Dingell Act Priority Access List

District Office	Field Office	Parcel Area Name	# Acres Legally Inaccessible	# Acres Significantly Restricted	Potential Access Remedy	State Priority Ranking
High Plains	Casper	2020 Public Nominated Parcel - Wildcat Hills	880	0	Easement or ROW Acquisition	Low
High Plains	Newcastle	2020 BLM-Identified Parcel - Clareton	1,320	0	Easement or ROW Acquisition	High
High Plains	Newcastle	2020 BLM-Identified Parcel – Clareton 2	9,531	0	Easement or ROW Acquisition	High
High Plains	Newcastle	2020 BLM-Identified Parcel - Stateline	0	2,787	Easement or ROW Acquisition	High
High Plains	Newcastle	2020 BLM-Identified Parcel - TL Reservoir	0	10,955	Easement or ROW Acquisition	Low
High Plains	Newcastle	2020 Public Nominated Parcel - Corral Creek - a	681	0	Easement or ROW Acquisition	Low
High Plains	Newcastle	2020 Public Nominated Parcel - Fourmile Draw	1,160	0	Conservation Easement w/ Access	High
High Plains	Newcastle	2020 Public Nominated Parcel - Lodgepole Creek W	960	0	Easement or ROW Acquisition	Low
High Plains	Newcastle	2020 Public Nominated Parcel - Owens SW	1,440	0	Conservation Easement w/ Access	Medium
High Plains	Newcastle	2020 Public Nominated Parcel - Stockade Beaver Creek N	960	0	Conservation Easement w/ Access	Low
High Plains	Newcastle	2020 Public Nominated Parcel - Stockade Beaver Creek S	800	0	Conservation Easement w/ Access	Low

Attachment – 2020 BLM Dingell Act Priority Access List

District Office	Field Office	Parcel Area Name	# Acres Legally Inaccessible	# Acres Significantly Restricted	Potential Access Remedy	State Priority Ranking
High Plains	Newcastle	2020 Public Nominated Parcel - Trail Creek	1,640	0	Easement or ROW Acquisition	Medium
Wind River Bighorn Basin	Cody	2020 BLM-Identified Parcel - Devils Tooth	0	653	Easement or ROW Acquisition	Low
Wind River Bighorn Basin	Cody	2020 BLM-Identified Parcel - Heart Mountain	0	5,748	Easement or ROW Acquisition	High
Wind River Bighorn Basin	Cody	2020 BLM-Identified Parcel - Little Mountain/Moss Ranch	0	5,666	Easement or ROW Acquisition	High
Wind River Bighorn Basin	Cody	2020 BLM-Identified Parcel - Little Rawhide	885	0	Easement or ROW Acquisition	Low
Wind River Bighorn Basin	Cody	2020 BLM-Identified Parcel - Meeteetse Rim Central	0	2,150	Easement or ROW Acquisition	Low
Wind River Bighorn Basin	Cody	2020 BLM-Identified Parcel - Meeteetse Rim E	0	1,945	Easement or ROW Acquisition	Low
Wind River Bighorn Basin	Cody	2020 BLM-Identified Parcel - Meeteetse Rim N	0	1,429	Easement or ROW Acquisition	Low
Wind River Bighorn Basin	Cody	2020 BLM-Identified Parcel - Meeteetse Rim S	0	670	Easement or ROW Acquisition	Low
Wind River Bighorn Basin	Cody	2020 BLM-Identified Parcel - Meeteetse Rim W	1,391	0	Easement or ROW Acquisition	Low
Wind River Bighorn Basin	Cody	2020 BLM-Identified Parcel - North Fork Trout Creek E	0	1,263	Easement or ROW Acquisition	Low

Attachment – 2020 BLM Dingell Act Priority Access List

District Office	Field Office	Parcel Area Name	# Acres Legally Inaccessible	# Acres Significantly Restricted	Potential Access Remedy	State Priority Ranking
Wind River Bighorn Basin	Cody	2020 BLM-Identified Parcel - North Fork Trout Creek W	0	1,380	Easement or ROW Acquisition	Low
Wind River Bighorn Basin	Cody	2020 BLM-Identified Parcel - Rattlesnake Mountain	0	18,714	Other	High
Wind River Bighorn Basin	Cody	2020 BLM-Identified Parcel - Stonebridge/Breteche Creek	1,670	0	Easement or ROW Acquisition	Low
Wind River Bighorn Basin	Lander	2020 BLM-Identified Parcel - Dickinson Park/Government Slope	0	2,041	Easement or ROW Acquisition	Low
Wind River Bighorn Basin	Lander	2020 BLM-Identified Parcel - Johnny Behind the Rocks	0	4,965	Fee Acquisition	Low
Wind River Bighorn Basin	Lander	2020 BLM-Identified Parcel - Little Red Creek	0	5,173	Easement or ROW Acquisition	Low
Wind River Bighorn Basin	Lander	2020 BLM-Identified Parcel - Sweetwater Canyon WSA	0	9,056	Fee Acquisition	Low
Wind River Bighorn Basin	Worland	2020 BLM-Identified Parcel - Red Canyon	0	8,428	Easement or ROW Acquisition	High
Grand Totals			290,241	306,195		