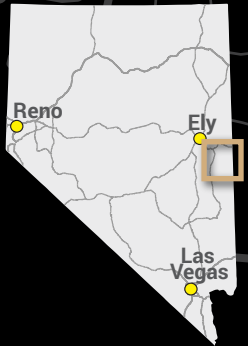
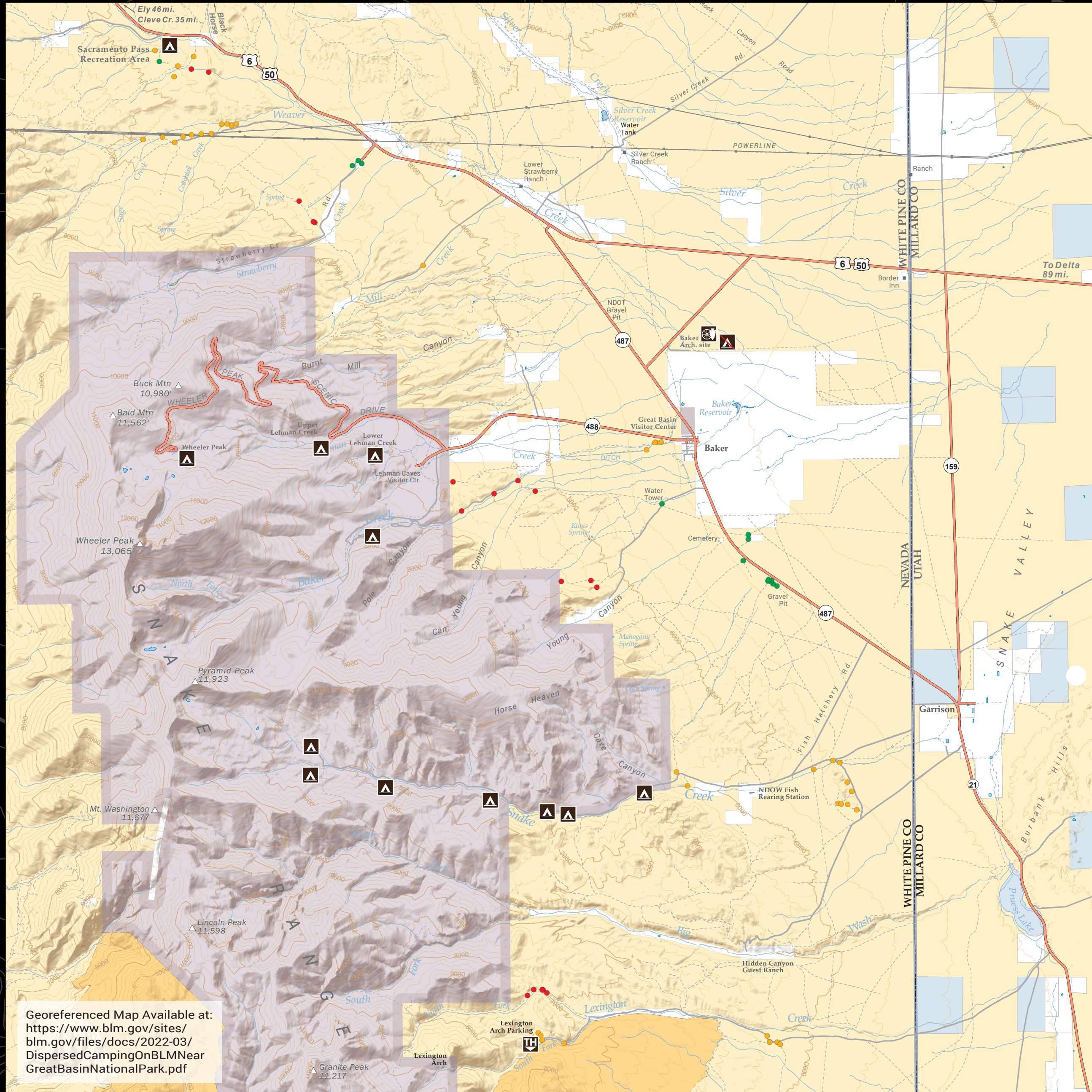




Dispersed Camping on BLM Near Great Basin National Park

Bristlecone Field Office
702 N. Industrial Way
Ely NV, 89301
(775)289-1800

White Pine County



LEGEND

Dispersed Campsites Accessibility

Existing dispersed campsite locations are depicted on the map by the different colored dots. The colors represent accessibility that ranges from easy to difficult.

- **Easy**
Accessible by low clearance two wheel drive.
- **Moderate**
Recommended higher clearance SUV / 4WD.
- **Difficult**
Recommended high clearance SUV / 4WD with backcountry driving skills.

Recreation

- Campground
- Day Use Only
No Camping
- Historic/Cultural Point of Interest
- Trailhead

Roads

- Paved
- Unpaved
- Maintained
- Dirt Road

Land Status

- BLM
- NPS
- State
- Private
- BLM Wilderness



No warranty is made by the Bureau of Land Management as to the accuracy, reliability, or completeness of these data for individual use or aggregate use with other data. Original data were compiled from various sources. This information may not meet National Map Accuracy Standards. This product was developed through digital means and may be updated without notification.

Map produced: 2022

Georeferenced Map Available at:
<https://www.blm.gov/sites/blm.gov/files/docs/2022-03/DispersedCampingOnBLMNearGreatBasinNationalPark.pdf>