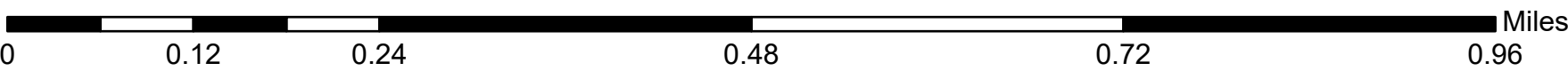
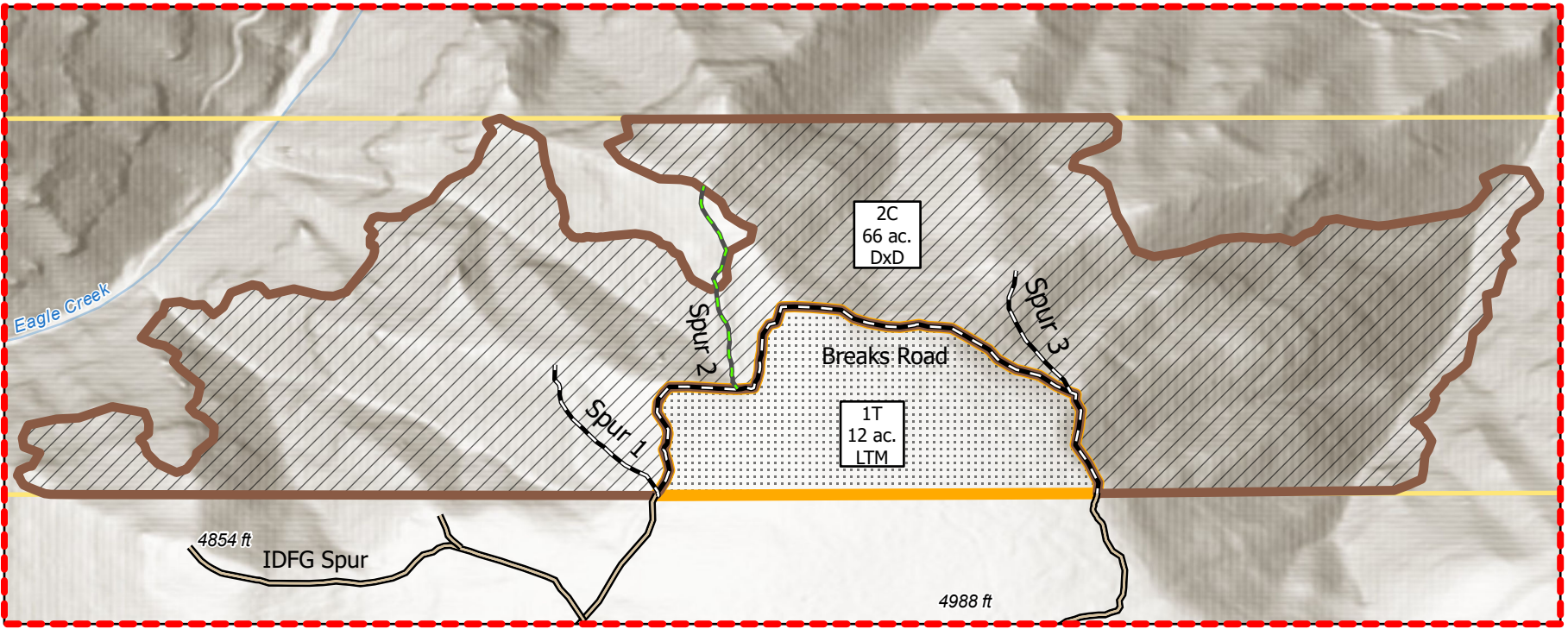
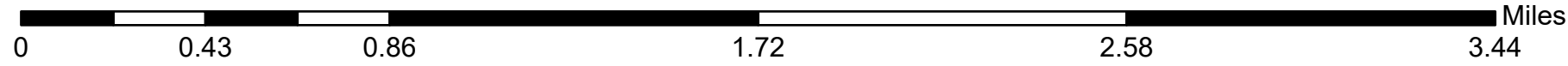
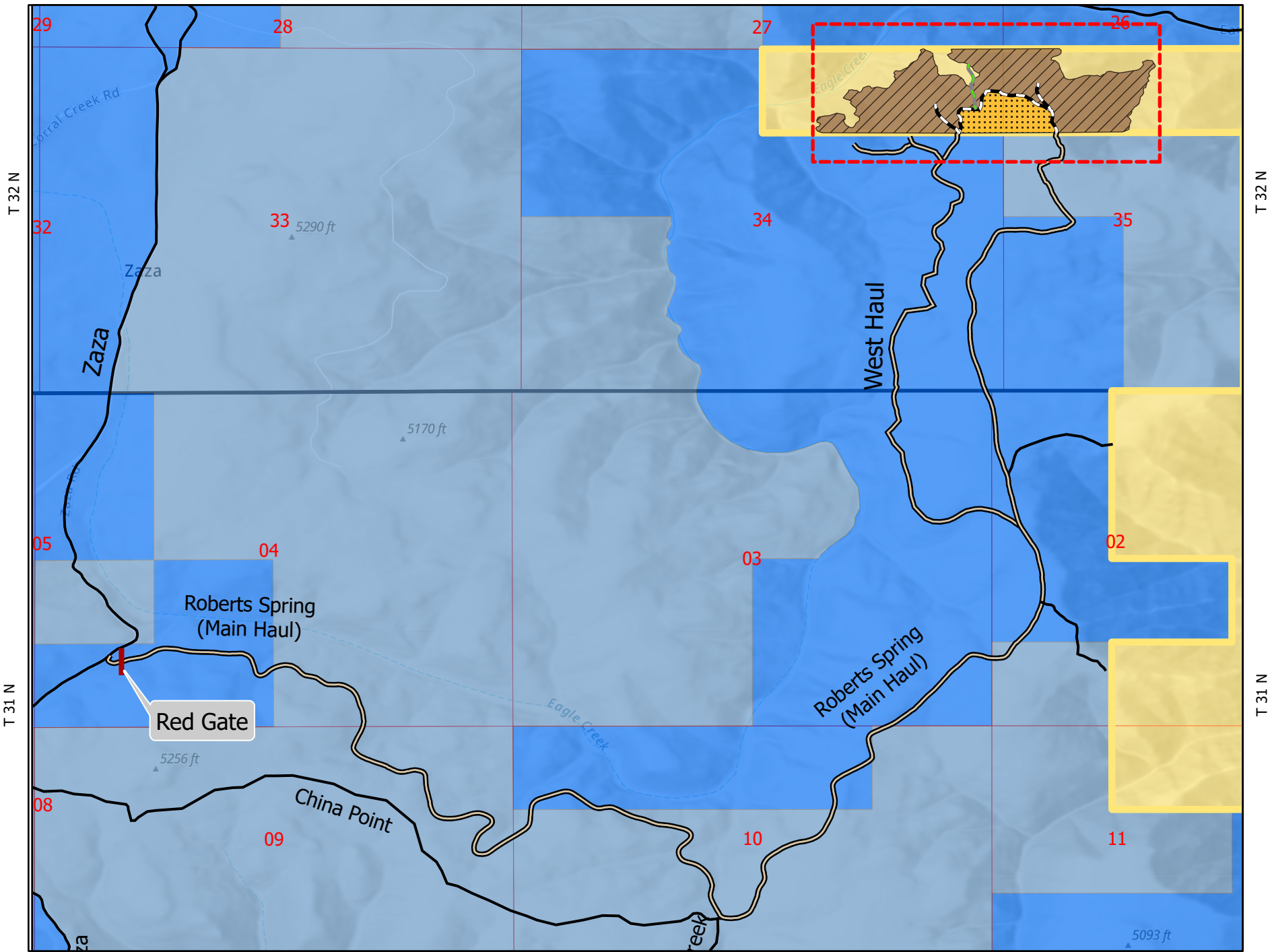


# Eagle Breaks Fire Salvage

IDC02 - TS - 2022.0001

## Exhibit A & C



The surface management status ("land ownership") should be used as a general guide only. Official land records, located at the Bureau of Land Management (BLM) and other offices, should be checked for up-to-date information concerning any specific tract of land.

No warranty is made by the Bureau of Land Management. The accuracy, reliability or completeness of these data for individual use or aggregate use with other data is not guaranteed. The following cannot be made Section 08 Compliant.

Esri Community Maps Contributors, State of Oregon GEO, © OpenStreetMap, Microsoft, Esri Canada, Esri, HERE, Garmin, SafeGraph, INCREMENT P, METI/NASA, USGS, Bureau of Land Management, EPA, NPS, US Census Bureau, USDA, Esri, NASA, NGA, USGS, FEMA, State of Oregon GEO, Esri Canada, Esri, HERE, Garmin, SafeGraph, INCREMENT P, METI/NASA, USGS, Bureau of Land Management, EPA, NPS, US Census Bureau, USDA

### Legend

#### Transportation

- Existing
- New Construction
- Open and Improve
- Reconstruct Swing Trail
- Gate

#### Harvest System

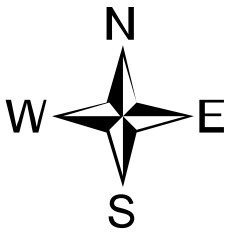
- Cable
- Tractor

#### Prescription

- DxD (See Exhibit G)
- LTM
- Township
- Section

#### Ownership

- BLM
- HSTRCWTR
- IR
- PRIVATE
- STATE
- STATEFG
- USFS



Map Created:  
10/13/21 HD